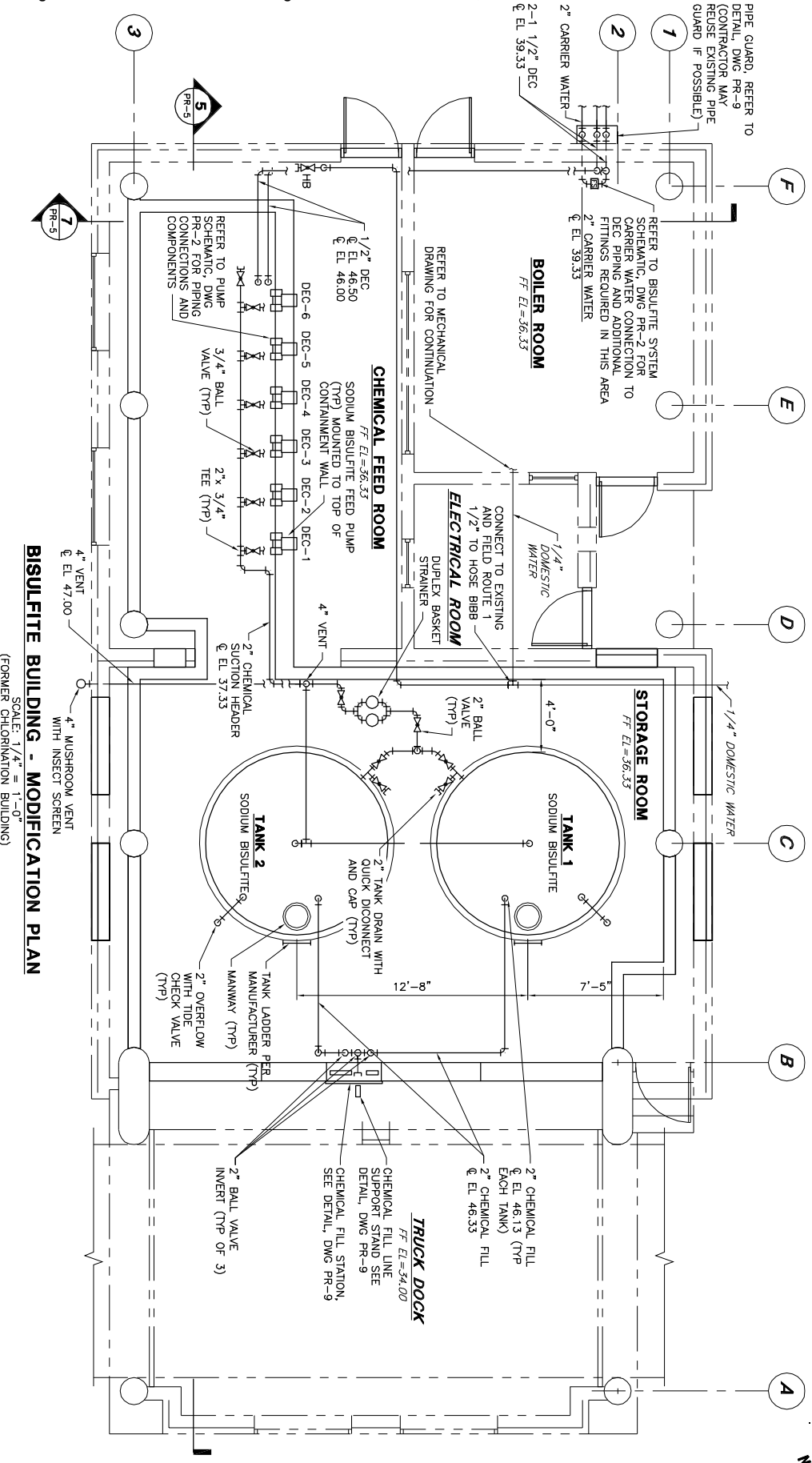


BISULFITE BUILDING - DEMOLITION PLAN
(FORMER CHLORINATION BUILDING)

- DRAWING KEY**
- 1 - Chlorinators
 - 2 - Evaporators
 - 3 - Expansion Chamber
 - 4 - Chlorine Gas Detector & Alarm
 - 5 - Chlorine Scale
 - 6 - Chlorine Cylinder
 - 7 - Material
 - 8 - Monorail Switch
 - 9 - Hoist
 - 10 - One Ton Cylinder Grab
 - 11 - Ejector Vacuum 2" P.C.
 - 12 - Process water

- DEMOLITION NOTES**
- REFER TO DRAWING PR-1 FOR GENERAL DEMOLITION NOTES.
- 1 REMOVE / DEMOLISH CHLORINATORS, (TYP. OF 3) IN THEIR ENTIRETY, INCLUDING BUT NOT LIMITED TO EQUIPMENT PADS, ASSOCIATED PIPING AND ELECTRICAL COMPONENTS.
 - 2 REMOVE / DEMOLISH EVAPORATORS IN THEIR ENTIRETY, INCLUDING BUT NOT LIMITED TO EQUIPMENT PADS AND ELECTRICAL COMPONENTS.
 - 3 REMOVE / DEMOLISH CHLORINE PIPING TO LIMITS SHOWN, INCLUDING BUT NOT LIMITED TO VENTS, VALVES, FITTINGS, PIPE SUPPORTS, CAP ELECTOR PIPES AT FLOOR AT FLOOR.
 - 4 REMOVE / DEMOLISH CHLORINE GAS LEAK DETECTOR/ALARM AND ALL ASSOCIATED APPURTENANCES.
 - 5 REMOVE / DEMOLISH SCALES, (TYP. OF 2) IN THEIR ENTIRETY INCLUDING ELECTRICAL COMPONENTS, SCALE DIAL AND ALL OTHER ASSOCIATED APPURTENANCES.
 - 6 REMOVE / DEMOLISH CYLINDERS AND CRADLE BLOCKS.
 - 7 REMOVE / DEMOLISH MONORAIL, REFER TO STRUCTURAL DRAWINGS FOR ADDITIONAL REQUIREMENTS.



BISULFITE BUILDING - MODIFICATION PLAN
(FORMER CHLORINATION BUILDING)

- MODIFICATION NOTES:**
1. REFER TO DRAWING PR-1 FOR GENERAL NOTES AND ABBREVIATIONS.
 2. NOT ALL PIPE SIZES, VALVES AND FITTINGS ARE SHOWN FOR CLARITY. CHEMICAL FEED SYSTEM IS NOT SHOWN IN ITS ENTIRETY. SHOWN ARE THE GENERAL EQUIPMENT AND TANK LOCATIONS. CONTRACTOR SHALL FIELD LOCATE/ROUTE ALL PIPING EQUIPMENT AND TANK APPURTENANCES AS REQUIRED TO ENSURE A FULLY FUNCTIONAL AND INTEGRATED CHEMICAL FEED SYSTEM. FOR ADDITIONAL INFORMATION, REFER TO BISULFITE SYSTEM SCHEMATIC, DRAWING PR-2.
 3. CHEMICAL PIPING SHALL BE INSTALLED IN SUCH A WAY AS TO ALLOW FOR MAINTENANCE. PROVIDE PIPE PROTECTION TO PROTECT PIPING FROM PHYSICAL DAMAGE. WHERE THE POTENTIAL FOR DAMAGE EXISTING OR AS SHOWN ON THE DRAWINGS, PROTECTIONS SYSTEM SHALL BE CORROSION RESISTANT.
 4. THE DISCHARGE OF EACH PUMP SHALL BE PROVIDED WITH A FRP UNISTRUT PVC BOARD SHEET SUPPORT SYSTEM TO FACILITATE SUPPORT AND/OR MOUNTING OF THE PRESSURE RELIEF VALVES, FLOW METERS, BALL VALVES, QUICK DISCONNECT CAMLOCK AND CAP, 3-FOOT SECTION OF LOOPED PVC DISCHARGE TUBING, AND OTHER APPURTENANCES AS INDICATED ON THE CHEMICAL SYSTEM AND TUBING TYPICAL DRAWING PR-2. FOUNDATION SHALL BE REVIEWED WITH THE ENGINEER IN THE FIELD, PRIOR TO BEGINNING INSTALLATION.
 5. ALL VALVES ASSOCIATED WITH THE CHEMICAL SYSTEM SHALL BE ACCESSIBLE FROM THE FLOOR WITHOUT NEED FOR STEP OR A LADDER TO OPERATE.
 6. ALL HARD PIPING AND FITTINGS SHALL BE JOINED BY SOLVENT WELD ONLY, NO THREADS OR TRUE UNIONS WILL BE ALLOWED.