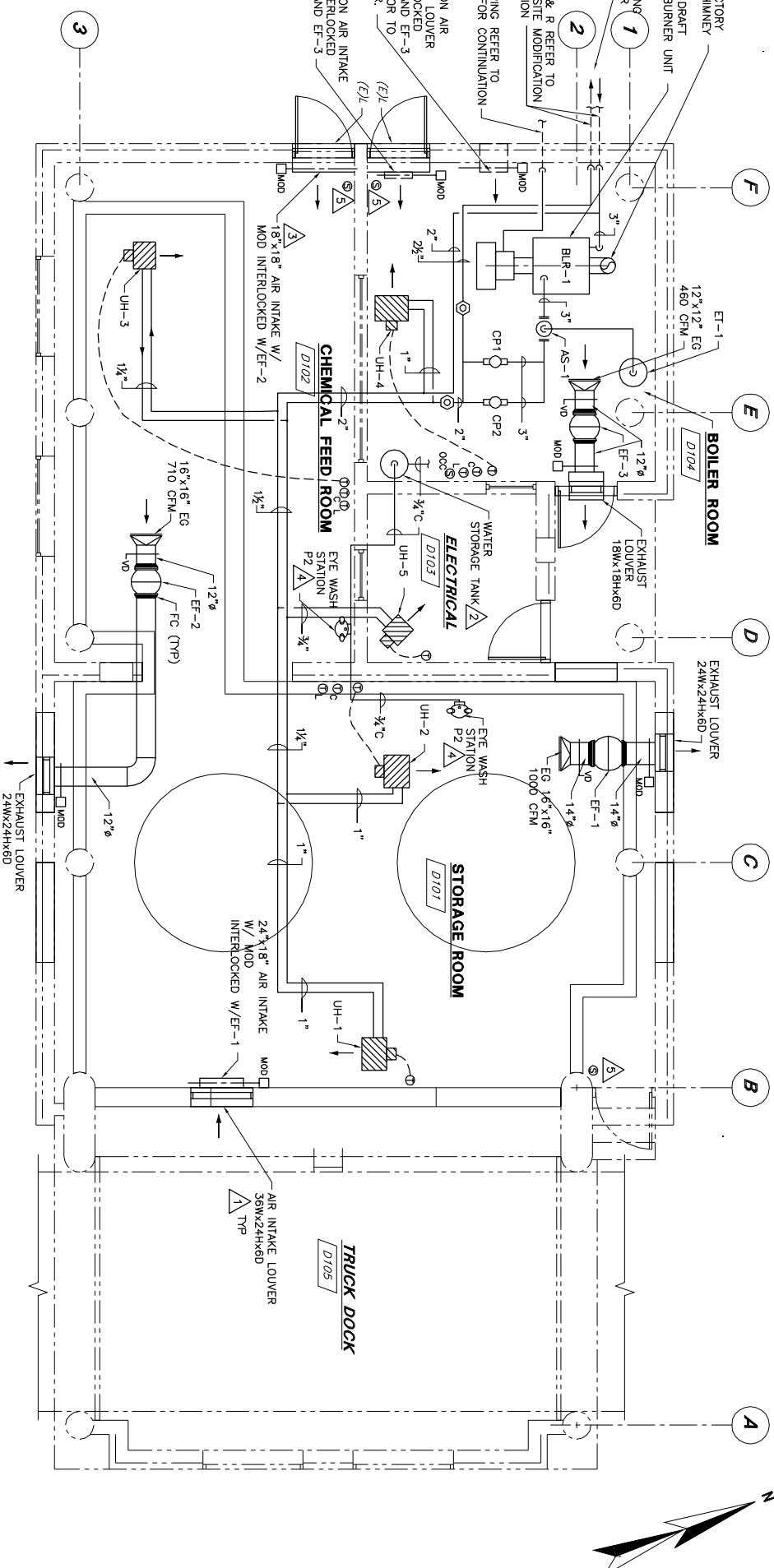


BISULFITE BUILDING - DEMOLITION PLAN
 (FORMER CHLORINATION BUILDING)
 SCALE: 1/4" = 1'-0"



BISULFITE BUILDING - MODIFICATION PLAN
 (FORMER CHLORINATION BUILDING)
 SCALE: 1/4" = 1'-0"

DEMOLITION NOTES:

- 1 REMOVE MOTOR OPERATED DAMPER, LOUVER TO REMAIN.
- 2 REMOVE THE ELECTRIC FIRED LAMPALC HEATING SYSTEM, INCLUDING ROOMS PIPES, EXPANSION TANKS, SPARES PIPING AND CONDUIT, DOMESTIC WATER SUPPLY, EXPANSION TANK AND THERMOSTAT.
- 3 REMOVE AIR EXHAUST SYSTEMS INCLUDING DUCTWORK, LOUVER, IN-LINE FANS, HANGERS, PUMP, CONTROLS, AND POWER SUPPLY WIRING AND CONDUIT.
- 4 REMOVE LOW TEMPERATURE ALARM THERMOSTAT.
- 5 REMOVE FLOOR CLEANOUT AND CAP PIPE COVER WITH A MINIMUM OF 2 INCHES OF NON-SHRINK GROUT FLUSH WITH FLOOR.
- 6 REMOVE FLOOR DRAIN AND CAP PIPE COVER WITH A MINIMUM OF 2 INCHES OF NON-SHRINK GROUT FLUSH WITH FLOOR.
- 7 REMOVE VENT STARTING FROM BELOW THE FLOOR THRU THE CONCRETE ROOF, CAP PIPE AND REPAIR ROOF COVER CAP WITH A MINIMUM OF 2 INCHES OF NON-SHRINK GROUT FLUSH WITH FLOOR.

MODIFICATION NOTES:

- 1 LOCATE ALL LOUVER AS HIGH AS POSSIBLE.
- 2 PROVIDE A 45 GALLON INSULATED STAINLESS STEEL WATER STORAGE TANK FOR THE EMERGENCY EYE WASH STATIONS. LOCATE ON THE FLOOR, 150PSI ASME CERTIFIED, THE INTO EXISTING POTABLE WATER LINE, PROVIDE A VACUUM BREAKER IN THE EXISTING INLET LINE.
- 3 PROVIDE A SHEET METAL TRANSITION FROM THE EXISTING LOUVER TO THE MOTOR OPERATED DAMPER.
- 4 EMERGENCY EYEWASH STATION, HAWS MODEL 7460B, PROVIDE AN IN-LINE FLOW SWITCH, THE FLOW SWITCH SHALL BE TIED INTO THE PLC SYSTEM.
- 5 FIELD VERIFY THE LOCATION OF THE LIGHT SWITCHES & CIRCUITS, INTERLOCK THE CIRCUITS WITH FANS AS INDICATED IN THE SEQUENCE OF OPERATIONS ON DRAWING H-3.

GENERAL NOTES:

1. REFER TO DRAWING H-3 FOR DETAIL SHOWING BOILER/HEATING SYSTEM PIPING.
2. A GENERAL ROUTING OF THE PIPING IS SHOWN FIELD LOCATE.
3. INSTALL EQUIPMENT IN ACCORDANCE WITH MANUFACTURERS RECOMMENDATIONS.
4. 1 HOUR FIRE RATED CONSTRUCTION FOR BOILER ROOM.

NO	REVISIONS	APP'D	DATE	PROGRESS PRINTS
1				ISSUED FOR REVIEW: 12-15-04
2				ISSUED FOR BIDDING: 2-18-05
3				SHEET LOCATION: FF 58
4				LAST WORKED ON:
5				FILENAME:

DRAWN BY RAO/CJB
 CHECKED BY GPO/PFB
 DATE 2-18-05
 APPROVED BY GPO/PFB
 DATE 2-18-05
 BOOK NO. -
 PROJECT NO. 10301C
 SCALE AS NOTED



PORTLAND WATER DISTRICT
 PORTLAND, MAINE
 EAST END WWTF DISINFECTION AND
 DECHLORINATION SYSTEMS UPGRADE
 BISULFITE BUILDING
 PLANS AND SCHEDULES