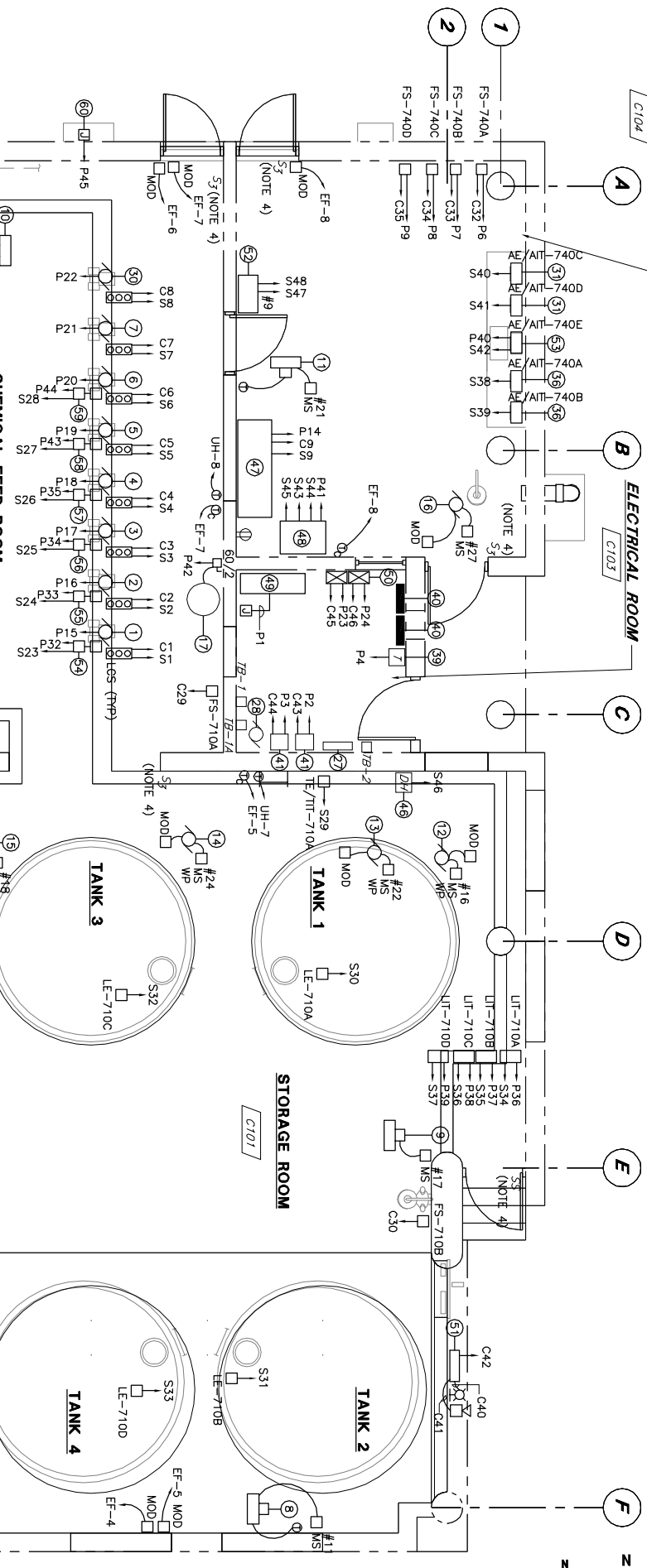


**HYPOCHLORITE BUILDING
DEMOLITION PLAN**
(FORMER DECHLORINATION BUILDING)
SCALE: 1/4" = 1'-0"

EQUIPMENT LEGEND

- ① SODIUM HYPOCHLORITE FEED PUMP HYP-1
- ② SODIUM HYPOCHLORITE FEED PUMP HYP-2
- ③ SODIUM HYPOCHLORITE FEED PUMP HYP-3
- ④ SODIUM HYPOCHLORITE FEED PUMP HYP-4
- ⑤ SODIUM HYPOCHLORITE FEED PUMP HYP-5
- ⑥ SODIUM HYPOCHLORITE FEED PUMP HYP-6
- ⑦ SODIUM HYPOCHLORITE FEED PUMP RAS-HYP-1
- ⑧ UNIT HEATER UH-6
- ⑨ UNIT HEATER UH-7
- ⑩ UNIT HEATER UH-8
- ⑪ UNIT HEATER UH-9
- ⑫ EXHAUST FAN EF-4 (ON ROOF)
- ⑬ EXHAUST FAN EF-5 (ON ROOF) (NOTE 4)
- ⑭ EXHAUST FAN EF-7 (ON ROOF) (NOTE 4)
- ⑮ EXHAUST FAN EF-8 (ON ROOF)
- ⑯ EXHAUST FAN EF-8 (NOTE 4)
- ⑰ ELECTRIC WATER HEATER
- ⑱ ELECTRIC UNIT HEATER EUH-4 TO BE REMOVED
- ⑲ ELECTRIC UNIT HEATER EUH-3 TO BE REMOVED
- ⑲ ELECTRIC UNIT HEATER EUH-2 TO BE REMOVED
- ⑲ ELECTRIC UNIT HEATER EUH-1 TO BE REMOVED
- ⑲ LOW TEMPERATURE ALARM (TYP)
- ⑲ ROOF EXHAUST FAN REF-4 TO BE REMOVED
- ⑲ ROOF EXHAUST FAN REF-3 TO BE REMOVED
- ⑲ ROOF EXHAUST FAN REF-2 TO BE REMOVED
- ⑲ ROOF EXHAUST FAN REF-1 TO BE REMOVED
- ⑲ ELECTRIC WALL HEATER 1.5KW EWH-1 TO REMAIN
- ⑲ ELECTRICAL ROOM EXHAUST FAN EF-1 TO REMAIN
- ⑲ SCALE TO BE REMOVED
- ⑳ SODIUM HYPOCHLORITE FEED PUMP RAS-HYP-2
- ㉑ RESIDUAL ANALYZER (TYP 2) TO REMAIN
- ㉒ SULFONATOR (TYP 2) TO BE REMOVED
- ㉓ SULFONATOR (TYP 2) TO BE REMOVED
- ㉔ SULFUR DIOXIDE LEAK DETECTOR (TYP 2) TO BE REMOVED
- ㉕ MONORAIL POWER SUPPLY DISCONNECT SWITCH TO BE REMOVED
- ㉖ BYPASS RESIDUAL ANALYZER (TYP 2) TO REMAIN
- ㉗ FAN SWITCH (TYP) TO BE REMOVED
- ㉘ MOTOR CONTROL CENTER MCC-DGB TO BE REMOVED
- ㉙ JOKIA TRANSFORMER TO REMAIN
- ㉚ PANELBOARD LCD (2 SECTIONS) TO REMAIN
- ㉛ WATER CONTROLLER (TYP 2) TO REMAIN
- ㉜ OVERHEAD DOOR OPERATOR AND DISCONNECT SWITCH (TYP 2) TO BE REMOVED
- ㉝ TRUCK SCALE CONTROL PANEL
- ㉞ SO2 GAS DETECTION PANEL TO BE REMOVED
- ㉞ CONTROL PANEL (TYP) TO BE REMOVED
- ㉞ DATA HIGHWAY JUNCTION BOX TO REMAIN
- ㉞ VFD CONTROL PANEL
- ㉞ CHLORINATION CONTROL PANEL (CCP)
- ㉞ MAIN DISTRIBUTION PANEL MDP-HB
- ㉞ MOTOR STARTER CARRIER WATER PUMP (TYP 2)
- ㉞ HYPOCHLORITE FILL PANEL (HFP), ALARM HORN AND STROBE LIGHT
- ㉞ COMMUNICATION PANEL (COM-1)
- ㉞ HIGH RANGE PRIMARY INFLUENT CHLORINE RESIDUAL ANALYZER
- ㉞ FE/FT-719F
- ㉞ HEAT TRACE POWER SUPPLY FOR HYPOCHLORITE FEED LINES



**HYPOCHLORITE BUILDING
MODIFICATION PLAN**
(FORMER DECHLORINATION BUILDING)

NOTES:

1. FOR LEGEND AND GENERAL NOTES, REFER TO DRAWING E-1.
2. FOR GENERAL DEMOLITION NOTES, REFER TO DRAWING E-5.
3. CIRCUIT NUMBERS SHOWN ON THIS DRAWING REFER TO EXISTING PANELBOARD LCD. FOR PANELBOARD SCHEDULE, REFER TO DRAWING E-6.
4. EXISTING LIGHT SWITCHES SHALL BE INTERLOCKED WITH NEW INTERMITTENT VENTILATION EXHAUST FANS AS NOTED IN SEQUENCE OF OPERATION ON DRAWING H-3, AND AS SHOWN ON TYPICAL SCHEMATIC DIAGRAM FOR THESE FANS. PROVIDE RELAY WITH CORRECT COIL VOLTAGE FOR EXISTING LIGHT CIRCUIT. INSTALLED IN NEMA 4X JUNCTION BOX. PROVIDE ALL NECESSARY CONDUIT AND WIRING TO INTERLOCK LIGHT SWITCHES WITH FANS AS NOTED. RELAYS SHALL HAVE 30 AMP CONTACT RATING.

NO	REVISIONS	APP'D	DATE	PROGRESS PRINTS
1				ISSUED FOR REVIEW: 12-15-04
2				ISSUED FOR BIDDING: 2-18-05
3				WALT LOCATION: PF 58
4				LAST WORKED ON:
5				FILENAME:

DRAWN BY SJM
CHECKED BY DWL/PFB
DATE 2-18-05
APPROVED BY DWL/PFB
DATE 2-18-05
BOOK NO. -
PROJECT NO. 10301C
SCALE AS NOTED



PORTLAND WATER DISTRICT
PORTLAND, MAINE
EAST END WWTF DISINFECTION AND
DECHLORINATION SYSTEMS UPGRADE
NEW HYPOCHLORITE BUILDING
DEMOLITION AND MODIFICATION PLANS

DWG E-4
28 OF 33