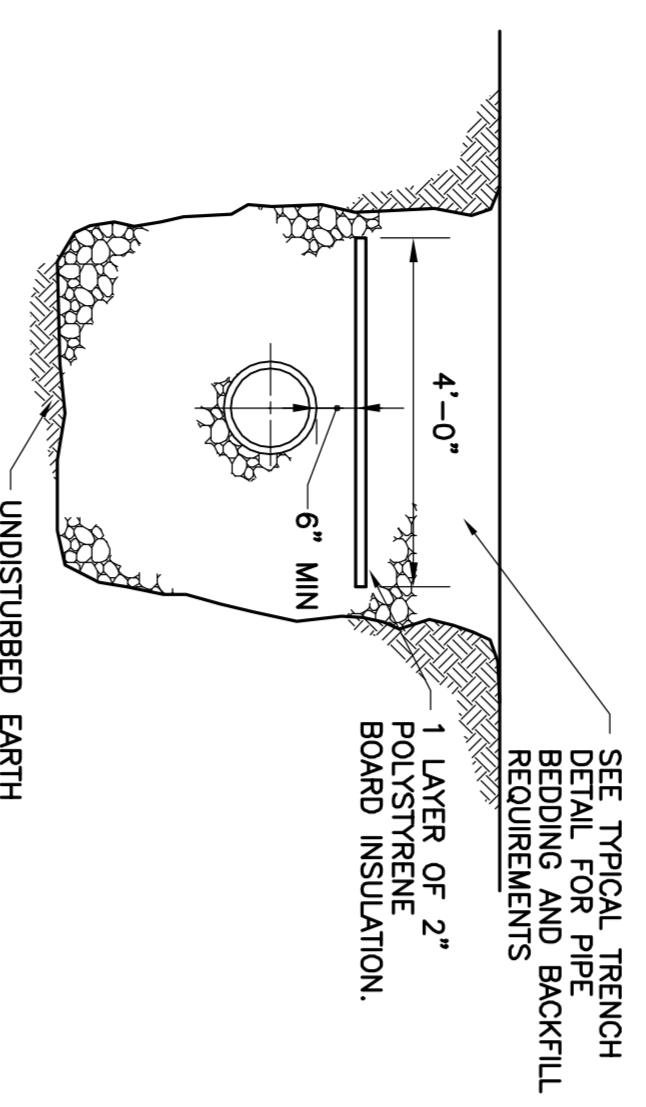
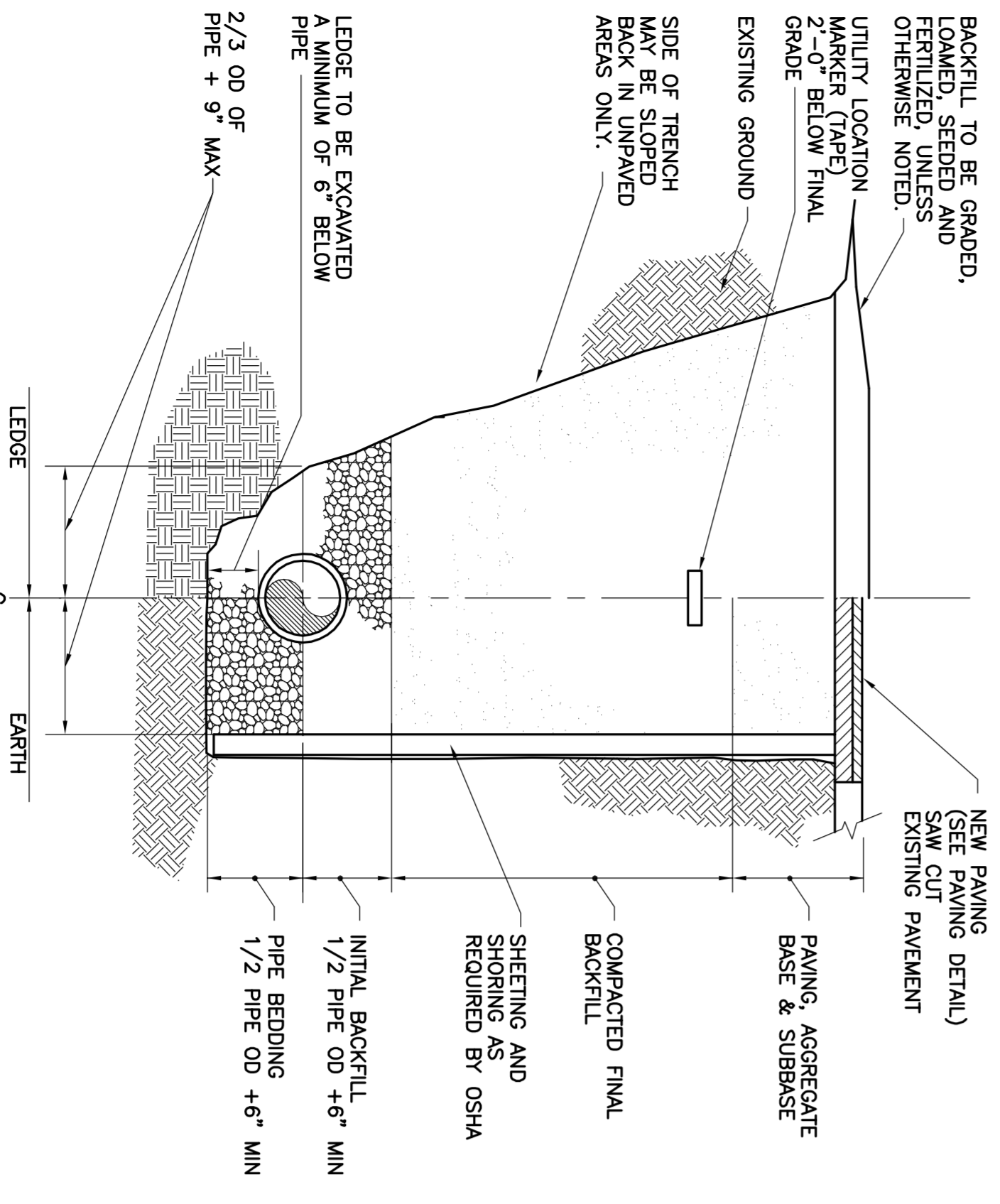


PIPE CROSSING DETAIL
NTS

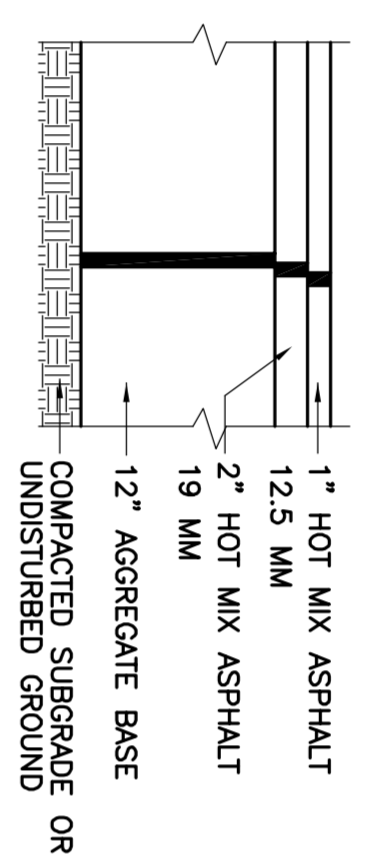


TRENCH PIPE INSULATION DETAIL
NTS

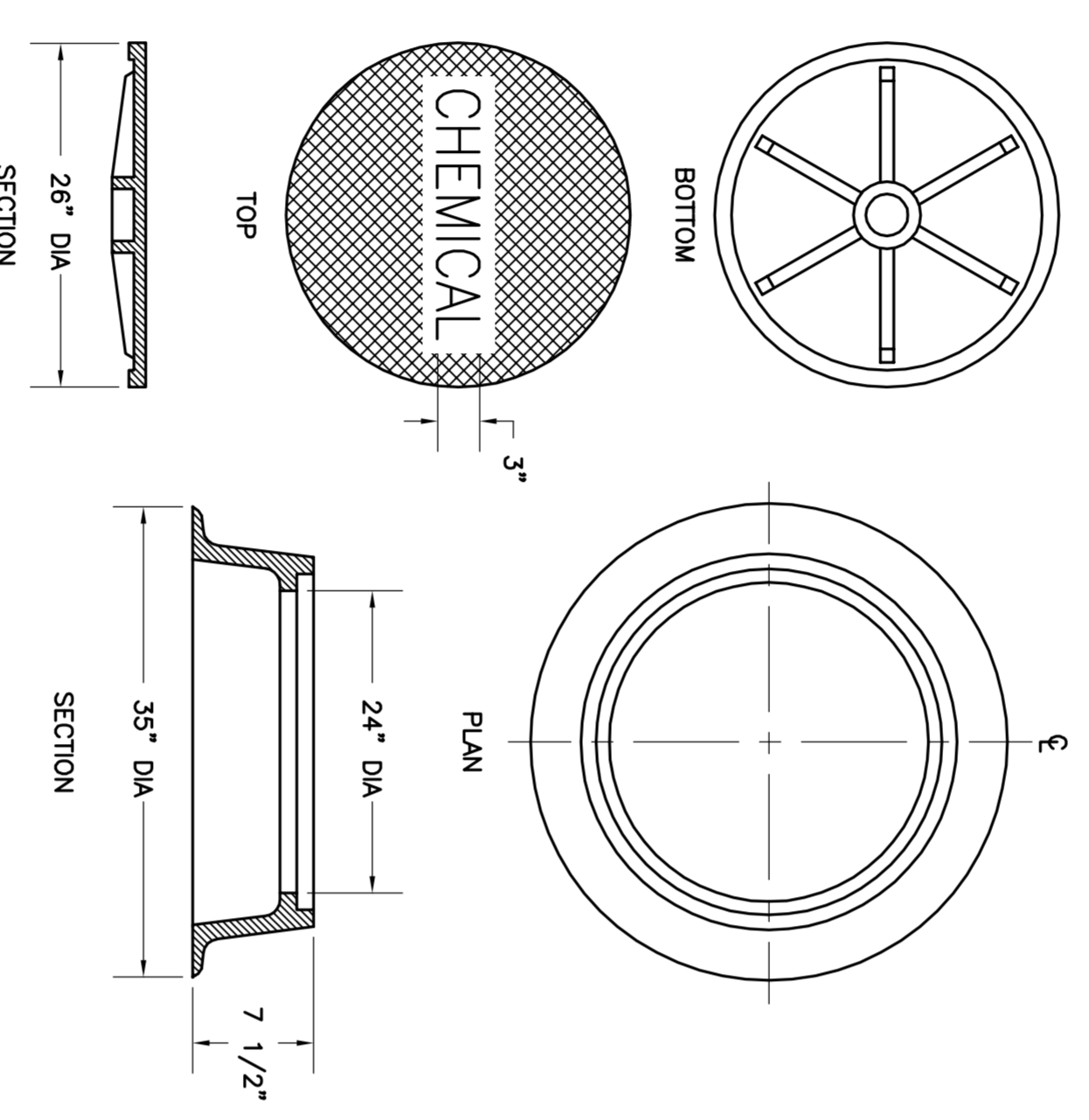


PIPE TRENCH DETAIL
NTS

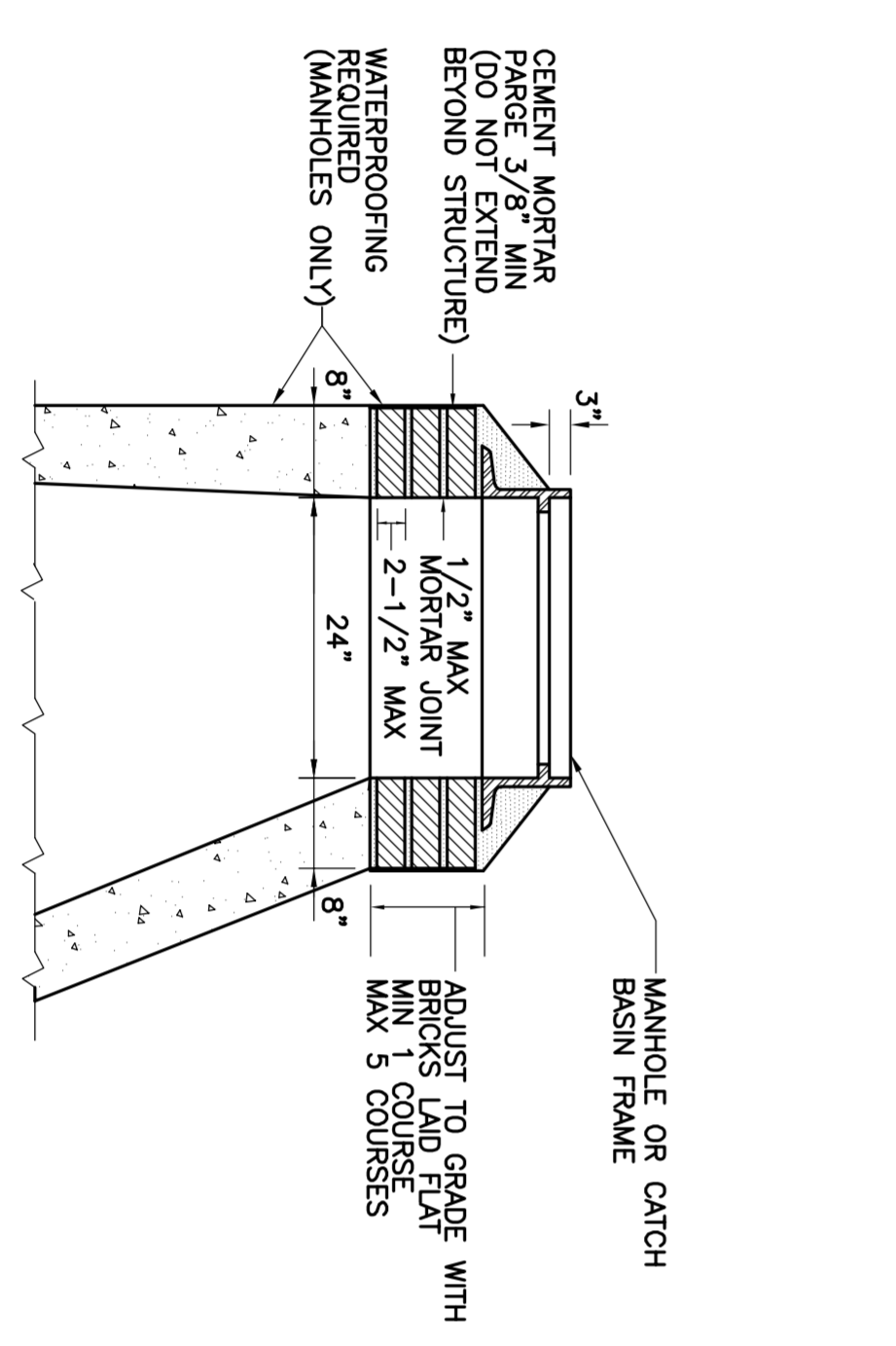
- NOTES:
1. ALL EXCAVATION MUST MEET OSHA STANDARDS
 2. INSTALL 3 FOOT LONG IMPERVIOUS MATERIAL DAM IN BEDDING/INITIAL BACKFILL TO PREVENT FLOW OF BEDDING/INITIAL BACKFILL
 3. SEE SPECIFICATIONS FOR BEDDING AND BACKFILL REQUIREMENTS.



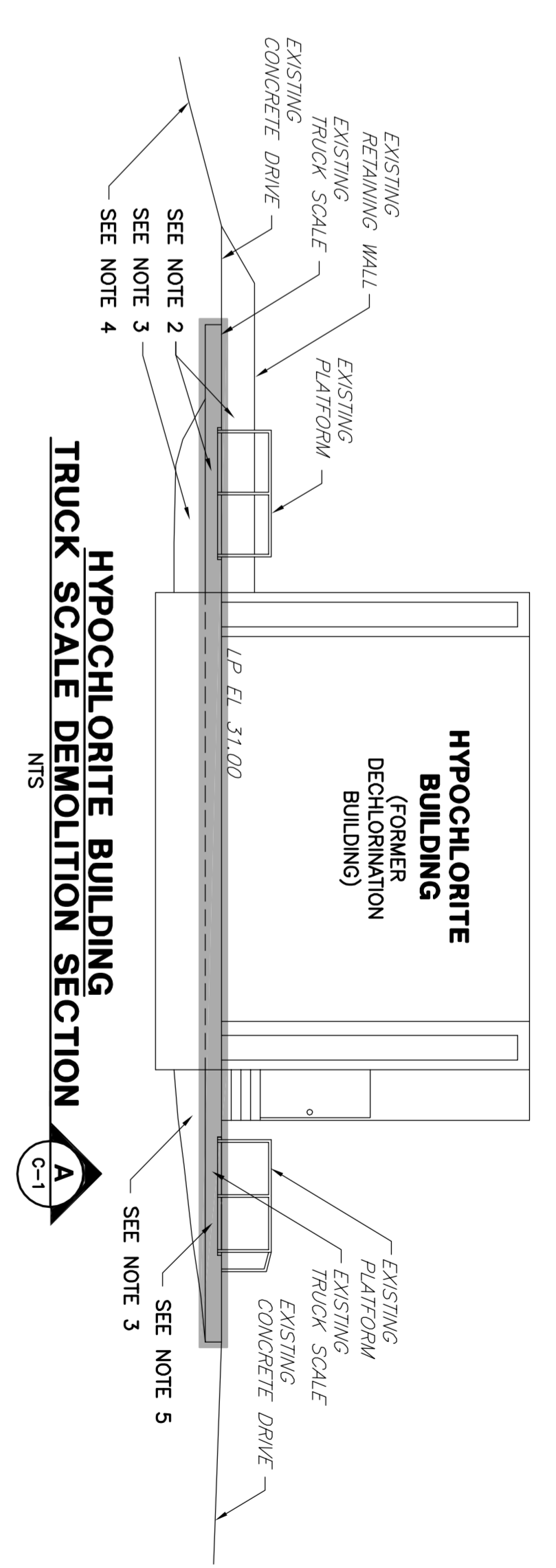
DRIVEWAY PAVEMENT
NTS



STANDARD MANHOLE COVER AND FRAME
NTS

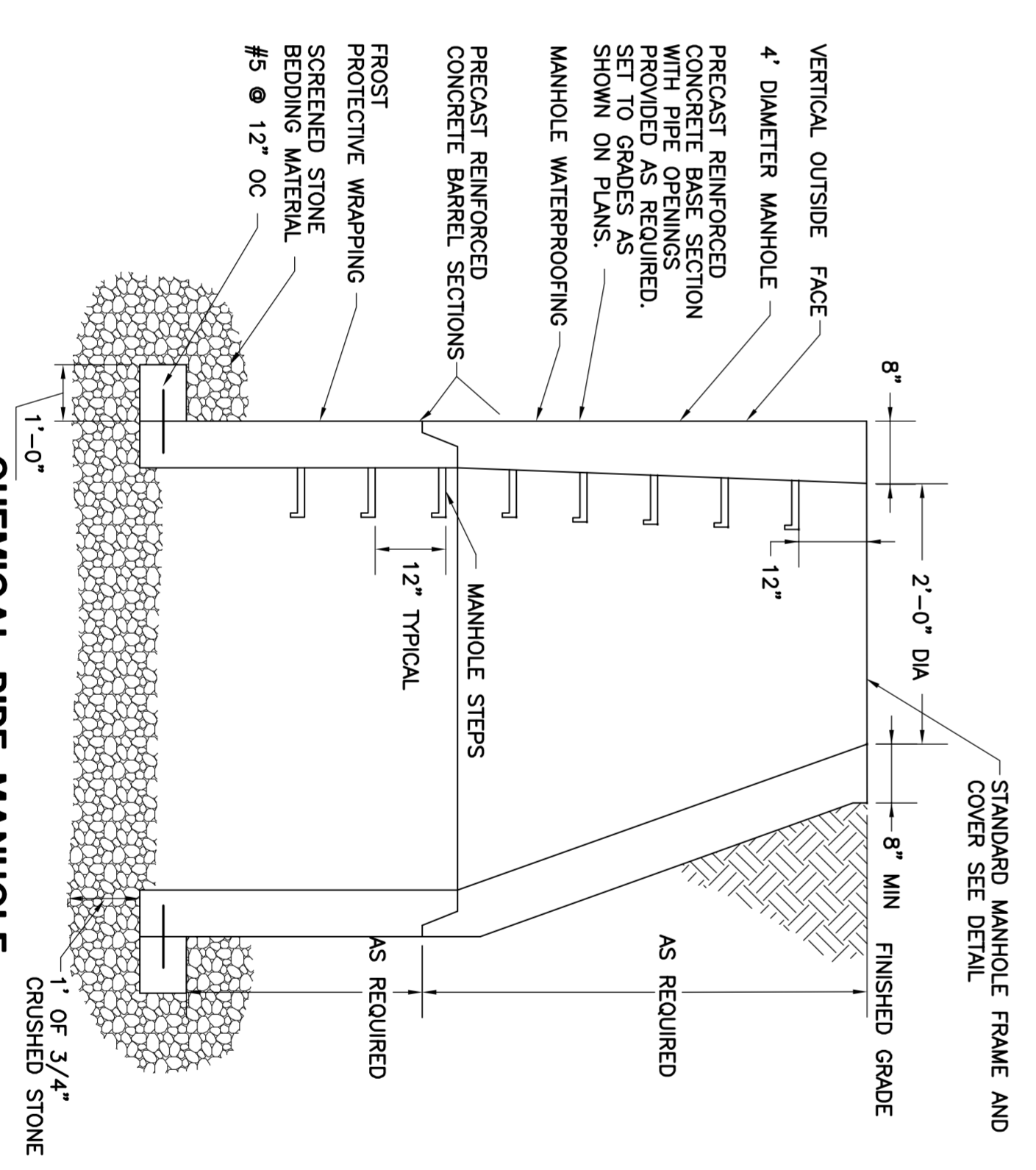


MANHOLE FRAME INSTALLATION
NTS

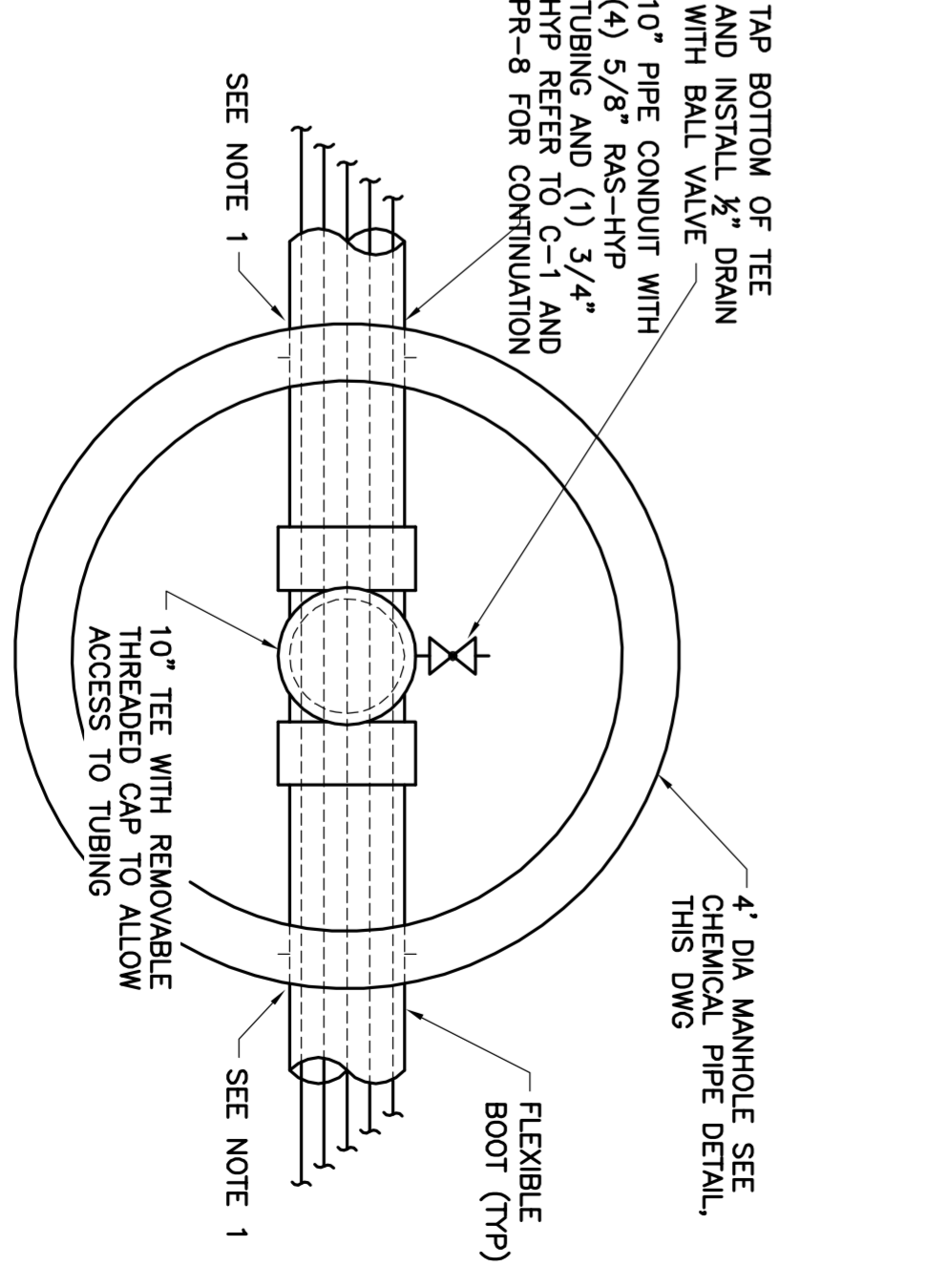


TRUCK SCALE DEMOLITION SECTION
NTS

- MODIFICATION NOTES**
1. CONTRACTOR SHALL REFER TO GENERAL CIVIL NOTES FOR ADDITIONAL REQUIREMENTS.
 2. EXISTING TRUCK SCALE AND APPURTENANCES SHALL BE REMOVED IN ITS ENTIRETY, INCLUDING BUT NOT LIMITED TO PLATFORMS, GRATING, RAILINGS, ELECTRICAL CONDUIT, WIRE AND SYSTEM CONTROL PANEL.
 3. EXISTING GROUND BELOW SCALE SHALL BE FILLED WITH SELECT FILL TO MATCH EXISTING GRADES AND LOAM AND SEEDED. ALLOW FOR POSITIVE DRAINAGE AWAY FROM THE BUILDING.
 4. EXISTING CONCRETE DRIVEWAY SHALL BE REMOVED AND REPLACED WITH TOPSOIL AND SEED TO MATCH EXISTING GRADES AND ALLOW FOR POSITIVE DRAINAGE.
 5. AFTER REMOVAL OF TRUCK SCALE, AREA SHALL BE FILLED WITH SELECT FILL, GRADED AND PAVED TO MATCH EXISTING DRIVE. PROVIDE 4 CONCRETE WALK AS NEEDED TO MATCH EXISTING STEPS. SEE PAVEMENT DETAIL THIS DRAWING.



CHEMICAL PIPE MANHOLE GENERAL SECTION
NTS



CHEMICAL PIPE MANHOLE NO. 1 AND NO. 2
NTS

- NOTES:
1. INVERT ELEVATION TO BE A MINIMUM OF 5' BELOW GRADE.

<p>PORTLAND WATER DISTRICT PORTLAND, MAINE EAST END WWTF DISINFECTION AND DECHLORINATION SYSTEMS UPGRADE</p> <p>MISCELLANEOUS DETAILS</p>	<p>Offices throughout New England www.wright-pierce.com</p>	<p>DRAWN BY SAL</p> <p>CHECKED BY DWS/PFB</p> <p>DATE 2-18-05</p> <p>APPROVED BY PFB</p> <p>DATE 2-18-05</p> <p>BOOK NO. -</p> <p>PROJECT NO. 10301C</p> <p>SCALE AS NOTED</p>	<p>NO</p> <p>REVISIONS</p> <p>APP'D</p> <p>DATE</p> <p>PROGRESS PRINTS</p> <p>ISSUED FOR REVIEW: 12-15-04</p> <p>ISSUED FOR BIDDING: 2-18-05</p> <p>VAULT LOCATION: FT 56</p> <p>LAST WORKED ON:</p> <p>FILENAME:</p>
		<p>DWG C-3</p> <p>3 OF 33</p>	<p>SCALE: 3/4" = 1'-0"</p>