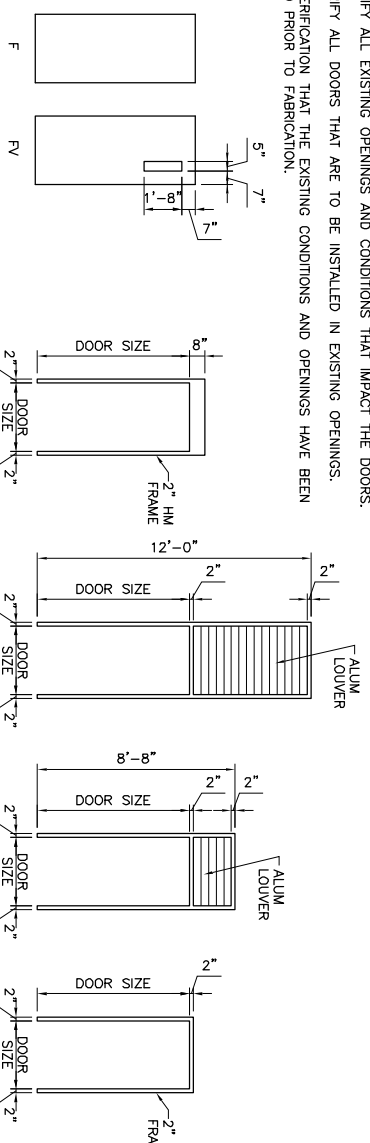


DOOR SCHEDULE

NO.	W.	HT.	THK.	TYPE	MATL	DOORS		FRAMES			HDWE SET	REMARKS					
						GLASS	LOUVER	INS.	LABEL	TYPE			MATL	HEAD	JAMB	SILL	
CD2	3'-0"	6'-8"	1 3/4"	F	HM	-	-	-	1, 2	10	20	-	-	-	1		
CD3	3'-0"	6'-8"	1 3/4"	F	HM	-	-	-	2	FRP	1, 2	10	20	-	-	1	
CD4	3'-0"	6'-8"	1 3/4"	F	HM	-	-	-	2	FRP	1, 2	10	20	-	-	1	
CD5	3'-0"	6'-8"	1 3/4"	F	HM	-	-	-	2	FRP	1, 2	10	20	-	-	1	
CD7	3'-0"	6'-8"	1 3/4"	F	HM	-	-	-	2	FRP	1, 2	10	20	-	-	1	
CD8	3'-0"	7'-2"	1 3/4"	F	HM	-	-	-	2	FRP	1, 2	10	20	-	-	1	
DD2	3'-0"	6'-8"	1 3/4"	F	HM	-	-	-	3	FRP	1, 2	11	20	-	-	1	
DD3	3'-0"	6'-8"	1 3/4"	F	HM	-	-	-	3	FRP	1, 2	11	20	-	-	1	
DD4	3'-0"	6'-8"	1 3/4"	F	HM	-	-	-	1	FRP	4	11	20	-	-	3	
DD5	3'-0"	6'-8"	1 3/4"	F	HM	-	-	-	1	FRP	4	11	20	-	-	3	
DD6	3'-0"	6'-8"	1 3/4"	F	HM	-	-	-	1	FRP	4	11	20	-	-	3	
DD7	3'-0"	6'-8"	1 3/4"	F	HM	-	-	-	1	FRP	4	11	20	-	-	3	

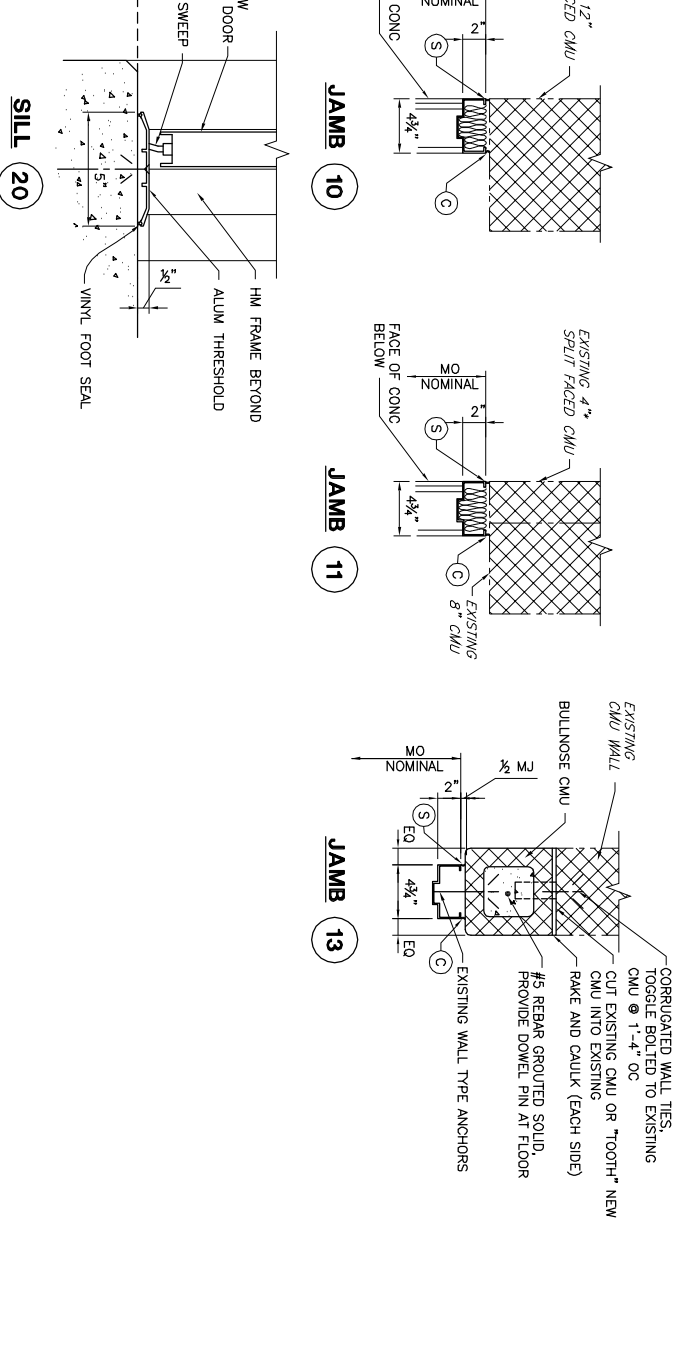
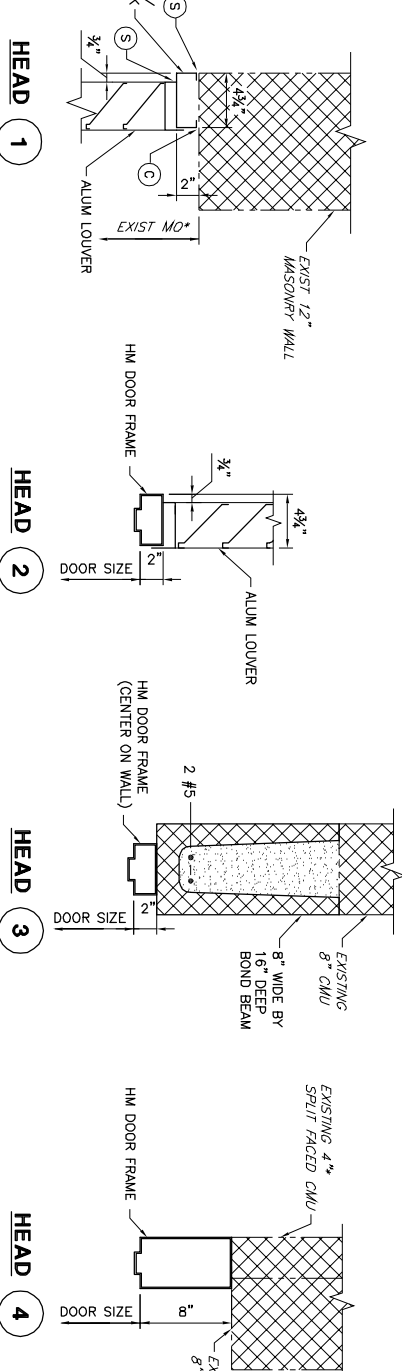
NOTES:

1. FIELD VERIFY ALL EXISTING OPENINGS AND CONDITIONS THAT IMPACT THE DOORS.
2. FIELD VERIFY ALL DOORS THAT ARE TO BE INSTALLED IN EXISTING OPENINGS.
3. SUBMIT VERIFICATION THAT THE EXISTING CONDITIONS AND OPENINGS HAVE BEEN FIELD VERIFIED PRIOR TO FABRICATION.



DOOR TYPES

FRAME TYPES

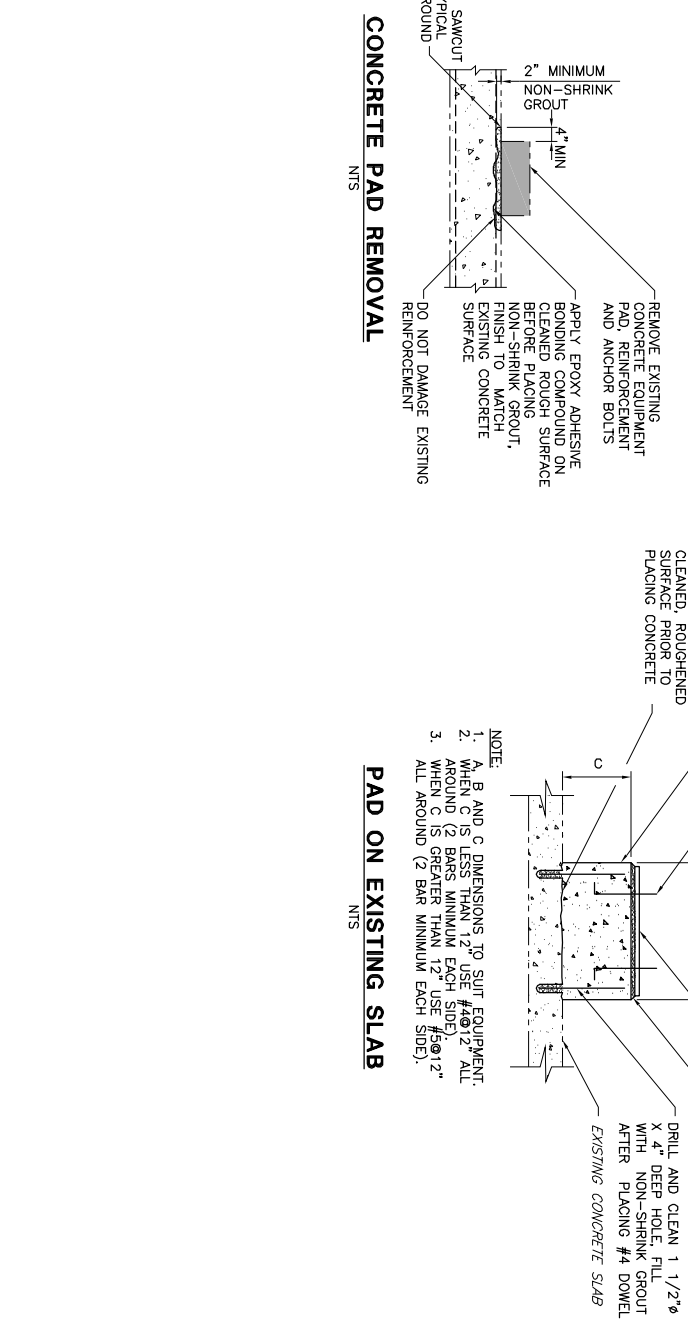
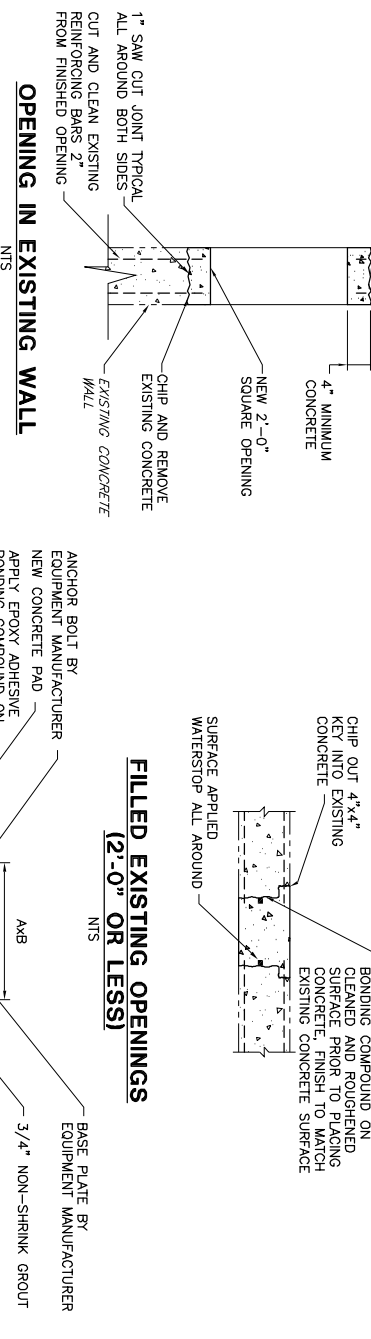
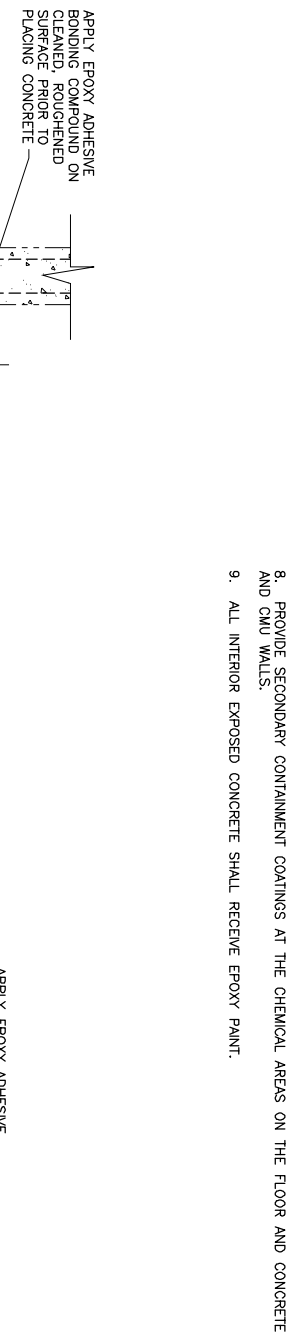


ROOM FINISH SCHEDULE

RM NO	ROOM NAMES	FLOOR BASE FIN. MATL.	WALLS				CEILING		REMARKS
			NORTH	SOUTH	EAST	WEST	MATL.	FIN.	
C101	STORAGE ROOM	CHG CONC	EP	EP	EP	EP	CONC	-	▲ SEE NOTE 8
C102	CHEMICAL FED ROOM	CHG CONC	EP	EP	EP	EP	CONC	-	▲ SEE NOTE 8
C103	ELECTRICAL	CHG CONC	EP	EP	EP	EP	CONC	-	▲ SEE NOTE 8
C104	CHLORINE/ANALYSIS ROOM	CHG CONC	EP	EP	EP	EP	CONC	-	▲ SEE NOTE 8
D101	STORAGE ROOM	CHG CONC	EP	EP	EP	EP	CONC	-	▲ SEE NOTE 8
D102	CHEMICAL FED ROOM	CHG CONC	EP	EP	EP	EP	CONC	-	▲ SEE NOTE 8
D103	ELECTRICAL	CHG CONC	EP	EP	EP	EP	CONC	-	▲ SEE NOTE 8
D104	BOILER ROOM	CHG CONC	EP	EP	EP	EP	CONC	-	▲ SEE NOTE 8
D105	TRUCK DOCK	CHG CONC	EP	EP	EP	EP	CONC	-	▲ SEE NOTE 8

ROOM FINISH NOTES:

1. GROUT, PATCH, LEVEL, REPAIR AND SEAL THE CRACKS AND OPEN JOINTS AND CORRECT ALL EXISTING SURFACES PRIOR TO THE APPLICATION OF THE NEW FINISHES.
2. REMOVE AND REPLACE ALL EXISTING SEALANTS AND CAULKING AT AREAS INDICATED TO BE FINISHED.
3. REMOVE AND REINSTALL ALL ITEMS MOUNTED TO THE WALLS AND SURFACES TO BE REFINISHED.
4. CLEAN AND REMOVE ALL LOOSE PAINT, RUST, DIRT AND OILS FROM THE EXISTING SURFACES TO BE REFINISHED AS SPECIFIED IN SECTION 09900 - PAINTING.
5. SPECIFIC SURFACE PREPARATION EXISTING CMU WALLS:
 - WATER BLAST
 - SCRAPE EXISTING PAINT TO SHOW SURFACE
 - SAND EXISTING COATINGS
 - REFINISH
6. VERIFY THAT MATERIALS SUPPLIED ARE COMPATIBLE WITH THE EXISTING COATINGS AND FINISHES.
7. PAINT AND FINISH ALL NEW PIPING AND EQUIPMENT AND OTHER ITEMS INSTALLED WITHIN THE EXISTING FACILITY. COORDINATE WITH ALL DRAWINGS AND SPECIFICATIONS WITHIN THE CONTRACT DRAWINGS.
8. PROVIDE SECONDARY CONTAINMENT COATINGS AT THE CHEMICAL AREAS ON THE FLOOR AND CONCRETE AND CMU WALLS.
9. ALL INTERIOR EXPOSED CONCRETE SHALL RECEIVE EPOXY PAINT.



<p>PORTLAND WATER DISTRICT PORTLAND, MAINE EAST END WWTF DISINFECTION AND DECHLORINATION SYSTEMS UPGRADE</p> <p>SCHEDULES AND DETAILS</p>	<p>Wright-Pierce Offices throughout New England www.wright-pierce.com</p>	DRAWN BY RAO CHECKED BY WJF/PFB DATE 2-18-05 APPROVED BY WJF/PFB DATE 2-18-05 BOOK NO. - PROJECT NO. 10301C SCALE NO SCALE	REVISIONS APP'D DATE	PROGRESS PRINTS ISSUED FOR REVIEW: 12-15-04 ISSUED FOR BIDDING: 2-18-05 FILENAME:	
		NO 1 2 3	DATE DATE DATE	FF 58	MALT LOCATION: JUST MARKED ON:
		DWG S-5 8 OF 33	PORTLAND WATER DISTRICT PORTLAND, MAINE EAST END WWTF DISINFECTION AND DECHLORINATION SYSTEMS UPGRADE	PROJECT NO. 10301C SCALE NO SCALE	MALT LOCATION: JUST MARKED ON: