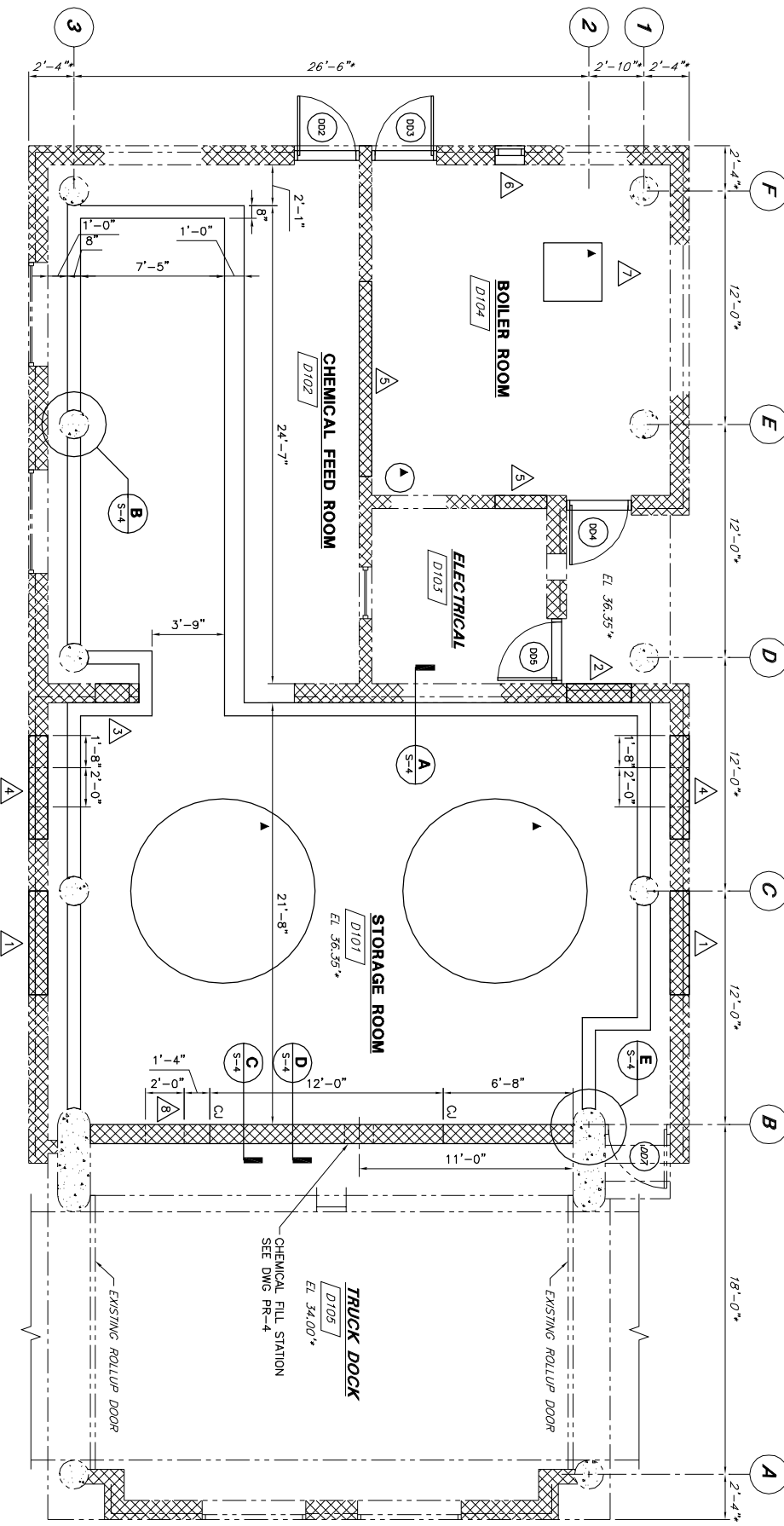


BISULFITE BUILDING - DEMOLITION PLAN
(FORMER CHLORINATION BUILDING)
SCALE: 1/4" = 1'-0"

- NOTES:**
- INDICATES DIMENSIONS TAKEN FROM RECORD DRAWINGS FOR PORTLAND WATER DISTRICT POLLUTION ABATEMENT FACILITIES. CONTRACT NO. 6, MARCH 1981 BY CAMP DRESSER AND MCKEE INC. CONSULTING ENGINEERS. GENERAL CONTRACTOR SHALL FIELD VERIFY ALL DIMENSIONS AND ELEVATIONS AND NOTIFY THE ENGINEER OF ANY DISCREPANCIES.
 - REFER TO DRAWING S-1 FOR GENERAL NOTES.
 - REFER TO DRAWING S-5 FOR DOOR AND ROOM FINISH MODIFICATIONS.
- DEMOLITION NOTES:**
- REMOVE EXISTING LOUVER AND FRAME.
 - REMOVE EXISTING DOOR, FRAME, TRANSOM AND HARDWARE.
 - REMOVE EXISTING MONORAIL DOOR AND FRAME.
 - REMOVE EXISTING MONORAIL HOIST, TRACK AND SUPPORTS AND FRAME.
 - REMOVE EXISTING CONCRETE PAD.
 - REMOVE EXISTING WINDOW AND FRAME.



BISULFITE BUILDING - MODIFICATION PLAN
(FORMER CHLORINATION BUILDING)
SCALE: 1/4" = 1'-0"

- MODIFICATION NOTES:**
- MASONRY INFILL AT LOUVERS TO BE 4" SPLIT FACED AND 8" CMU TO MATCH EXISTING.
 - INFILL AT EXISTING DOORWAY WITH 4" SPLIT FACED AND 8" CMU TO MATCH EXISTING.
 - INFILL AT EXISTING LOUVER OPENING WITH 12" CMU TO MATCH EXISTING. SEE HVAC DRAWINGS FOR LOCATION.
 - INFILL AT EXISTING LOUVER OPENING WITH 4" SPLIT FACED AND 8" CMU TO MATCH EXISTING. PROVIDE NEW 2'-0" SQUARE LOUVERS AND DAMPERS. LOCATE TOP OF LOUVER AT UNDERSIDE OF CONCRETE BEAM.
 - INFILL AT EXISTING WINDOW WITH 8" CMU TO MATCH EXISTING.
 - NEW OPENING FOR 18" x 18" LOUVER. BOTTOM OF OPENING SHALL BE 16" ABOVE FINISH FLOOR.
 - CORE HOLE IN EXISTING ROOF FOR NEW BOILER VENT. CONTRACTOR SHALL COORDINATE LOCATION AND SIZE. PROTECT EXISTING ROOF FROM DAMAGE. ALL WORK ON EXISTING ROOF SHALL BE MADE WATERTIGHT AT THE END OF EACH DAY. SEE DETAIL G ON DRAWING S-4 FOR FLASHING DETAIL.
 - 2'-0" x 1'-6" LOUVER OPENING. LOCATE TOP OF LOUVER AT UNDERSIDE OF CONCRETE BEAM.

NO.	REVISIONS	APP'D	DATE	PROGRESS PRINTS
1				ISSUED FOR REVIEW: 12-15-04
2				ISSUED FOR BIDDING: 2-18-05
3				WALT LOCATION: PF 58
4				LAST WORKED ON:
5				FILENAME:

DRAWN BY RAO
CHECKED BY WJF/PFB
DATE 2-18-05
APPROVED BY WJF/PFB
DATE 2-18-05
BOOK NO. —
PROJECT NO. 10301C
SCALE AS NOTED



PORTLAND WATER DISTRICT
PORTLAND, MAINE
EAST END WWTF DISINFECTION AND
DECHLORINATION SYSTEMS UPGRADE
BISULFITE BUILDING
DEMOLITION AND MODIFICATION PLANS