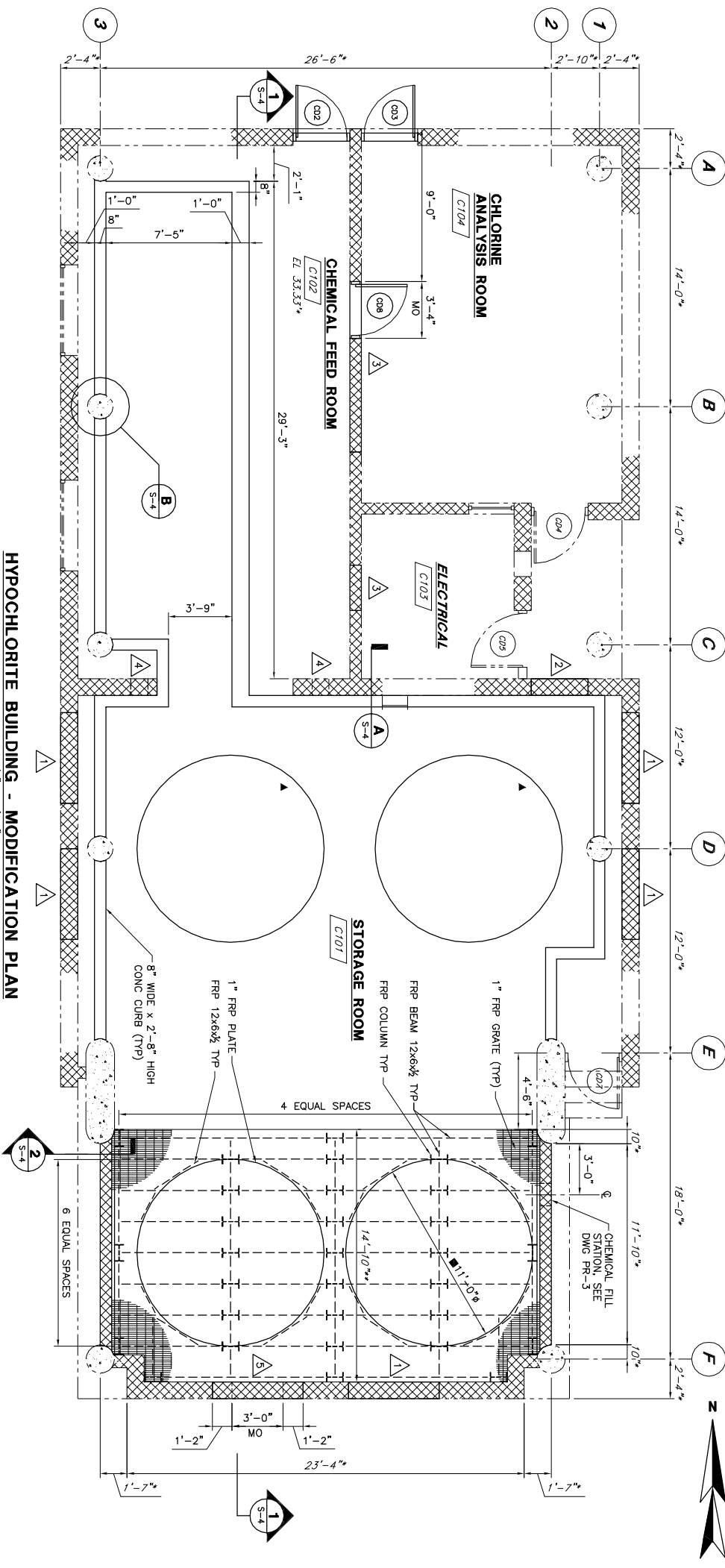


**HYPPOCHLORITE BUILDING - DEMOLITION PLAN**  
(FORMER DECHLORINATION BUILDING)  
SCALE: 1/4" = 1'-0"

- NOTES:**
- INDICATES DIMENSIONS TAKEN FROM RECORD DRAWINGS FOR PORTLAND WATER DISTRICT WASTEWATER TREATMENT PLANT, NEW CHLORINATION/DECHLORINATION FACILITY, MARCH 1992, BY CAMP DRESSER AND MCKEE INC. CONSULTING ENGINEERS. GENERAL CONTRACTOR SHALL FIELD VERIFY ALL DIMENSIONS AND ELEVATIONS AND NOTIFY THE ENGINEER OF ANY DISCREPANCIES.
  - INDICATES GENERAL CONTRACTOR SHALL COORDINATE EXACT DIMENSION WITH EQUIPMENT.
  - PLATFORM DESIGN LIVE LOAD PLATE AND FRAMING BENEATH TANK SHALL BE DESIGNED TO SUPPORT 800 PSF. REMAINING GRATING AND FRAMING SHALL BE DESIGNED TO SUPPORT 50 PSF.
  - REFER TO DRAWING S-1 FOR GENERAL NOTES.
  - REFER TO DRAWING S-5 FOR DOOR AND ROOM FINISH MODIFICATIONS.
- DEMOLITION NOTES:**
- REMOVE EXISTING LOUVER AND FRAME.
  - REMOVE EXISTING DOOR, FRAME, TRANSOM AND HARDWARE.
  - REMOVE EXISTING MONORAIL DOOR AND FRAME.
  - REMOVE EXISTING MONORAIL HOIST, TROLLEY, TRACK AND SUPPORTS AND FRAME AND ALL ASSOCIATED HARDWARE.
  - REMOVE EXISTING LADDER.
  - PLUG EXISTING FLOOR DRAIN.
  - REMOVE EXISTING TRUCK SCALE AND ASSOCIATED HARDWARE.
  - REMOVE EXISTING WINDOW AND FRAME.
  - MODIFY LADDER TO CLEAR NEW CONTAMINANT CURB.
  - REMOVE EXISTING ROLLUP DOOR AND FRAME. OWNER WILL RETAIN.
  - REMOVE EXISTING CONCRETE PAD.



**HYPPOCHLORITE BUILDING - MODIFICATION PLAN**  
(FORMER DECHLORINATION BUILDING)  
SCALE: 1/4" = 1'-0"

- MODIFICATION NOTES:**
- INFILL AT EXISTING LOUVER OPENING WITH 12" SPLIT FACED CMU TO MATCH EXISTING.
  - INFILL AT EXISTING DOORWAY WITH 12" SPLIT FACED CMU TO MATCH EXISTING.
  - INFILL AT EXISTING WINDOWS WITH 8" CMU TO MATCH EXISTING.
  - INFILL AT EXISTING OPENING FOR NEW HVAC DUCT WORK WITH 12" CMU TO MATCH EXISTING.
  - INFILL AT EXISTING LOUVER OPENING WITH 12" SPLIT FACE CMU. PROVIDE NEW 3'-0" SQUARE LOUVERS AND DAMPER. LOCATE TOP OF LOUVER AT EL 42.00'.

DWG S-2 5 OF 33	PORTLAND WATER DISTRICT PORTLAND, MAINE EAST END WWTF DISINFECTION AND DECHLORINATION SYSTEMS UPGRADE HYPPOCHLORITE BUILDING DEMOLITION AND MODIFICATION PLANS	Wright-Pierce Offices throughout New England www.wright-pierce.com	DRAWN BY RAO CHECKED BY WJF/PFB DATE 2-18-05 APPROVED BY WJF/PFB DATE 2-18-05 BOOK NO. — PROJECT NO. 10301C SCALE AS NOTED	REVISIONS NO. 1 2 3 4 5	APP'D DATE	PROGRESS PRINTS ISSUED FOR REVIEW: 12-15-04 ISSUED FOR BIDDING: 2-18-05 VAILT LOCATION: PF 58 LAST WORKED ON: FILENAME:
			NO. 1 2 3 4 5	DATE	FILENAME:	