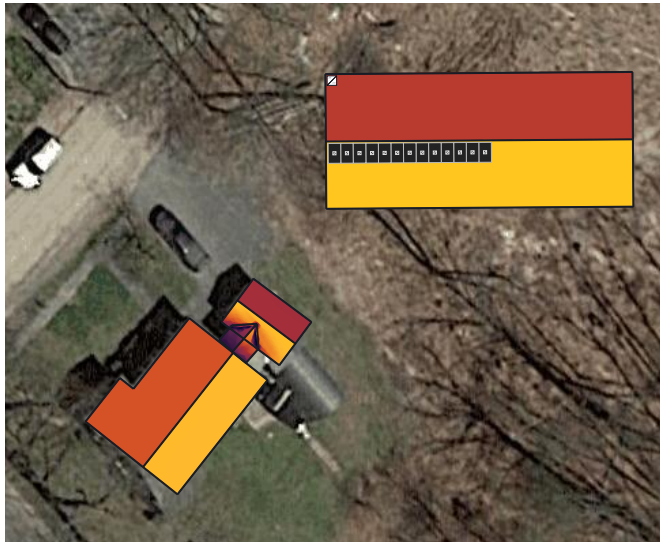


Site Assessment

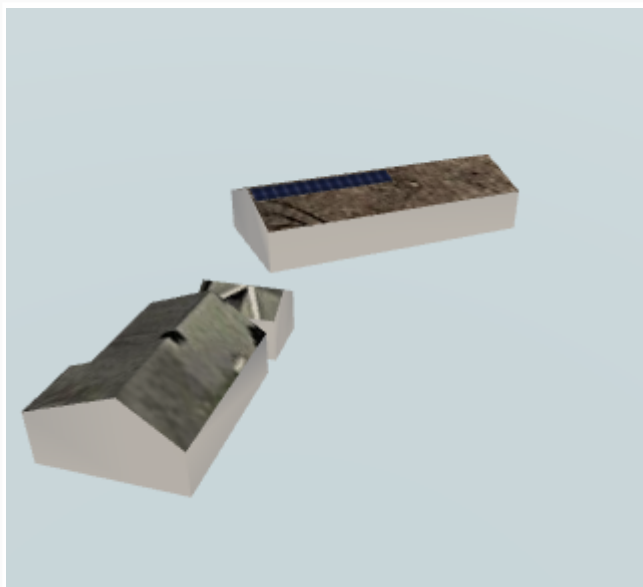
Customer: Frank Toderico
Address: 85 Wall St, Portland, ME 04103, USA

System size: 3.77
Designer: Andrew Robitaille
Date: July 12th, 2017



Component List

Type	Manufacturer	Model	Quantity
Module	REC	REC290TP	13
DC Optimizer	SolarEdge Technologies Inc.	P300	13
Inverter	SolarEdge Technologies Inc.	SE3800A-US (240V)	1



Notes: - Building dimensions are pproximately 85*36ft and conduit to run externally along the fascia. Panels to be mounted using SnapNRack Series 100 mounting system, (Flush)approximately 3-6 inches above shingle surface.