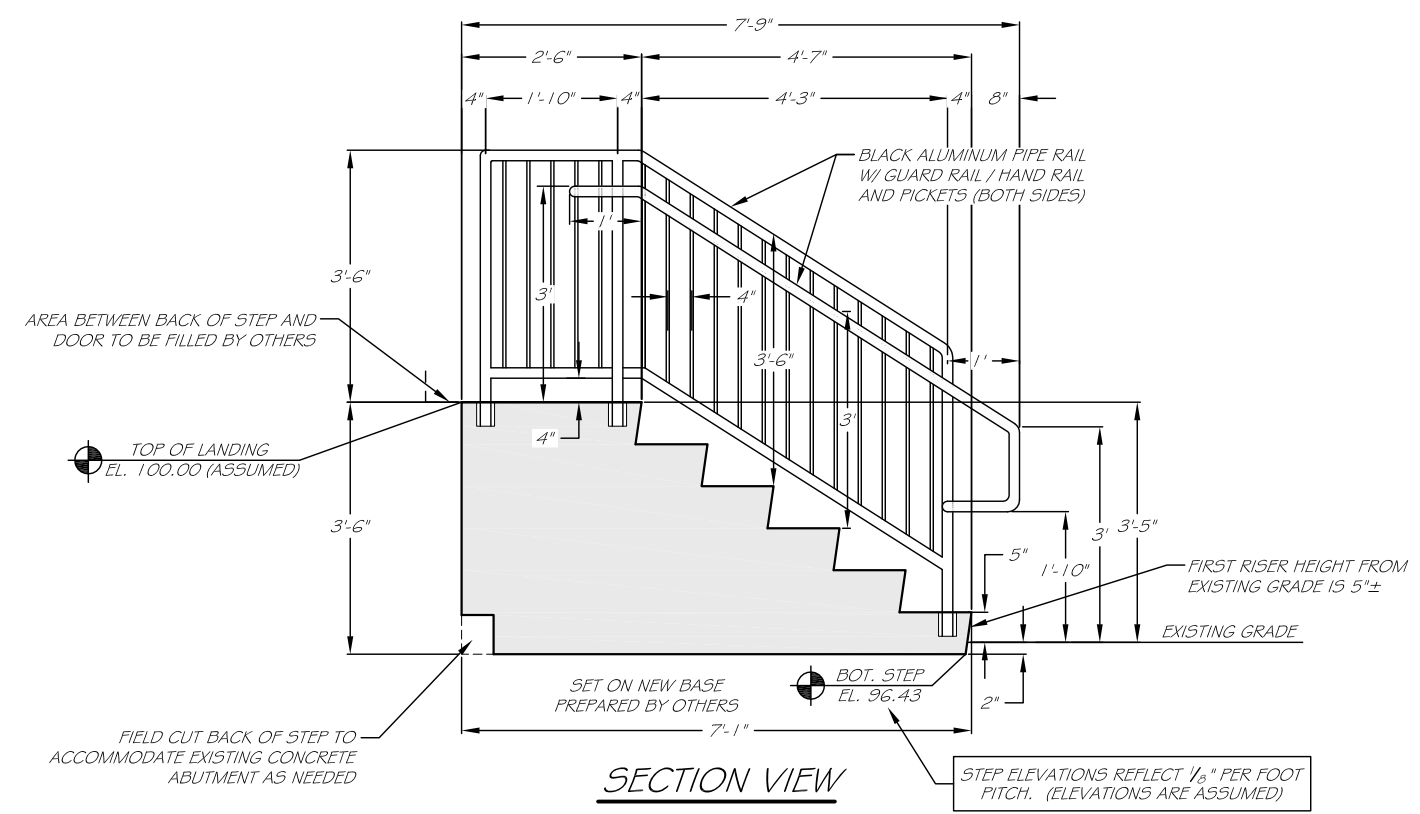
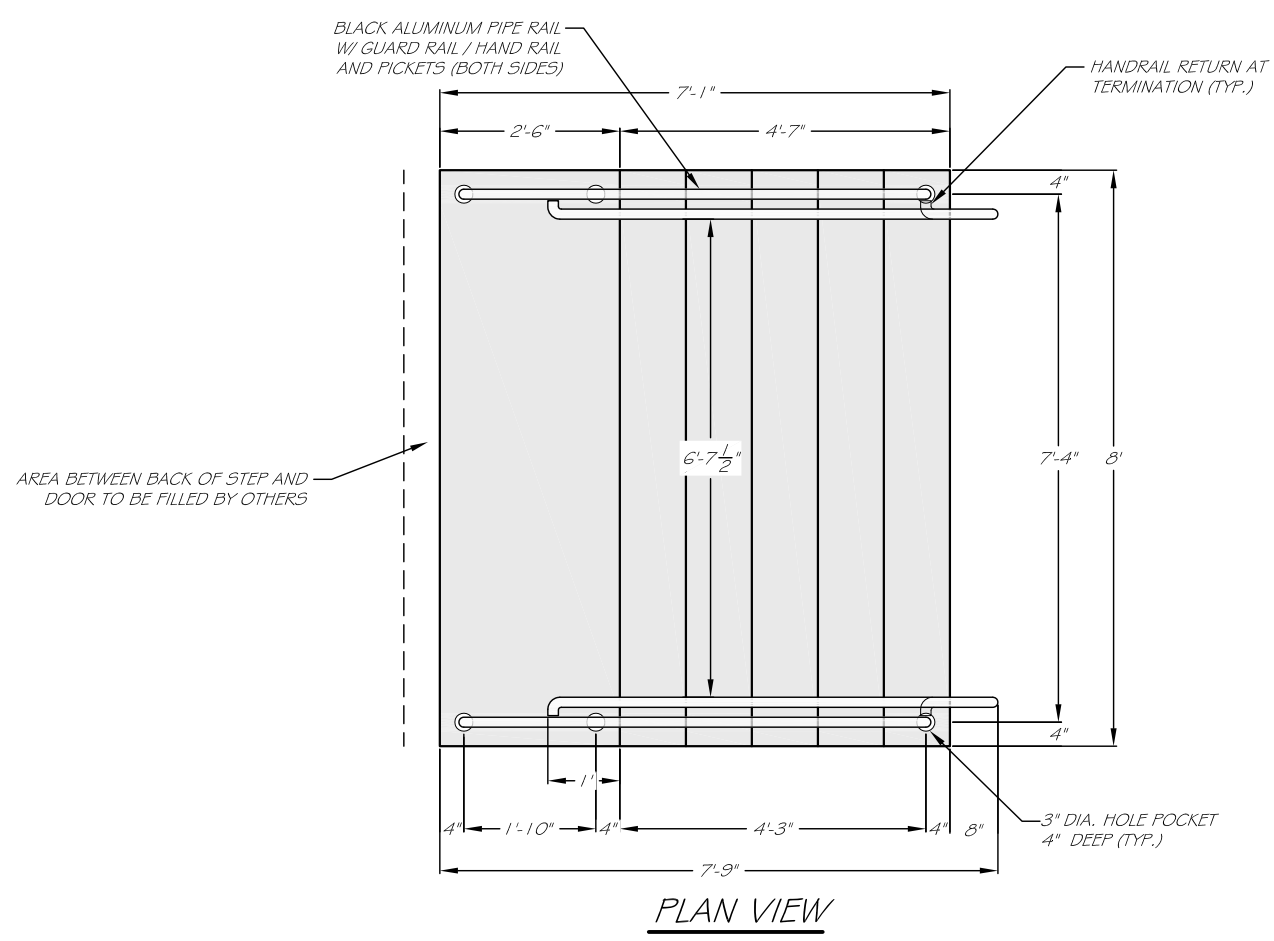


NOTE: STEPS TO BE INSTALLED WITH A
DOWNWARD PITCH OF 1/8" PER FOOT

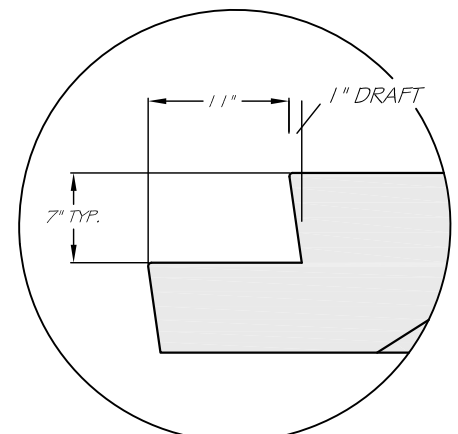


SECTION VIEW

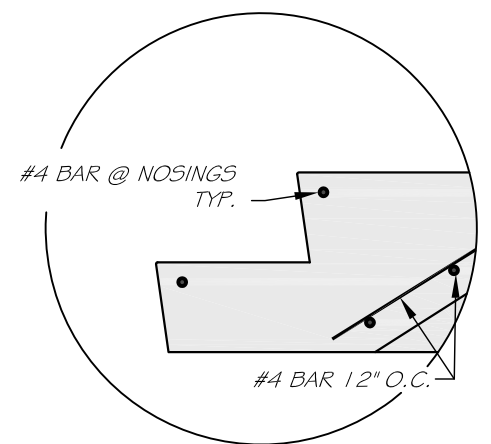
- CONSTRUCTION NOTES:**
1. EXISTING ROOF TO BE SUPPORTED ON SIDES BY OTHERS DURING INSTALLATION.
 2. REMOVAL AND DISPOSAL OF EXISTING STEPS BY OTHERS.
 3. SET ON NEW BASE PREPARED BY OTHERS.



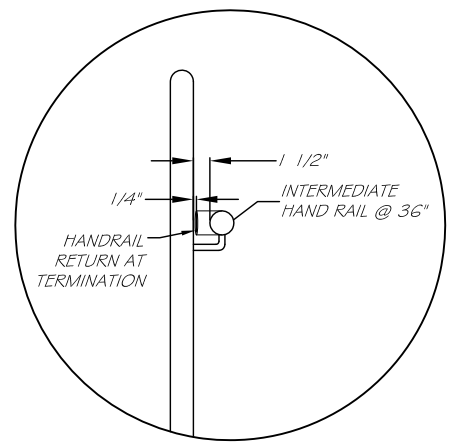
PLAN VIEW



TREAD DETAIL



REINFORCEMENT DETAIL



HANDRAIL DETAIL

- NOTES:**
- 1) CONCRETE: 5,000 PSI @ 28 DAYS.
 - 2) CEMENT: TYPE III PER ASTM C150-81.
 - 3) REINFORCING: #4 BAR @ 12" o.c.



REVISION:			
DATE:	8/29/2017	SCALE:	3/8" = 1'-0"
ENGINEER:		SHEET #	1
CONTRACTOR:	PHILOMENA RUSSELL	DWG BY:	PJC
LOCATION:		LOCATION:	PORTLAND, ME
JOB:		JOB:	1435 FOREST AVE.

George R. Roberts Co.
& The Step Guys

Precast Concrete Products
 (Maine) 207-324-6571
 (Outside Maine) 800-244-6571
 192 Biddeford Road
 Alfred, Maine 04002
 www.georgerobertsco.com
 FAX 207-324-8533