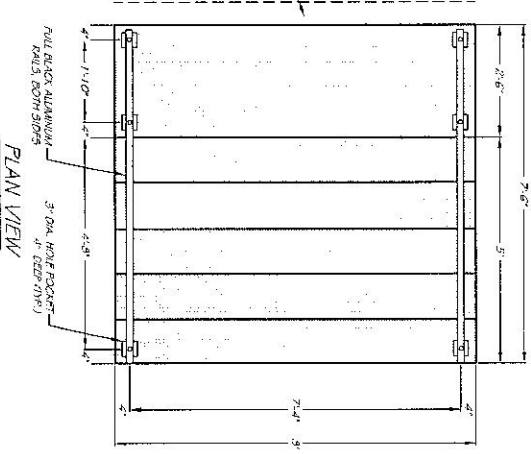
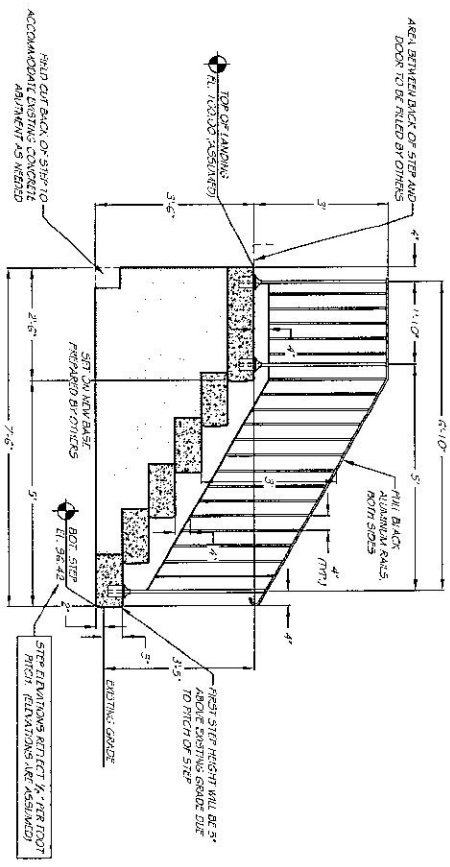




AREA BETWEEN BACK OF STEP AND DOOR TO BE FILLED BY OTHERS

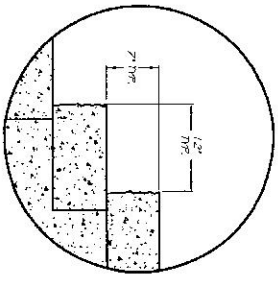


PLAN VIEW

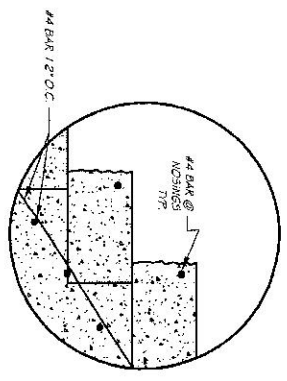


SECTION VIEW

CONSTRUCTION NOTES:  
 1. EXISTING ROOF TO BE SUPPORTED ON BEAMS BY OTHERS DURING INSTALLATION.  
 2. REMOVE ALL AND DISPOSED OF EXISTING STEPS BY OTHERS.  
 3. SET ON NEW BASE PREPARED BY OTHERS.



TREAD DETAIL



REINFORCEMENT DETAIL

NOTES:  
 1) CONCRETE 3,000 PSI @ 28 DAYS  
 2) CEMENT: THREE (3) PER ASTM C150 B1.  
 3) REINFORCING: #4 BAR @ 12" O.C.

**George R. Roberts Co.**  
 & The Step Guys  
 Precast Concrete Products  
 192 Biddeford Road (Maine) 207-324-6571  
 Alfred, Maine 04002 (Outside Maine) 800-244-6571  
 www.georgerobertsco.com FAX 207-324-8533

ROCK-A-FELLA STEP PLAN		DATE:	REVISION:
CONTRACTOR: PHILOMENA RUSSELL		5/29/27	
ENGINEER:		SCALE:	
JOB: 1435 FOREST AVE.		3/8" = 1'-0"	
LOCATION: PORTLAND, ME		SHEET #	DWG BY:
		1	PJC