

BUILDING AREA = 16,509 SF

NEW WALL - STUD & GYP. BD.	
EXISTING WALL OR FLOOR	
DEMO AND REMOVE	
EXISTING DOOR	
	DEMO
	E.T.R.
NEW DOOR	

- NOTES:
1. PROVIDE SPRINKLER SYSTEM
 2. REFURBISH EXISTING WINDOWS AND PROVIDE NEW INTERIOR STORM WINDOWS
 3. PROVIDE NEW ROOFTOP HVAC SYSTEM AND DUCTS.

TYPICAL FINISHES
 FLOOR: NEW VCT
 CEILING: NEW 1X1 ACT
 WALLS: PAINT EXG CMU

NEW PAVING, TYP

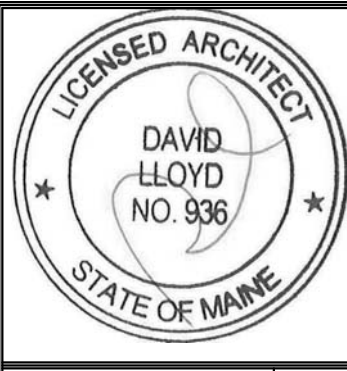
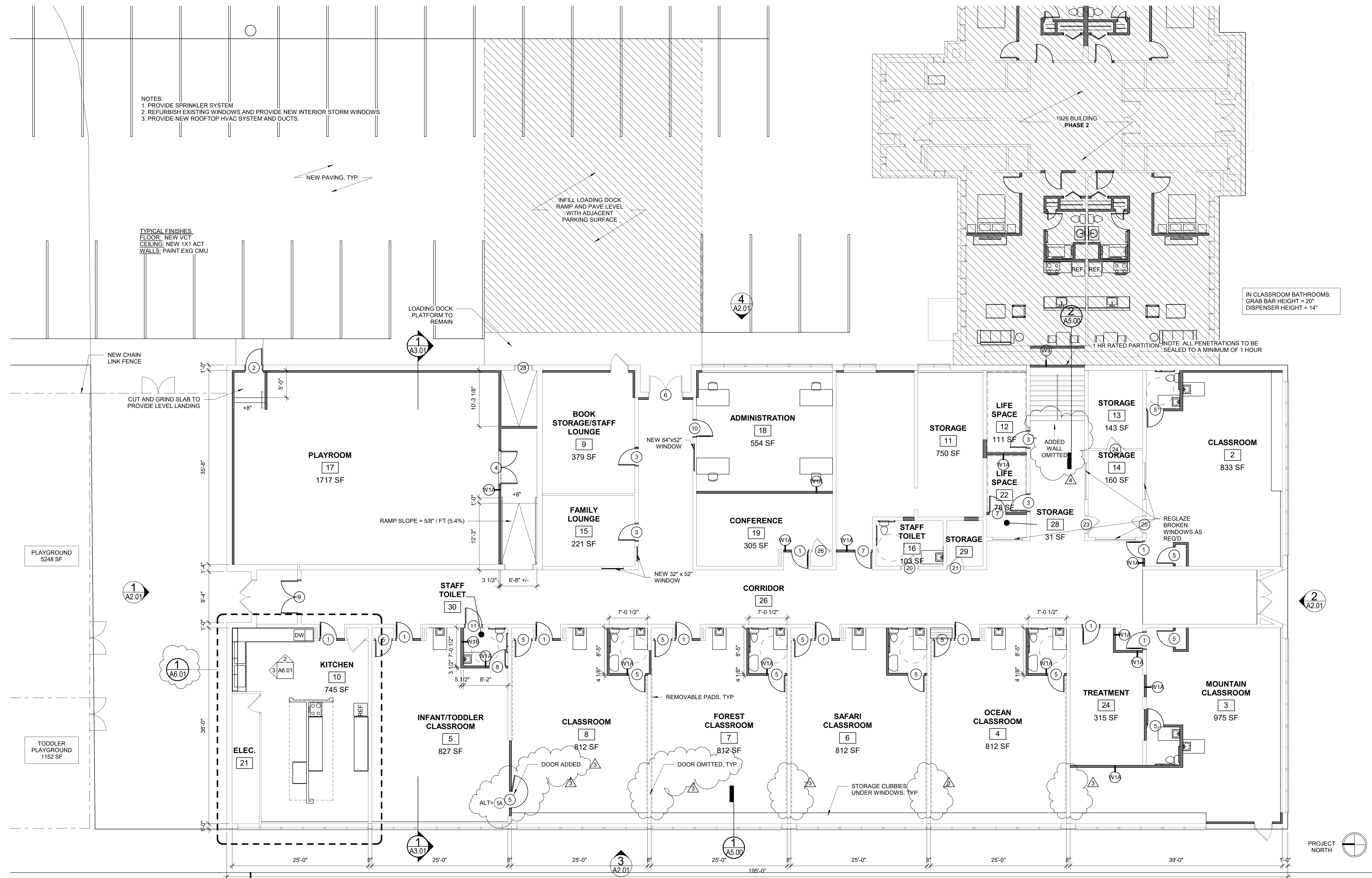
INFILL LOADING DOCK
 RAMP AND PAVE LEVEL
 WITH ADJACENT
 PARKING SURFACE

LOADING DOCK
 PLATFORM TO
 REMAIN

1926 BUILDING
 PHASE 2

IN CLASSROOM BATHROOMS:
 GRAB BAR HEIGHT = 20"
 DISPENSER HEIGHT = 14"

NOTE: ALL PENETRATIONS TO BE
 SEALED TO A MINIMUM OF 1 HOUR



Prepared For:
Children's Odyssey

Consultant:
ARCHETYPE architects
 48 Union Wharf Portland, Maine 04101
 (207) 772-0023 ARCHETYPE@ARCHETYPEPA.COM

Project:
CHILDREN'S ODYSSEY
 19 LIBBY STREET
 PORTLAND, ME 04103

Revisions:	Date	Revision
3	2/12/18	Revision
4	3/9/18	Revision

Date: OCT, 2016
 Scale: 1/8" = 1'-0"
FLOOR PLAN

A1.01

1 1ST FLOOR - NEW
 1/8" = 1'-0"

