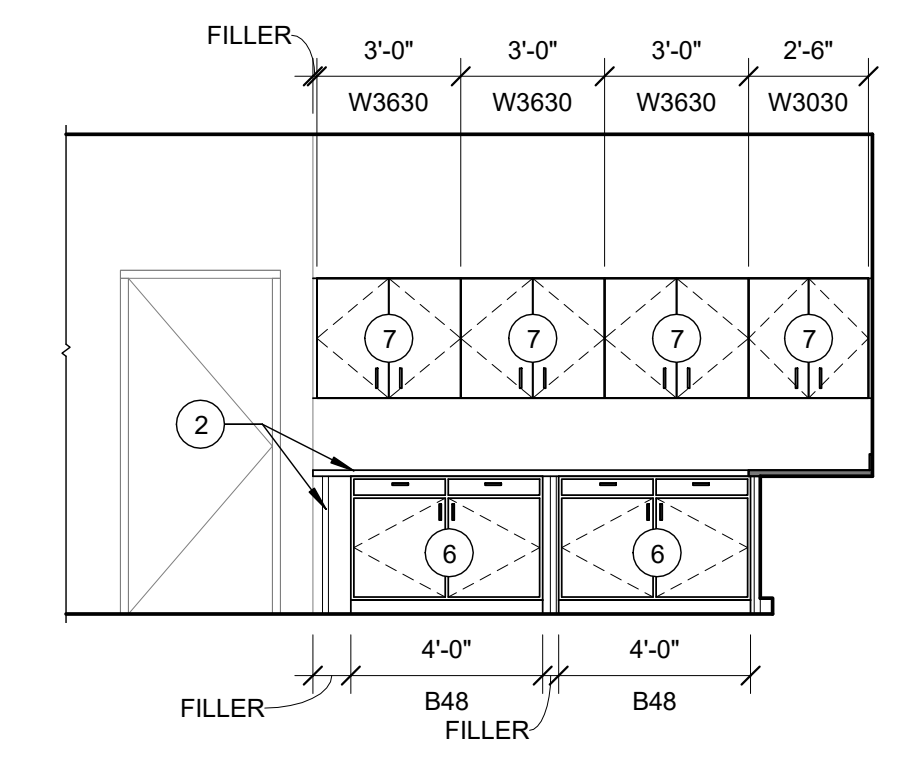
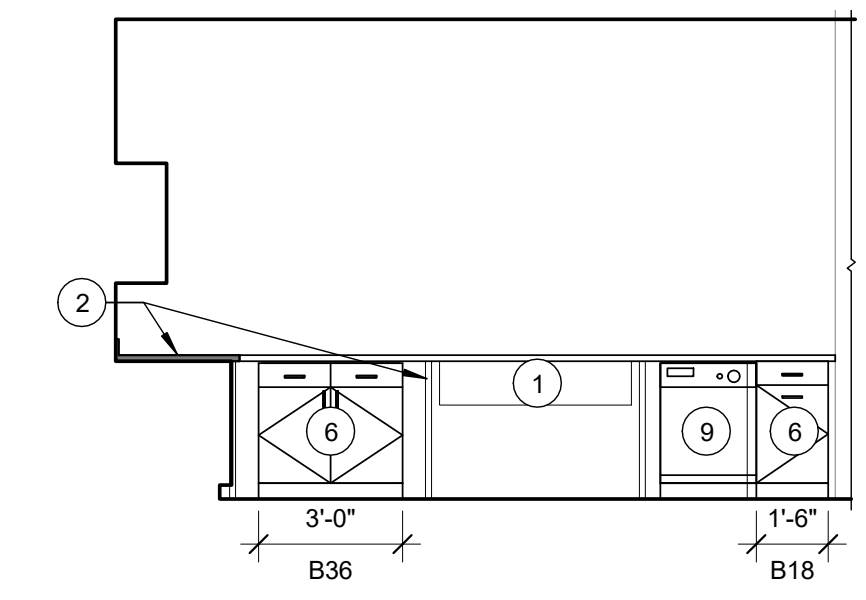


EQUIPMENT NOTES

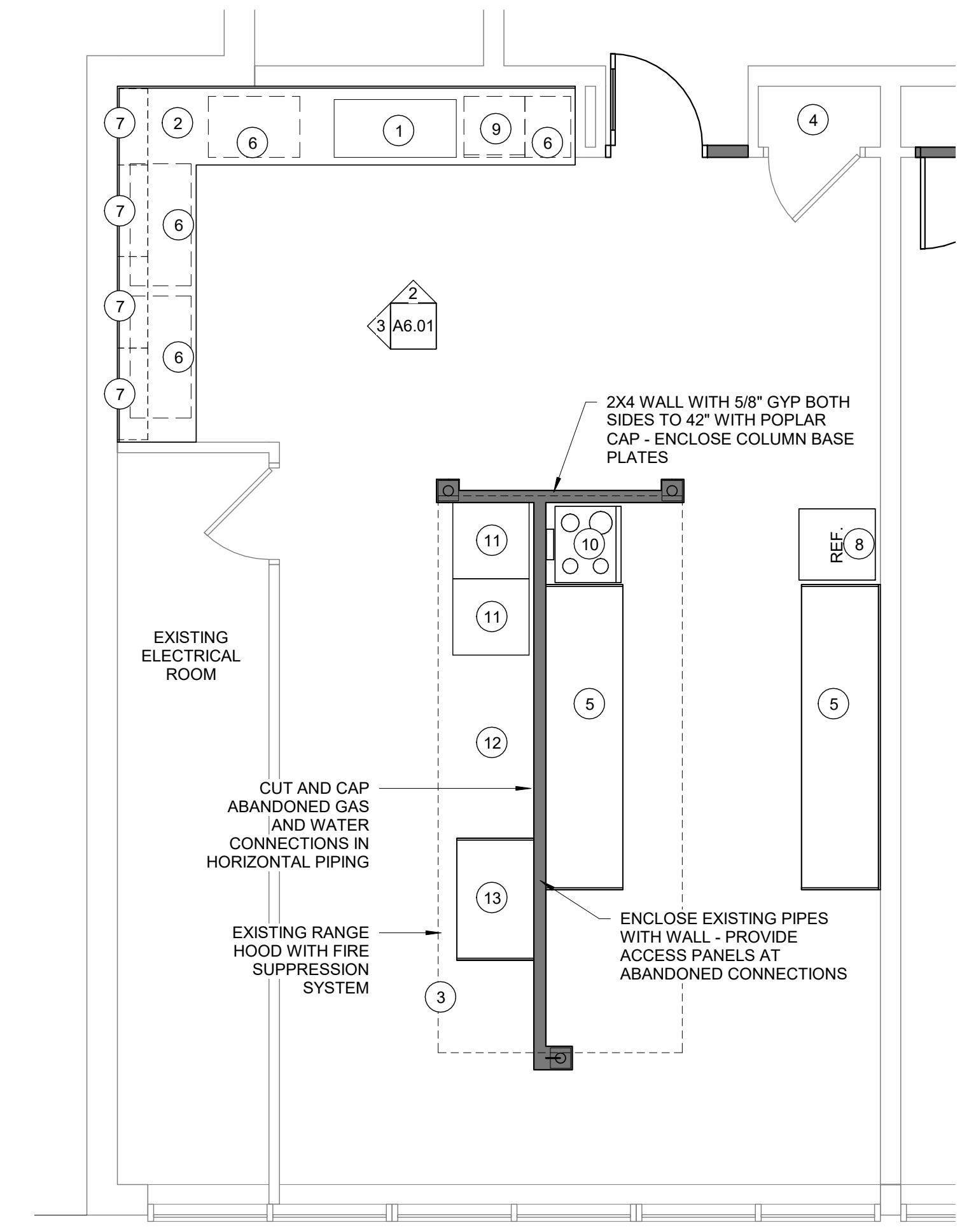
1. EXISTING SINK TO REMAIN
2. EXISTING STAINLESS COUNTERS ON LEGS TO REMAIN
3. EXISTING COMMERCIAL HOOD TO REMAIN
4. EXISTING ADJUSTABLE SHELVING TO REMAIN - PAINT AND REFURBISH
5. RELOCATED 10"0" STAINLESS STEEL COUNTERS
6. BASE CABINET - ALT. OPEN CHROME WIRE SHELVING
7. WALL CABINET - ALT. OPEN CHROME WIRE SHELVING
8. REFRIGERATOR
9. DISHWASHER IN PREFINISHED FRAME KIT
10. GAS RANGE
11. RELOCATED UTILITY SINK
12. WASHER/DRYER HOOK-UP
13. 48" LONG LAUNDRY COUNTER



3 | NORTH KITCHEN ELEVATION
1/4" = 1'-0"



2 | EAST KITCHEN ELEVATION
1/4" = 1'-0"



1 | KITCHEN PLAN
1/4" = 1'-0"

Prepared For:
Children's Odyssey

Architect:
ARCHETYPE architects
48 Union Wharf Portland, Maine 04101
(207) 772-6022 ARCHETYPE@ARCHETYPEPA.COM

Project:
CHILDREN'S ODYSSEY
19 LIBBY STREET
PORTLAND, ME 04103

Revisions:

Date: OCT, 2016
Scale: 1/4" = 1'-0"
KITCHEN PLAN & ELEVATIONS

A6.01