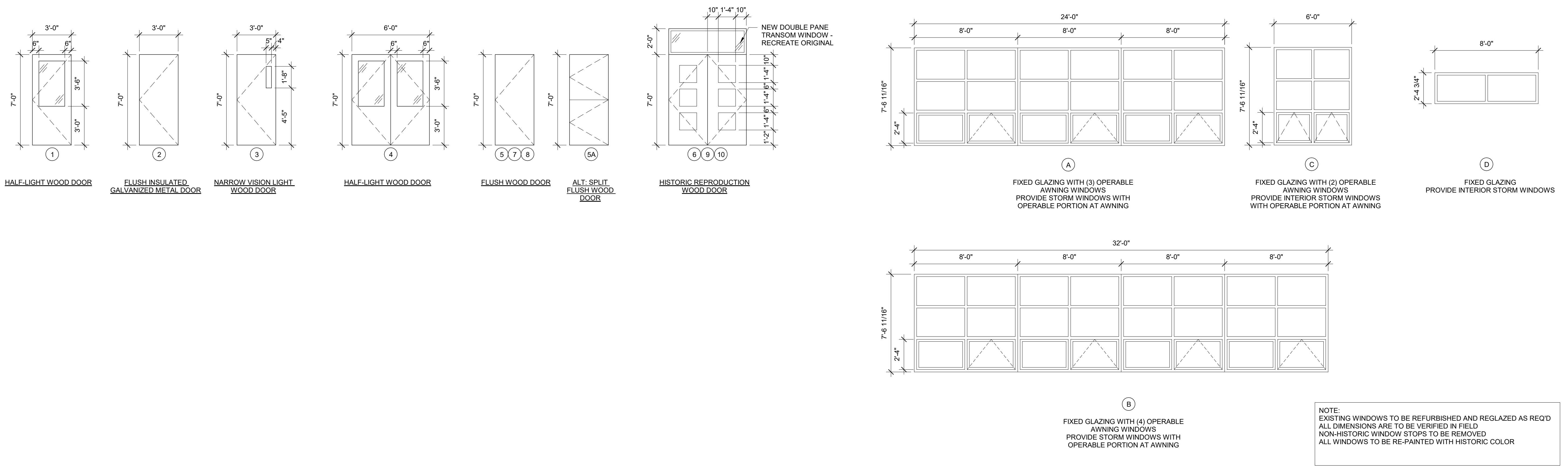
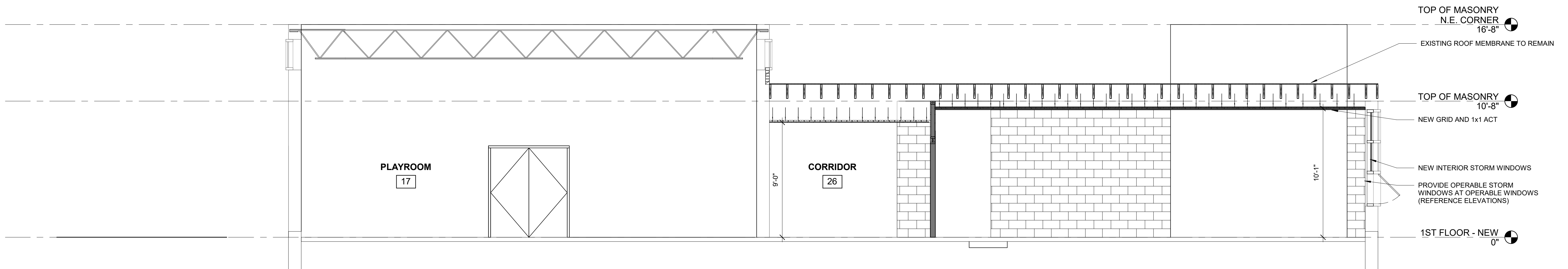


**DOORS & WINDOWS**

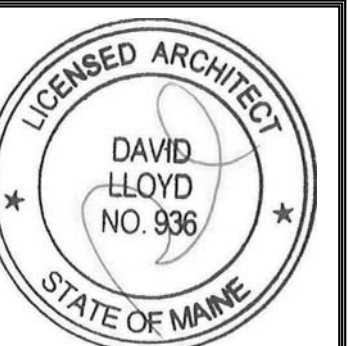


NOTE:  
EXISTING WINDOWS TO BE REFURBISHED AND REGLAZED AS REQ'D  
ALL DIMENSIONS ARE TO BE VERIFIED IN FIELD  
NON-HISTORIC WINDOW STOPS TO BE REMOVED  
ALL WINDOWS TO BE RE-PAINTED WITH HISTORIC COLOR

PUBLIC AREA DOOR SCHEDULE											
DOOR No.	SIZE			DOOR FRAME		THRESHOLD	LABEL	OPERATION	SWEEP	CLOSER	REMARKS
	WIDTH	HEIGHT	THICKNESS	MATERIAL	FINISH						
1ST FLOOR - NEW											
1	3'-0"	7'-0"	1 3/4"	HM		ALUM		PASSAGE		Yes	
2	3'-0"	7'-0"	1 3/4"	HM		ALUM		EXIT		Yes	PTD INSULATED GALVANIZED DOOR
3	3'-0"	7'-0"	1 3/4"	HM		ALUM		PASSAGE			
4	6'-0"	7'-0"	1 3/4"	HM		ALUM		PASSAGE			
5	3'-0"	7'-0"	1 3/4"	HM		ALUM		PASSAGE			
6	6'-0"	7'-0"	1 3/4"	HM		ALUM		EXIT		Yes	
7	3'-0"	7'-0"	1 3/4"	HM		ALUM		STORAGE			DOOR LATCH CAN BE OPENED FROM THE INSIDE
8	3'-0"	7'-0"	1 3/4"	HM		ALUM		PRIVACY			STAFF CAN OPEN BATHROOM DOOR WITH DEVICE
9	6'-0"	7'-0"	1 3/4"	HM		ALUM		PASSAGE		Yes	
10	3'-0"	7'-0"	1 3/4"	HM		ALUM		OFFICE		Yes	
20	3'-0"	7'-0"	1 3/4"					STORAGE			DOOR LATCH CAN BE OPENED FROM THE INSIDE
21	2'-10"	7'-0"	1 3/4"					PRIVACY			STAFF CAN OPEN BATHROOM DOOR WITH DEVICE
23	3'-0"	7'-0"	1 3/4"					STORAGE			EXISTING DOOR
24	3'-0"	7'-0"	1 3/4"					STORAGE			EXISTING DOOR
25	3'-0"	7'-0"	1 3/4"					STORAGE			EXISTING DOOR
26	3'-0"	7'-0"	1 3/4"					PASSAGE			EXISTING DOOR
28	3'-0"	7'-0"	1 3/4"								EXISTING DOOR - FIX SHUT



**1 BUILDING SECTION**  
1/4" = 1'-0"



Prepared For:  
**Children's Odyssey**

Address  
City, State

Consultant:



Architect:

Project:  
**CHILDREN'S ODYSSEY**

19 LIBBY STREET  
PORTLAND, ME 04103

Revisions:

Date: OCT, 2016  
Scale: 1/4" = 1'-0"  
**BUILDING SECTION, DOORS, AND WINDOWS**

**A3.01**