

Prepared For:
Children's Odyssey

Consultant:

ARCHETYPE architects
48 Union Wharf Portland, Maine 04101
(207) 772-6022 ARCHETYPE@ARCHETYPEPEA.COM

Project:

CHILDREN'S ODYSSEY
19 LIBBY STREET
PORTLAND, ME 04103

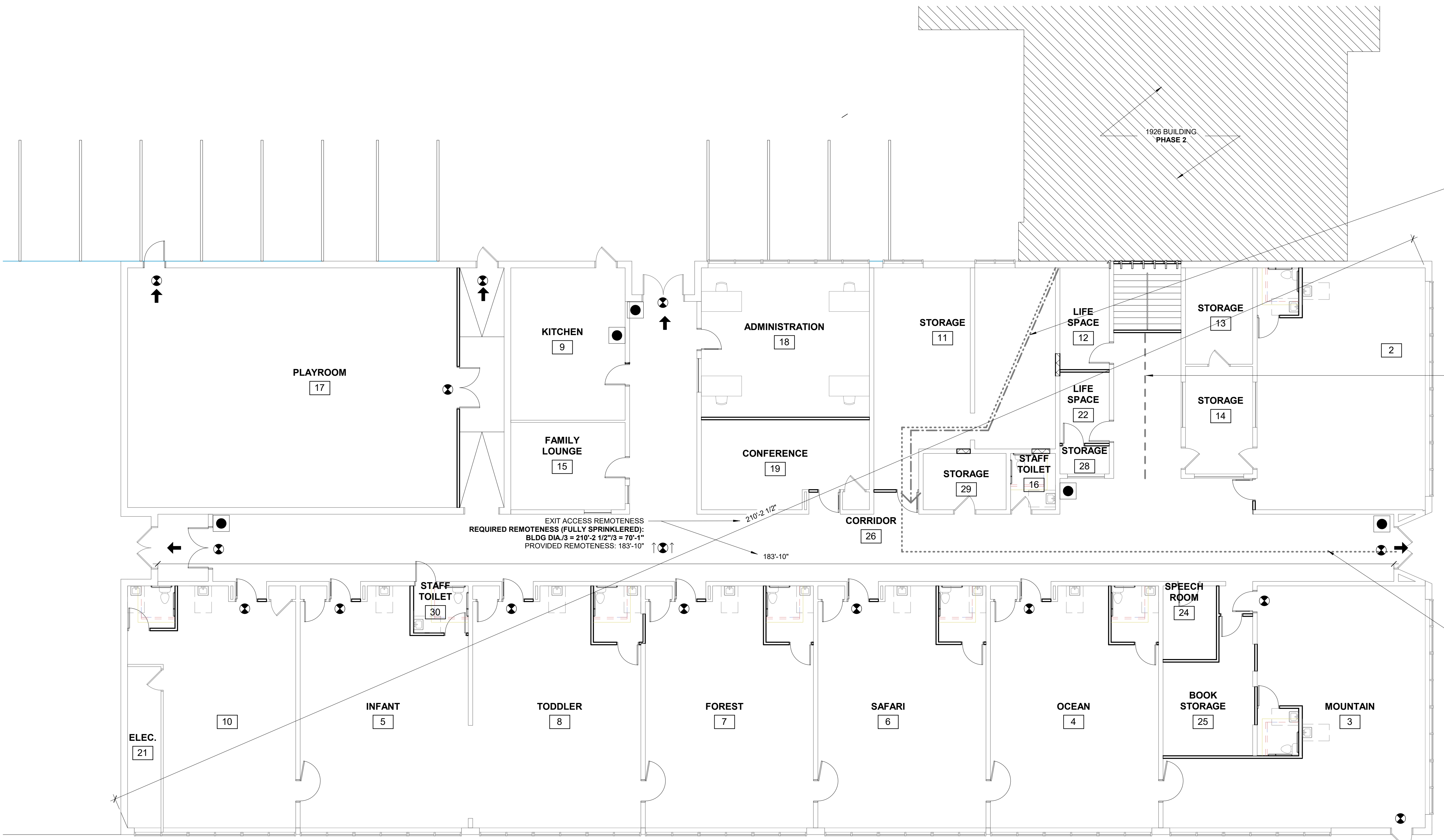
Revisions:

Date: OCT, 2016

Scale: 1/8" = 1'-0"
LIFE SAFETY

LS1.0

NEW WALL - 1 HOUR	
EXIT ACCESS	
TRAVEL DISTANCE	
DEAD END CORR.	
TRAVEL LENGTH	
COMMON PATH OF TRAVEL LENGTH	
EXIT ENTRANCE	
EXIT ENTRANCE	
FIRE EXTINGUISHER	

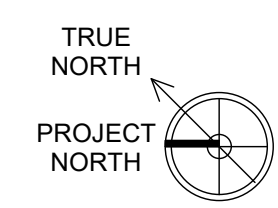


DISTANCE TO COMMON PATH OF TRAVEL = 48'-6"
(distance not to exceed 75'-0")
1014.3 2009 IBC (most restrictive)

DEAD END CORRIDOR DISTANCE = 21'-6"
(length < 2.5 x 10' = 25')
1018.4 Ex. 3 2009 IBC (most restrictive)

MAXIMUM TRAVEL DISTANCE TO EXIT = 130'-8"
(l-4 not to exceed 200' sprinklered)
1016.1 2009 IBC, NFPA 16.2.6.2-16.2.6.3

EXIT ACCESS REMOTENESS
REQUIRED REMOTENESS (FULLY SPRINKLERED):
BLDG DIA./3 = 210'-2 1/2"/3 = 70'-1"
PROVIDED REMOTENESS: 183'-10"



1 | 1ST FLOOR - LIFESAFETY
1/8" = 1'-0"