



Prepared For:
Children's Odyssey

Consultant:

Architect:
ARCHITYPE architects
48 Union Wharf Portland, Maine 04101
(207) 772-0022 ARCHITYPE@ARCHITYPEPA.COM

Project:
CHILDREN'S ODYSSEY
19 LIBBY STREET
PORTLAND, ME 04103

Revisions:

Scale: 1 1/2" = 1'-0"

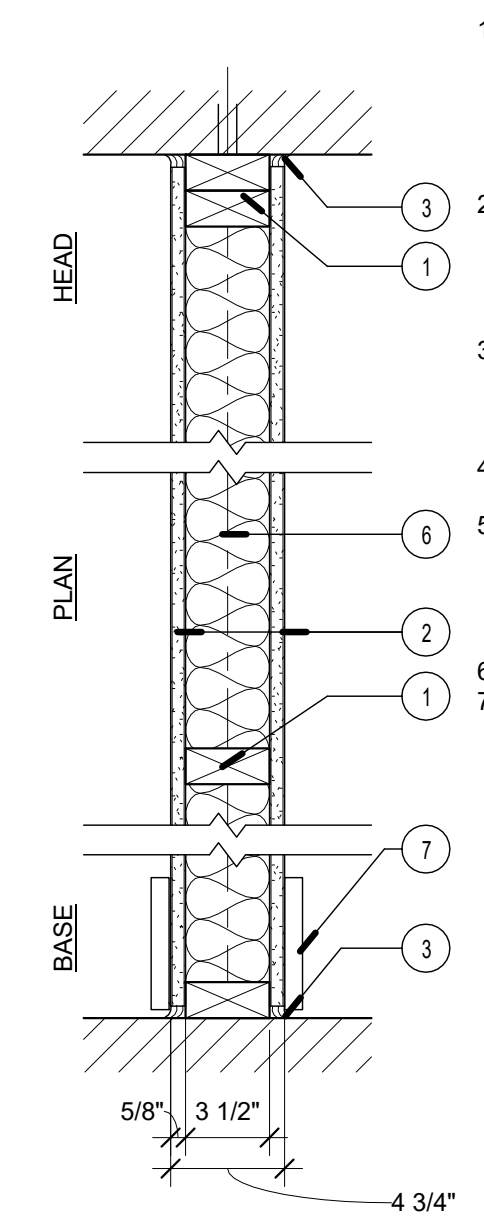
Date: OCT, 2016

WALL TYPES

A4.00

LABEL 1 HR W3

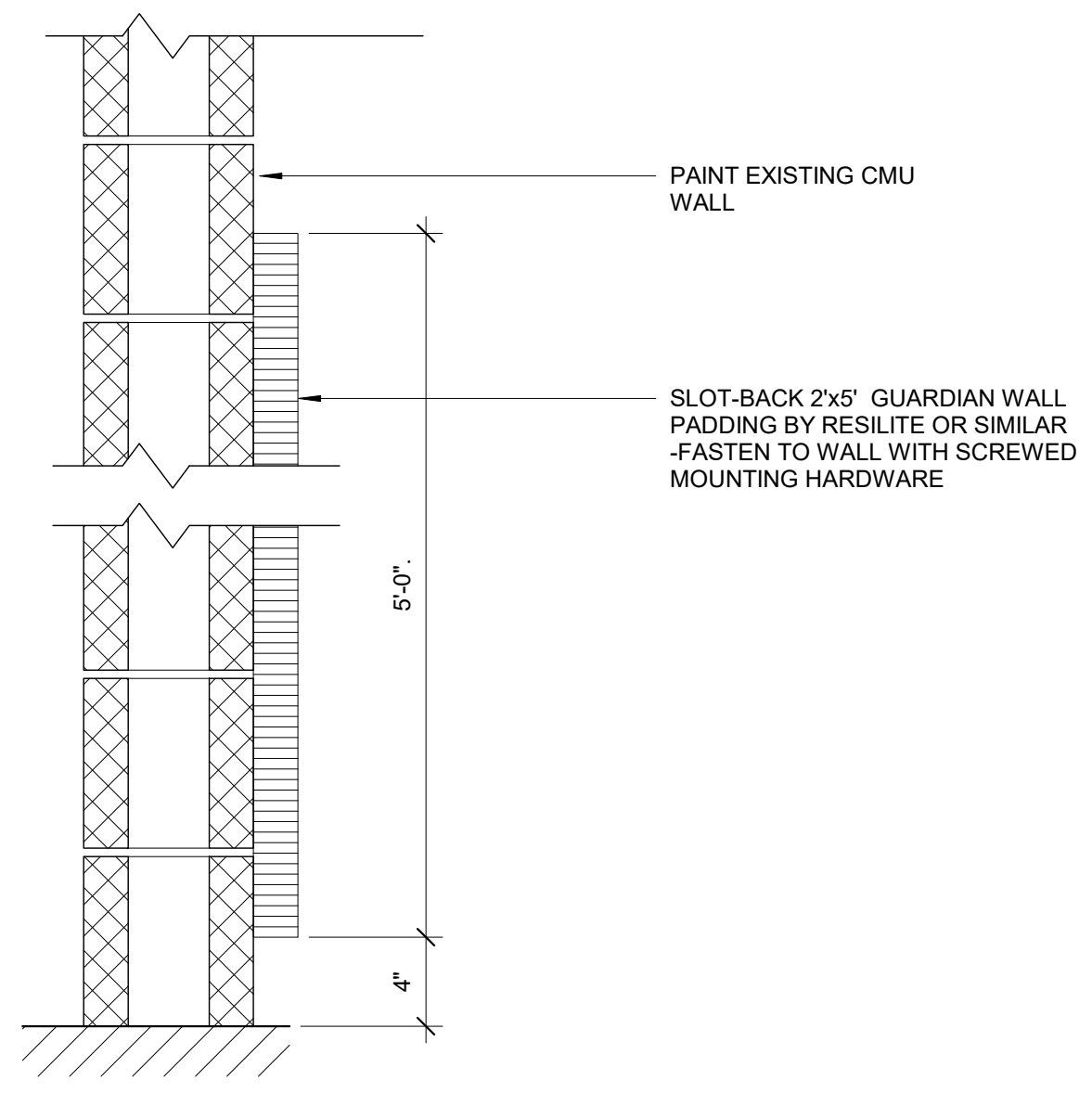
1 HR BEARING PARTITION
DESIGN NUMBER - U305
SOUND - N/A



1. **FRAMING** - WOOD STUDS, NOM. 2 IN BY 4 IN, DOUBLE TOP PLATE AND SINGLE BASE PLATE, OR 2X6 STEEL STUDS. SEE STRUCTURAL FOR STUD LAYOUT BRACING, AND FASTENERS. BOTTOM PLATES IN CONTACT WITH CONCRETE OR MASONRY TO BE PRESSURE TREATED.
2. **TYPE X GYP BOARD** - 5/8 IN. THICK, 4 FT WIDE, PAPER-SURFACED GYPSUM BOARD SECURED TO STUDS WITH 1 1/4" IN. LONG TYPE W COARSE THREAD GYPSUM PANEL STEEL SCREWS SPACED A MAX 8 IN. OC, WITH LAST SCREW 1 IN. FROM EDGE OF BOARD.
3. **CAULKING AND SEALANTS** - A BEAD OF FIRE RATED ACOUSTICAL SEALANT APPLIED AROUND THE PARTITION PERIMETER FOR SOUND CONTROL, BOTH SIDES OF WALL.
4. **BLOCKING - (NOT SHOWN)** WOOD BLOCKING AS NEEDED
5. **TAPE AND COMPOUND - (NOT SHOWN)** VINYL, DRY OR PREMIXED JOINT COMPOUND, APPLIED IN TWO COATS TO JOINTS AND SCREW HEADS, PAPER TAPE, 2 IN. WIDE, EMBEDDED IN FIRST LAYER OF COMPOUND OVER ALL JOINTS.
6. **SOUND INSULATION** - 3 1/2" FIBERGLASS BATTS
7. **BASE** - SEE FINISH SCHEDULE

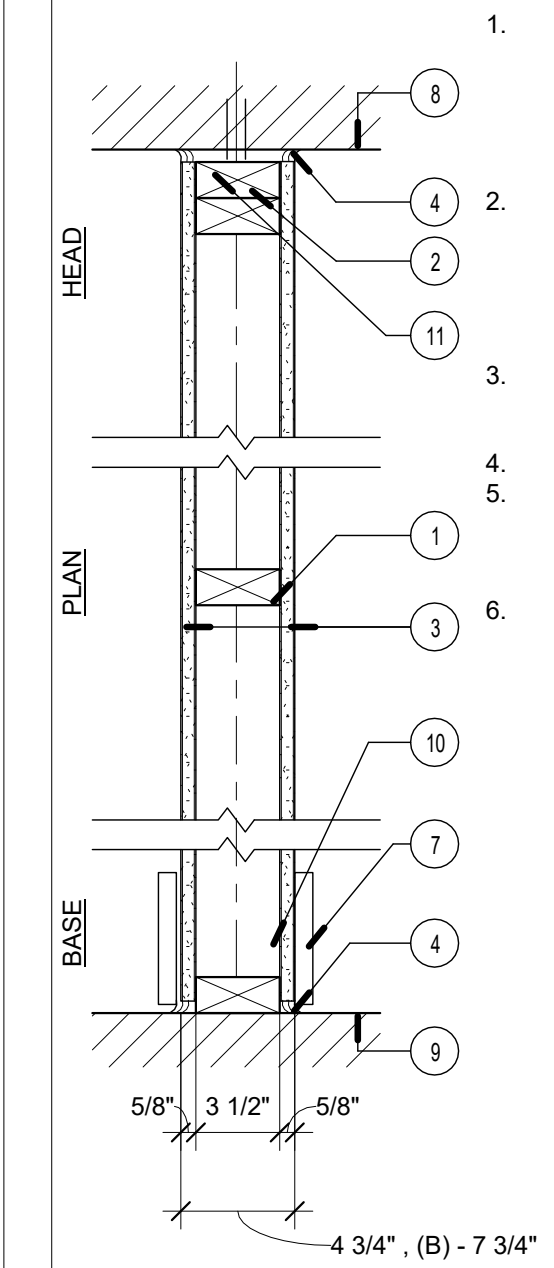
W3 WALL 03 - 1 HR RATED PARTITION
1 1/2" = 1'-0"

WALL PADDING DETAIL



W2 WALL PADDING FOR EXISTING CMU
1 1/2" = 1'-0"

W01A W01B NON-RATED PARTITION
2x4 2x6



1. **WOOD FRAMING** - WOOD STUDS, NOM. 2 IN BY 4 IN., DOUBLE TOP PLATE AND SINGLE BASE PLATE. SEE STRUCTURAL FOR STUD LAYOUT BRACING, AND FASTENERS. BOTTOM PLATES IN CONTACT WITH CONCRETE OR MASONRY TO BE PRESSURE TREATED. **NOTE: WALL TYPE 'B' USES 2x6 STUDS IN PLACE OF 2x4 STUDS.**
2. **TYPE X GYP BOARD** - 5/8 IN. THICK, 4 FT WIDE, GYPSUM BOARD SECURED TO STUDS WITH 1" LONG TYPE S-12 STEEL SCREWS SPACED 12" O.C. GYPSUM BOARD JOINTS ORIENTED VERTICALLY, LOCATED OVER STUDS AND OFFSET BETWEEN LAYERS. GYP HELD UP FROM FLOOR MIN 1/4" TO 3/8" FOR INSTALLATION OF ACOUSTIC SEALANT - TYPICAL.
3. **CAULKING AND SEALANTS** - A BEAD OF ACOUSTICAL SEALANT APPLIED AROUND THE PARTITION PERIMETER FOR SOUND CONTROL, BOTH SIDES OF WALL.
4. **BLOCKING - (NOT SHOWN)** WOOD BLOCKING AS NEEDED
5. **TAPE AND COMPOUND - (NOT SHOWN)** VINYL, DRY OR PREMIXED JOINT COMPOUND, APPLIED IN TWO COATS TO JOINTS AND SCREW HEADS, PAPER TAPE, 2 IN. WIDE, EMBEDDED IN FIRST LAYER OF COMPOUND OVER ALL JOINTS.
6. **BASE**

W1 WALL 01A&B - NON RATED PARTITION
1 1/2" = 1'-0"