

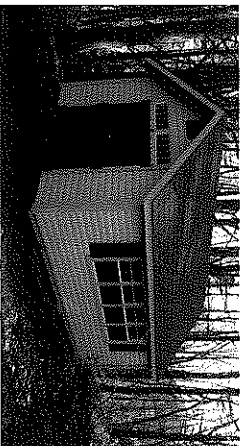


Economy A-Frame

Size	Pine	T1-11
6 x 8	1,250	1,315
6 x 10	1,410	1,480
6 x 12	1,595	1,675
8 x 8	1,490	1,560
8 x 10	1,690	1,775
8 x 12	1,895	1,990
8 x 14	2,125	2,230
8 x 16	2,355	2,465
10 x 12	2,250	2,380
10 x 14	2,520	2,655
10 x 16	2,705	2,840
12 x 14	2,935	2,080
12 x 16	3,135	3,295

ECONOMY SPECIFICATIONS

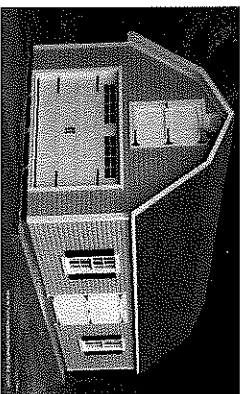
all Framing 24" on center
 Flooring 5/8" OSB
 Roof sheathing 7/16" osp
 Rolled roofing "Black"
 4" l-hinges on pine doors
 No windows
 No vents
 standard overhangs
 Door must be in Gable end
 Pine Trim



Extended Gable

Size	Pine	T1-11	SmartSide	Vinyl
8 x 12	2,631	2,763	3,098	3,313
8 x 14	2,950	3,098	3,426	3,656
8 x 16	3,263	3,426	3,944	3,944
8 x 20	4,069	4,272	4,813	4,813
10 x 12	3,125	3,281	3,889	3,889
10 x 14	3,475	3,649	4,294	4,294
10 x 16	3,756	3,944	4,613	4,613
10 x 20	4,881	5,125	5,625	5,625
12 x 14	4,075	4,279	4,856	4,856
12 x 16	4,356	4,574	5,219	5,219
12 x 20	5,513	5,788	6,438	6,438
12 x 24	6,913	7,258	7,944	7,944
14 x 16	5,719	6,005	6,531	6,531
14 x 20	7,094	7,448	8,006	8,006
14 x 24	8,513	8,938	9,631	9,631

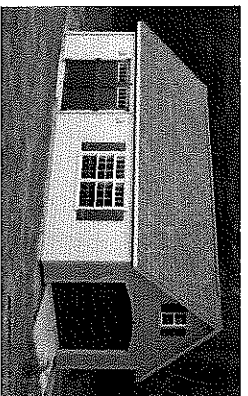
8/12 roof pitch
 6" overhangs on rakes and eaves
 trimmed windows and vents
 2 windows 18"x27"
 6" wall studs
 4" fascia and gable trim
 Shown with transoms and addl windows



2 Story Extended Gambrel

Size	Pine	SmartSide	Vinyl
12 x 16	6,534	8,208	8,070
12 x 20	8,208	9,819	9,819
12 x 24	9,287	11,021	11,021
12 x 28	11,550	13,420	13,420
14 x 16	8,760	10,320	10,320
14 x 20	9,566	11,290	11,290
14 x 24	11,779	13,860	13,860
14 x 28	13,100	14,220	14,220
16 x 20	11,540	13,040	13,040
16 x 24	13,560	15,600	15,600
16 x 28	15,680	17,900	17,900

2x4x7'4" wall studs
 extended Gambrel roof
 standard non insulated garage door
 6" overhangs on rakes and eaves
 4" fascia and gable trim
 2 windows 24"x36"
 2nd floor, 2"x6" joists with L stairs
 optional gable end door, shutters,
 carriage door



2 Story Extended Gable

Size	Pine	SmartSide	Vinyl
12 x 16	5,925	7,306	7,306
12 x 20	7,390	9,013	9,013
12 x 24	8,305	10,200	10,200
12 x 28	10,570	11,780	11,780
14 x 16	7,778	9,284	9,284
14 x 20	8,640	10,210	10,210
14 x 24	10,570	12,340	12,340
14 x 28	11,900	13,880	13,880
16 x 20	9,990	11,900	11,900
16 x 24	12,480	14,520	14,520
16 x 28	14,590	16,700	16,700

2x4x7'4" wall studs
 6" overhangs on rakes and eaves
 standard non insulated garage door
 4" fascia and gable trim
 12/12 roof pitch gable roof
 2 windows 24"x36"
 2nd floor, 2"x6" joists with L stairs
 Shown with optional transoms, arch door,
 gable window, shutters, ramp

Structurally the best shed available, Guaranteed!

Sheds are built on Pressure Treated 4"x4" skids, 6' and 8' wide shed have 2"x4" Pressure Treated floor joists 16" on center, 10' and wider sheds have 2"x6" Pressure Treated floor joists 16" on center, 3/4" LP Prostruct tongue and groove floor sheathing with SmartFinish, All framing is 16" LP Prostruct Roof sheathing with SilverTech Technology, Aluminum Drip Edge on rakes and eaves, 35 year asphalt architectural roof shingles, Standard venting (8"x8" aluminum gable vents), Sheds 8'x10' and smaller include 1 window, 8'x12' and larger include 2 windows, Sheds include 1 door (30" single, 4' or 5' double), Metal wall bracing standard in Pine Sheds

Customization of all storage buildings is available.

Supplied with rough drawings or pictures, specifications on materials and pertinent dimensions, Shed Happens will return an estimated usually within 48 hours. Most shed companies will not do custom work and (based on our purchasing power and manufacturing facility) reputable contractors can not match our prices.