

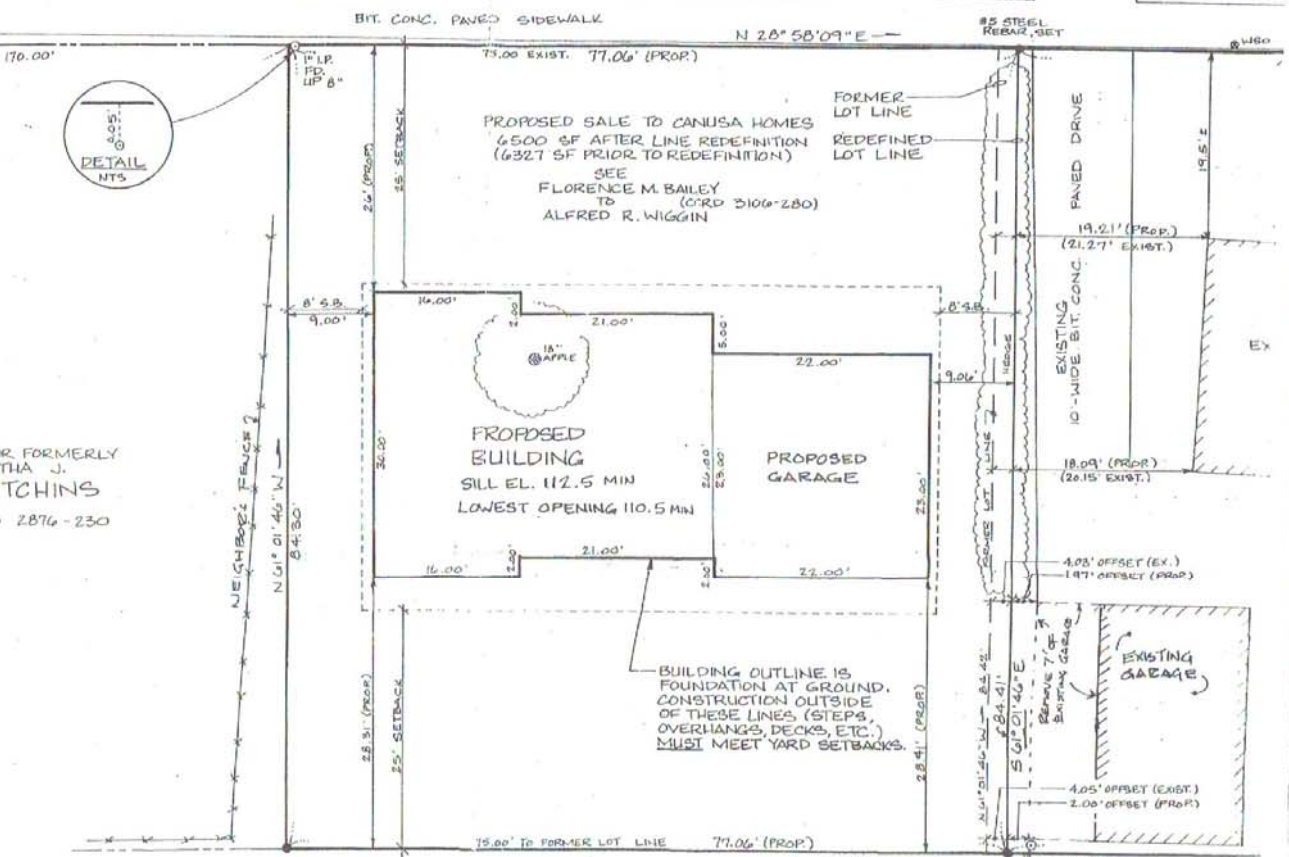
FOREST
INTOWN
AVE

CH#1

APRON

APRON

337-C-20



NOW OR FORMERLY
MARTHA J.
HUTCHINS
CORD 2876-230

PROPOSED SALE TO CANUSA HOMES
6500 SF AFTER LINE REDEFINITION
(6327 SF PRIOR TO REDEFINITION)
SEE
FLORENCE M. BAILEY
TO
ALFRED R. WIGGIN
(ORD 3106-280)

PROPOSED
BUILDING
SILL EL. 112.5 MIN
LOWEST OPENING 110.5 MIN

PROPOSED
GARAGE

BUILDING OUTLINE IS
FOUNDATION AT GROUND.
CONSTRUCTION OUTSIDE
OF THESE LINES (STEPS,
OVERHANGS, DECKS, ETC.)
MUST MEET YARD SETBACKS.

NOW OR FORMERLY
HARRISON
BUTTERWORTH
CORD 2876-230

IRON PIPE
FOUND
139' OFF LINE