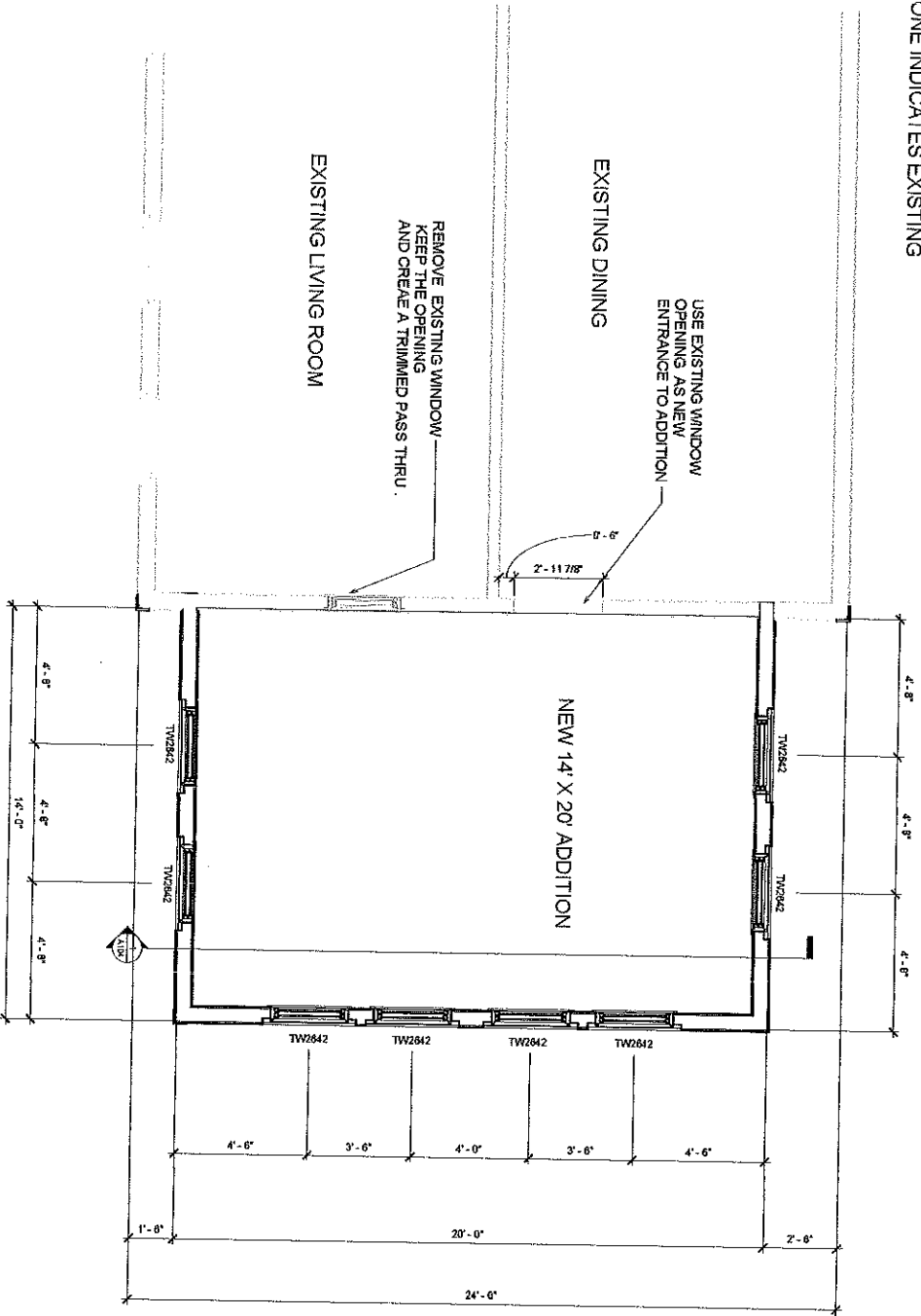


NOTES:
 1. HALFTONE INDICATES EXISTING



① FIRST FLOOR
 1/2" = 1'-0"

Manufacturer	Description	Designation	Height	Width	Rough Height	Rough Width	Mark
DELVIN	Window Schedule						
Anderson Corporation	Vinyl-clad hung window	TW2842	8'-0 1/2"	3'-0 1/2"	4'-5 3/8"	2'-8 1/8"	55
Anderson Corporation	Vinyl-clad hung window	TW2842	4'-4 7/8"	2'-7 5/8"	4'-5 3/8"	2'-8 1/8"	39
Anderson Corporation	Vinyl-clad hung window	TW2842	4'-4 7/8"	2'-7 5/8"	4'-5 3/8"	2'-8 1/8"	41
Anderson Corporation	Vinyl-clad hung window	TW2842	4'-4 7/8"	2'-7 5/8"	4'-5 3/8"	2'-8 1/8"	47
Anderson Corporation	Vinyl-clad hung window	TW2842	4'-4 7/8"	2'-7 5/8"	4'-5 3/8"	2'-8 1/8"	48
Anderson Corporation	Vinyl-clad hung window	TW2842	4'-4 7/8"	2'-7 5/8"	4'-5 3/8"	2'-8 1/8"	49
Anderson Corporation	Vinyl-clad hung window	TW2842	4'-4 7/8"	2'-7 5/8"	4'-5 3/8"	2'-8 1/8"	50
Anderson Corporation	Vinyl-clad hung window	TW2842	4'-4 7/8"	2'-7 5/8"	4'-5 3/8"	2'-8 1/8"	51

TINY HOMES OF MAINE



BASSIL/LAWRENCE
 14x20 ADDITION
 Floor Plan
 Project Number: 108716
 Date: 10/26/16
 Drawn by: TJS
 Checked by:
 A101
 Scale: 1/2" = 1'-0"