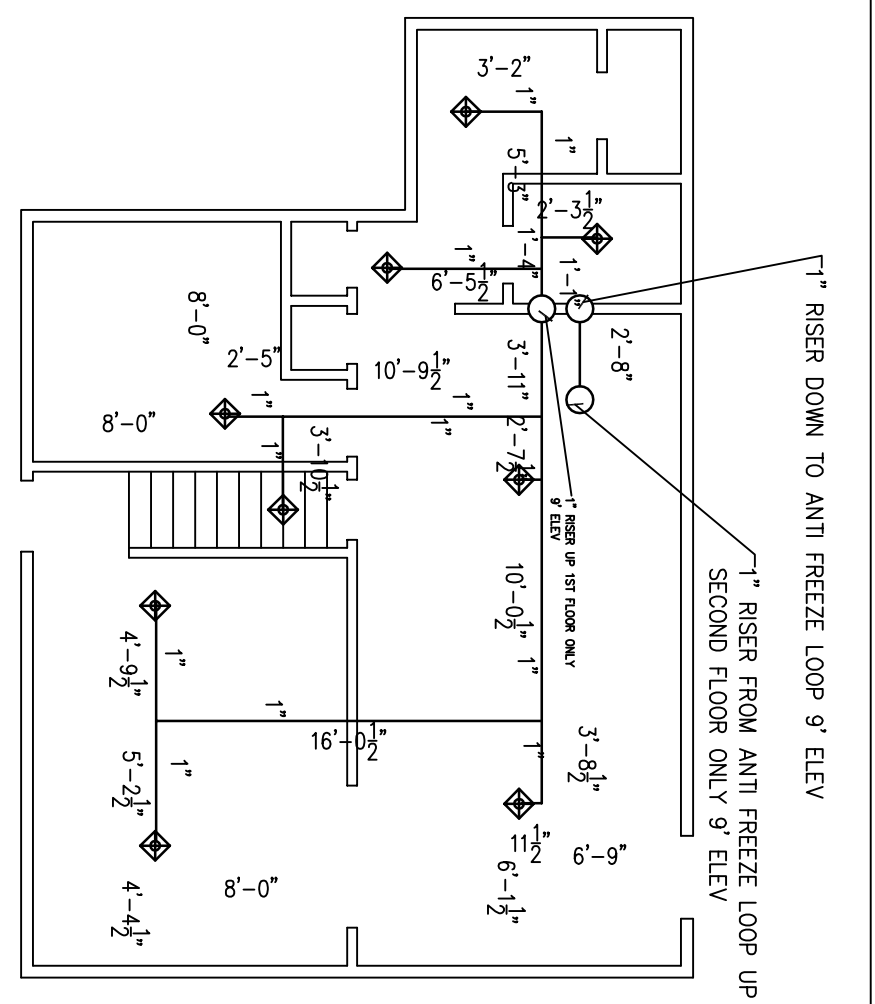


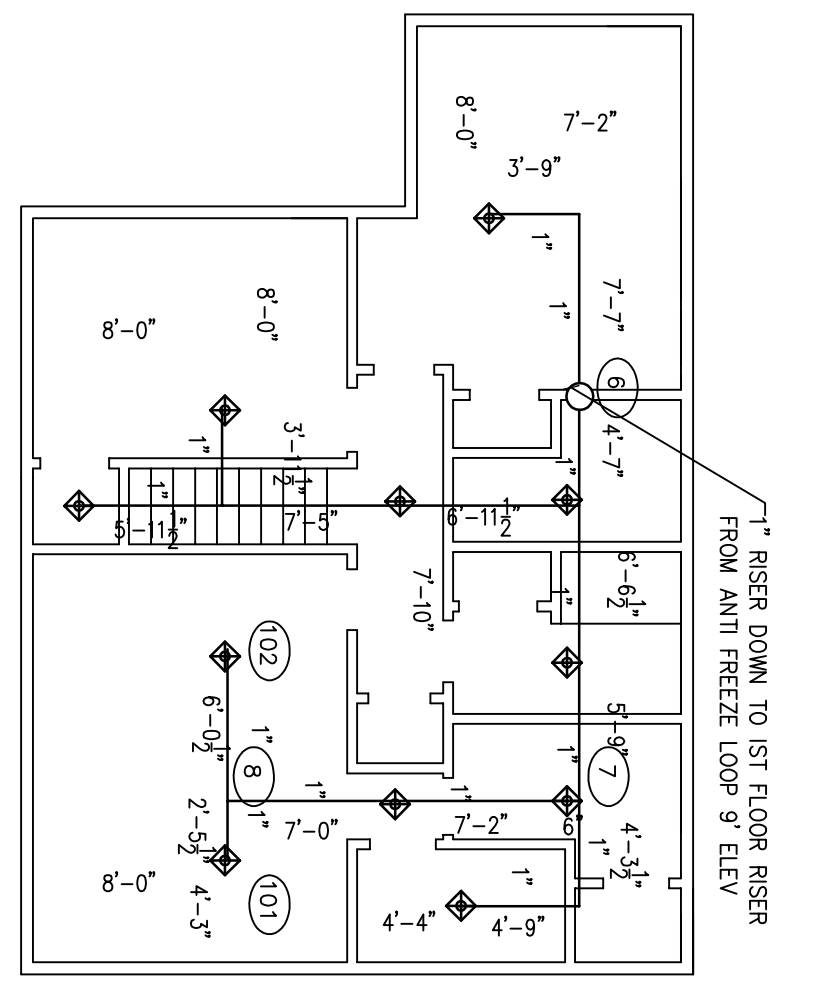
BASEMENT FLOOR 6 K= 4.9 RESIDENTIAL GB-OR 155F PENDENT SPRINKLER HEADS RFD.

SCALE: 1/8"=1'-0"



FIRST FLOOR 9 K= 4.9 RESIDENTIAL GB-OR 155F PENDENT SPRINKLER HEADS RFD.

SCALE: 1/8"=1'-0"



SECOND FLOOR 10 K= 4.9 RESIDENTIAL GB-OR 155F PENDENT SPRINKLER HEADS RFD.

SCALE: 1/8"=1'-0"

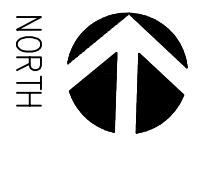
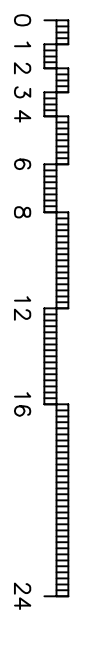
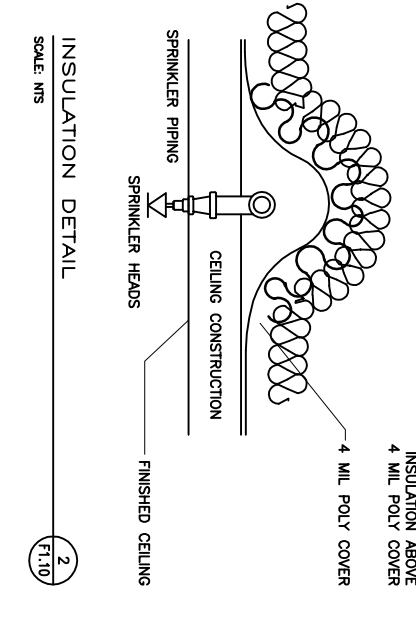
WATER PRESSURE INFORMATION SUPPLIED BY PORTLAND WATER DEPARTMENT 9-10-2012 11:00 AM

NOTE: ANTI FREEZE TO MEET THE REQUIREMENTS OF THE STATE OF MAINE PREMIXES GLYCERINE BASED ANTI-FREEZE ONLY

WATER PRESSURE INFORMATION	
STATIC	75 psi
RESIDUAL	58 psi
PITOT	n/a
COEFFICIENT OF FLOW	n/a
OUTLET FLOW	1321 gpm

NOTE APPROX. 12 GAL OF ANTI-FREEZE CAPACITY IN SYSTEM

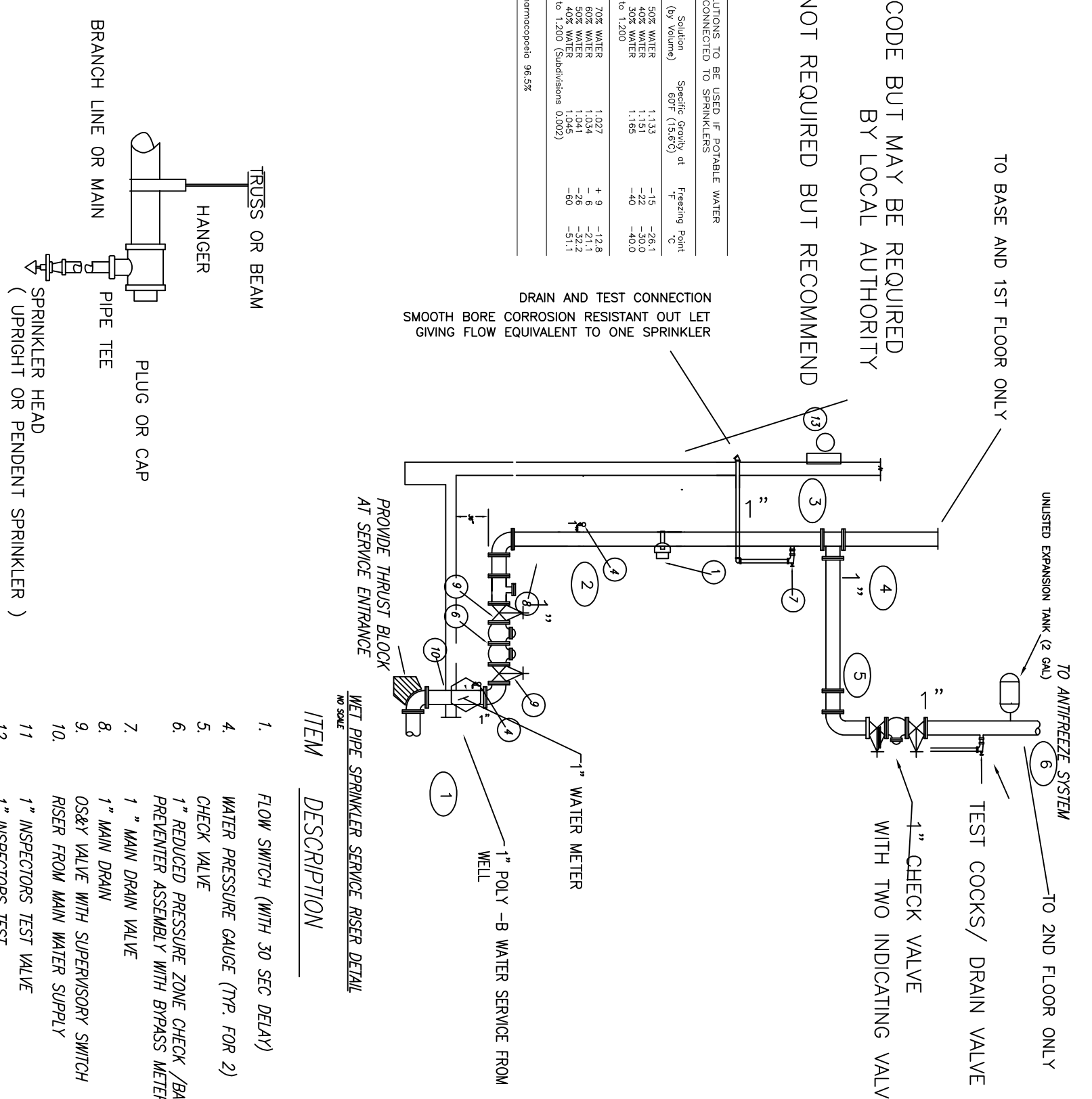
FDC NOT REQUIRED BY CODE BUT MAY BE REQUIRED BY LOCAL AUTHORITY
AUDIO DEVICE NOT REQUIRED BUT RECOMMEND



NOTES

1. SYSTEM DESIGNED TO THE REQUIREMENTS OF THE NFPA 13-2010 EDITION, STATE OF MAINE AND THE PORTLAND MAINE
2. ALL PIPING SHOULD BE ARRANGED, WHERE PRACTICABLE TO DRAIN TO THE MAIN DRAIN VALVE.
3. READILY REMOVABLE FITTINGS SHALL BE PROVIDED AT THE END OF ALL CROSS MAINS TO PROVIDE FOR FLUSHING SYSTEM.
4. HANGERS AND PIPE SHALL BE INSTALLED IN ACCORDANCE WITH THE REQUIREMENTS OF NFPA 13, 2010 EDITION.
5. ALL PIPE LOCATIONS TO BE FIELD MEASURED PRIOR TO FABRICATION AND INSTALLATION.
6. HIGH TEMPERATURE HEADS TO BE FIELD LOCATED WHERE REQUIRED.
7. SINGLE HEADS IN ROOMS WITHOUT MEASUREMENTS ARE TO BE CENTERED IN ROOM.
8. PIPE AND FITTINGS MAY BE CPVC PLASTIC OR EQUAL.
9. SPRINKLERS ARE NOT REQUIRED IN BATHROOMS NOT MORE THEN 55 SQ.FT.

Material	Standard	Weight (LBS/FT)	Typing Size
CONDENSATE	1.315	-15	-26.1
CONDENSATE	1.315	-22	-26.0
CONDENSATE	1.315	-28	-26.0
CONDENSATE	1.315	-34	-26.1
CONDENSATE	1.315	-40	-26.1
CONDENSATE	1.315	-46	-26.1



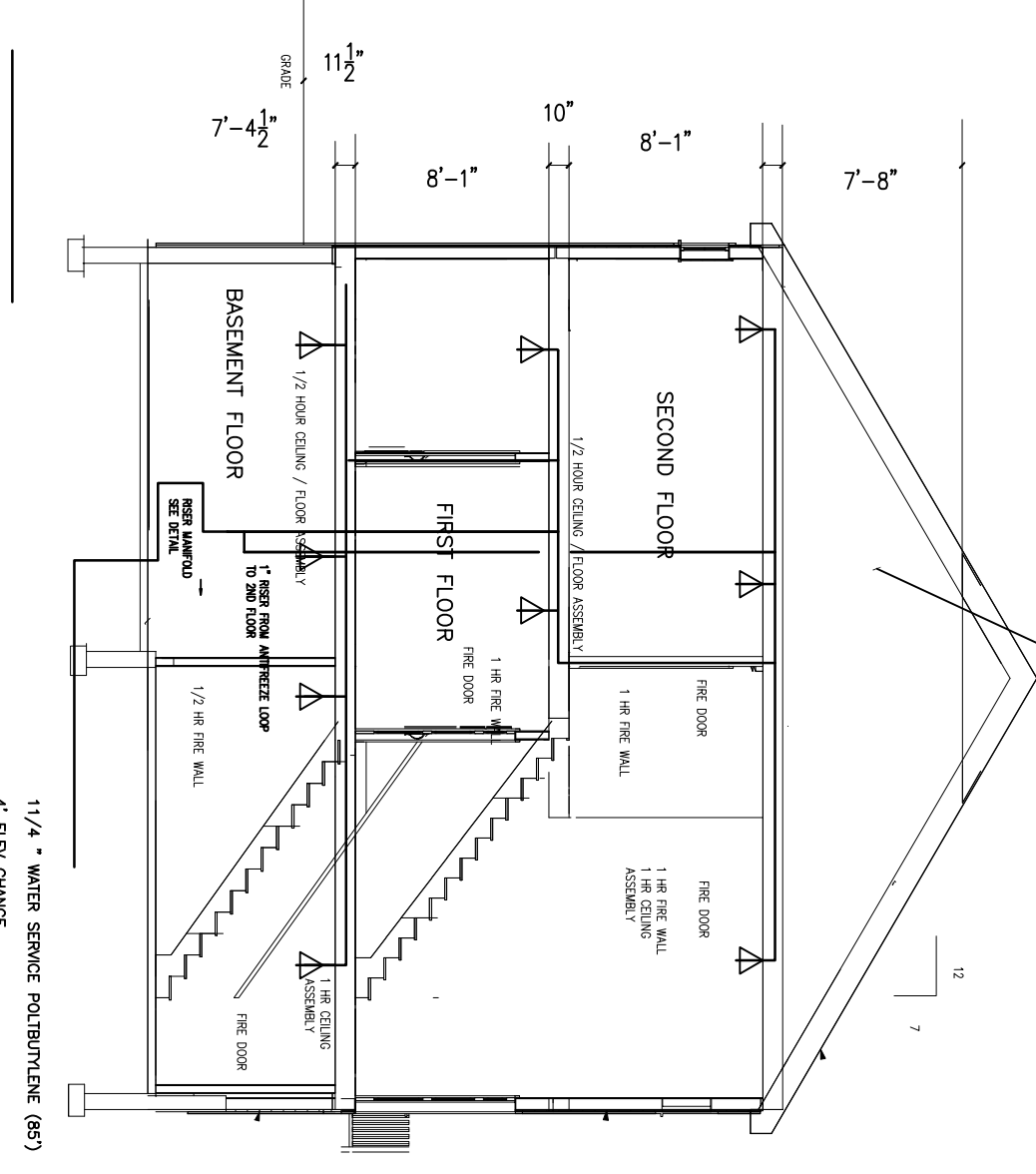
TYPICAL END FLUSHING/DRAIN DETAIL

N.T.S.

NOTE: THESE PLANS ARE INTENDED FOR SPRINKLER PURPOSES ONLY. WHERE THESE PLANS AND DRAWINGS ARE A RESULT OF RESPONSIBILITY FOR THE ACQUIRY OF THE DIMENSIONS OR MODIFICATIONS TO THE DESIGN RESULTING FROM CHANGED DIMENSIONS. IN ALL CASES, IT IS THE RESPONSIBILITY OF THE INSTALLER TO FIELD VERIFY ALL DIMENSIONS PRIOR TO INSTALLATION. THE DESIGNER SHALL NOT BE RESPONSIBLE FOR ANY DIMENSIONAL ERRORS OR OMISSIONS. WHERE THIS SYSTEM, ALANTIC DESIGN RESOURCES LTD. IS THE SOLE RESPONSIBILITY OF THE OWNER OR OWNER'S AGENT. WHERE THIS SYSTEM, IN PART OR IN WHOLE, MAY BE EXPOSED TO FREEZING TEMPERATURES, OR WHERE CHANGES IN THE FLOW PATTERN OR PIPING ALANTIC DESIGN RESOURCES LTD. TAKES NO RESPONSIBILITY FOR ANY ARCHITECTURAL DESIGN, INCLUDING DESIGN RELATING TO HEAT DISTRIBUTION OR RETENTION. IT IS THE OWNER'S RESPONSIBILITY TO PROVIDE HEAT WHERE HEAT IS REQUIRED. FROM FREEZING OR CONDENSATION.

NOTE: CPVC PLASTIC TO BE INSTALLED PER LISTING REQUIREMENTS SEE CUT SHEET
NOTE: ANTI-FREEZE TO BE INSTALLED PER LISTING REQUIREMENTS SEE CUT SHEET
50% PREMIXED GLYCERINE BASED ANTI-FREEZE ONLY PER STATE OF MAINE 2ND FLOOR ONLY

SECTION SCALE: 1/8"=1'-0"



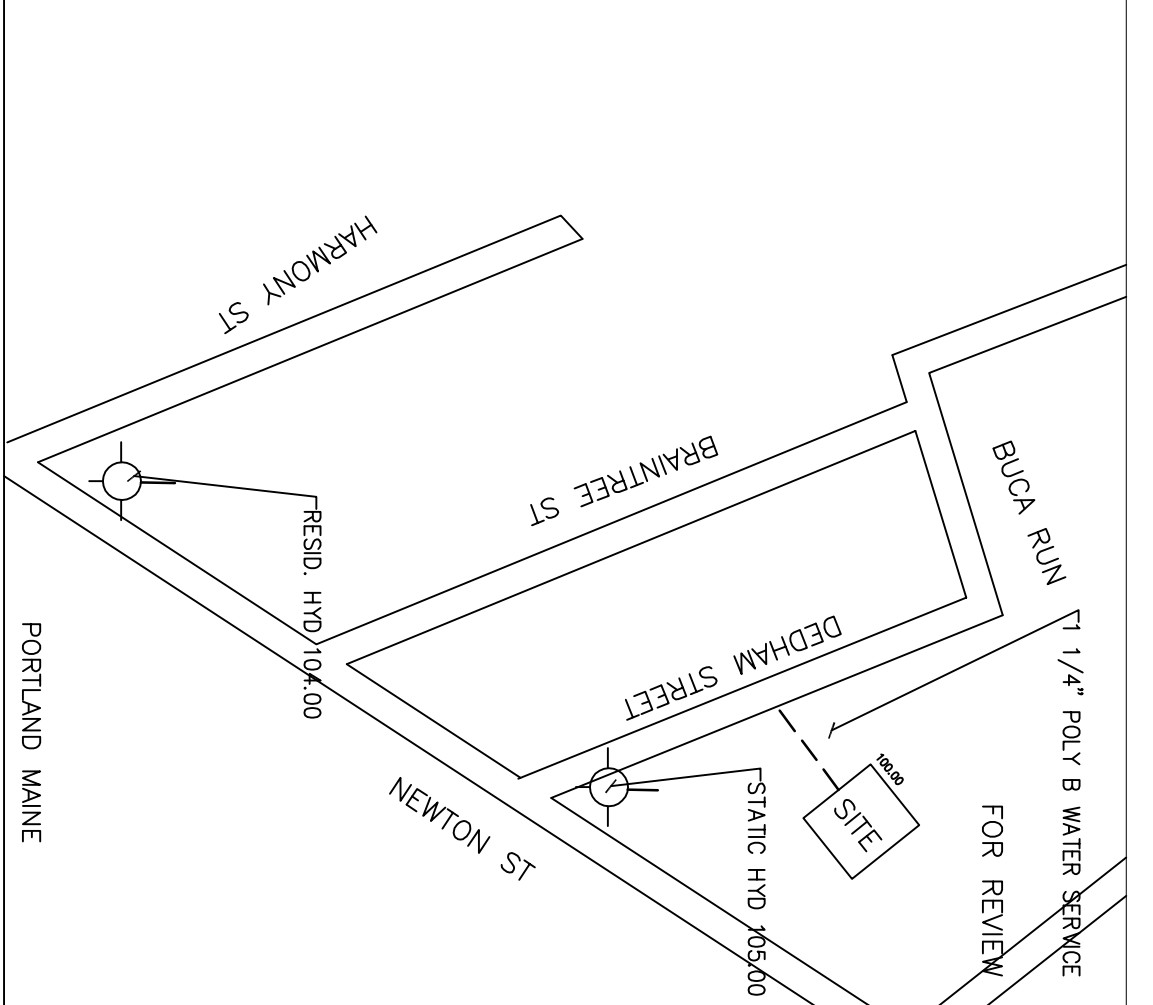
SECTION SCALE: 1/8"=1'-0"

HYDRAULIC CALCULATIONS

HYDRAULIC CALCULATIONS FOR
LOT# C DEDHAM STREET
CONTRACT NO. 212076
10-14-2012
DESIGN DATA
OCCUPANCY CLASSIFICATION: RESIDENTIAL
DESIGNER APPLICATION: SEE HEAD LISTING
COVERED PER SPRINKLER: 256 SQ.FT. MAX
SPECIAL SPRINKLERS CALCULATED: RESIDENTIAL
IN BACK DEMAND: -0-
HOSE STREAM REQUIRED: -0-
FLOW (GPM) REQUIRED: 2631
NAME OF CONTRACTOR: TIM DAVIS
NAME OF DESIGNER: ATLANTIC DESIGN RESOURCES LTD
ADDRESS: P.O. BOX 496
GREENLAND, NH 03840
AUTHORITY HAVING JURISDICTION: STATE OF MAINE/PORTLAND MAINE
SAMPLE NAME/PLATE
THIS SYSTEM, AS SHOWN, ON ATLANTIC DESIGN RESOURCES LTD
FORM NO. 2 (07/05-07/11) DATED 10-14-2012 159K
PORTLAND MAINE
10-14-2012
LOT# C DEDHAM STREET
CONTRACT NO. 212076
TEST # 1
IS DESIGNED TO DISCHARGE AT THE RATE OF 13 GPM PER HEAD OVER A MAXIMUM AREA OF 2 HEADS FLOWING WHEN SUPPLIED WITH WATER AT THE RATE OF 26.11 GPM AT 45.02 PSI AT THE BASE OF THE RISER.
HOSE STREAM ALLOWANCE OF -0- GPM IS INCLUDED IN THE ABOVE.

Nominal Pipe Size (in.)	1-1/4	1-1/2	2	2-1/2	3	3-1/2	4	5	6	8
Steel Pipe	NA	12.0	15.0	15.0	15.0	15.0	15.0	15.0	15.0	15.0
Thermostad	NA	12.0	15.0	15.0	15.0	15.0	15.0	15.0	15.0	15.0
Steel Pipe	NA	12.0	15.0	15.0	15.0	15.0	15.0	15.0	15.0	15.0
Copper Tube	8.0	8.0	8.0	8.0	8.0	8.0	8.0	8.0	8.0	8.0
Polystyrene	NA	5.0	5.0	5.0	5.0	5.0	5.0	5.0	5.0	5.0
Polystyrene (CS)	2.11	2.4	2.11	4.3	5.5	NA	NA	NA	NA	NA

- LEGEND
- RESIDENTIAL PENDENT SPRINKLER HEAD
 - PENDENT SPRINKLER HEAD (VIEWED IN SECTION)
 - NEW SPRINKLER PIPING
 - RISER UP OR DOWN
 - HANGERS
 - HYDRAULIC REFERENCE POINT



Revisions:	No	Date	By	Description

Scale:	AS NOTED
Drawn By:	RM / MO
Checked By:	RM
Approved By:	
Project No.:	212076
Issued:	FOR REVIEW
Plot Date:	SEE HEADER
File:	212076 FP-1
Dwg No.:	

LOT# C DEDHAM STREET
PORTLAND MAINE

TIM DAVIS P & H INC
P.O. BOX 255
ALFRED 04002

ATLANTIC DESIGN RESOURCES, LLC
P.O. BOX 496 / GREENLAND NH 03840
603.418.0764 voice / 603.418.6375 fax
asdrnh@gmail.com

FP-1