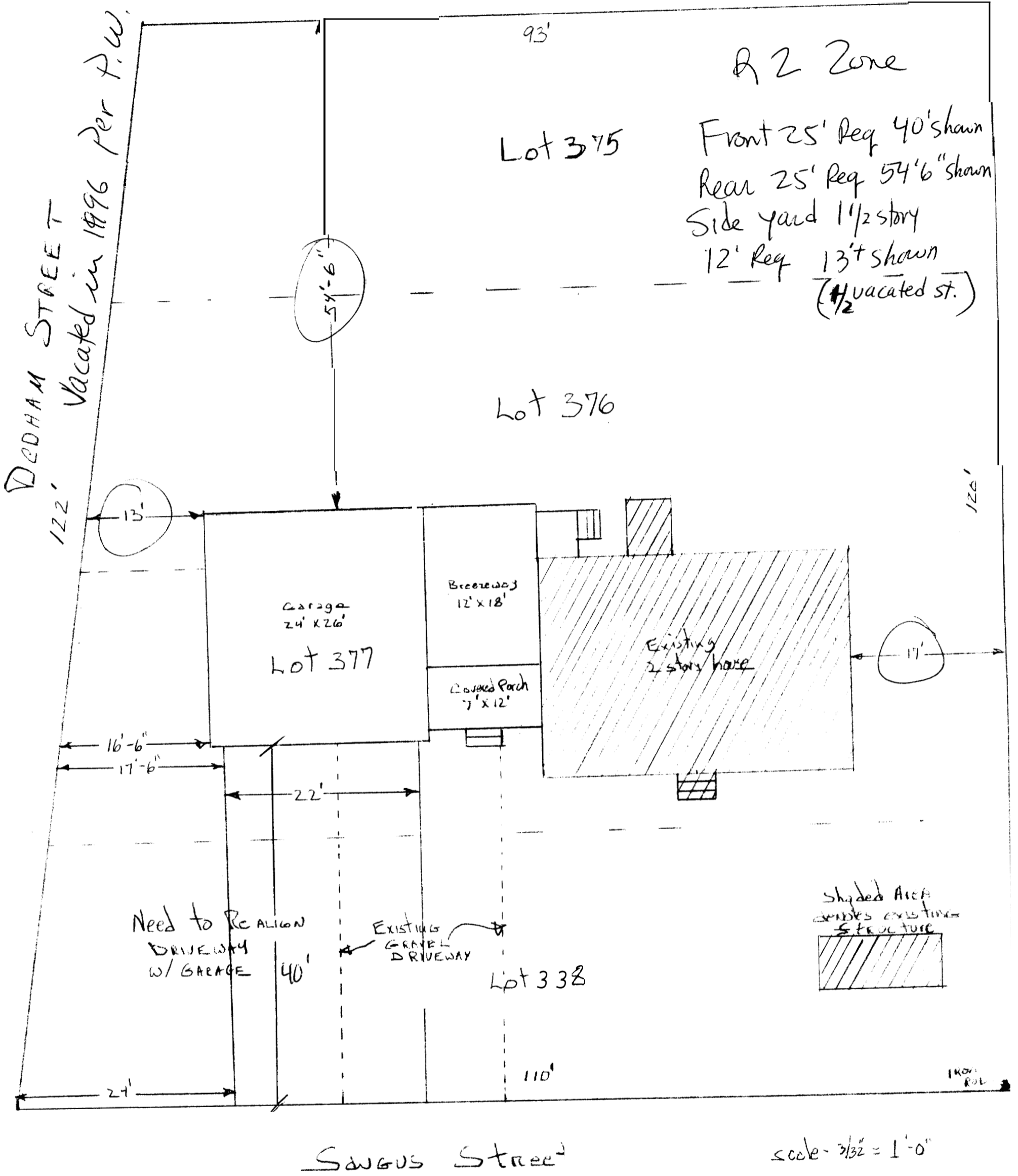


#12 SAUGUS
VERVILLE PROPERTY



R2 Zone

Front 25' Req 40' shown
Rear 25' Req 54'6" shown
Side yard 1 1/2 story
12' Req 13' shown
(1/2 vacated st.)

54'-6"

13'

17'

126'

16'-6"

17'-6"

22'

24'

40'

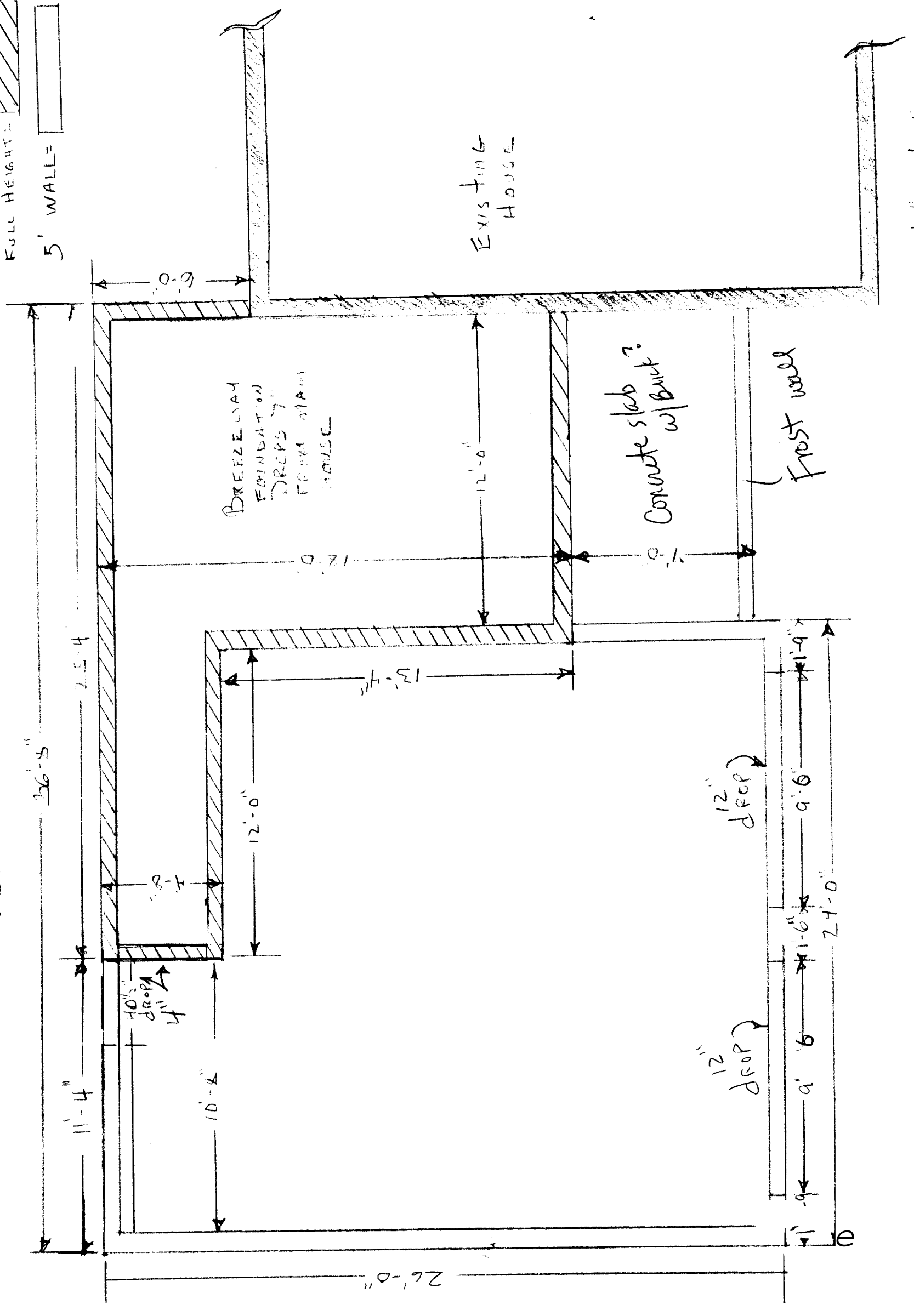
110'

1100' Pol

LEGEND

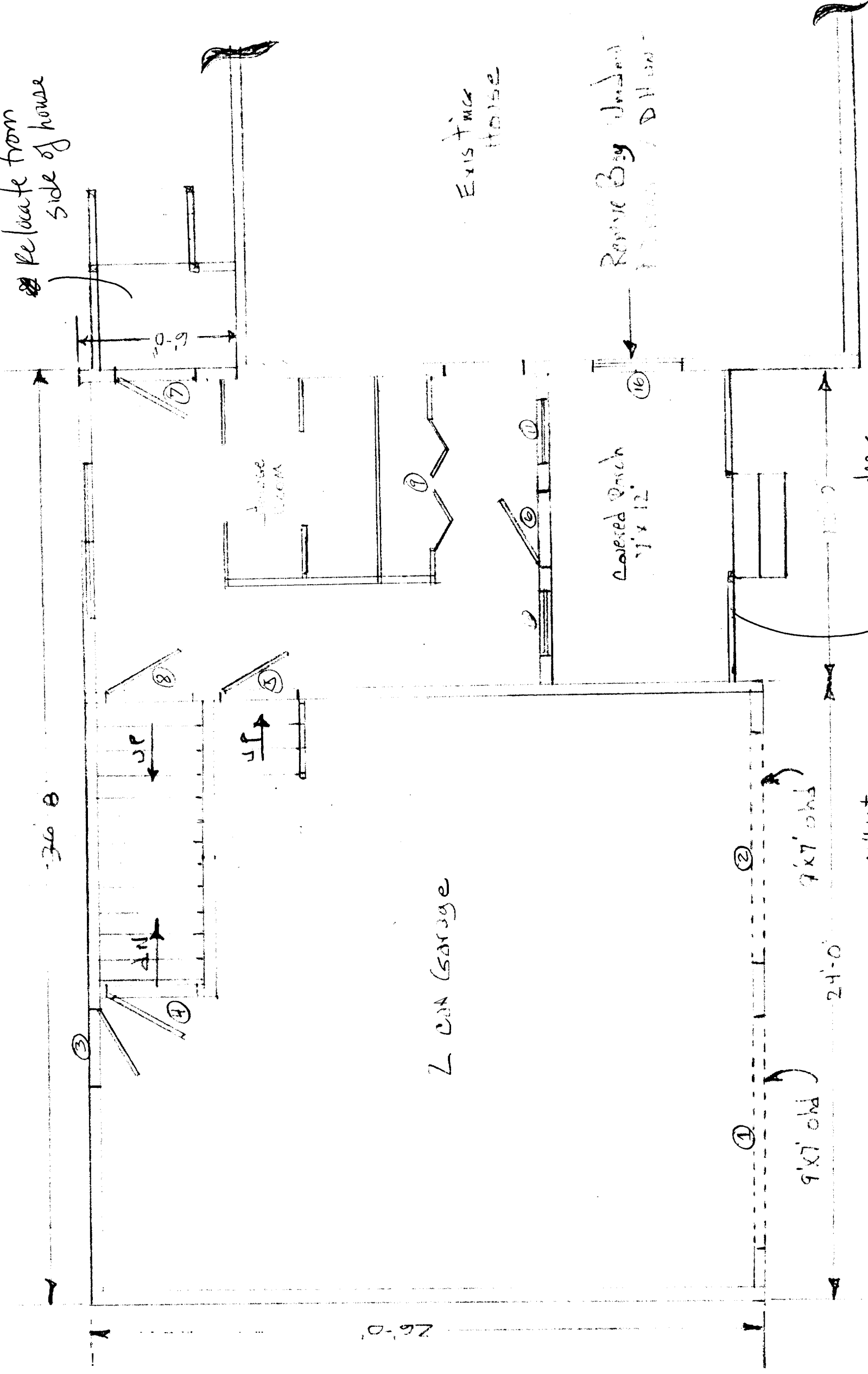
- EXISTING = [diagonal hatching]
- FULL HEIGHT = [diagonal hatching]
- 5' WALL = [white box]

VERVILLE FOUNDATION PLAN



SCALE 1/4" = 1'-0"

Existing per Dan-A
Relocate from side of house



2 car garage

EXISTING HOUSE

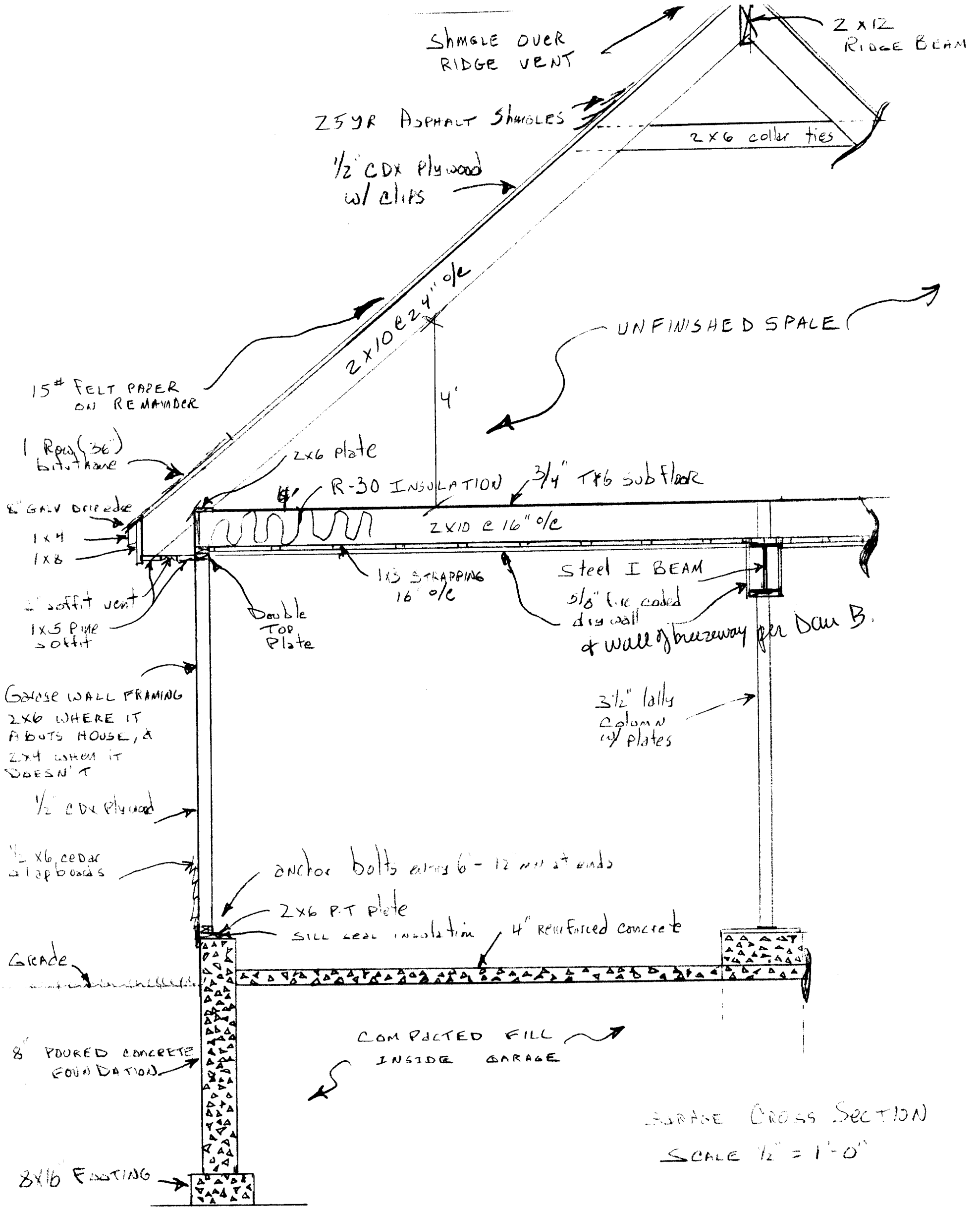
REMOVE Bay Window
16' x 12' DRIVWAY

SCALE 1/4" = 1'-0"

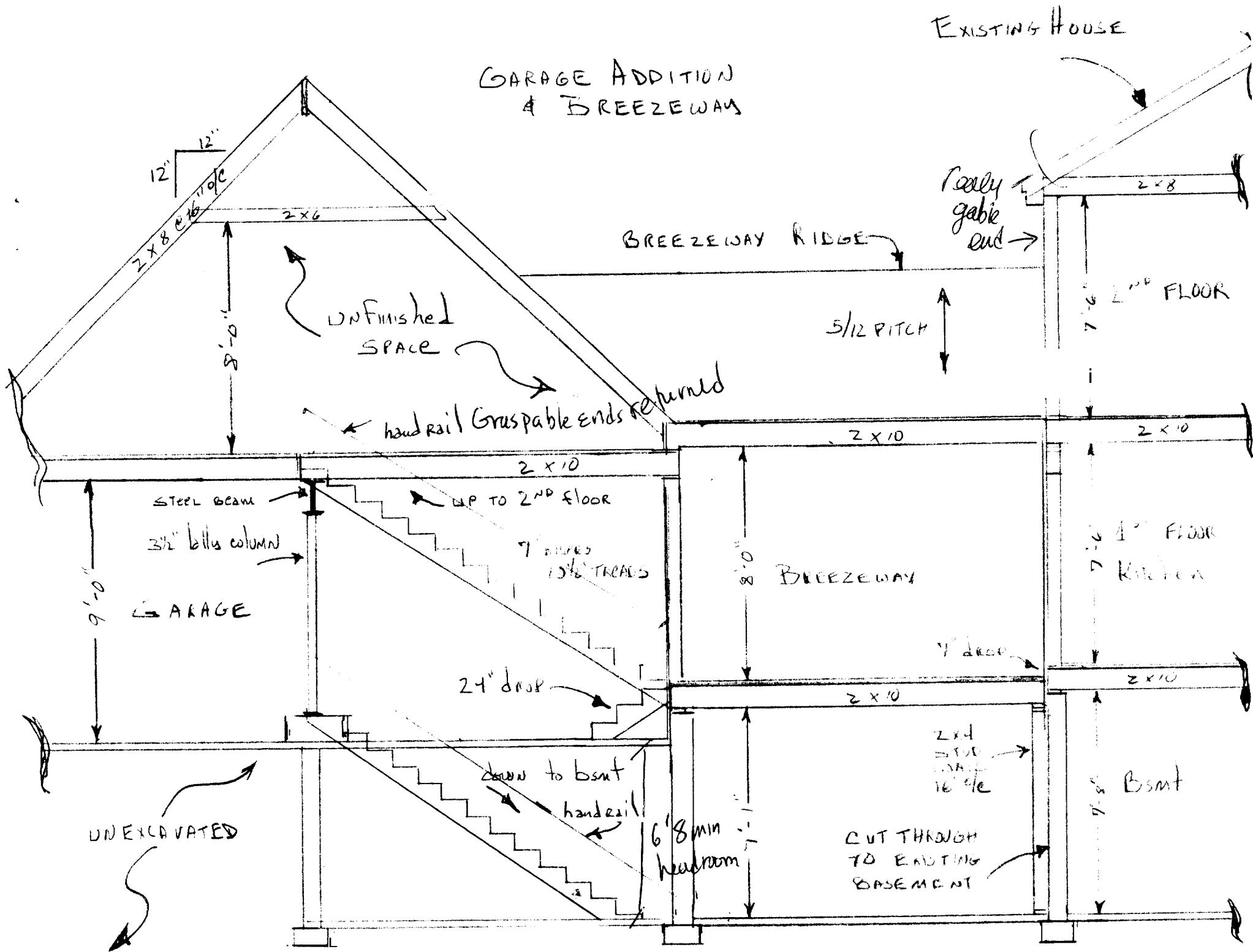
2-2x8 header
w/ 2 posts

10" net

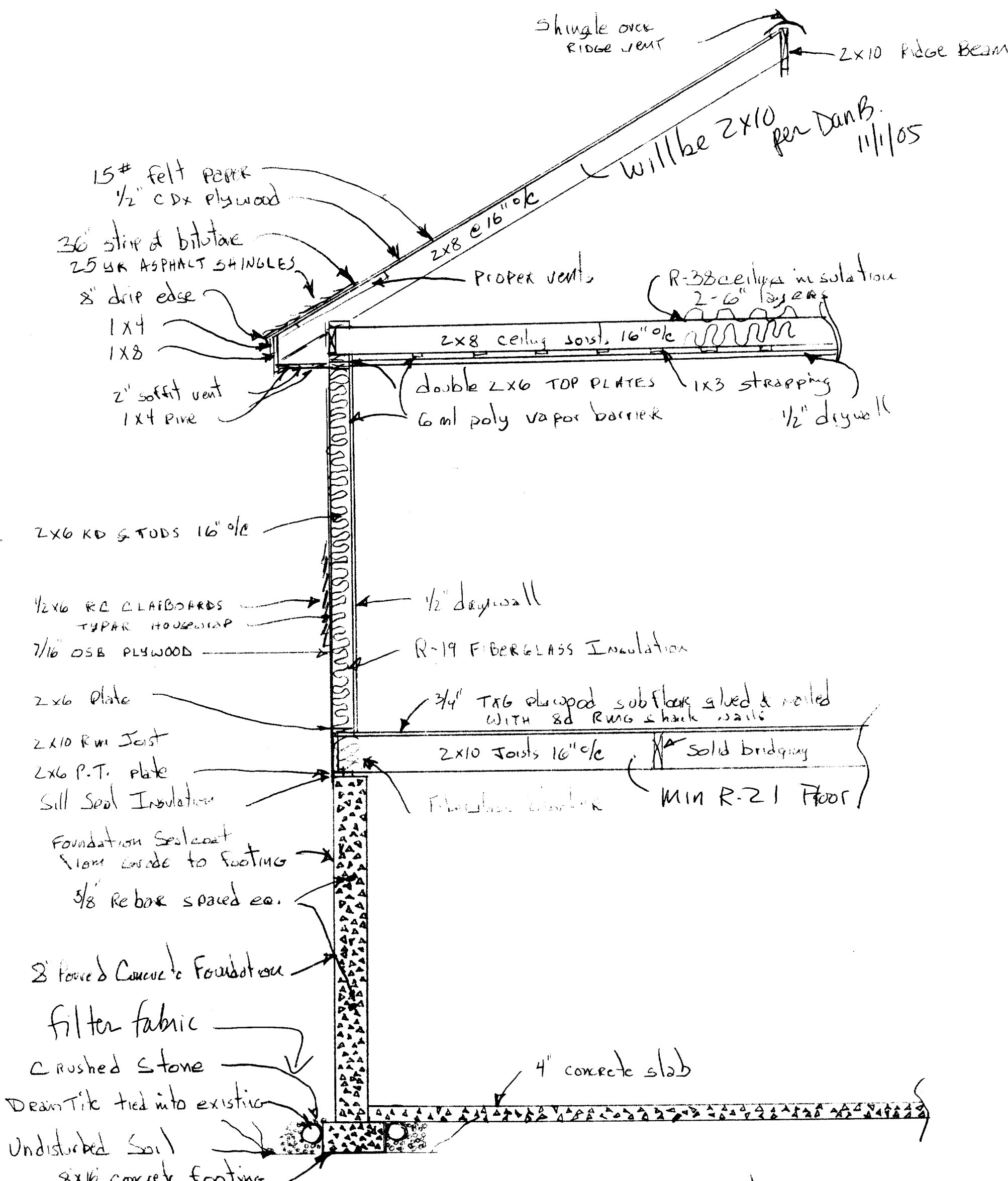
7 3/4



31" drop from kitchen floor to driveway grade.



SCALE 1/4" = 18"



Breezeway Cross Section
 Scale - 1/2" = 1'-0"

Window & Door Schedule

VERVILLE JOB

#	LOCATION	TYPE
1	Garage Front	9x7 overhead door
2	Garage Front	9x7 overhead door
3	Garage Rear	2'-8" x 6'-8" 4 lite steel door
4	Garage to basement	2'-8" x 6'-8" fire rated steel door
5	Garage to breezeway	2'-8" x 6'-8" fire rated steel door
6	Breezeway Front	2'-8" x 6'-8" 15 lite steel door
7	Breezeway Rear	2'-8" x 6'-8" 15 lite steel door
8	Overlook to stormwell to 2 nd	2'-8" x 6'-8" solid core Masonite door
9	Breezeway closet	5'-0" x 6'-8" hollow core Masonite built in door
10	Breezeway Front	3041 DH VINYL WINDOW
11	Breezeway Front	3041 DH VINYL WINDOW
12	Breezeway Rear	3644 DH Mullion VINYL WINDOW
13	^{12" x 30"} Room above Garage Front	2852/3652/2852 Triple Mullion DH WITH 1/2 ROUND OVER CENTER JAMB
14	Room above Garage Rear	3252 DH Mullion Vinyl Window
15	Breezeway Basement	12' x 30' cast in place concrete floor
16	Dining Room (side)	3652 DH VINYL WINDOW