

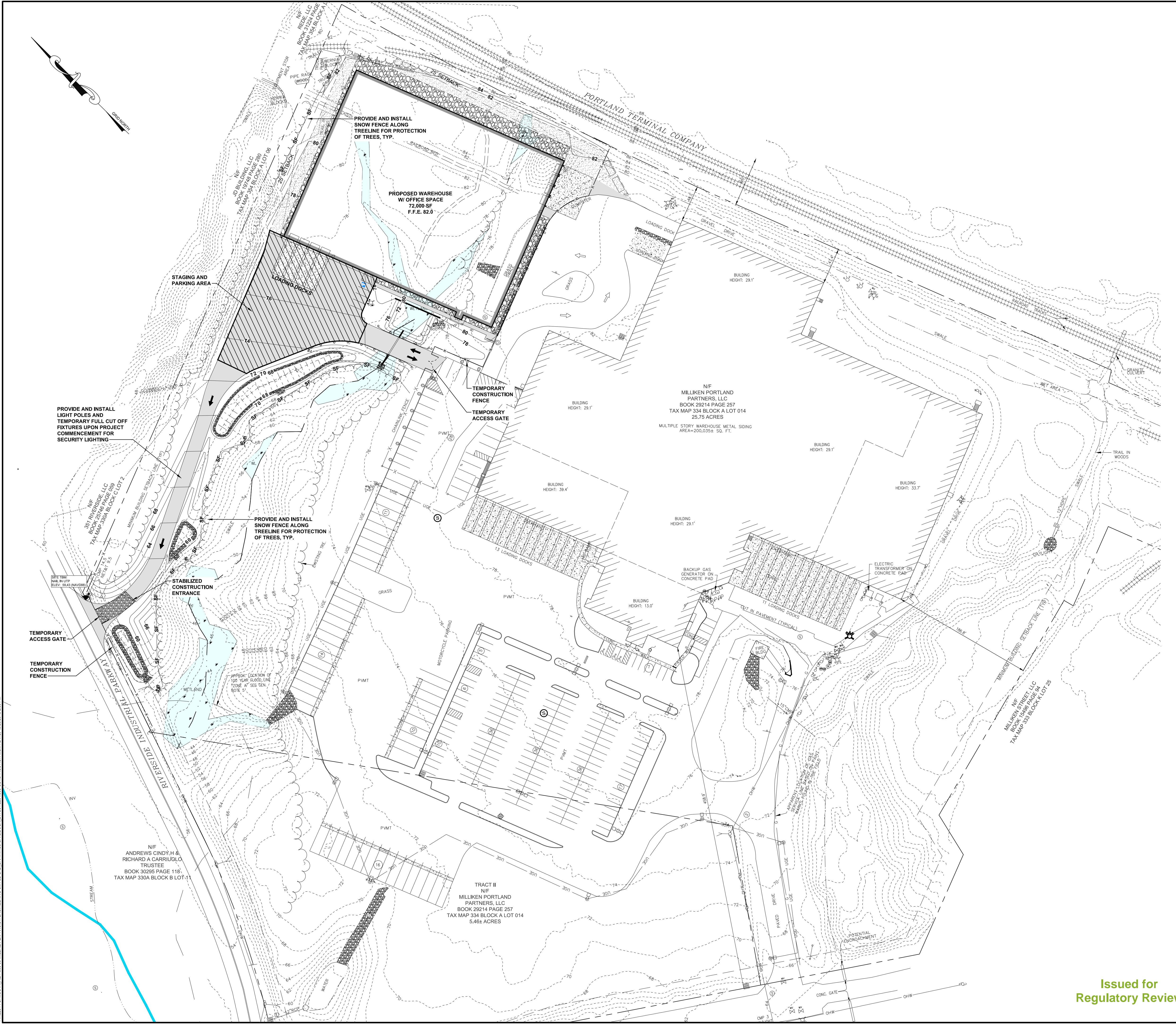
LEGEND:

DESCRIPTION	EXISTING	PROPOSED
UTILITY POLE		
POWER BANK		NA
SITE LIGHT		NA
DRAINAGE MANHOLE		
CATCH BASIN		
HYDRANT	NA	
PROPERTY LINE	---	---
EDGE OF PAVEMENT	---	---
EDGE OF GRAVEL	---	---
MAJOR FOOT CONTOUR	--- 100 ---	--- 100 ---
MINOR FOOT CONTOUR	--- 98 ---	--- 98 ---
WATER LINE	WL	W
SANITARY SEWER LINE	SS	SS
OVERHEAD UTILITY	OHD	NA
UNDERGROUND UTILITY	NA	UGU
STORMDRAIN	SD	SD
UNDERDRAIN	UD	UD
ROOF DRAIN	RD	RD
SILT FENCE	NA	
GRAVEL SURFACE	NA	
PAVED SURFACE	NA	

- GENERAL NOTES**
- TOPOGRAPHY SHOWN REPRESENTS RESULTS FROM TOPOGRAPHIC SURVEY PERFORMED BY CES, INC. ON AUGUST 23, 2018 AND MERGED WITH 2' LIDAR CONTOURS PROVIDED BY THE MAINE OFFICE OF GIS.
 - EXISTING CONDITIONS FROM DIGITAL RECORD DRAWING PROVIDED BY THE OWNER, FILE NAME MillikenSt_Base.dwg.
 - THE DIRECTION OF LINES AND UNDERLYING COORDINATE SYSTEM IS MAINE STATE PLANE WEST ZONE, US SURVEY FOOT, NAD 83, WITH NAVD 88.
 - WETLAND BOUNDARY SHOWN IS THE RESULT OF A WETLAND DELINEATION PERFORMED BY CES, INC.

- PLAN REFERENCE**
- PLAN ENTITLED "ALTA/ACSM LAND TITLE SURVEY OF PROPERTY LOCATION ON #56 MILLIKEN STREET, PORTLAND, ME PREPARED FOR PLYMOUTH INDUSTRIAL REIT, INC., 260 FRANKLIN STREET, 19TH FLOOR, BOSTON, MA 02110", PREPARED BY SGC ENGINEERING, LLC, PLAN REVISION DATE 11-20-2014.

- CONSTRUCTION NOTES**
- INSTALL EROSION CONTROL MEASURES PRIOR TO EARTH DISTURBANCE OPERATIONS.
 - CONTRACTOR SHALL PRESERVE AND PROTECT EXISTING TREES NOT DESIGNATED FOR REMOVAL. ANY EXCESS TREE REMOVAL SHALL BE REMEDIATED AT THE CONTRACTOR'S OWN EXPENSE.
 - CONTRACTOR SHALL COMPLY WITH TERMS AND CONDITIONS OF THE CITY OF PORTLAND APPROVAL, CITY OF PORTLAND CODES AND ORDINANCES, AND APPLICABLE STATE AND FEDERAL REGULATIONS.



Wharville
44 Main Street
Presque Isle, ME
F. 207-580-2302
F. 207-794-8412
F. 207-666-6264

Brewer
465 South Main Street
Presque Isle, ME
F. 207-589-4824
F. 207-669-4681
F. 207-666-6264

LeWiston
1365 State Hwy 102
LeWiston, ME
F. 207-255-5270
F. 207-255-5587

CES INC
Engineers • Environmental Scientists • Surveyors

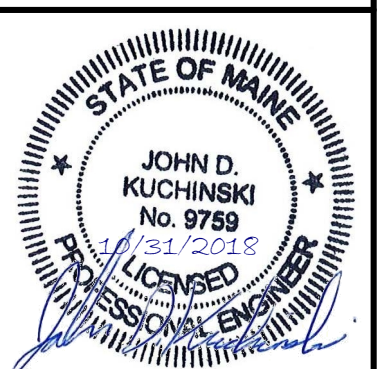
PROJECT TITLE
PLYMOUTH INDUSTRIAL REIT, INC. SITE EXPANSION PROJECT

SHEET #
56 MILLIKEN STREET

CONSTRUCTION MANAGEMENT SITE PLAN

NO.	DATE	BY	REVISION

NOT FOR CONSTRUCTION



CONSTRUCTION MANAGEMENT SITE PLAN

GRAPHIC SCALE

SCALE 1"=60'

DATE 2018-10-26

DRAWN BY BLO CHECKED BY JDK

DESIGNED BY BLO APPROVED BY SMT

JOB NUMBER 12254 003

DRAWING NUMBER **C801**

Issued for Regulatory Review

P:\2018\10\26\12254\12254-003-CONSTRUCTION.MXD 10/26/2018 3:55 PM