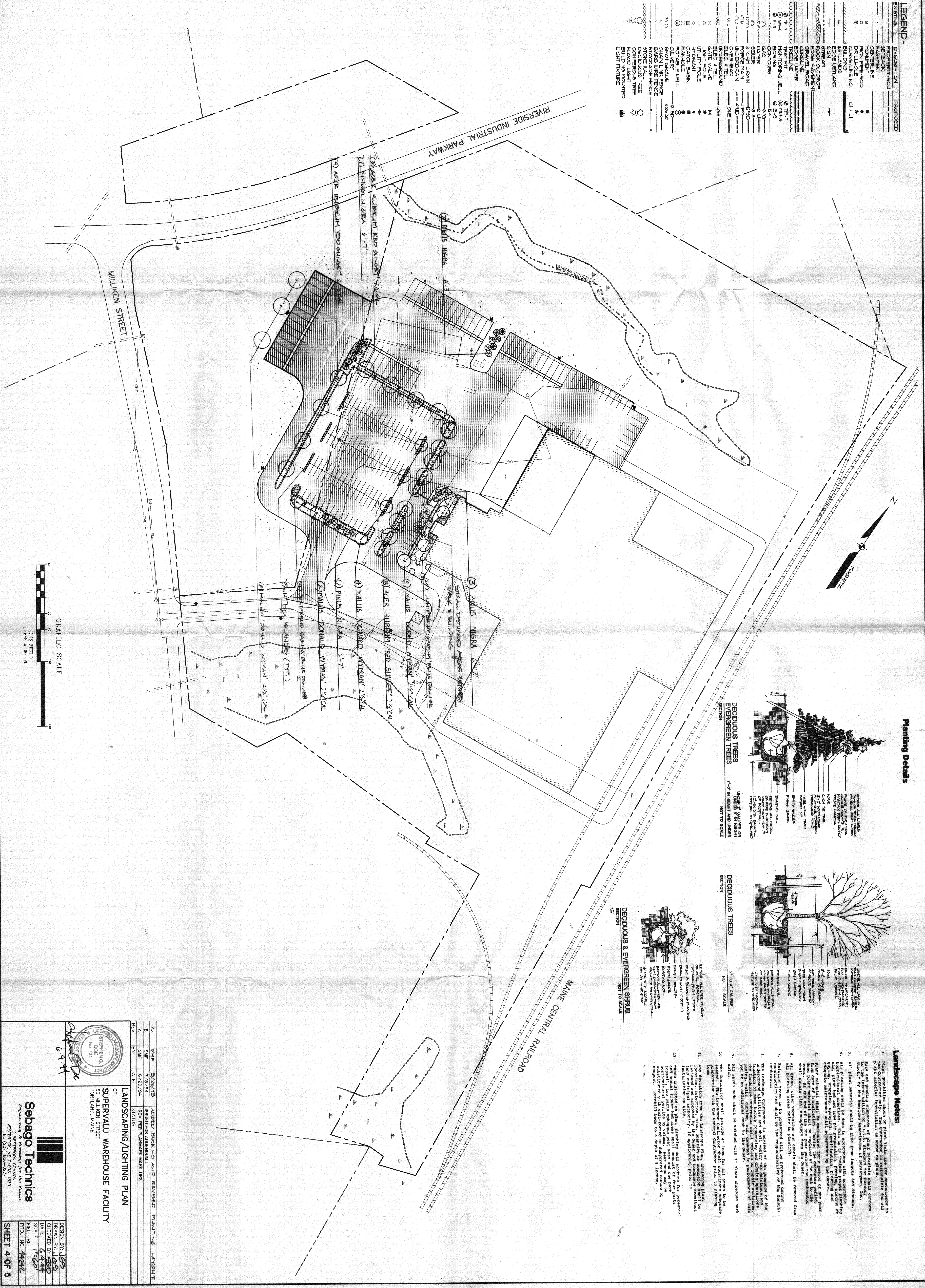
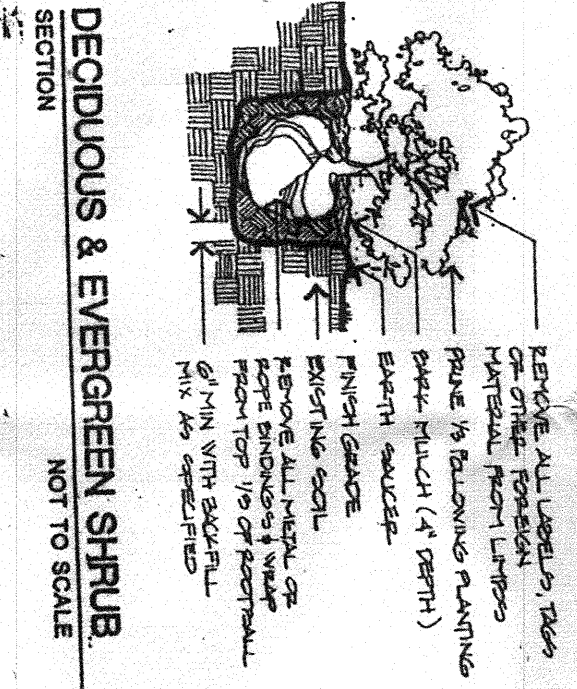
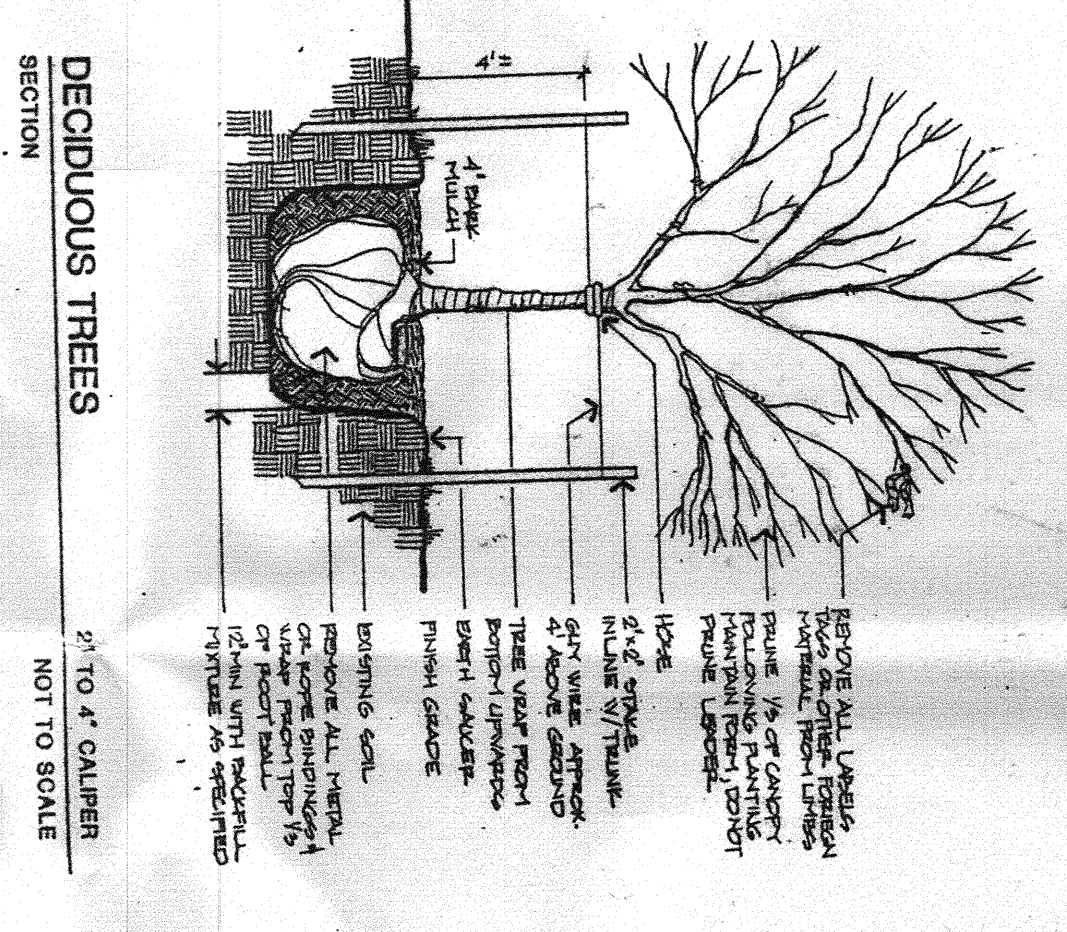
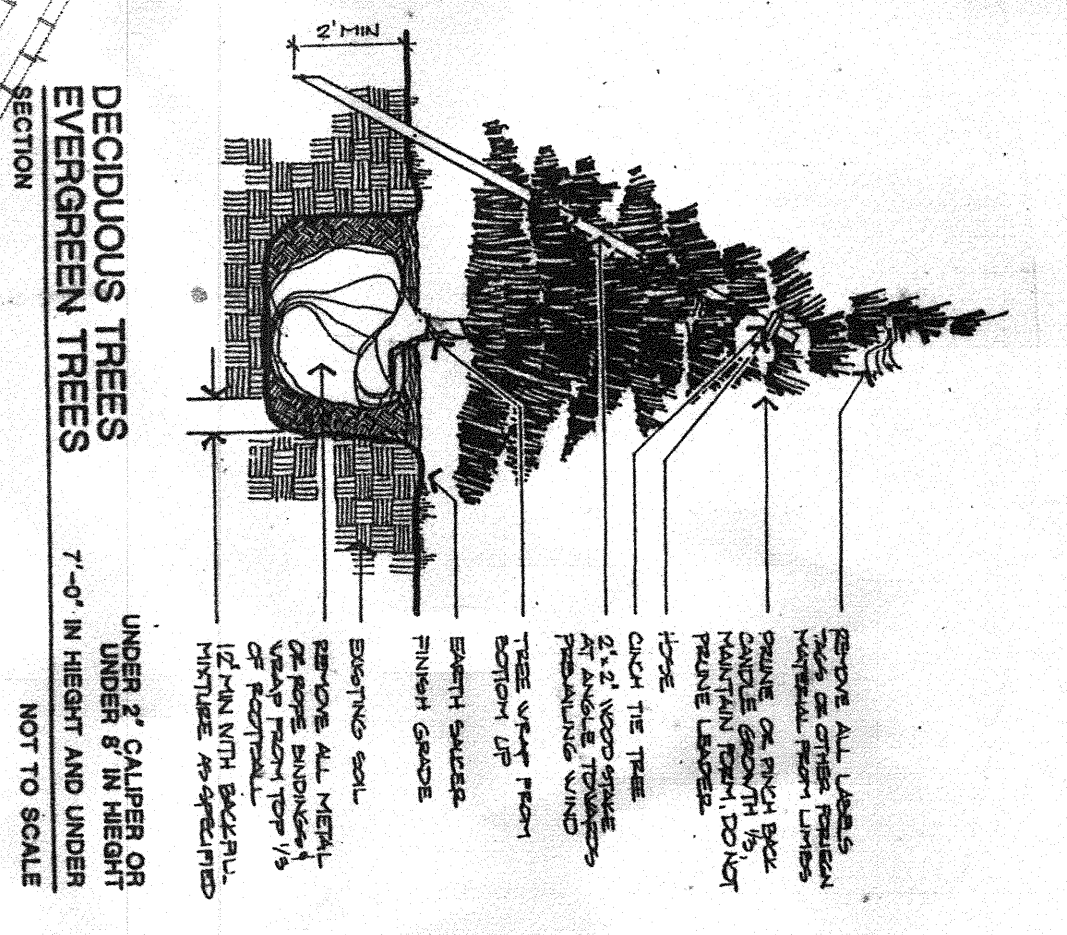


**LEGEND**

EXISTING	DESCRIPTION	PROPOSED
	PROPERTY ROW	
	SETBACK	
	GAS LINE	
	SEWER LINE	
	ELECTRIC LINE	
	TELEPHONE LINE	
	WATER MAIN	
	STORM DRAIN	
	UNDERGROUND	
	EJECT WELL	
	UNDERGROUND	
	EJECT WELL	
	LIGHT POLE	
	UTILITY POLE	
	STREET LIGHT	
	MANHOLE	
	PORTABLE WELL	
	CHAIN LINK FENCE	
	STONE WALL FENCE	
	DECIDUOUS TREE	
	EVERGREEN TREE	
	BUILDING MOUNTED LIGHT FIXTURE	

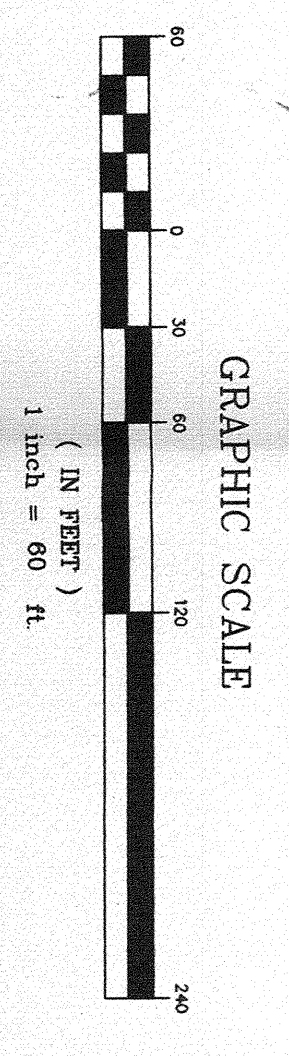


**Planting Details**



**Landscape Notes**

1. Plant quantities shown on this plan are for general reference only. The contractor shall verify quantities and plant material installation as shown on plans.
2. All plant material shall be free from insects and diseases.
3. All plant material shall be delivered to the site in accordance with acceptable horticultural practices. This is to include proper storage, watering, and protection from frost and wind damage.
4. Plant material shall be guaranteed for a period of one year from the date of installation. The contractor shall be responsible for the maintenance of the plant material during this period.
5. All planting areas shall be prepared and graded prior to planting.
6. All planting areas shall be prepared and graded prior to planting.
7. Retaining trees to be preserved will be prepared and graded prior to planting.
8. The landscape contractor is advised of the presence of the underground utility lines as shown on the site plan. The contractor shall be responsible for the protection of these lines.
9. All shrub beds shall be mulched with 3" clean shredded bark mulch.
10. The contractor shall provide a 3" clean shredded bark mulch for all shrub beds.
11. Any deviation from the landscape plan, including plant species, quantity, size, quantity or condition shall be noted and approved by the architect prior to installation on site.
12. All plants shall be installed in accordance with the landscape plan. The contractor shall be responsible for the maintenance of the plant material during this period.
13. All plants shall be installed in accordance with the landscape plan. The contractor shall be responsible for the maintenance of the plant material during this period.



DATE	5/29/95	ASPECT PACKING AND REVISED PLANTING LAYOUT
BY	SMF	ISSUED FOR ADDENDUM
DATE	7/6/94	REV PER PLANNING MARK-UPS
BY	SMF	STATUS

**LANDSCAPING/LIGHTING PLAN**  
 OF  
**SUPERVALU WAREHOUSE FACILITY**  
 56 MILIKEN STREET  
 PORTLAND, MAINE

Design By: **SMF**  
 Drawn By: **SMF**  
 Checked By: **SMF**  
 Scale: **1/8" = 1'-0"**  
 Field Bk.: **44242**  
 Proj. No.: **44242**

**Sebago Technics**  
 12 WESTBROOK COMMON  
 WESTBROOK, ME 04093-1319  
 TEL (207) 888-0277

**SHEET 4 OF 5**