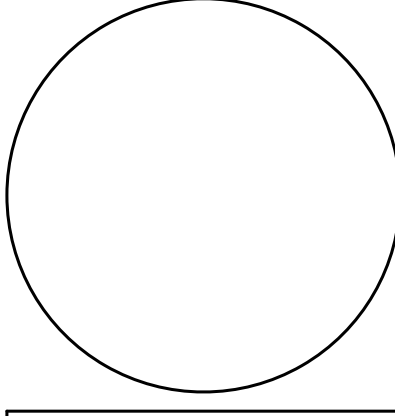




COPYRIGHT  
REPRODUCTION OR MISUSE OF  
THIS DOCUMENT WITHOUT  
WRITTEN PERMISSION FROM  
GRANT HAYS ASSOCIATES IS  
PROHIBITED.



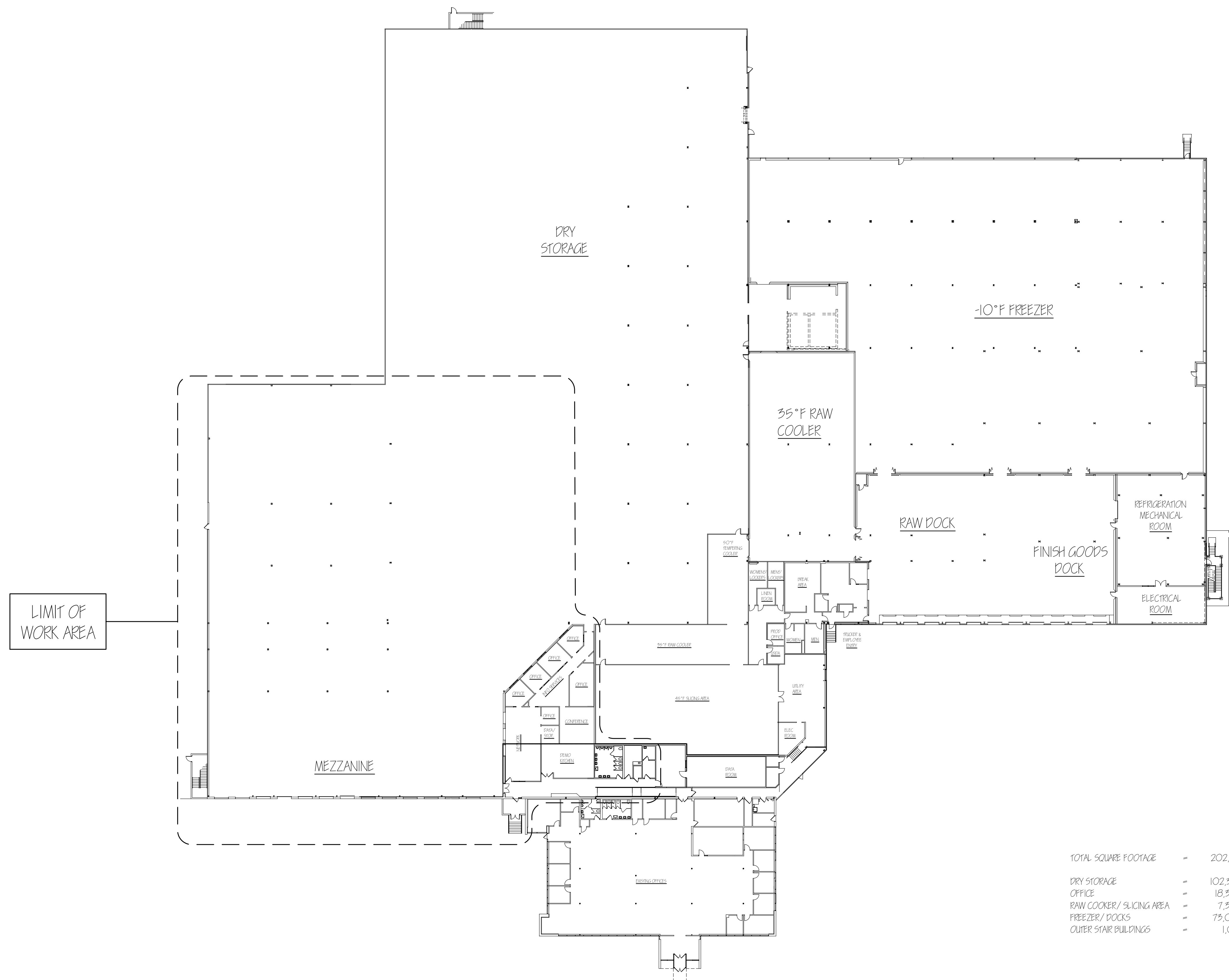
REVISIONS

BARBER FOODS  
ALTERATIONS AT  
56 MILLIKEN STREET  
PORTLAND, MAINE  
JOB TITLE

ARCHITECTURE  
INTERIOR DESIGN  
P.O. BOX 6179 FALMOUTH, MAINE 04105  
(207) 871-5900  
(207) 871-9308

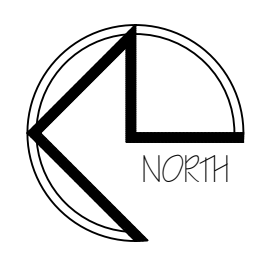
KEY PLAN  
DRAWING TITLE

SCALE NO SCALE  
DATE 19 Jul '10  
DRAWN BY MFH/mjk  
JOB NO. 100630  
DRAWING NO. K-1



TOTAL SQUARE FOOTAGE	=	202,000 SQ. FT.
DRY STORAGE	=	102,350
OFFICE	=	18,350
RAW COOLER/ SLICING AREA	=	7,300
FREEZER/ DOCKS	=	73,000
OUTER STAIR BUILDINGS	=	1,000

NOTE:  
DRAWING PROVIDED BY BARBER FOODS FACILITIES.  
G.C. SHALL FIELD VERIFY AIR CONDITIONS PRIOR TO  
COMMENCING WITH THE WORK.



MILLIKEN FACILITY LAYOUT  
SCALE: 1/32" = 1'-0"



REPRODUCTION OR MISUSE OF THIS DOCUMENT WITHOUT WRITTEN PERMISSION FROM GRANT HAYS ASSOCIATES IS PROHIBITED.

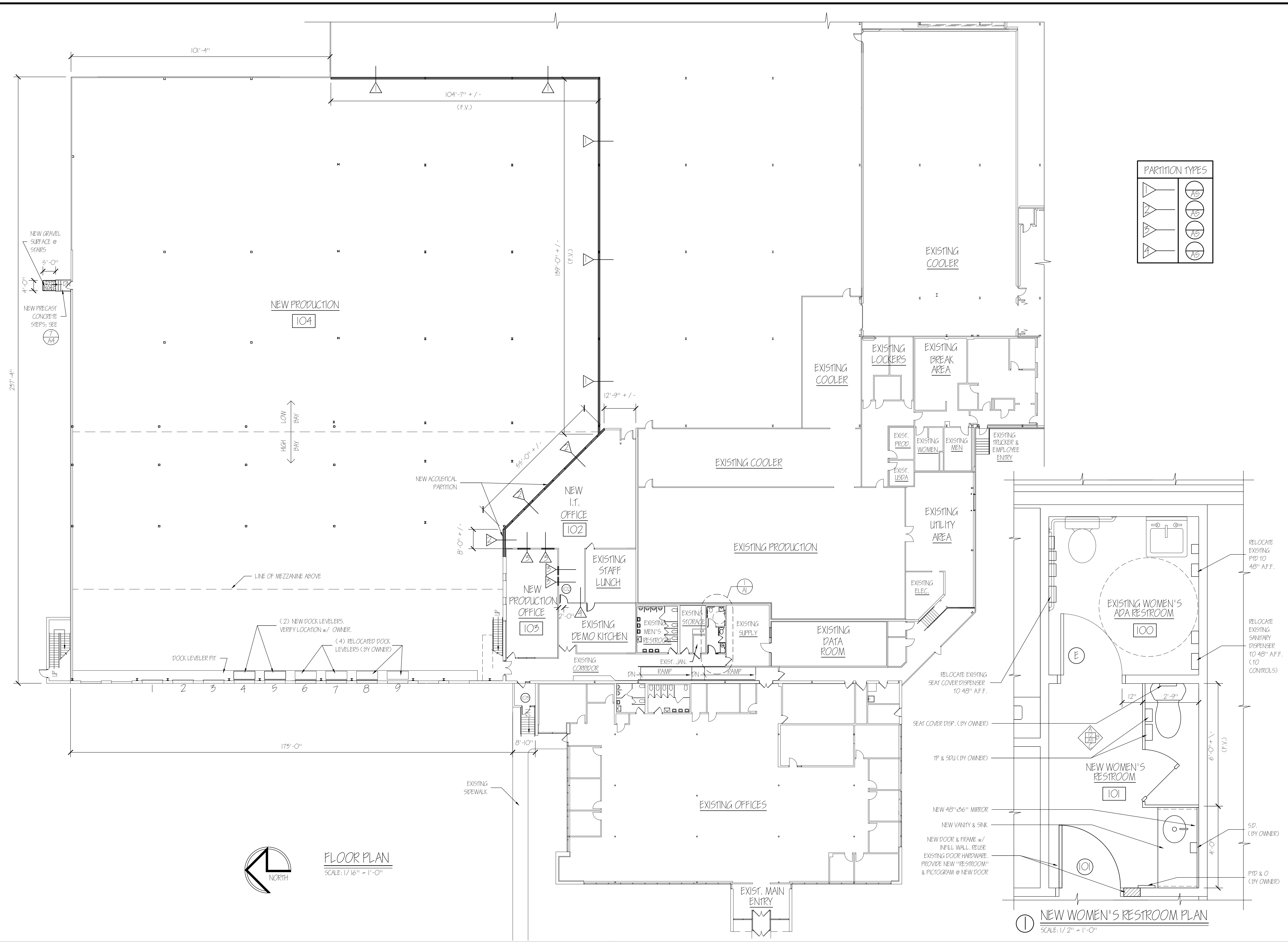
REVISIONS

GRANT HAYS ASSOCIATES  
 BARBER FOODS  
 ALTERATIONS AT  
 56 MILLIKEN STREET  
 PORTLAND, MAINE  
 JOB TITLE

ARCHITECTURE  
 INTERIOR DESIGN  
 P.O. BOX 6179 FALMOUTH, MAINE 04105  
 (207) 871-5800  
 (207) 871-9308

FLOOR PLAN  
 DRAWING TITLE

SCALE NO SCALE  
 DATE 19 Jul '10  
 DRAWN BY MFH/mak  
 JOB NO. 100630  
 DRAWING NO. A-1

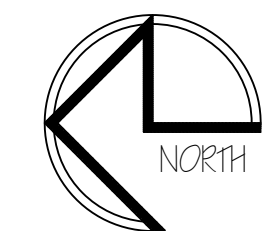


**PARTITION TYPES**

AS	AS	AS	AS

**FLOOR PLAN**  
 SCALE: 1/16" = 1'-0"

**NEW WOMEN'S RESTROOM PLAN**  
 SCALE: 1/2" = 1'-0"



REPRODUCTION OR MISUSE OF THIS DOCUMENT WITHOUT WRITTEN PERMISSION FROM GRANT HAYS ASSOCIATES IS PROHIBITED.

REVISIONS

BARBER FOODS  
ALTERATIONS AT  
56 MILLIKEN STREET  
PORTLAND, MAINE  
JOB TITLE

ARCHITECTURE  
INTERIOR DESIGN  
P.O. BOX 6179 FALMOUTH, MAINE 04105  
(207) 871-5900  
(207) 871-9308

CODE  
COMPLIANCE  
PLAN  
DRAWING TITLE

SCALE NO SCALE  
DATE 19 Jul '10  
DRAWN BY MPH/mak  
JOB NO. 100650  
DRAWING NO. A-2

**NFPA 101 LIFE SAFETY CODE - 2006 EDITION**

Building Classification: Industrial (Ch 40) - 45,000 sf  
 Hazard Classification: Ordinary Hazard  
 Construction Type: Type II (COO)  
 Occupant Loads: Industrial @ 100 sf/ occupant = 450 occupants  
 Separation of Use Ratings: 2 hour (1 hour if sprinkled)  
 Janitor, Mech, Stor Ratings: 1 hour  
 Stair Ratings: 1 hour  
 Elevator Shafts: 2 hours  
 Area of Refuge: 1 hour (none if sprinkled)  
 Minimum Stair width: 44" clear  
 Maximum Riser height: 7"  
 Minimum Tread width: 11"  
 Minimum Headroom: 6'-8" at stairs; 7'-6" at occupied areas  
 Maximum ht. between landings: 12'-0"  
 Handrail height: 34"-38" @ 42" quadrail  
 Handrail top extension: 12" horz.  
 Handrail bottom extension: 11" angled + 12" horz.  
 Handrail diameter: 1-1/4" O.D.  
 Maximum baluster open space: Less than 4"

**Building Uses**  
 \*(x) \* denotes if building is fully sprinkled

Max. Allowable Travel Distance: 200' (250')  
 Max. Allowable Common Path: 50' (100')  
 Max. Dead End Corridor Length: 50' (50')  
 Minimum Egress Corridor Width: 44"  
 Minimum Number of Required Exits: 2  
 Minimum Horz Egress Enclosure rating: 1 hr (none)  
 Minimum Separation of exits: 1/2 diagonal distance  
 Fire Escapes as means of egress: Allowed  
 Minimum Egress Door Width: 36"  
 Exit Lighting: Required  
 Emergency Lighting: Required  
 Fire Alarm System: Required  
 Fire Sprinkler System: Required  
 Portable Fire Extinguishers: Required  
 Exit Device Hardware: Required

**Industrial**

**2006 INTERNATIONAL BUILDING CODE**  
 \*(x) \* denotes if building is fully sprinkled

Use Group Classification: Factory (F-1)  
 Construction: Type IIB - Non-Combustible, Unprotected  
 Occupant Loads: F-1 @ 100 sf/ occ = 450 occupants  
 Area Use Separation Ratings: 2 hour (1 hour)  
 Janitor, Mech & Storage Rooms: 1 hour

**Building Limitations**

Construction Type: IIB Unprotected; Sprinkled  
 Maximum Height: 2 Story (+ 1 story/ 200)  
 Maximum Area / Floor: 15,500 sf (+ 200% @ multiple floors) (Unlimited @ single floor)

**Fire Resistance Ratings**

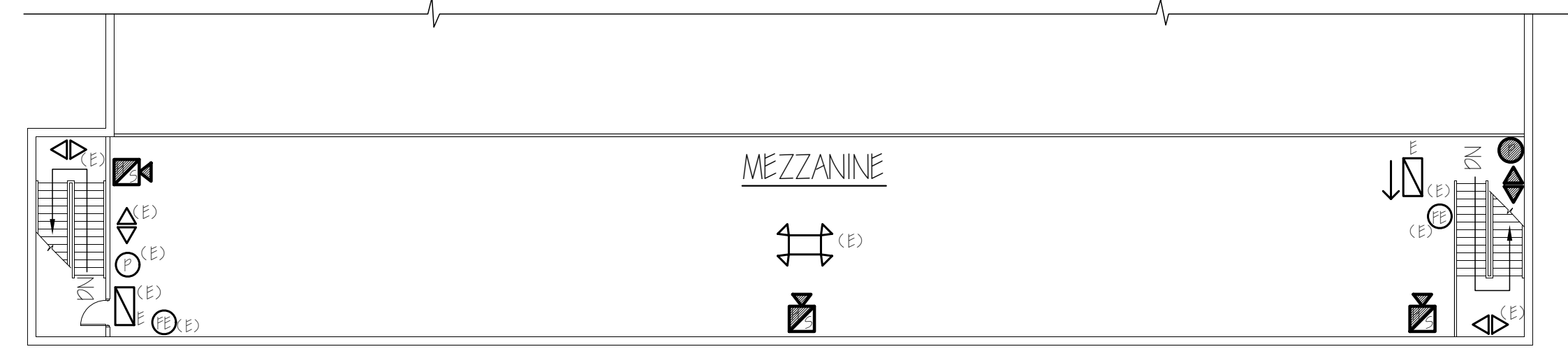
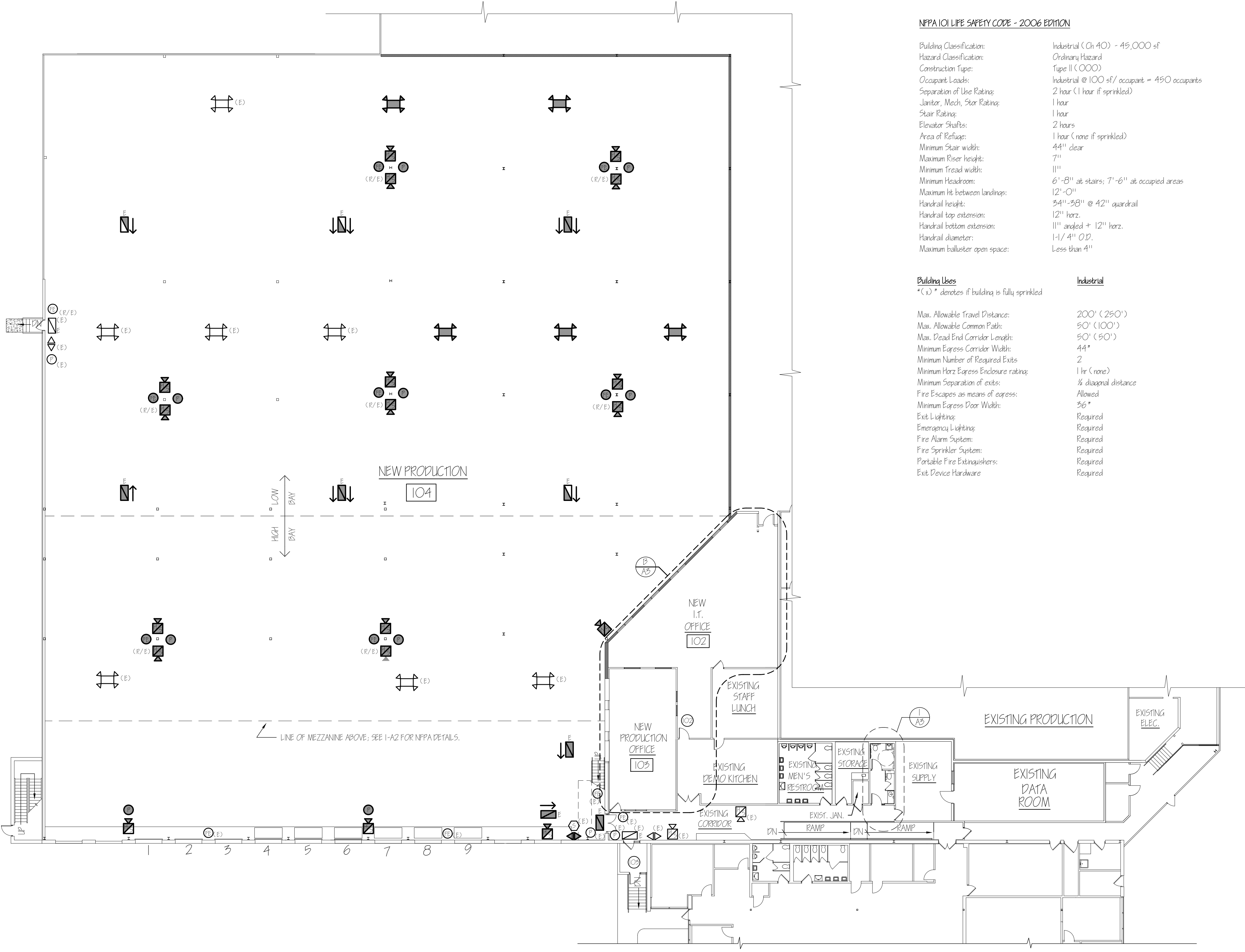
Load Bearing Exterior Walls: None  
 Fire Separation Exits (Stairs): 2 hours (1 hour)  
 Fire Separation of Uses: 2 hours (1 hour)  
 Shafts & Elevator Hoistways: 2 hours  
 Other Assemblies: 1 hour  
 Exit Corridors: 1 hour (none)  
 Minimum Number of Exits: 2 per floor (1 @ mezzanine)  
 Separation of Exits: 1/2 diagonal distance  
 Maximum Dead End Corridor Length: 20'  
 Maximum Common Travel Path: 75'  
 Maximum Travel Distance: 200' (250')  
 Minimum Corridor Width: 44"  
 Minimum Stair Width: 44"  
 Maximum Riser Height: 7"  
 Minimum Tread Depth: 11"  
 Minimum Ramp Width: 44"  
 Maximum Ramp Pitch: 1:12  
 Handrails: Same as NFPA 101  
 Minimum Ceiling Height: 7'-6"

**Fire Alarm System:** Required  
**Fire Sprinkler System:** Required  
**Portable Fire Extinguishers:** Required  
**Exit Lighting:** Required  
**Emergency Lighting:** Required

**Building Live Loads**

Office: 50 psf  
 Lobbies: 100 psf  
 Corridors: 80 psf  
 Storage: 125 psf @ light; 250 psf @ heavy

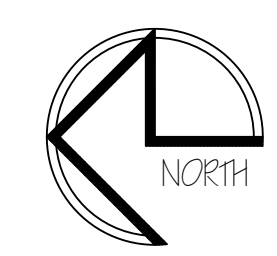
NFPA LEGEND	
	EXIT LIGHT
	EXIT LIGHT / DIRECTIONAL
	EMERGENCY LIGHT
	EMERGENCY LIGHT
	HORN (110 db)
	STROBE (15 db)
	STROBE (15 db)
	FIRE EXTINGUISHER
	MANUAL FIRE ALARM PULL
	SMOKE DETECTOR
	NEW
	EXISTING

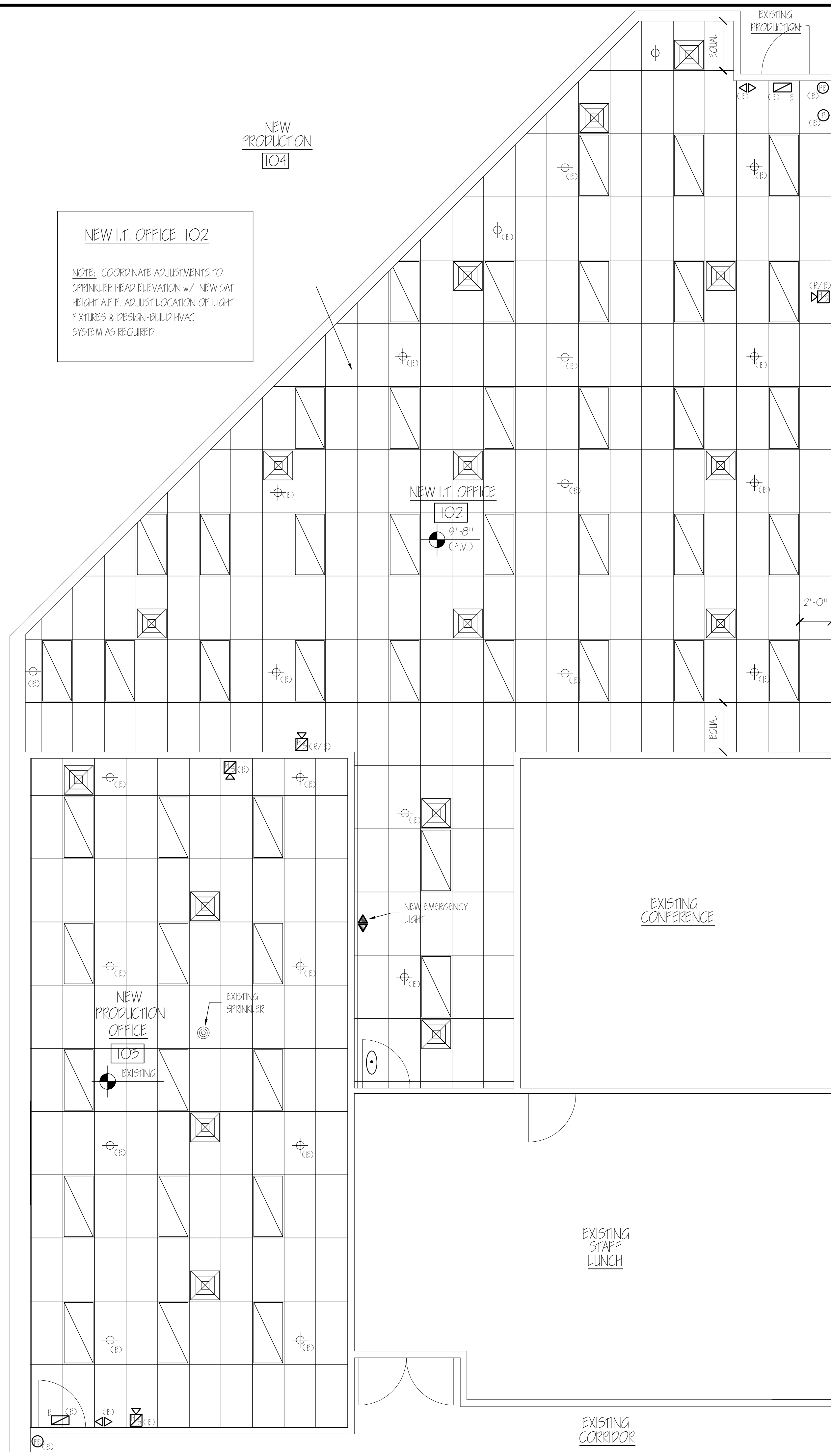


MEZZANINE CODE COMPLIANCE PLAN  
 SCALE: 1/16" = 1'-0"

CODE COMPLIANCE PLAN  
 SCALE: 1/16" = 1'-0"

NOTE:  
 MODIFY EXISTING NFPA 13 SPRINKLER SYSTEM TO NEW PARTITION LAYOUT AS REQUIRED FOR COMPLIANCE / PERMITTING BY THE MAINE STATE FIRE MARSHAL'S OFFICE.



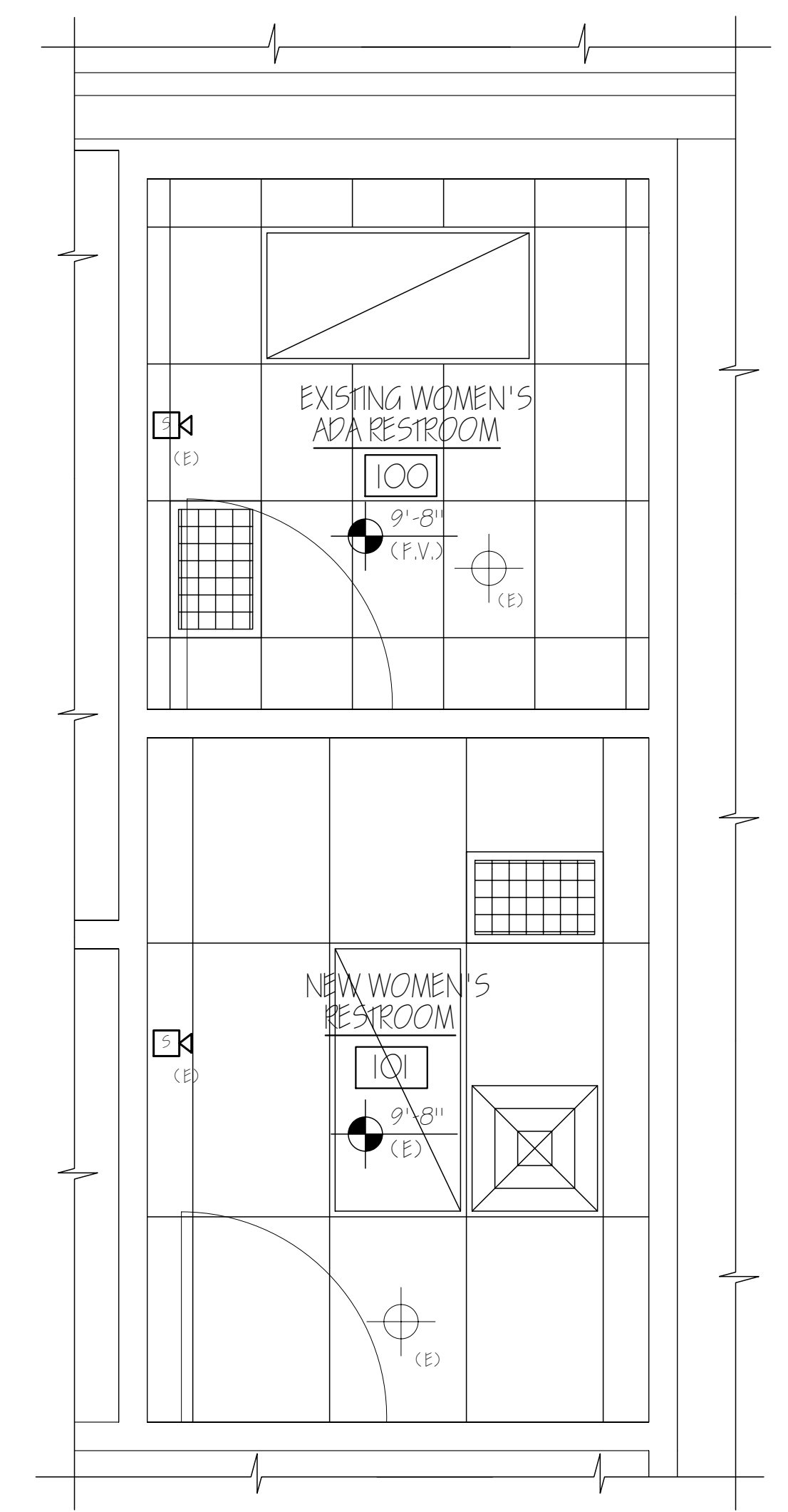


NEW I.T. OFFICE 102

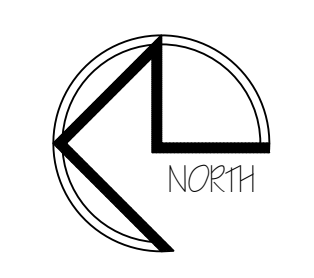
NOTE: COORDINATE ADJUSTMENTS TO SPRINKLER HEAD ELEVATION w/ NEW SAT HEIGHT A.F.F. ADJUST LOCATION OF LIGHT FIXTURES & DESIGN-BUILD HVAC SYSTEM AS REQUIRED.

**NFPA LEGEND**

	EXIT LIGHT
	EXIT LIGHT/DIRECTIONAL
	EMERGENCY LIGHT
	EMERGENCY LIGHT
	HORN (110 db) STROBE (15 db)
	STROBE (15 db)
	FIRE EXTINGUISHER
	MANUAL FIRE ALARM PULL
	SMOKE DETECTOR
	"NOT AN EXIT" SIGN
	NEW
	EXISTING



① EXISTING PARTIAL CODE COMPLIANCE / REFLECTED CEILING PLAN  
SCALE: 1/4" = 1'-0"



② PARTIAL CODE COMPLIANCE / REFLECTED CEILING PLAN  
SCALE: 1/4" = 1'-0"

NOTE:  
MODIFY EXISTING NFPA 13 SPRINKLER SYSTEM TO NEW PARTITION LAYOUT AS REQUIRED FOR COMPLIANCE / PERMITTING BY THE MAINE STATE FIRE MARSHAL'S OFFICE.

REPRODUCTION OR MISUSE OF THIS DOCUMENT WITHOUT WRITTEN PERMISSION FROM GRANT HAYS ASSOCIATES IS PROHIBITED.

REVISIONS


BARBER FOODS  
ALTERATIONS AT

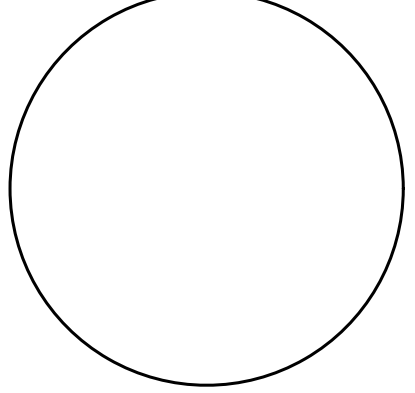
56 MILLIKEN STREET  
PORTLAND, MAINE

GRANT HAYS ASSOCIATES  
ARCHITECTURE  
INTERIOR DESIGN  
P.O. BOX 6179 FALMOUTH, MAINE 04105  
(207) 871-5900  
(207) 871-9308

REFLECTED CEILING & CODE COMPLIANCE PLAN  
DRAWING TITLE

SCALE	NO SCALE
DATE	19 Jul '10
DRAWN BY	MPH/mak
JOB NO.	100630
DRAWING NO.	A-3

REPRODUCTION OR MISUSE OF THIS DOCUMENT WITHOUT WRITTEN PERMISSION FROM GRANT HAYS ASSOCIATES IS PROHIBITED.



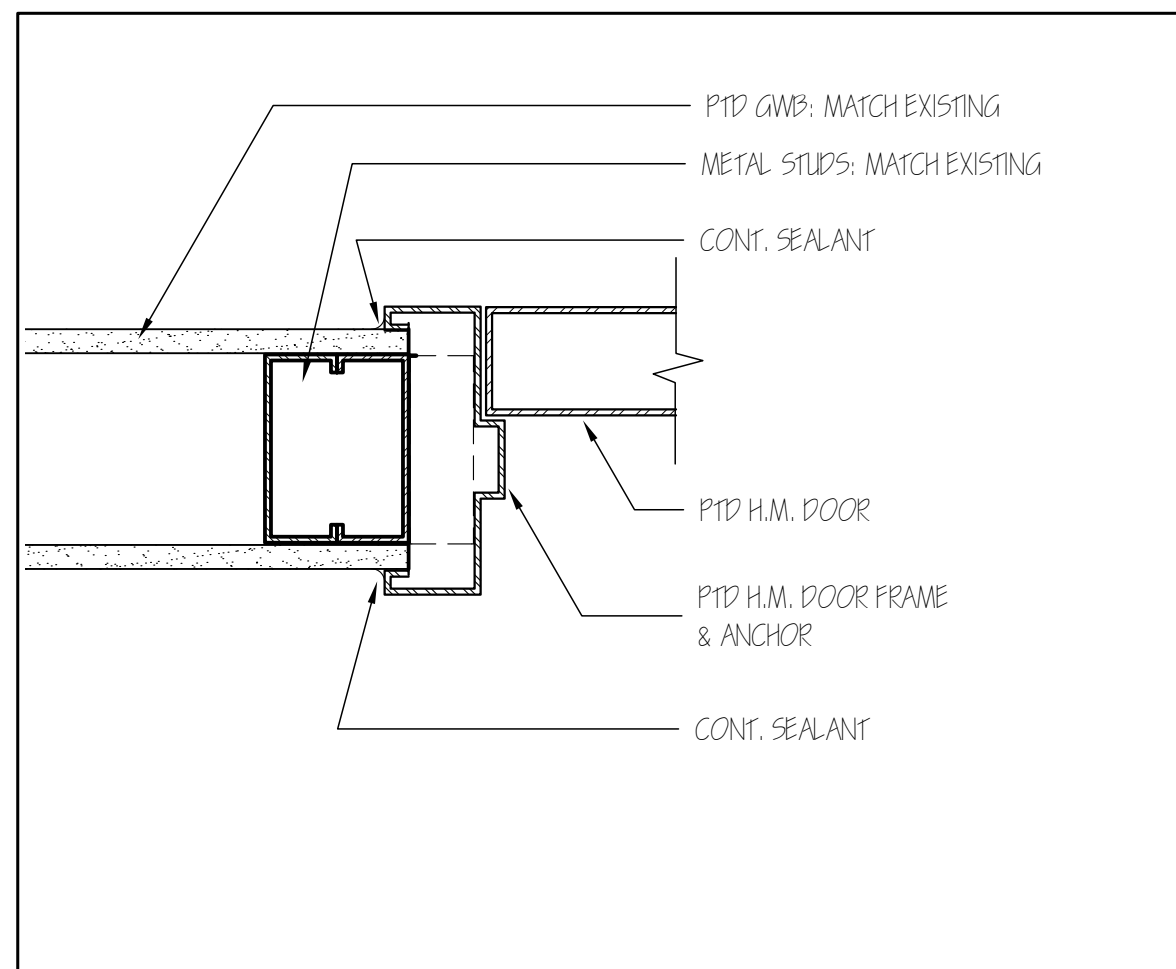
REVISIONS

BARBER FOODS ALTERATIONS AT  
56 MILLIKEN STREET  
PORTLAND, MAINE  
JOB TITLE

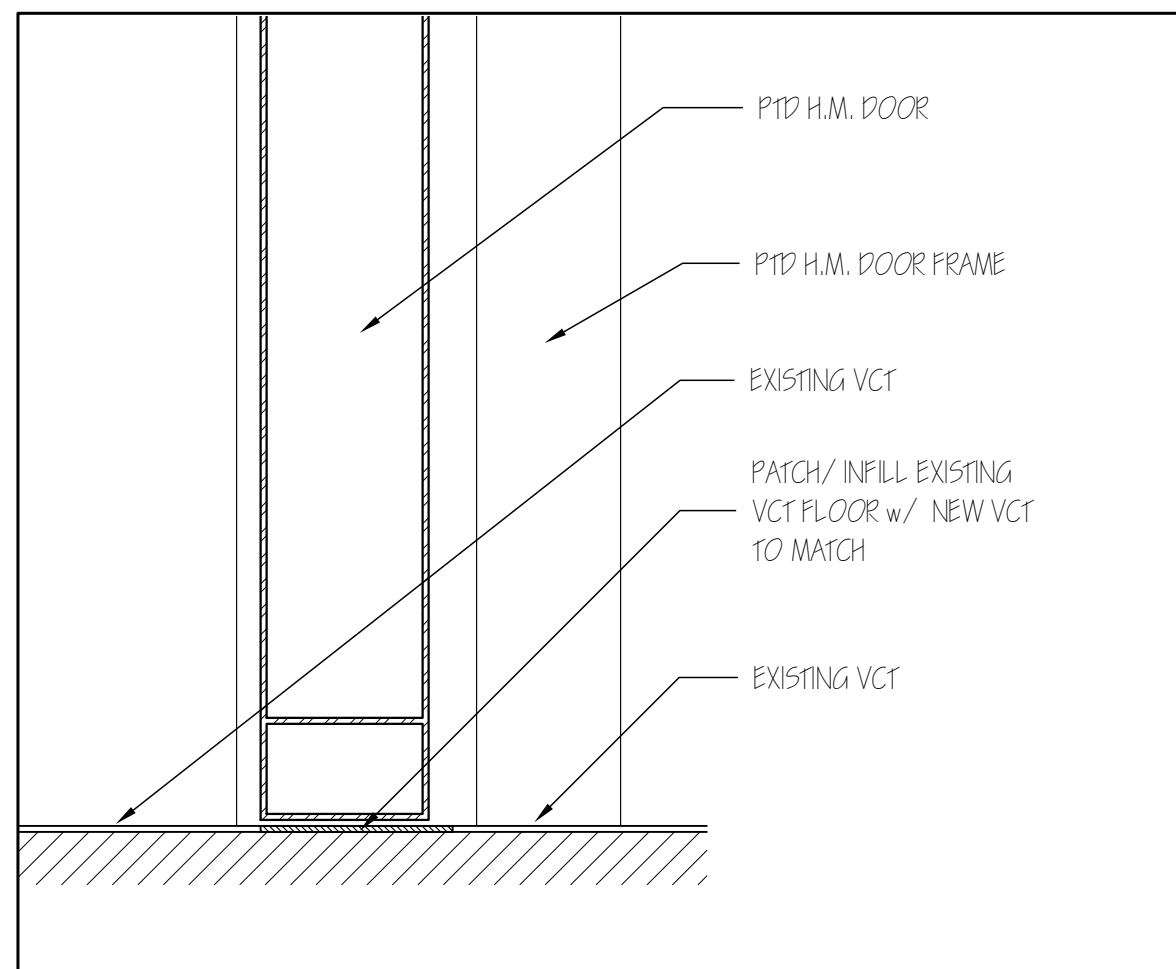
ARCHITECTURE INTERIOR DESIGN  
P.O. BOX 6179 FALMOUTH, MAINE 04105  
(207) 871-5900 (207) 871-9308

DOORS  
DRAWING TITLE

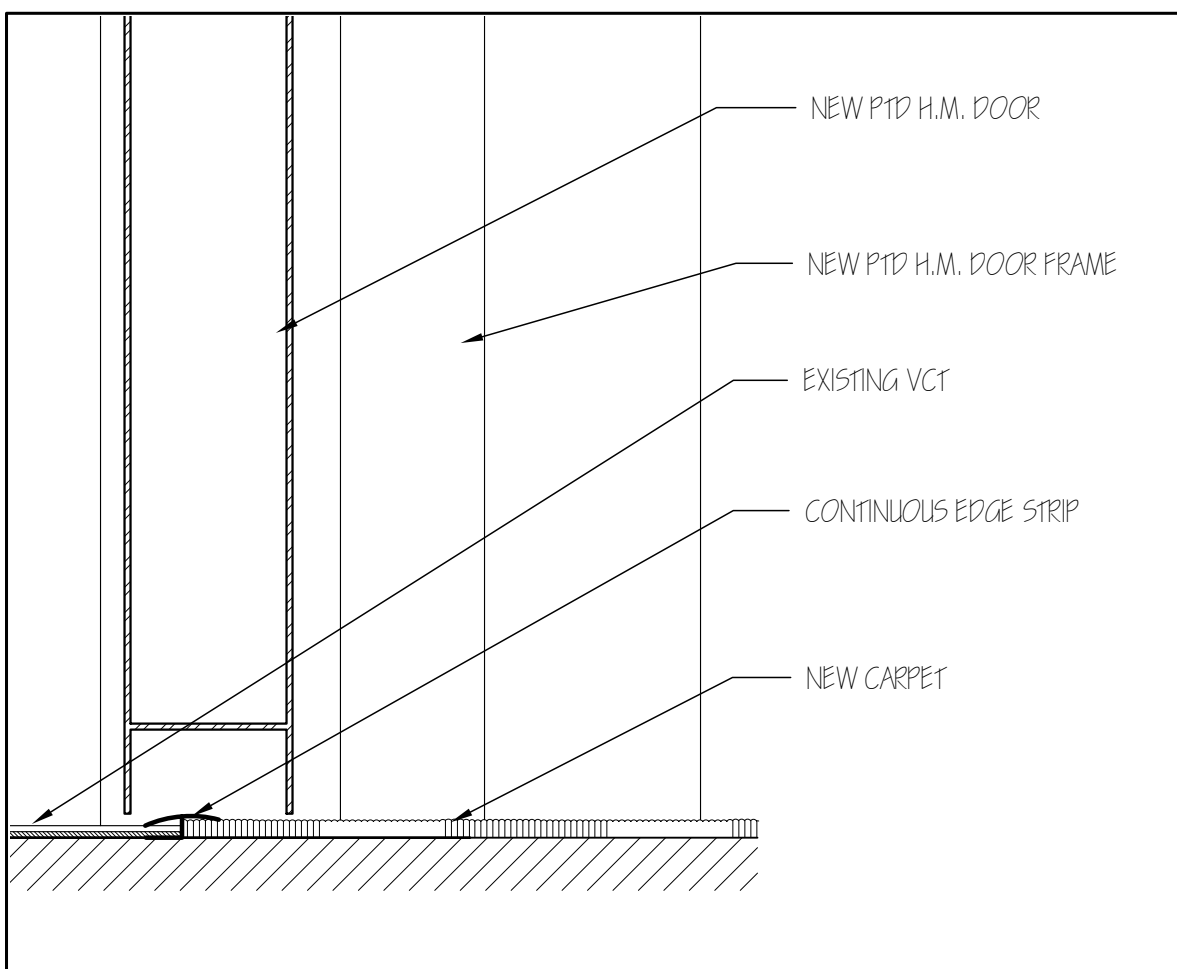
SCALE NO SCALE  
DATE 19 Jul '10  
DRAWN BY MPH/mak  
JOB NO. 100630  
DRAWING NO. A-4



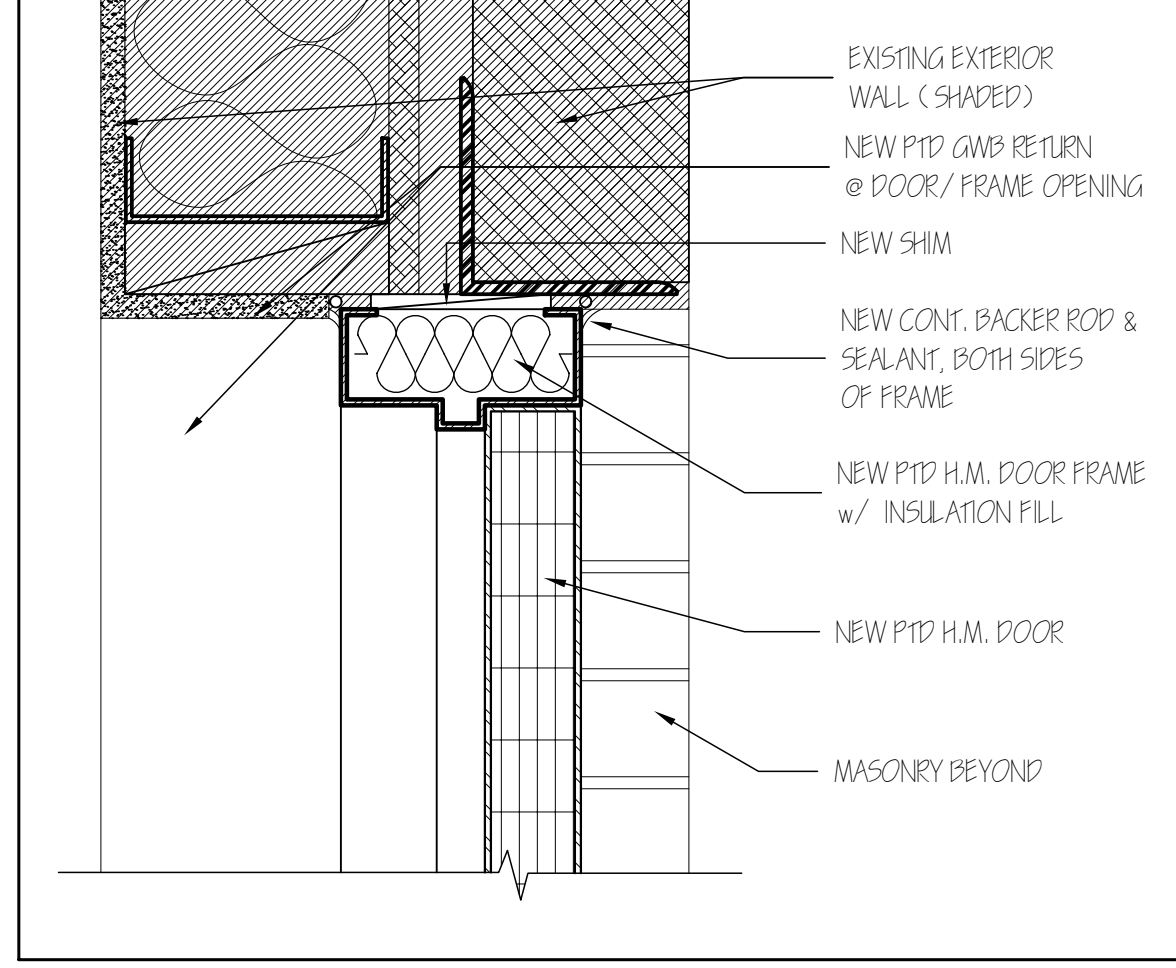
1 INTERIOR H.M. DOOR JAMB/HEAD 3/8" = 1'-0"



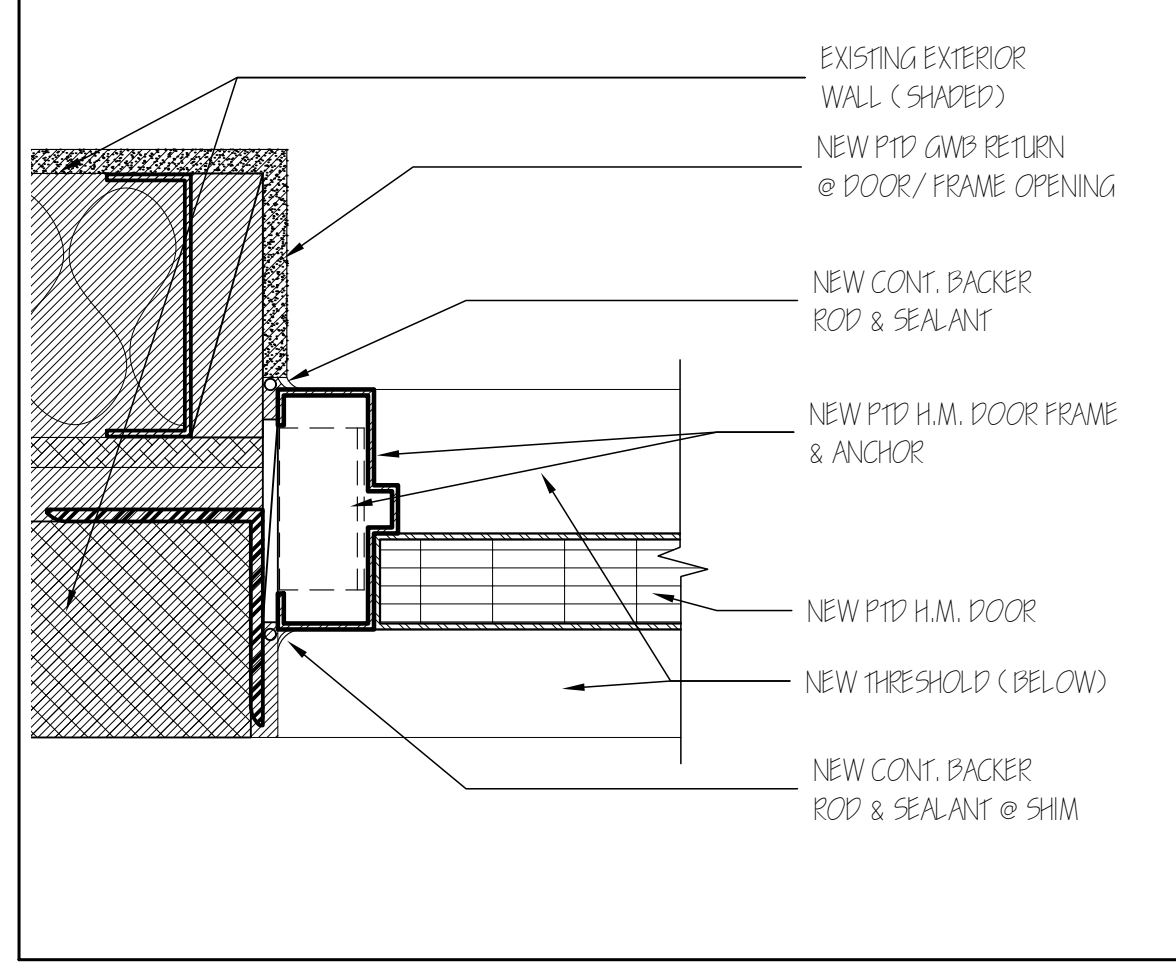
2 INTERIOR H.M. DOOR SILL 3/8" = 1'-0"



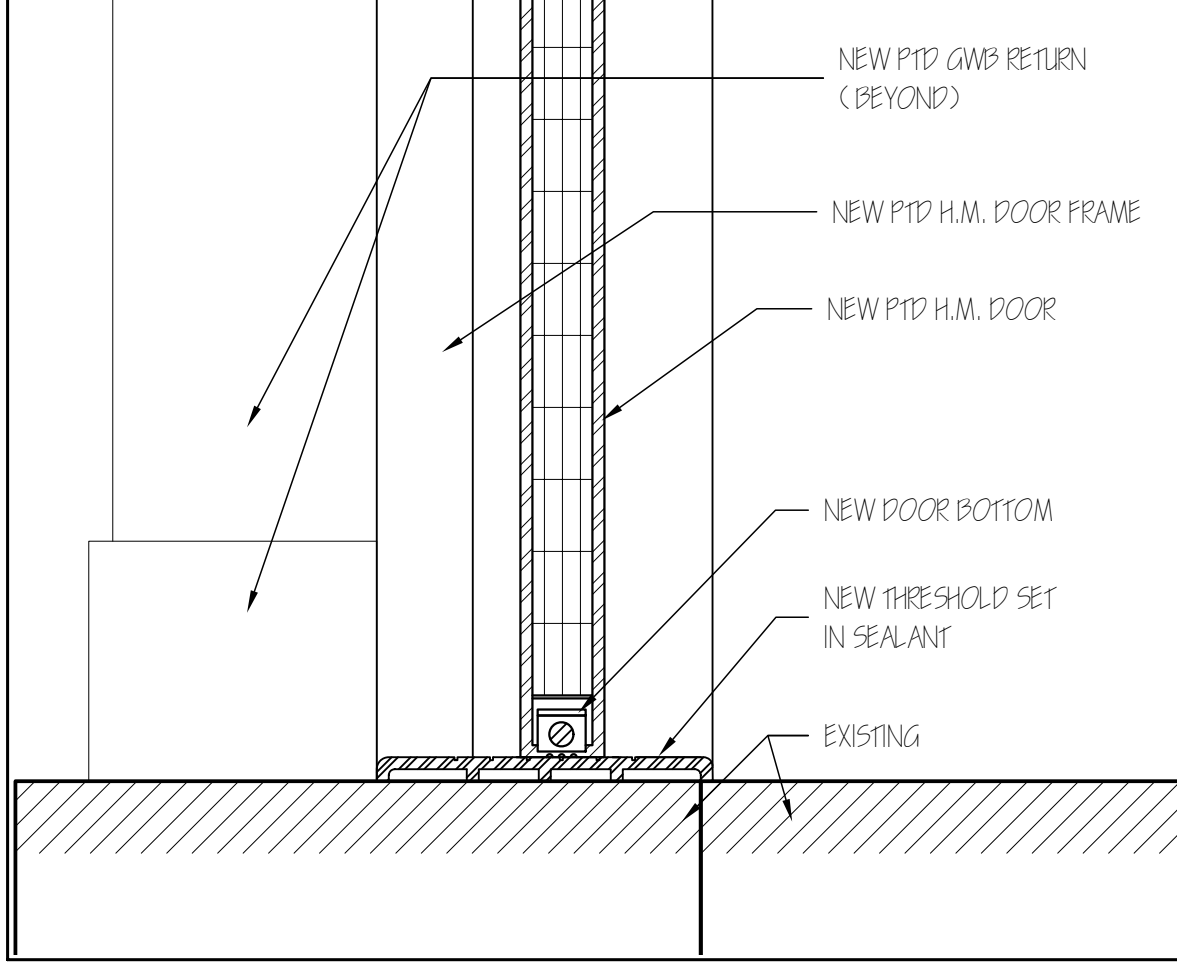
3 INTERIOR H.M. DOOR SILL (E.S.) 3/8" = 1'-0"



4 EXTERIOR H.M. DOOR HEAD 3/8" = 1'-0"



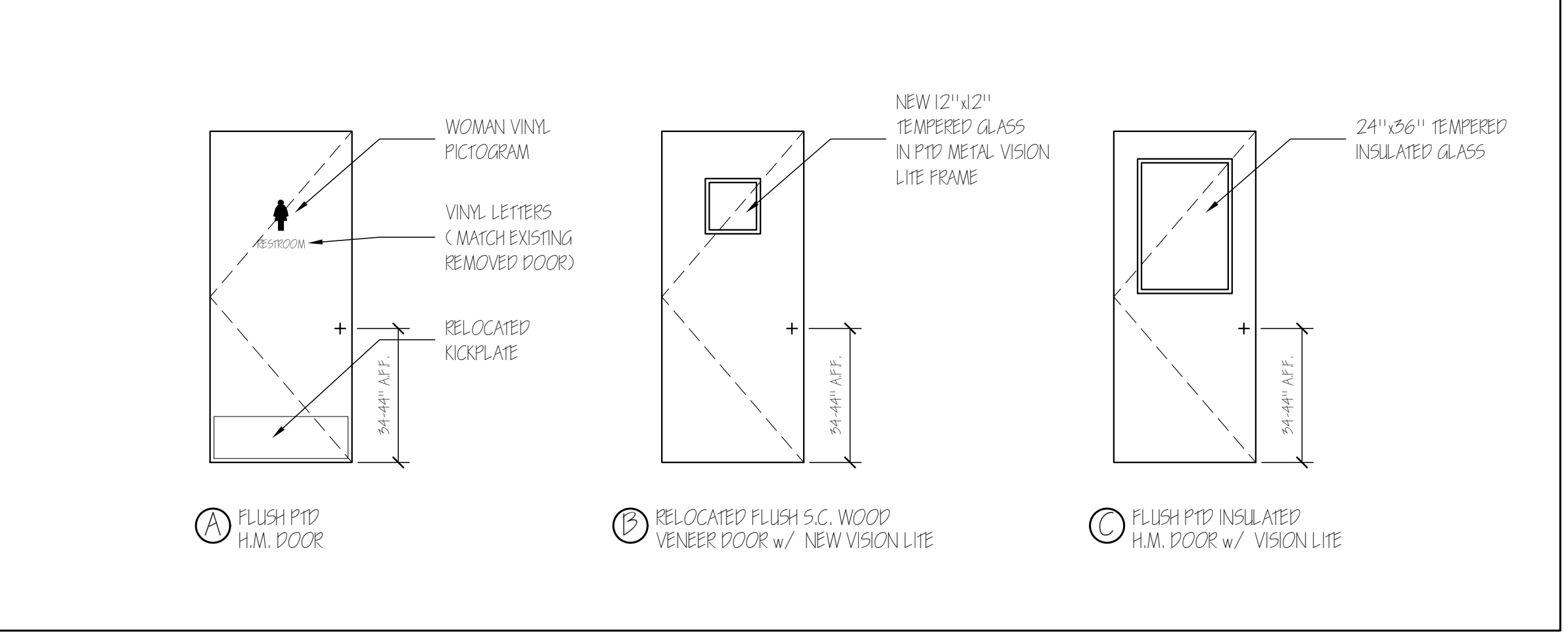
5 EXTERIOR H.M. DOOR JAMB 3/8" = 1'-0"



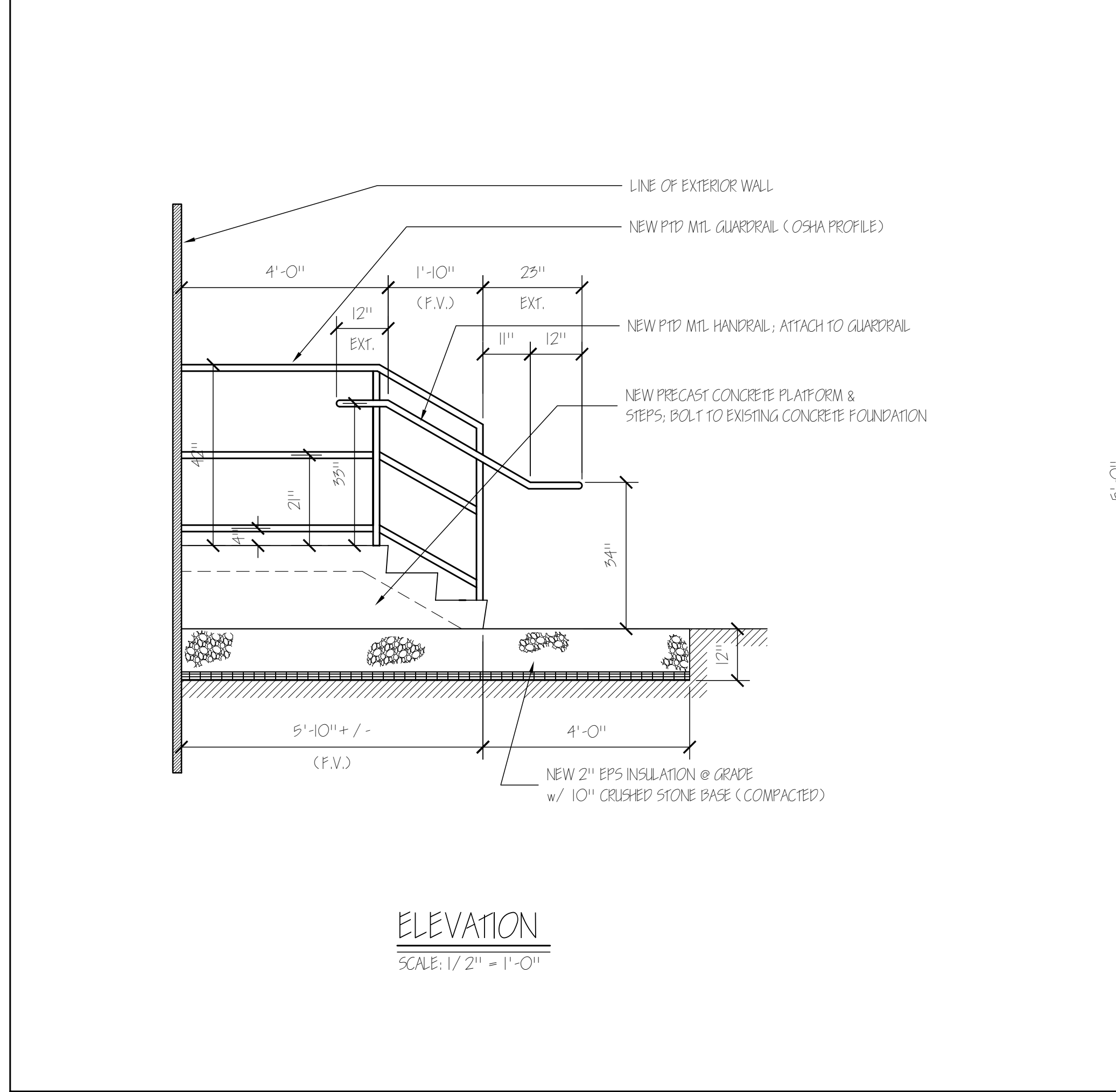
6 EXTERIOR H.M. DOOR THRESHOLD 3/8" = 1'-0"

### DOOR SCHEDULE

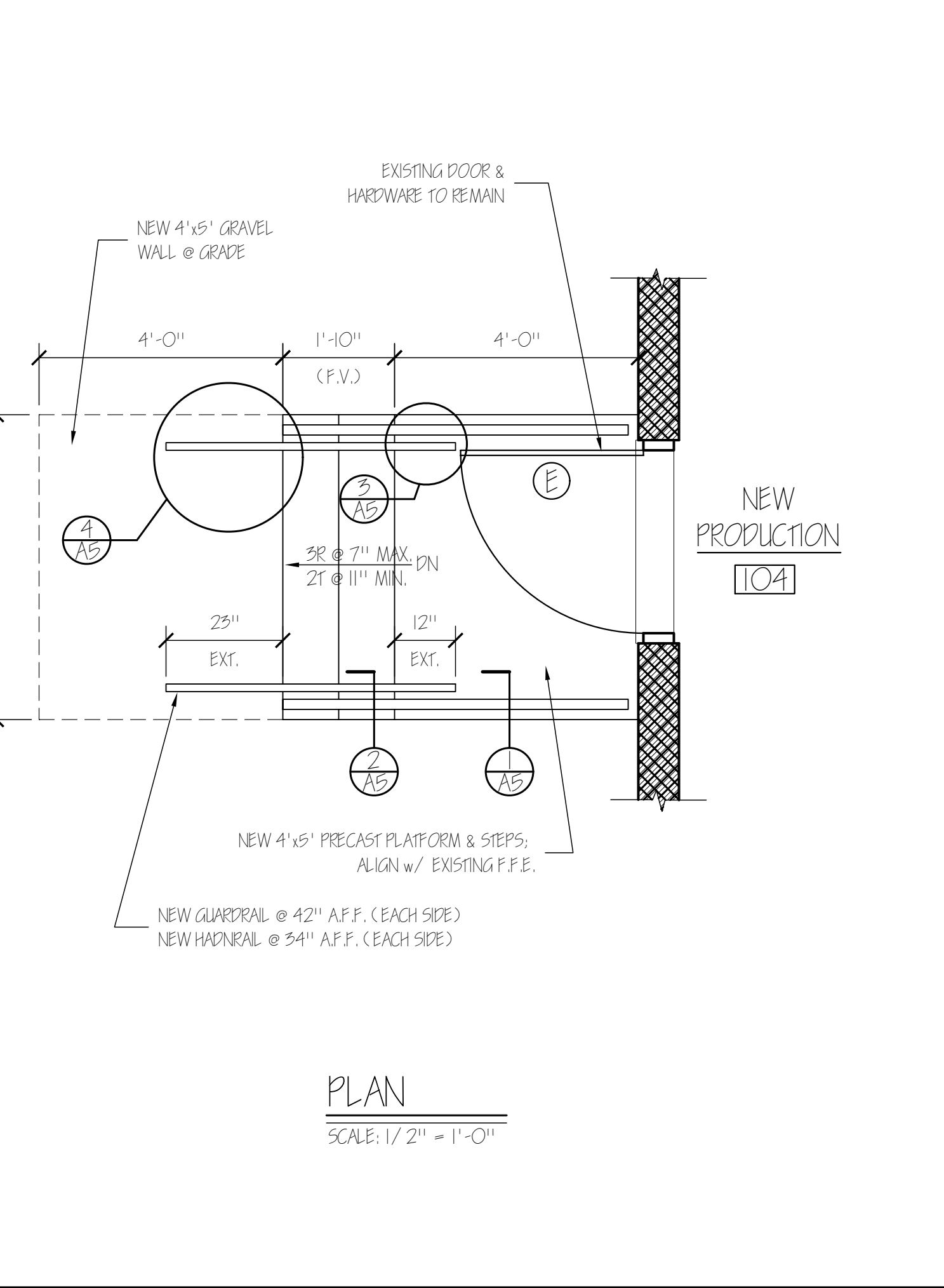
NO.	TYPE	SIZE (w x h)	THK	INSUL	HDWE	FR	GLASS		REMARKS	TYPE	FR	PROFILES		DETAILS		THRESHOLDS		
							TYPE	SIZE				HEAD	JAMB	MATERIAL	SILL	FIN		
							E	E				E	E	E	E			
101	A	3070	1 3/4"	NO	HW-1	NO	NONE	NONE	EXISTING	A	NO	DW	1-AA	1-AA(SIM)	VCT		E	E
102	B/E	3070	1 3/4"	NO	HW-2	NO	TEMP	12x12	RELOCATED	B/E	NO	DW/E	1-AA	1-AA(SIM)	E.S.			
103	C	3070	1 3/4"	YES	HW-3	NO	1/TH	24x36	SIDELITE	C	NO	MAS	4-AA	5-AA	ALUM	6-AA		



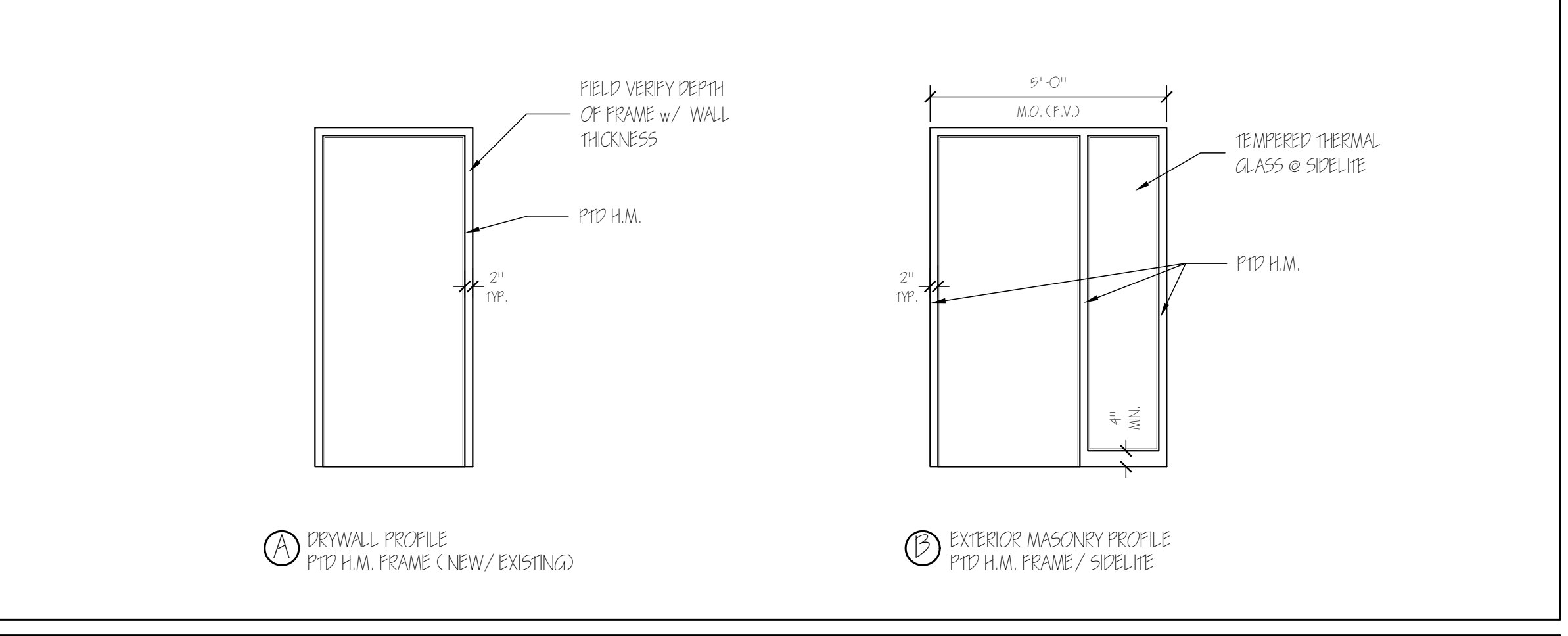
DOOR TYPES NO SCALE



7 NEW PRECAST STAIR @ EXISTING EXIT DOOR 1/2" = 1'-0"



PLAN SCALE: 1/2" = 1'-0"



FRAME TYPES NO SCALE

- ### HARDWARE SETS
- |  |  |
|--|--|
| HW-1 INTERIOR SINGLE DOOR  | HW-3 NEW EXTERIOR SINGLE DOOR WITH SIDELITE            |
| 3 BUTTS (R/E)  | 3 BUTTS  |
| 1 CLOSER (R/E)   | 1 EXIT DEVICE WITH EXTERIOR THUMBPLATE PULL & CYLINDER |
| 1 NEW PUSH/PULL SET  | 1 CLOSER   |
| 1 KICKPLATE (R/E)  | 1 KICKPLATE  |
| 1 SILENCERS  | 1 THRESHOLD  |
|  | 1 SET OF HEAD/ JAMB WEATHERSTRIPPING                   |
| HW-2 RELOCATED INTERIOR SINGLE DOOR                                    |  |
| 3 BUTTS (R/E)  |  |
| 1 NEW LEVER LOCKSET-OFFICE FUNCTION w/ ELECTRONIC STRIKE & CARD READER |  |
| 1 CLOSER (R/E)   |  |
| 1 SILENCERS  |  |

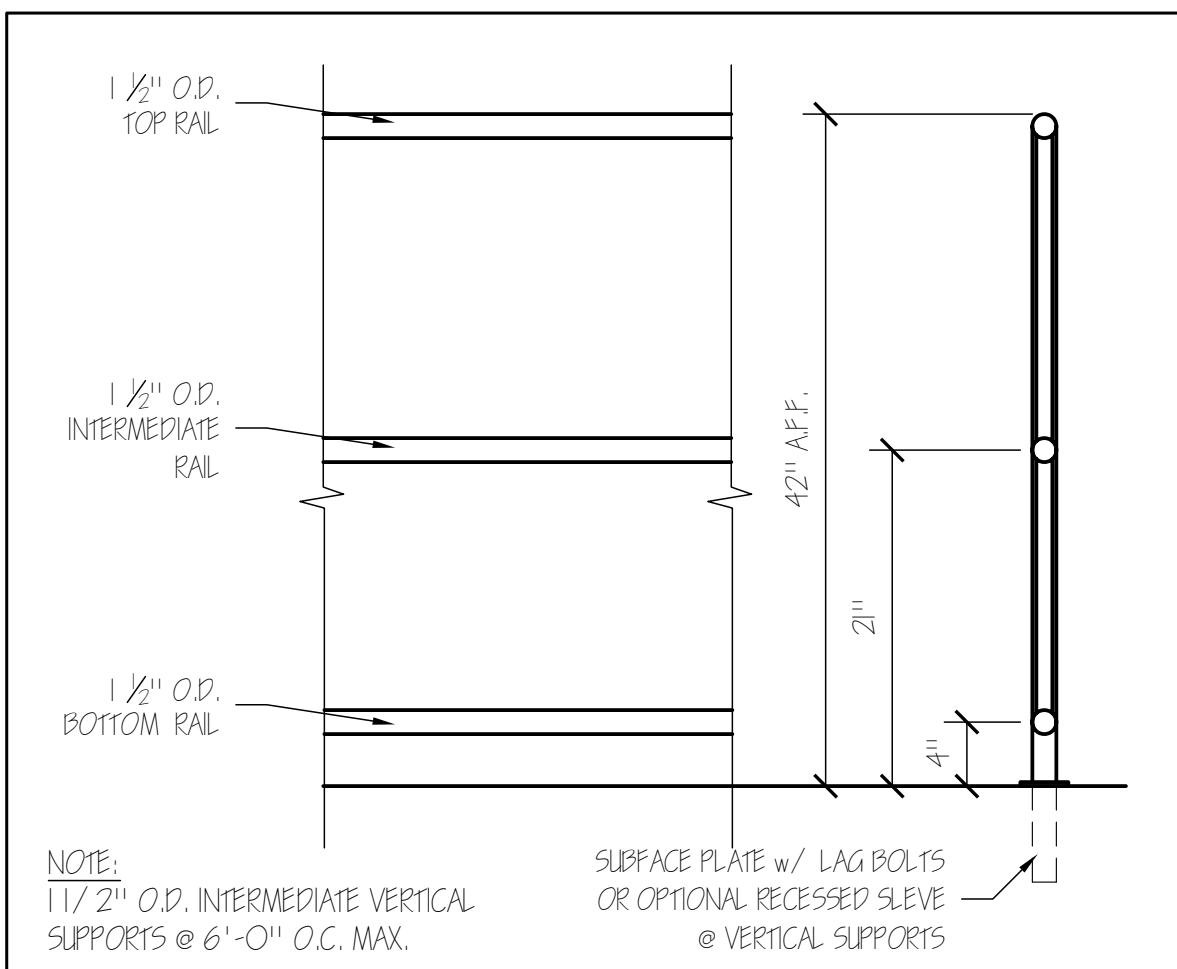
HARDWARE SETS

**FINISH SCHEDULE**

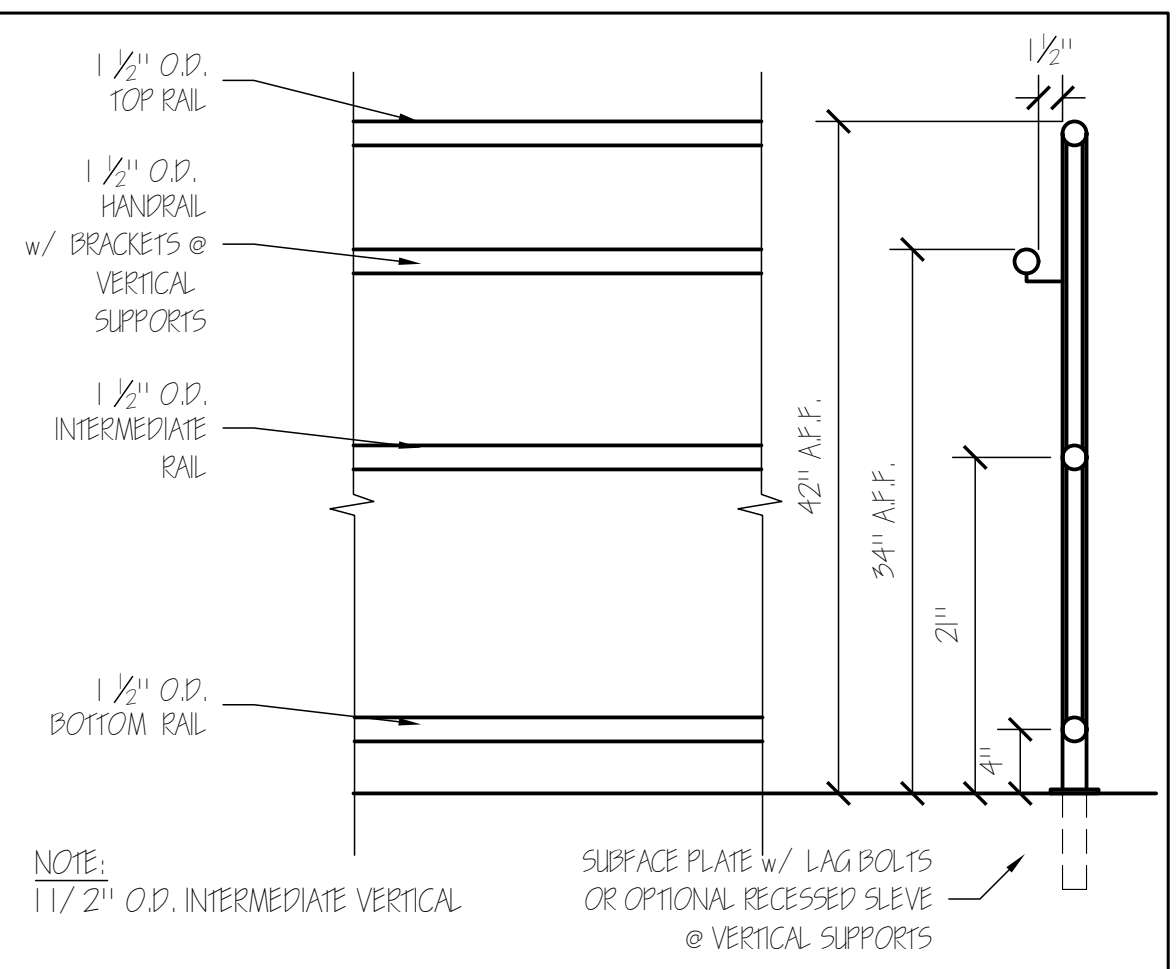
**ABBREVIATIONS**

CC	CARREL	FW	FIBERGLASS FIBERFACED PANELS	GS	GLASS SHEET
CMU	CONCRETE MASONRY UNIT	FV	FIBERGLASS VERIFIED	SS	STAINLESS STEEL
CT	CERAMIC TILE	GL	GLASS	SP	SPRINKLER HEAD
E	EXISTING	GWP	GYPSONUM WALL BOARD	VCB	VINYL COMPOSITION BOARD
EP	EPOXY PAINT	P	PAINT	VCL	VINYL WALL COVERING
FOP	FLOOR FINISH SYSTEM	PCS	PAINT COAT SYSTEM	WCL	WALL COVERING (TYPE)
		RCF	REINFORCED CONCRETE	WV	WOOD

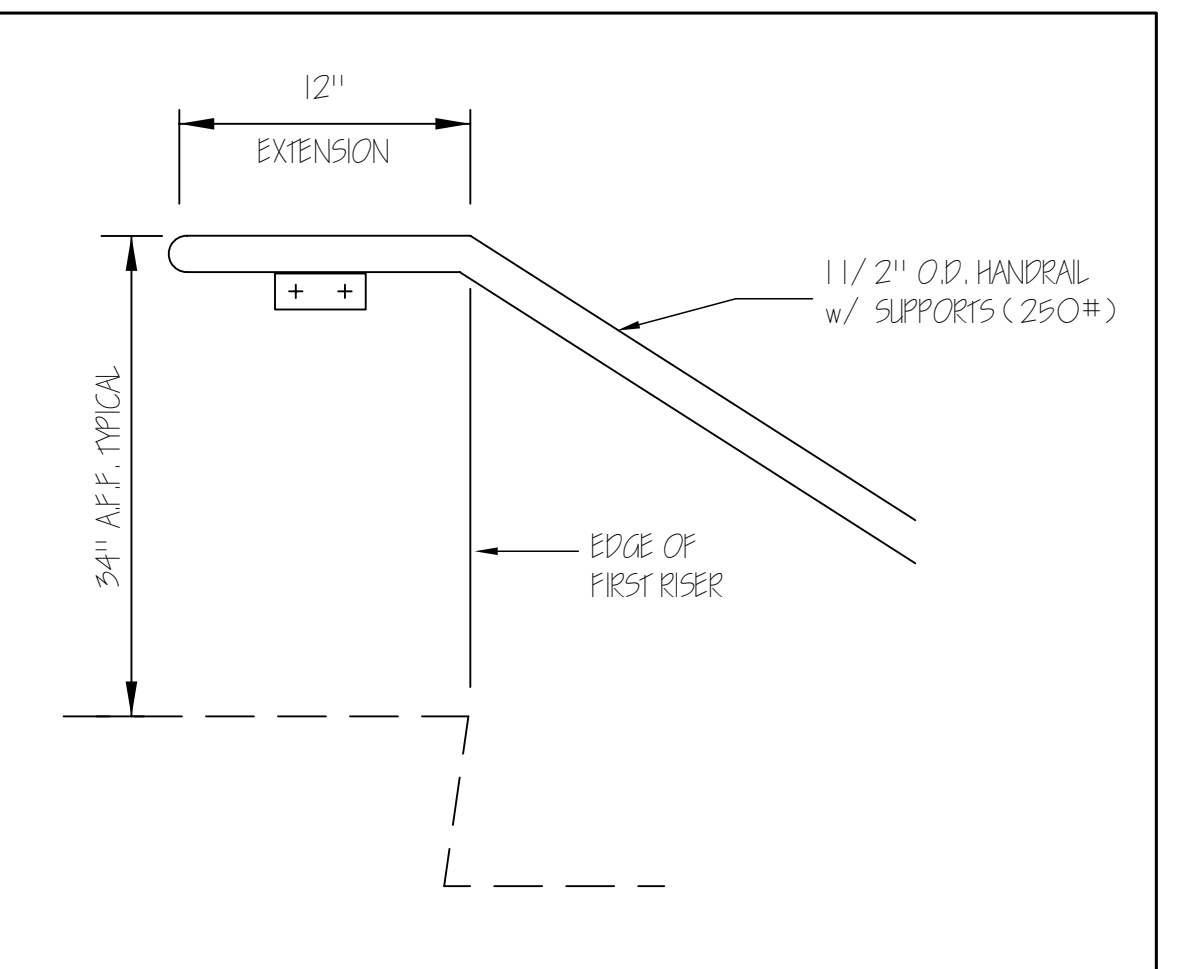
RM NO.	NAME	WALLS				FLOORS				CEILING A		CEILING B		REMARKS
		N	E	S	W	MAT'L	BASE	MAT'L	BASE	TYPE	HT.	TYPE	HT.	
101	NEW WOMEN'S	P	P	P	P	E	VCB	---	---	E	E	---	---	
102	NEW L.T. OFFICE	P	P	P	P	VCT	VCB	---	---	SAT	9'-8"	---	---	
103	NEW PRODUCTION OFFICE	P	P	P	P	E	VCB	---	---	E	E	---	---	
104	NEW PRODUCTION	E	P/GWB	P/GWB	P/PLWD	E	VCB	E	E	E	E	E	E	*NEW GWB WALLS ONLY



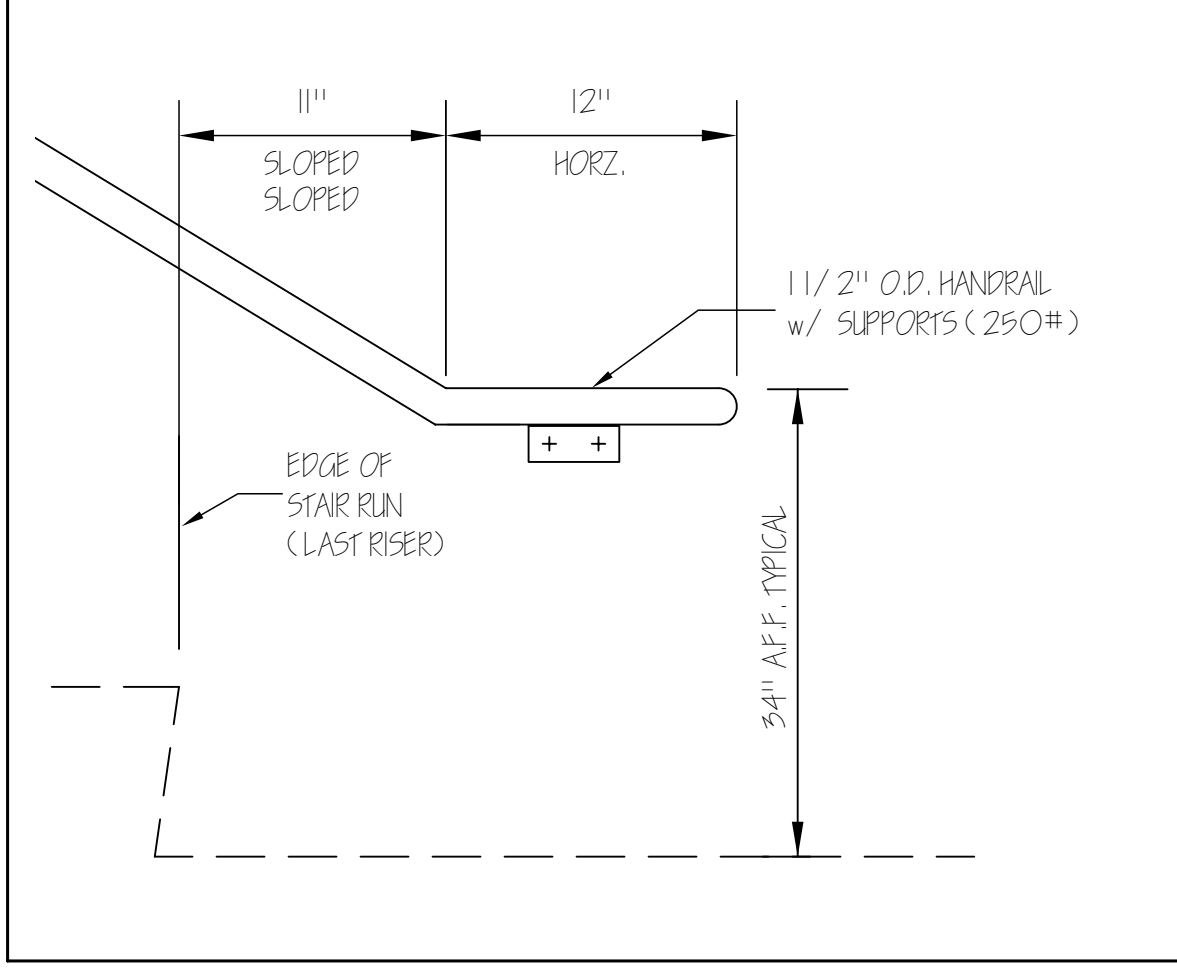
① TYPICAL EXTERIOR GUARDRAIL (OSHA) N.T.S.



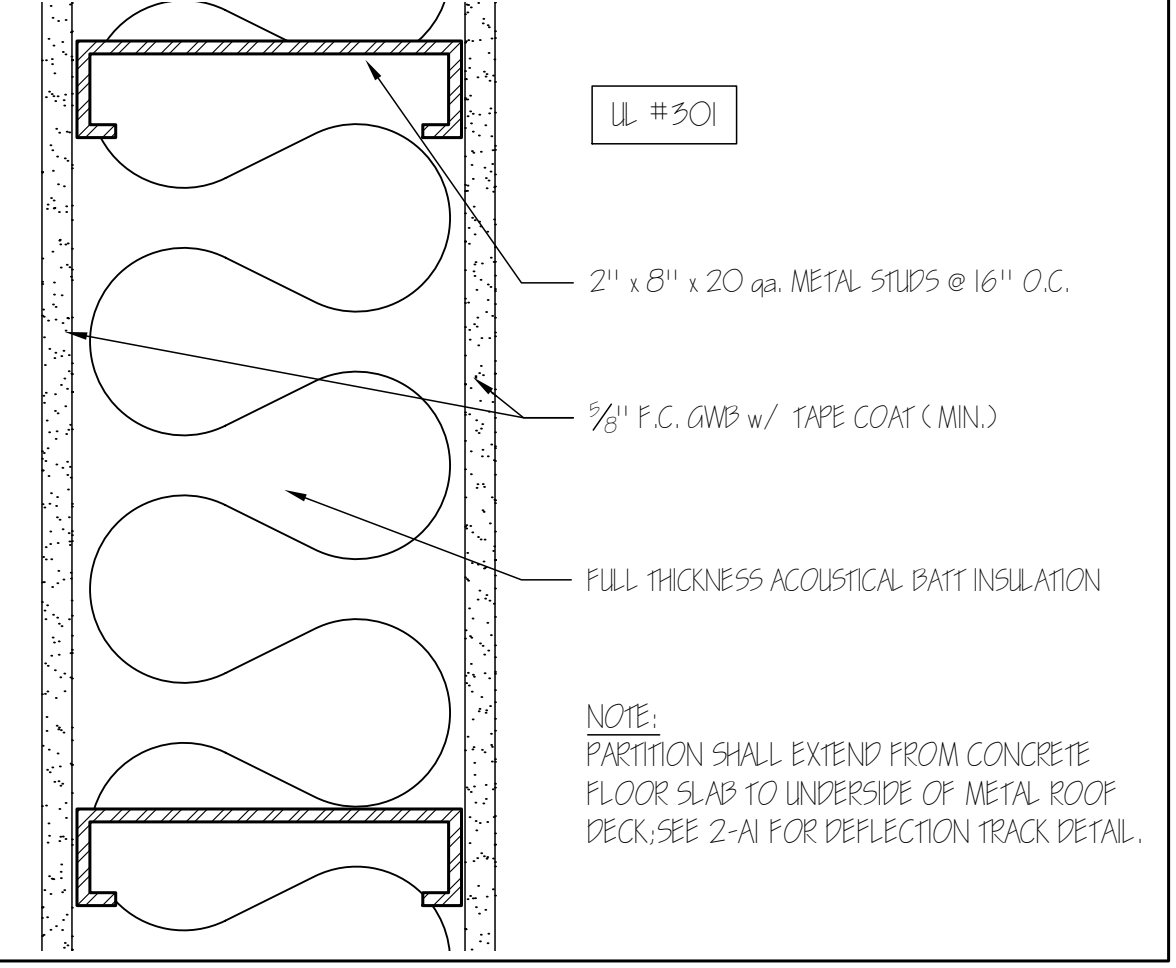
② TYPICAL EXTERIOR GUARDRAIL (OSHA) N.T.S.



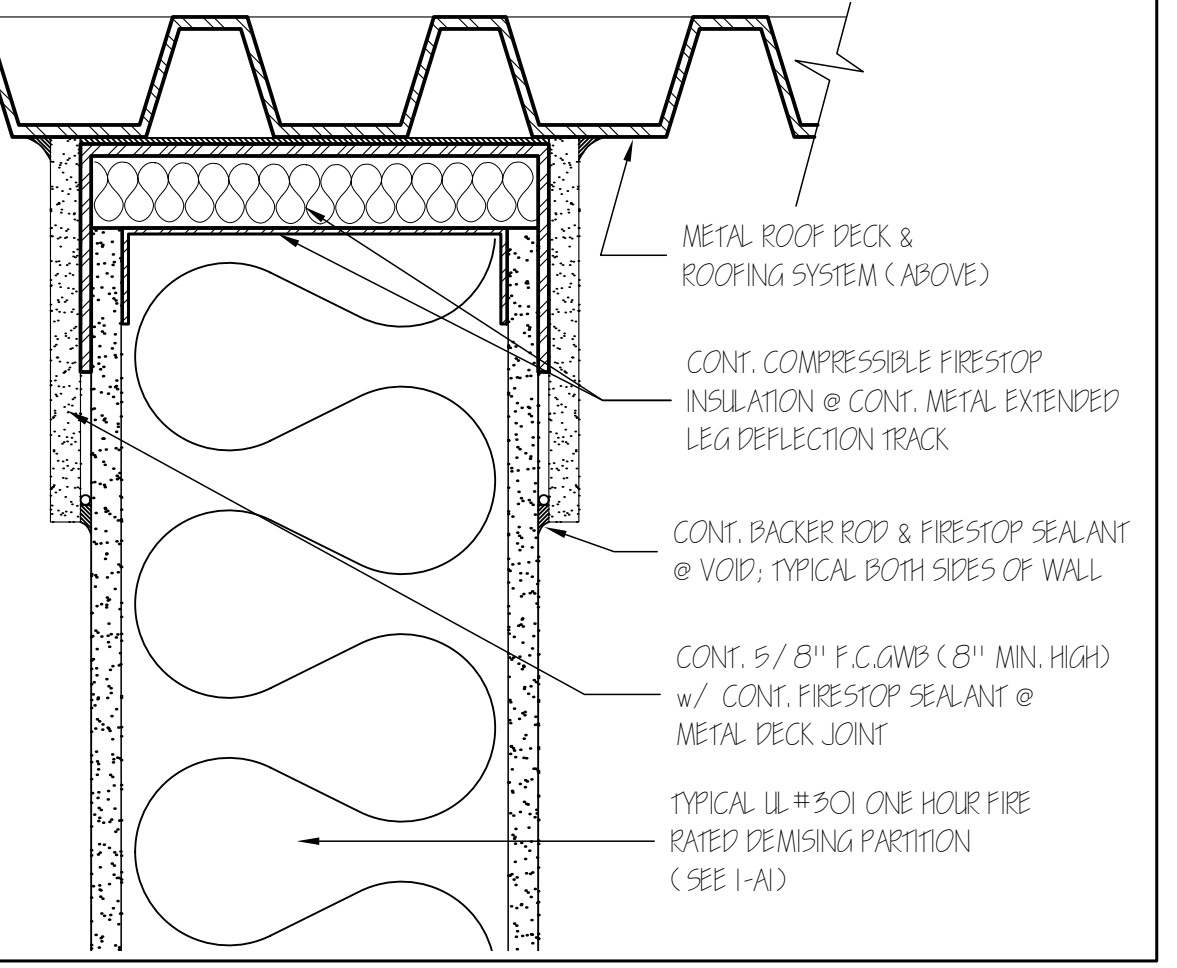
③ HANDRAIL EXTENSION @ TOP N.T.S.



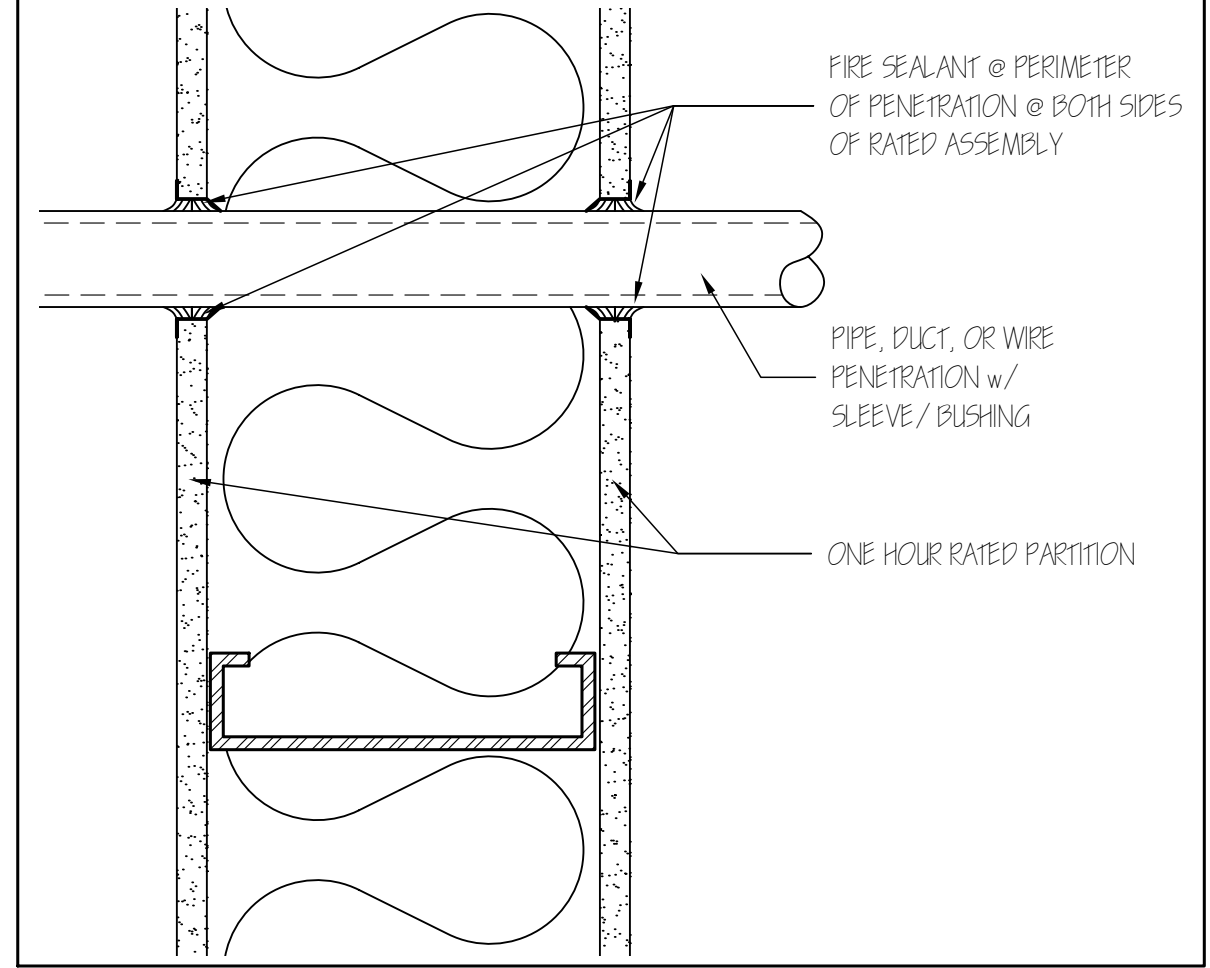
④ HANDRAIL EXTENSION @ BOTTOM N.T.S.



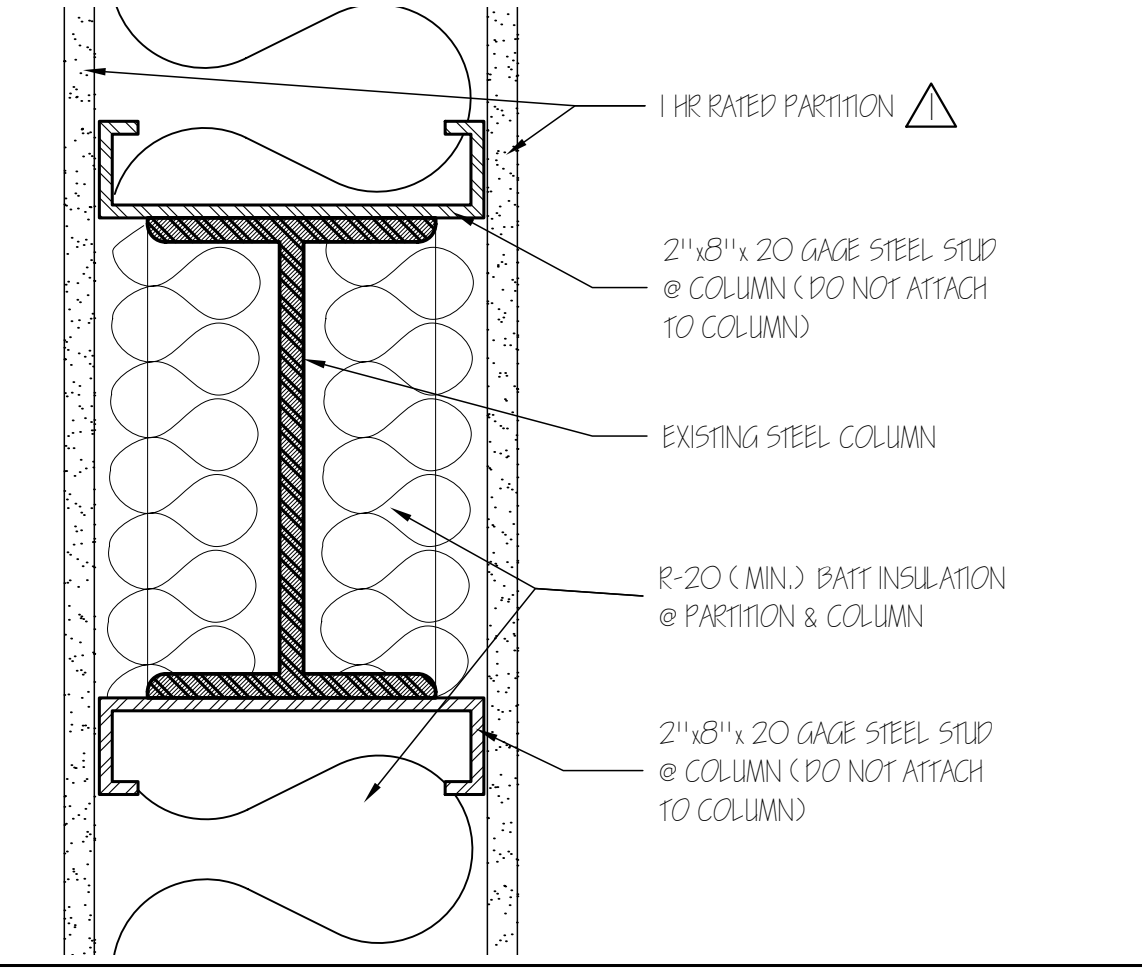
⑤ TYPICAL 1 HR RATED PARTITION @ 3'-1'-0"



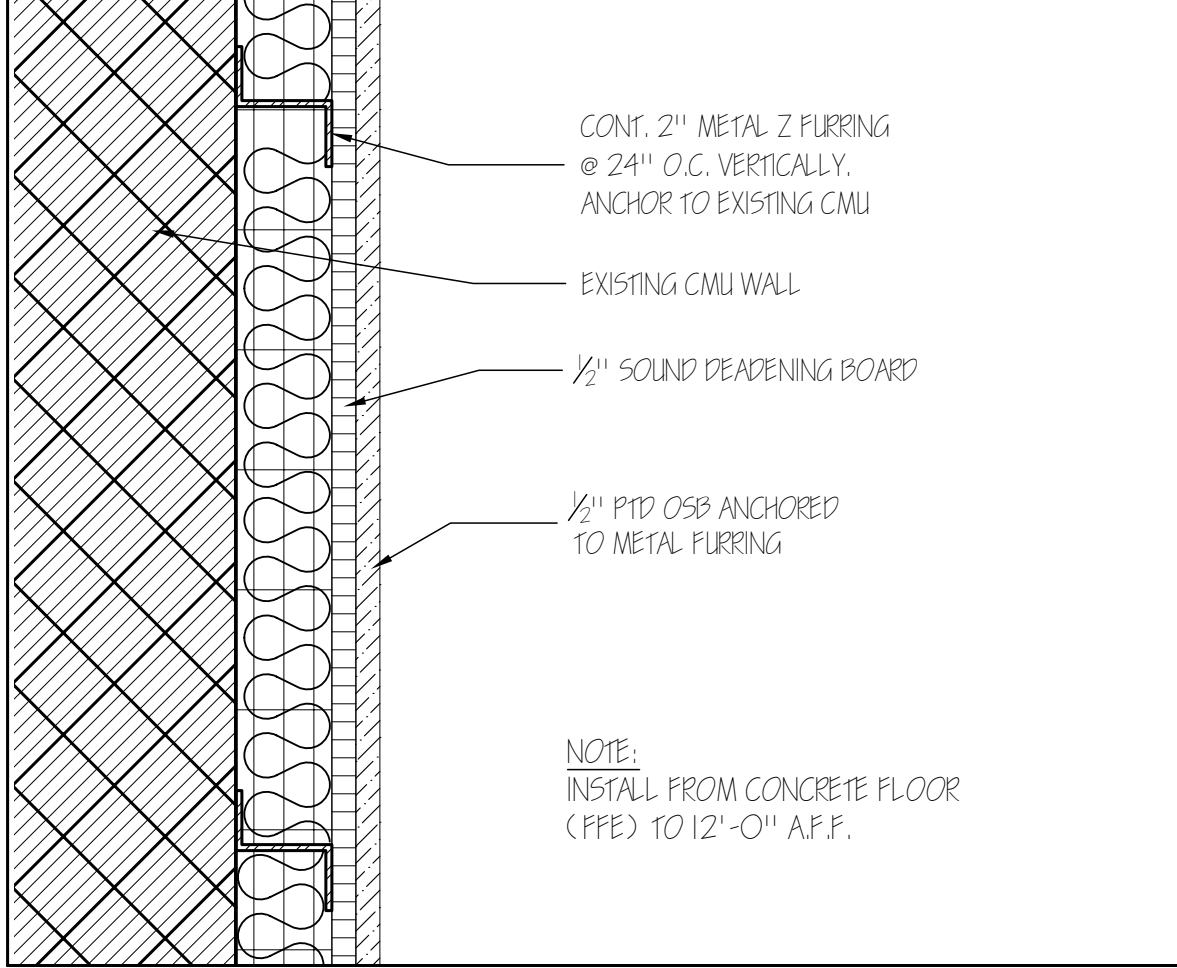
⑥ TYP. 1 HR RATED PARTITION @ DEFLECTION TRACK @ 3'-1'-0"



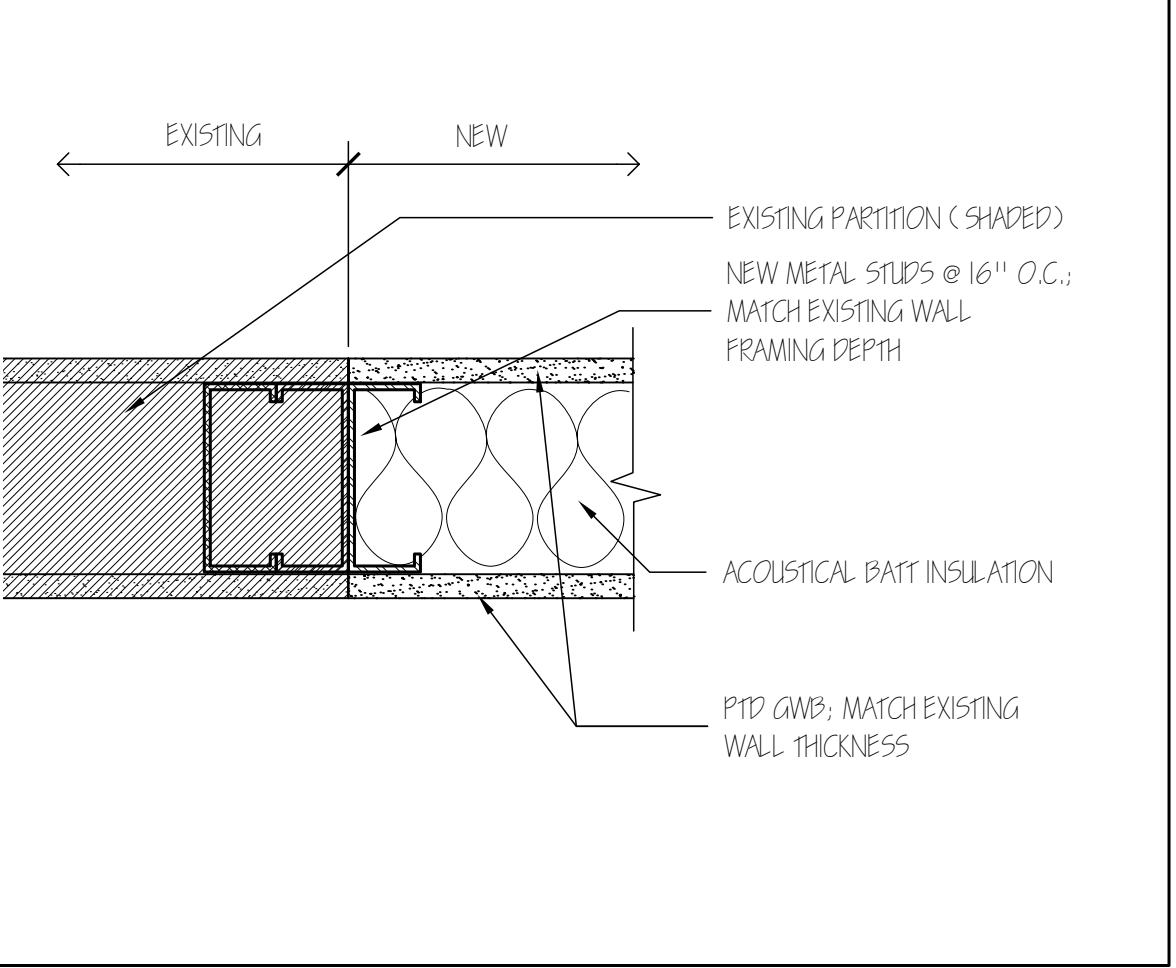
⑦ FIRE SEALANT @ PENETRATIONS 3'-1'-0"



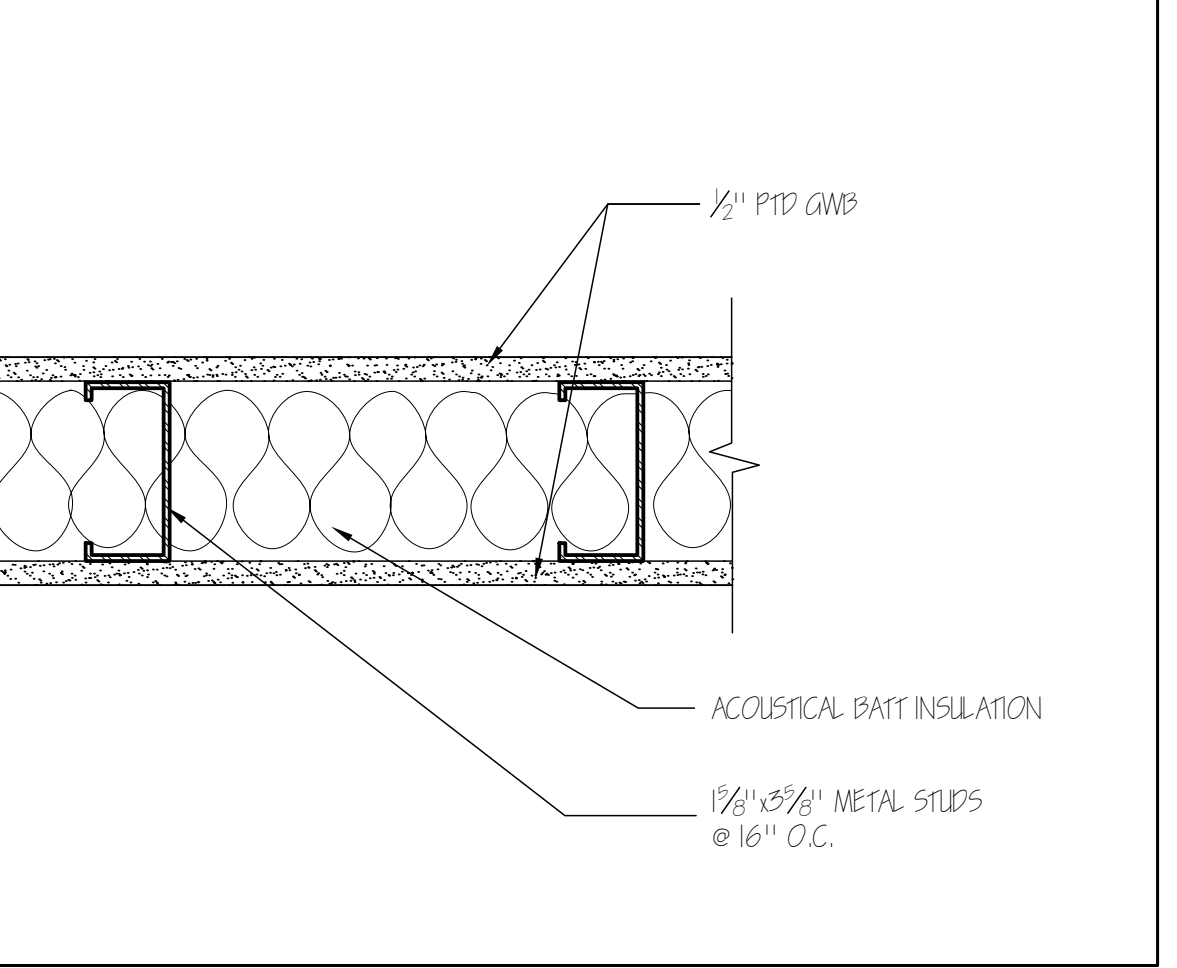
⑧ FIRE RATED PARTITION @ COLUMN 3'-1'-0"



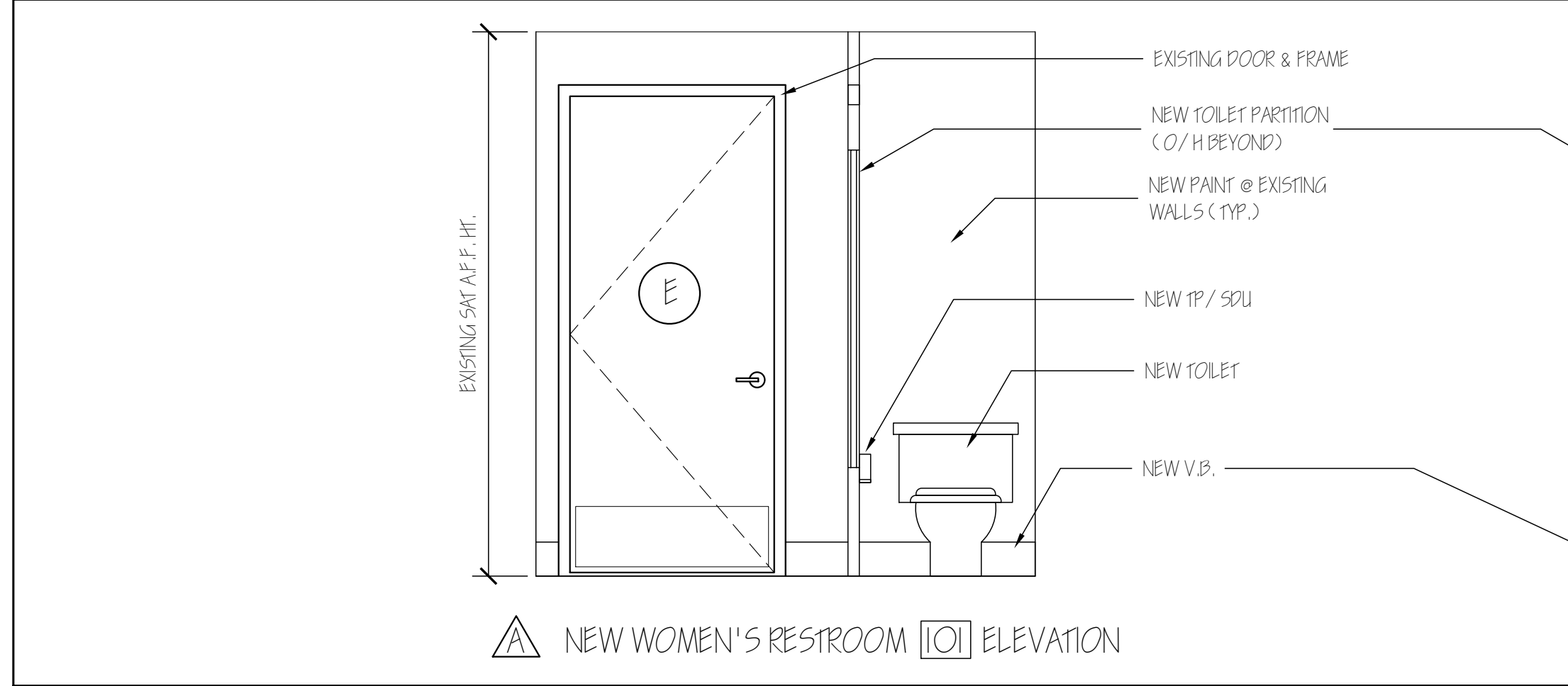
⑨ INTERIOR FURRED ACOUSTICAL WALL 3'-1'-0"



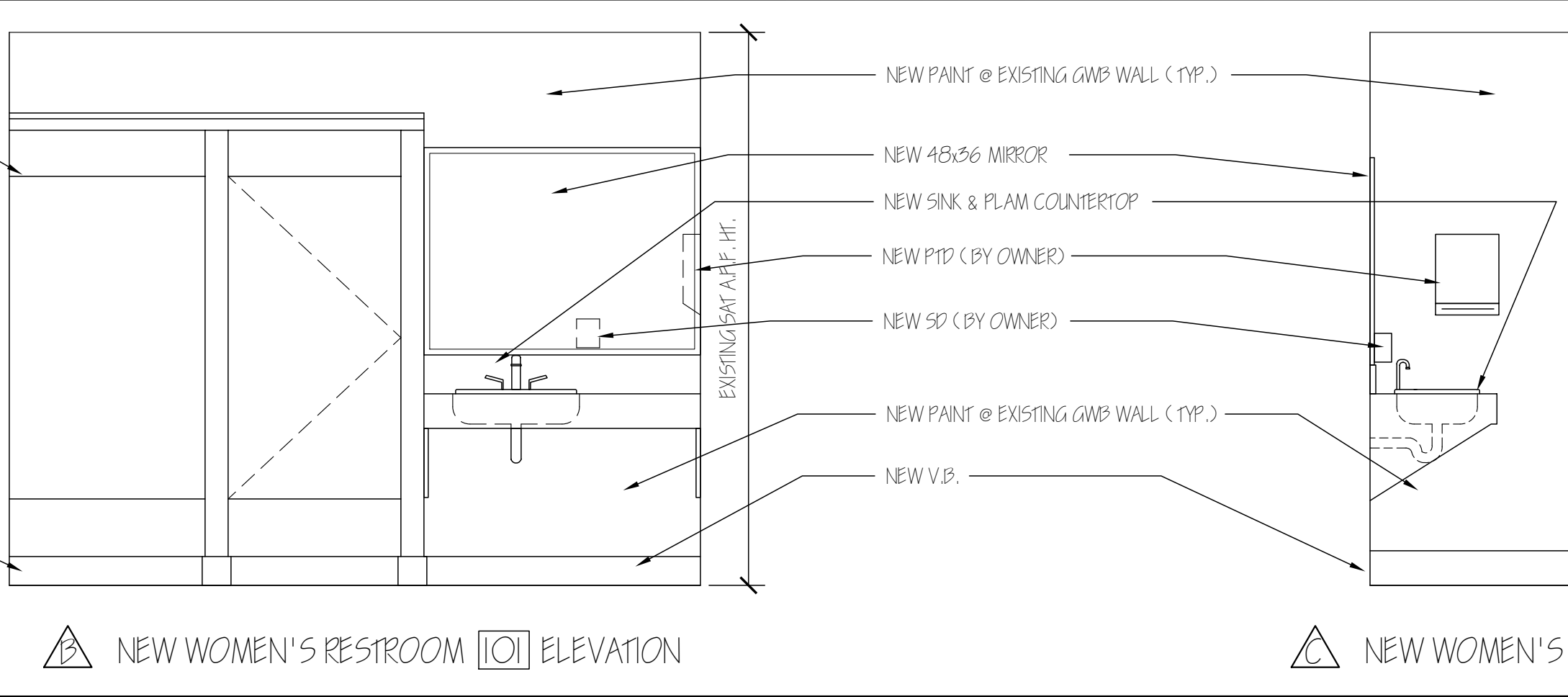
⑩ TYPICAL INFILL @ EXISTING PARTITION 3'-1'-0"



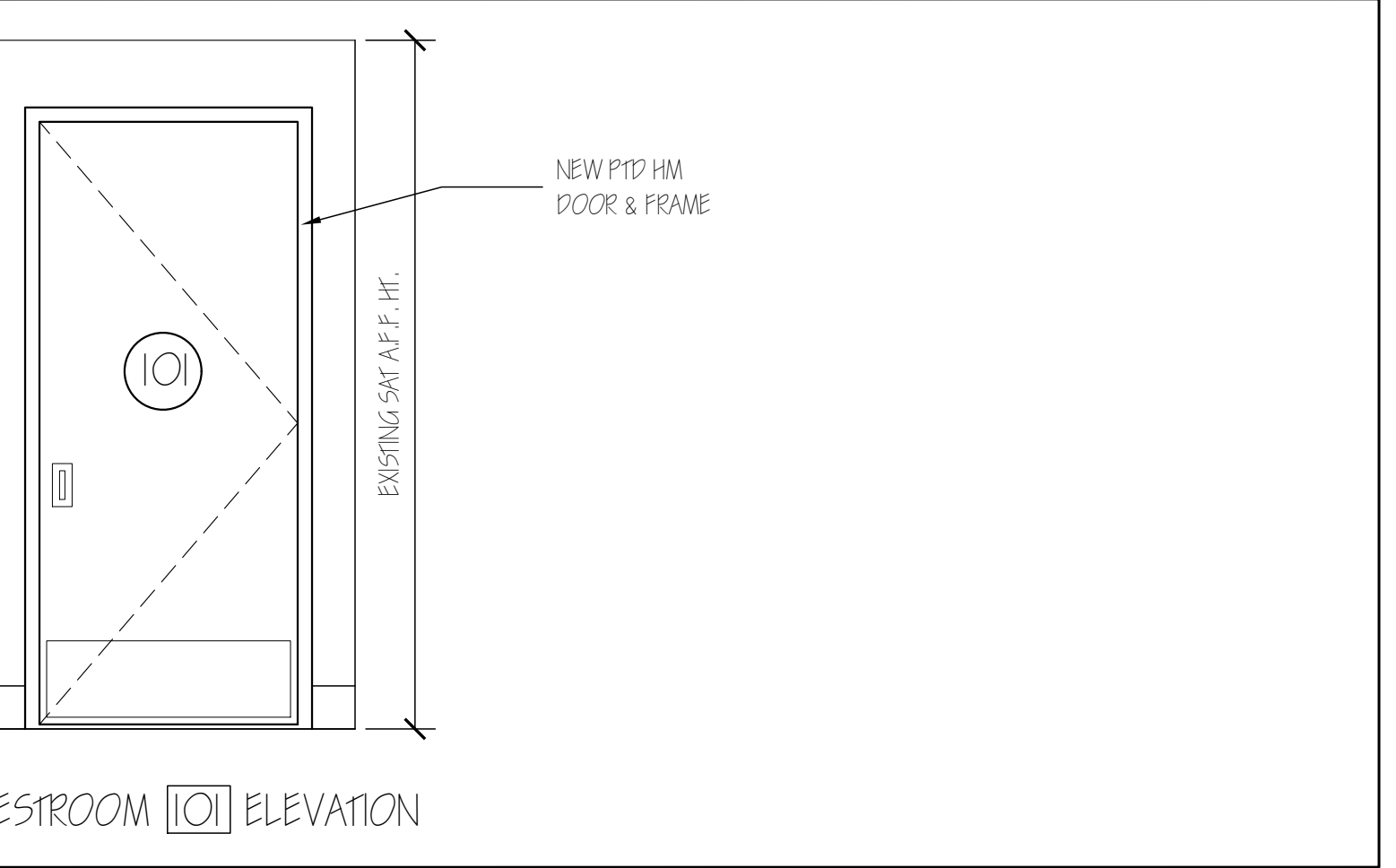
⑪ NON-RATED INTERIOR PARTITION 3'-1'-0"



⑫ NEW WOMEN'S RESTROOM [10] ELEVATION



⑬ NEW WOMEN'S RESTROOM [10] ELEVATION



⑭ NEW WOMEN'S RESTROOM [10] ELEVATION

⑫ WOMEN'S RESTROOM INTERIOR ELEVATIONS

1/2"=1'-0"

HAYSTACK ASSOCIATES

ARCHITECTURE  
INTERIOR DESIGN

P.O. BOX 6179 FALMOUTH, MAINE 04105

(207) 871-5900 (207) 871-9308

DRAWING TITLE: FINISHES

SCALE: NO SCALE

DATE: 19 Jul '10

DRAWN BY: MFH/mek

JOB NO.: 100630

DRAWING NO.: A-5

REVISIONS

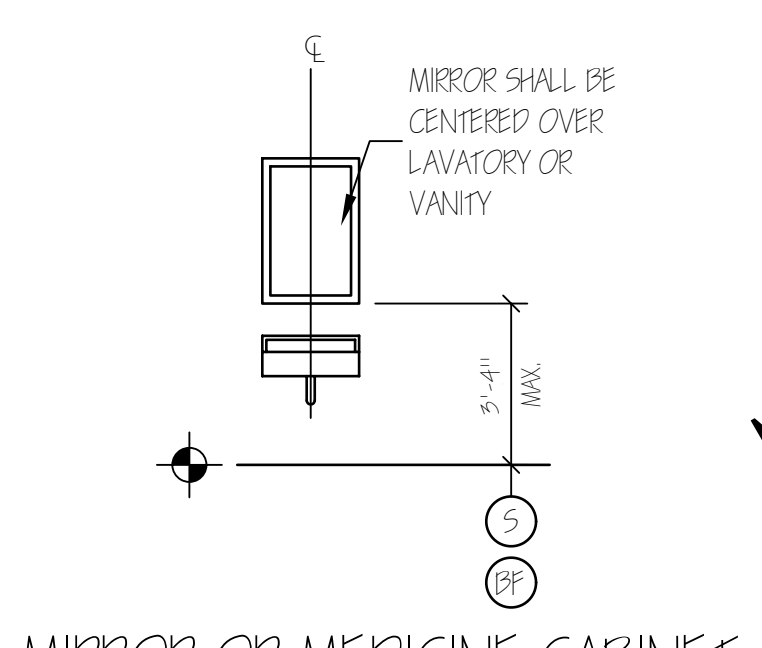
BARBER FOODS ALTERATIONS AT

56 MILLIKEN STREET PORTLAND, MAINE

JOB TITLE: JOHN

REPRODUCTION OR USE OF THIS DOCUMENT WITHOUT WRITTEN PERMISSION FROM GRANT HAYS ASSOCIATES IS PROHIBITED.

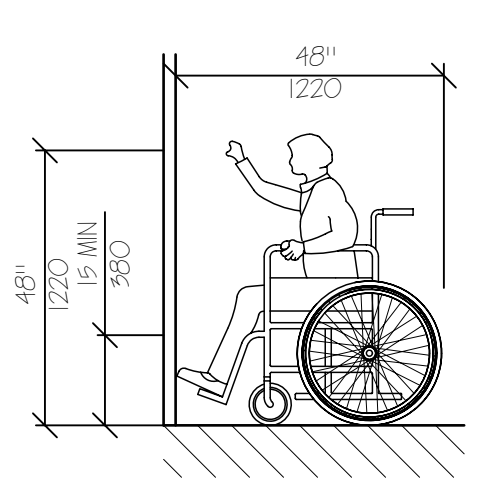




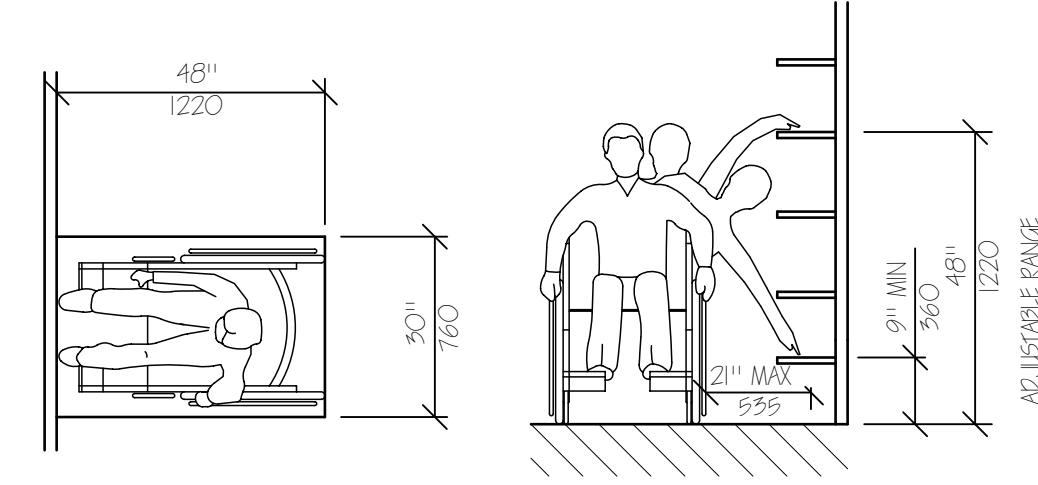
MIRROR OR MEDICINE CABINET  
NTS



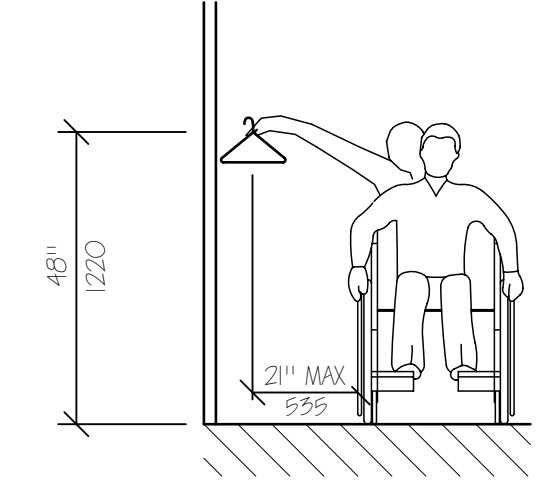
PUBLIC TELEPHONE  
NTS



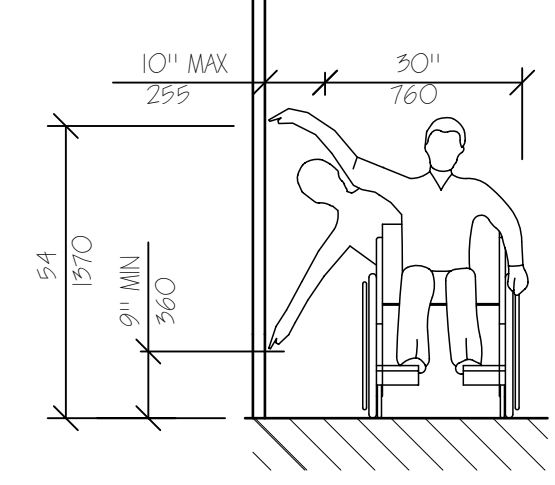
HIGH FORWARD REACH LIMIT  
NTS



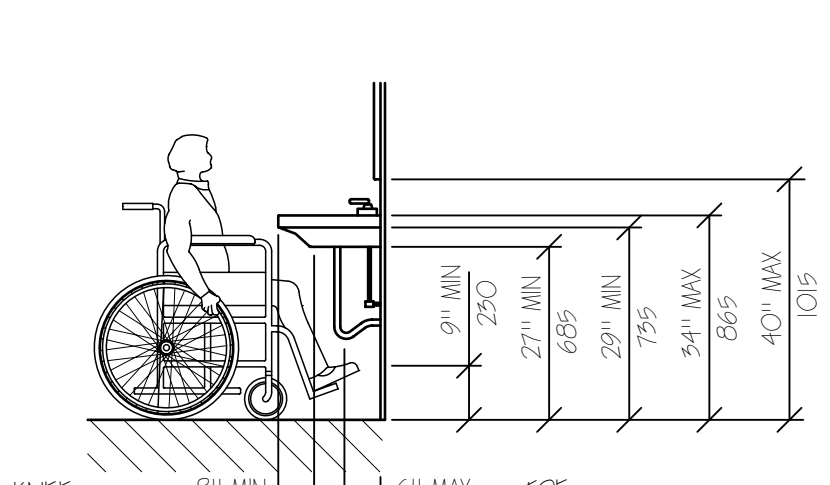
STORAGE SHELVES AND CLOSETS  
NTS



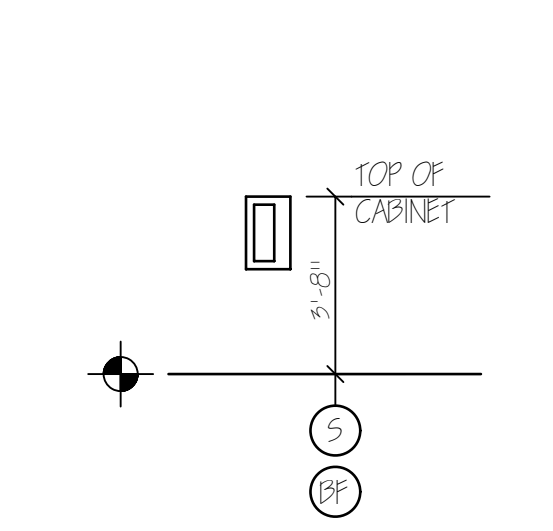
CLEAR FLOOR SPACE  
PARALLEL APPROACH  
NTS



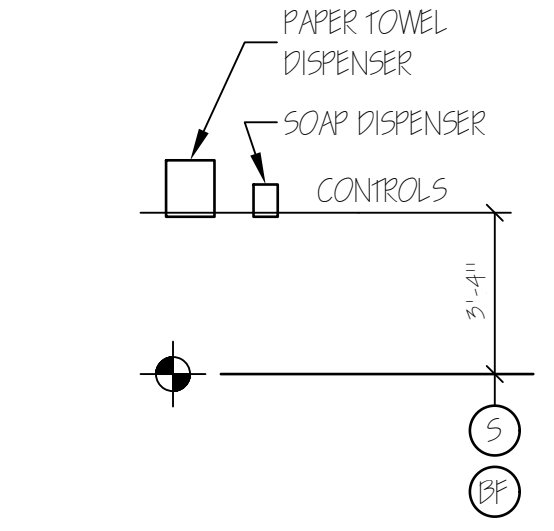
HIGH AND LOW  
SIDE REACH LIMITS  
NTS



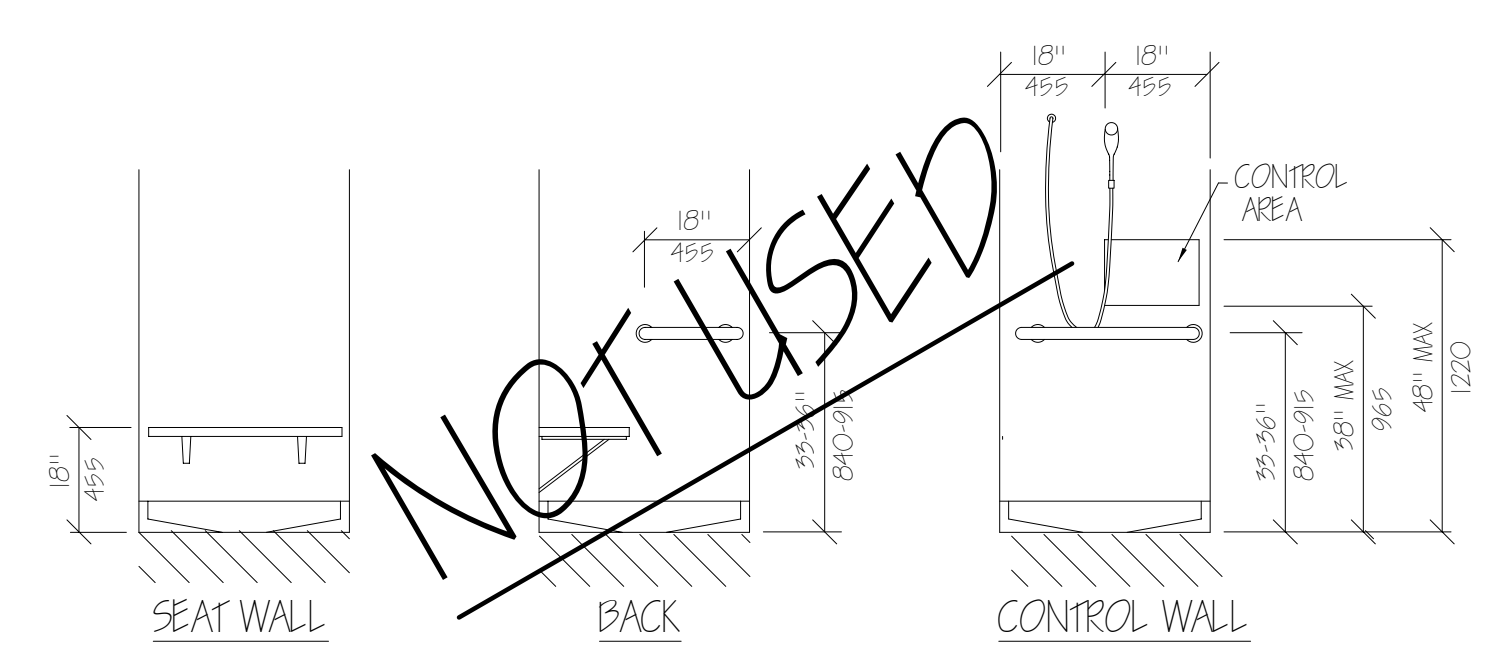
LAVATORY CLEARANCES  
NTS



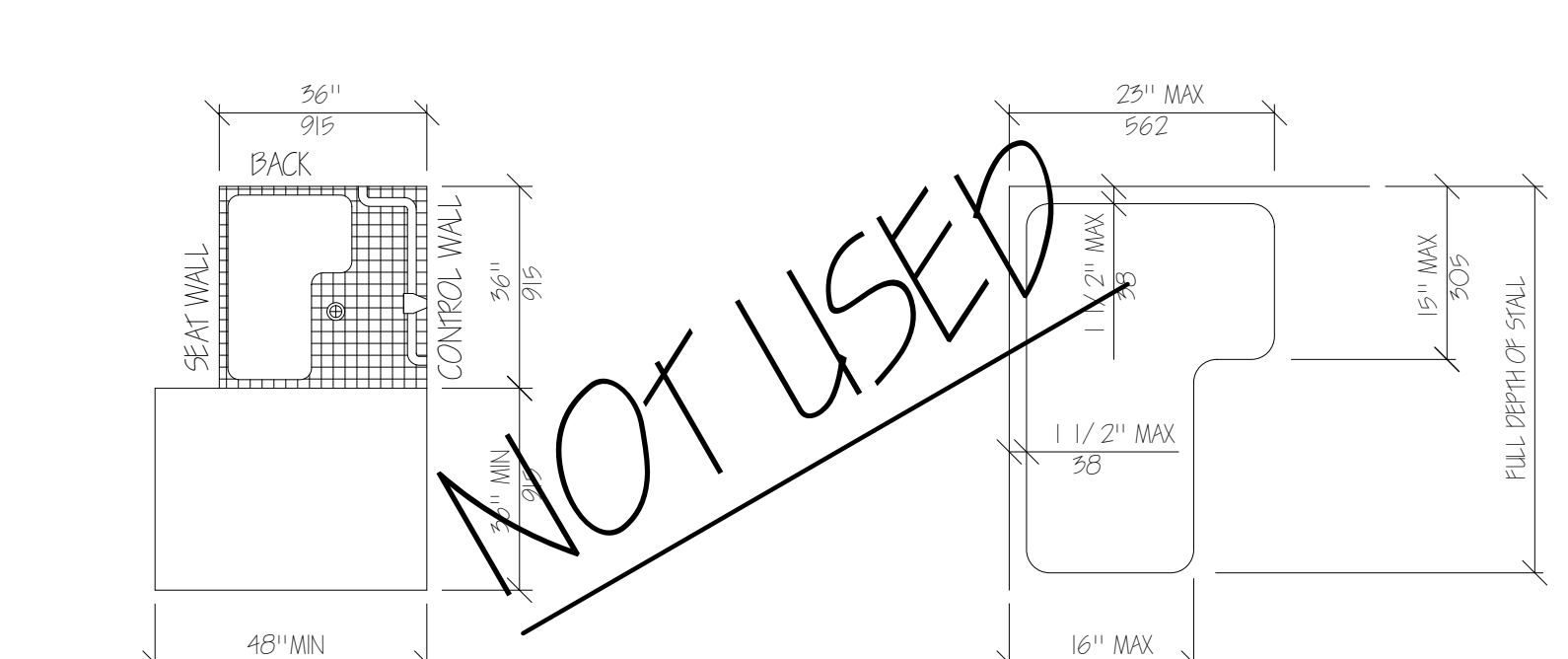
FIRE EXTINGUISHER  
CABINET (FEC)  
NTS



TOWEL & SOAP DISPENSERS  
NTS

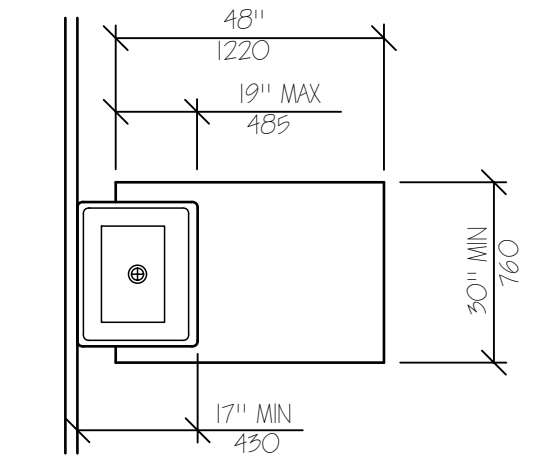


SHOWER SEAT ELEVATIONS  
NTS

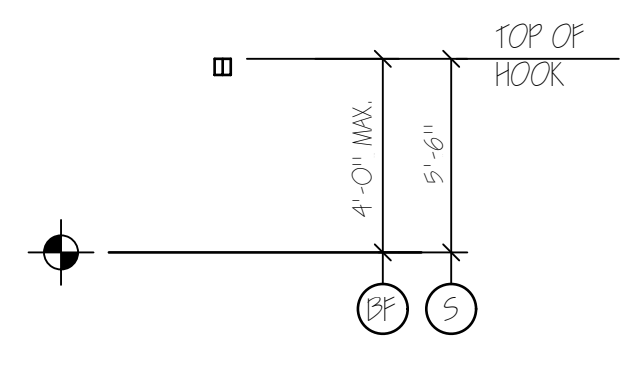


SHOWER STALL PLAN  
NTS

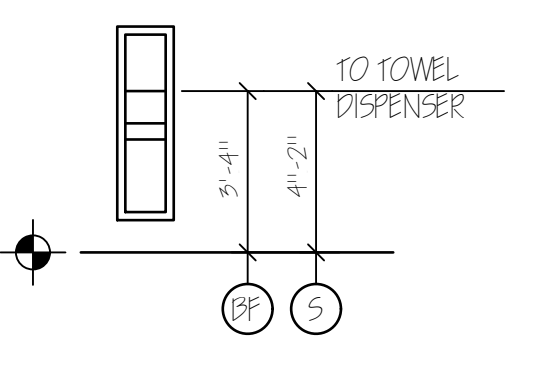
SHOWER SEAT DESIGN  
NTS



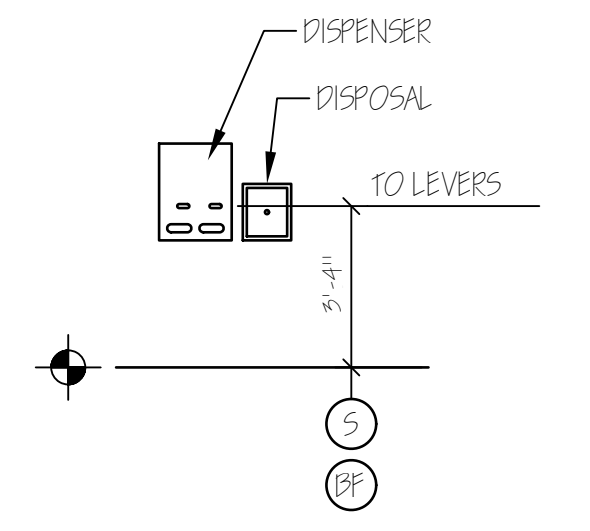
CLEAR FLOOR SPACE  
AT LAVATORIES  
NTS



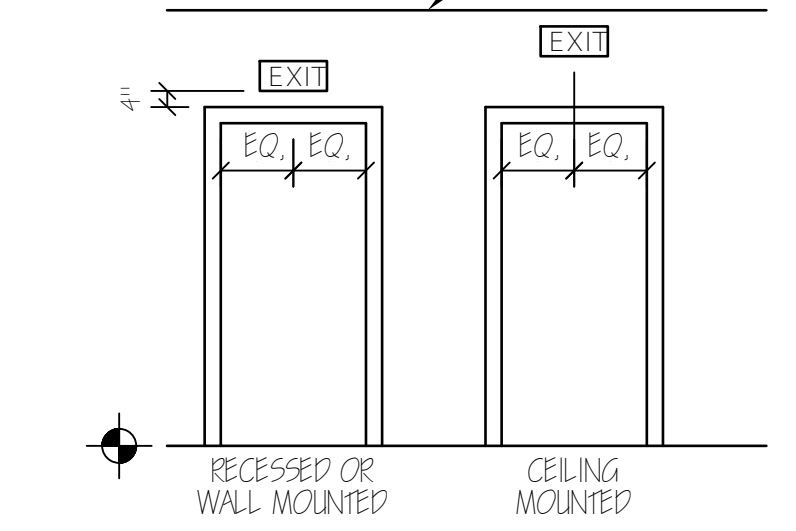
CLOTHES HOOK  
NTS



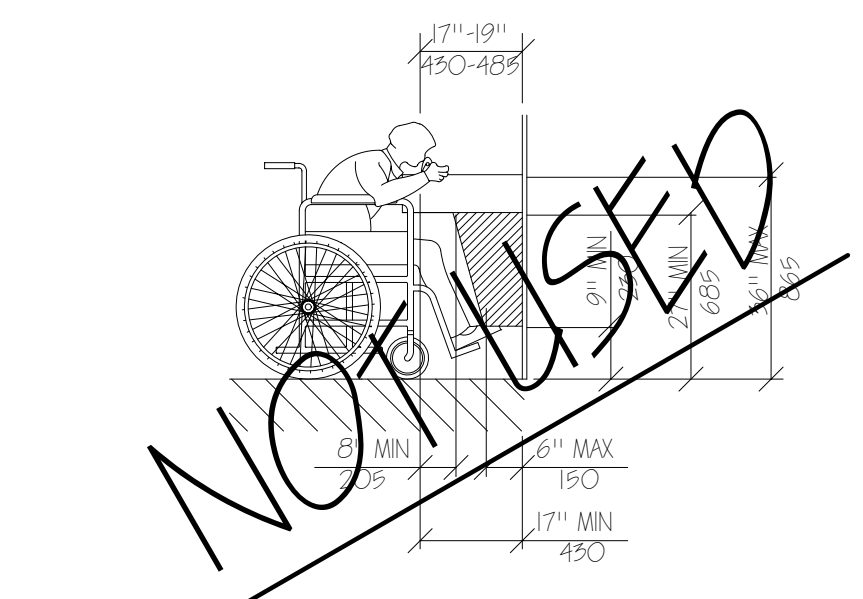
TOWEL DISPENSER  
DISPOSAL UNIT  
NTS



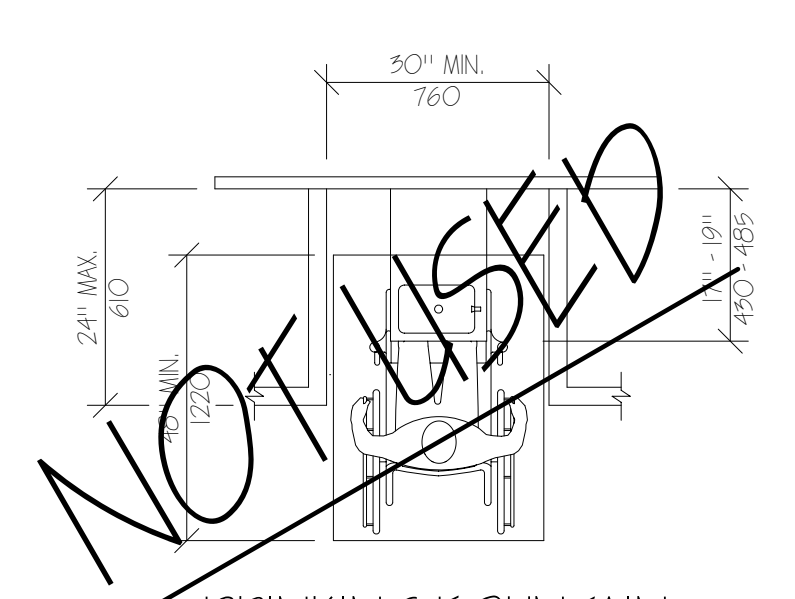
SANITARY NAPKIN  
DISPENSER & DISPOSAL  
NTS



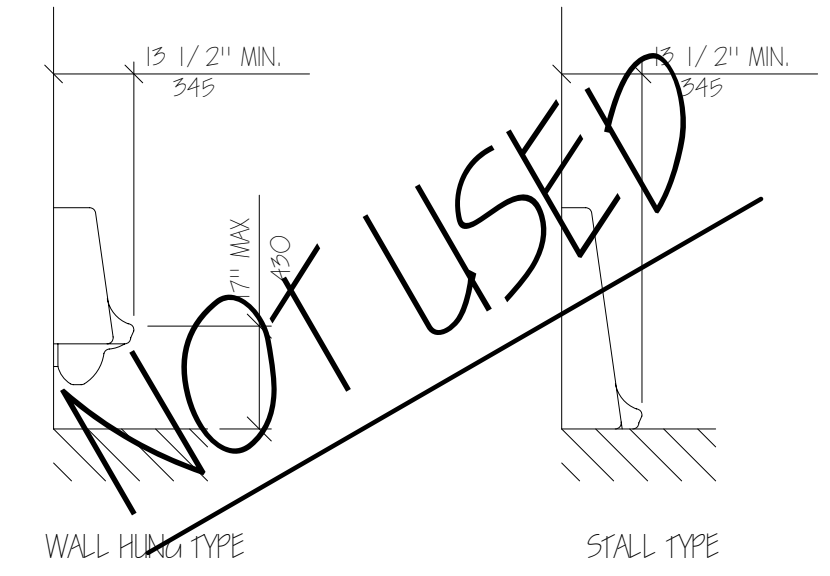
EXIT SIGNS  
TYPICAL UNLESS OTHERWISE NOTED  
NTS



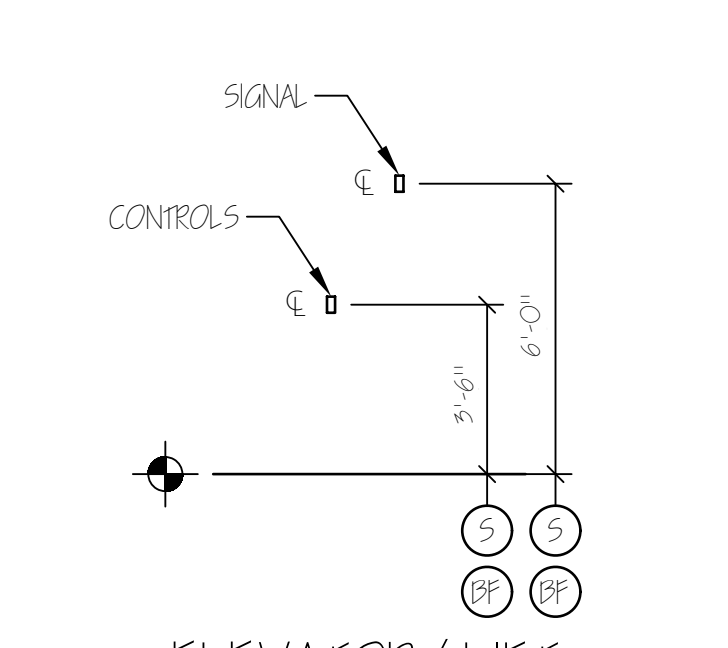
EQUIPMENT PERMITTED IN SHADED AREA  
DRINKING FOUNTAIN SPOUT HEIGHT  
AND KNEE CLEARANCE  
NTS



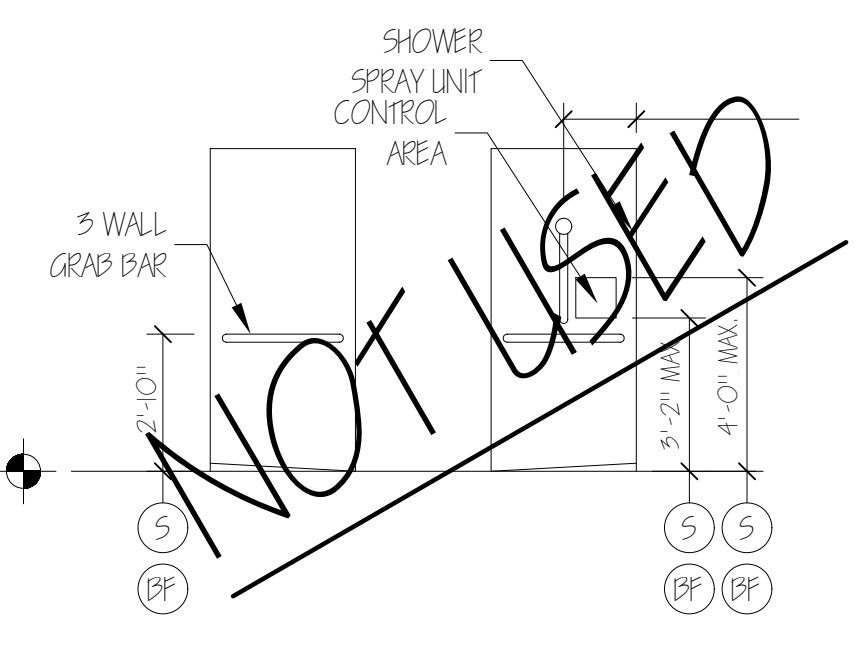
DRINKING FOUNTAIN  
NTS



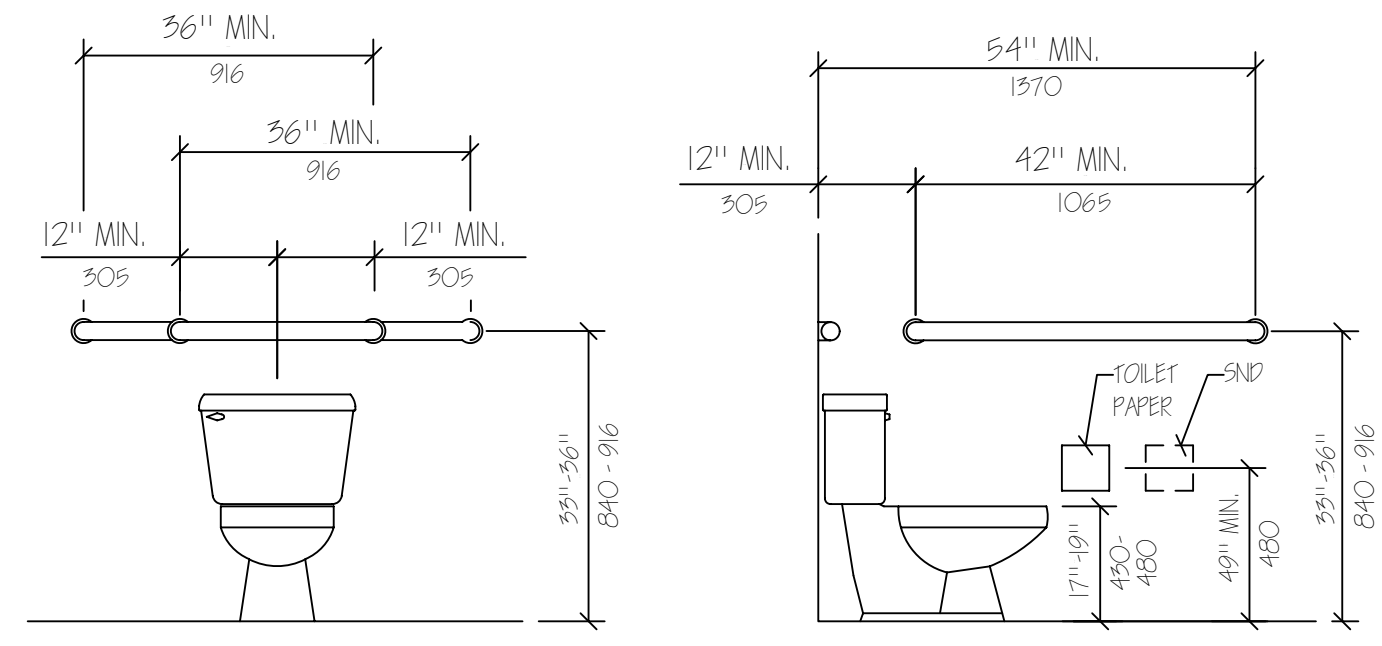
HEIGHT AND DEPTH OF URINALS  
NTS



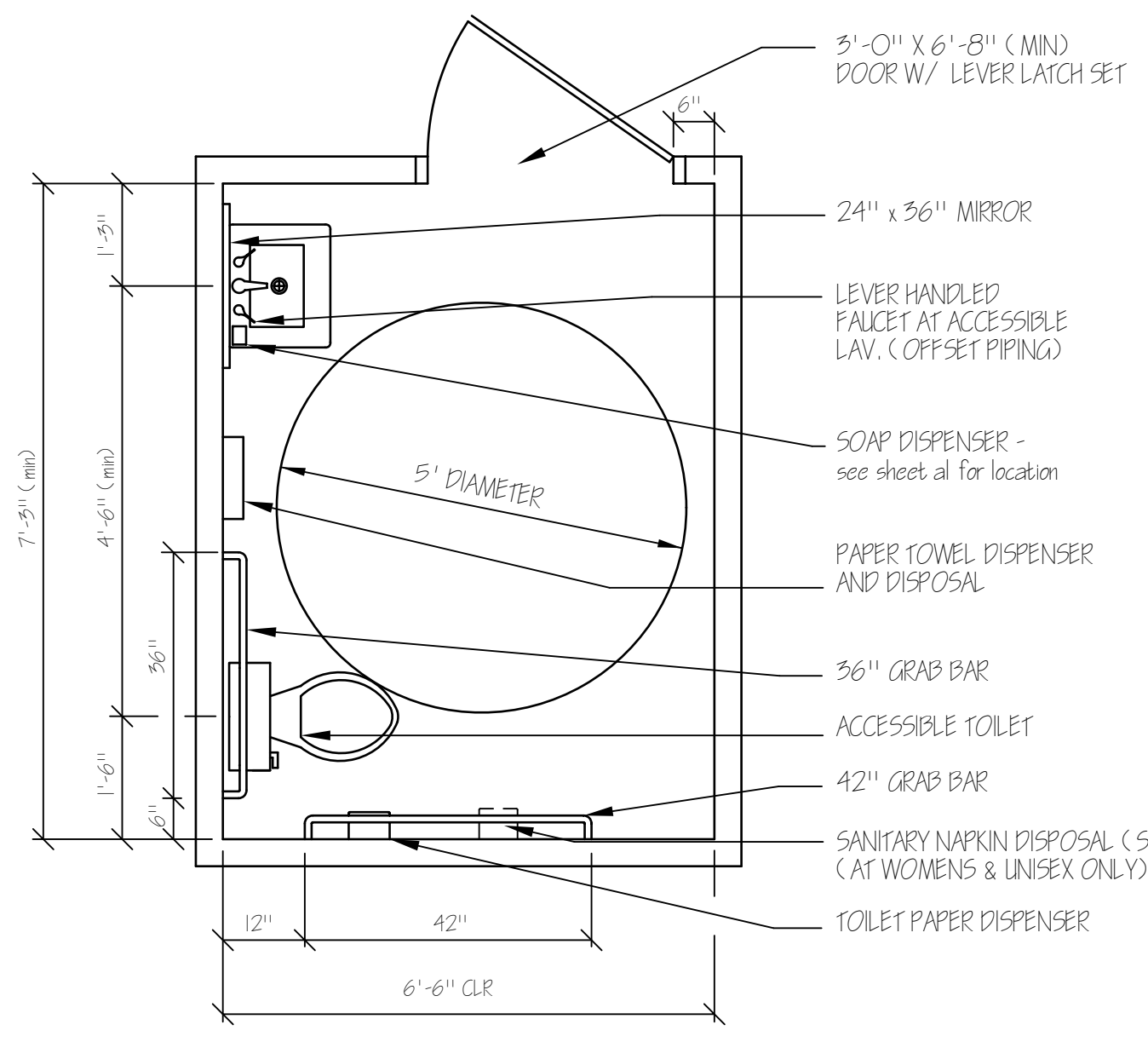
ELEVATOR/LIFT  
CONTROLS & SIGNALS  
NTS



BARrier FREE SHOWER  
NTS



GRAB BARS AT WATER CLOSETS  
NTS



TYPICAL ACCESSORIES  
NTS

- LEGEND**
- (S) STANDARD MOUNTING HEIGHT
  - (PF) BARRIER FREE ADULT MOUNTING HEIGHT
  - FINISH FLOOR LINE

**NOTE**  
MOUNT ALL FIXTURES AT STANDARD MOUNTING HEIGHT UNLESS INDICATED ON PLAN BY A & B SYMBOL. A & B SYMBOL AT ANY ROOM SHALL INCLUDE ONE OF ANY FIXTURE AND ACCESSORY WITHIN THE ROOM.

**ACCESSIBILITY ACCESSORY MOUNTING HEIGHTS**

GRAB BARS	33"-36"
TOILET PAPER HOLDER	19" MIN
TOWEL BAR/PAPER TOWEL DISPENSER	48" MAX
BUILT IN PAPER TOWEL DISPENSER	48" MAX
SOAP DISH/DISPENSER AT WALL	48" MAX
SANITARY NAPKIN DISPENSER	48" MAX
SANITARY NAPKIN DISPOSAL	19" MAX
MIRROR (OPTIONAL)	40" MAX
SHELVES/STORAGE	48" MAX
ELECTRICAL SWITCHES/OUTLETS	48" MAX
COAT HOOKS/RODS	48" MAX
SIGNAGE (TO BRaille COMPONENT)	60" MAX

**ACCESSIBILITY GENERAL NOTES**

1. DOORWAYS SHALL HAVE A MINIMUM CLEAR WIDTH OF 32" WITH THE DOOR OPEN 90 DEGREES, MEASURED BETWEEN THE FACE OF THE DOOR AND THE OPPOSITE STOP.
2. ALL DOORS SHALL HAVE LEVER HANDLE HARDWARE, EXCEPT AT SECURED STORAGE ROOMS, MECHANICAL ROOMS, AND ELEVATOR MACHINE ROOMS.
3. ALL CLOSERS SHALL BE SLIP PULL MAXIMUM AT DOORS EQUIPPED WITH LEVER HANDLE HARDWARE.
4. ALL DOORS WITH CLOSERS SHALL HAVE 18" CLEAR DISTANCE FROM THE LATCHSIDE OF THE OPENING TO ANY ADJACENT WALL OR OBSTRUCTION ON THE PULL SIDE OF THE OPENING.
5. ALL DOORS WITH CLOSERS SHALL HAVE 12" CLEAR DISTANCE FROM THE LATCHSIDE OF THE OPENING TO ANY ADJACENT WALL OR OBSTRUCTION ON THE PUSH SIDE OF THE OPENING.
6. ALL SIGNAGE SHALL BE MOUNTED 60" AFF TO BRaille COMPONENT AT LATCH-SIDE WALL OF DOORS AND OPENINGS.
7. REFER TO OWNER'S INTERIOR ARCHITECTURAL PACKAGE (UNTHINK DESIGNS) FOR ACTUAL ACCESSORIES SELECTIONS, LOCATIONS & MOUNTING HEIGHTS.

ELECTRICAL & FIRE PROTECTION DEVICES  
TYPICAL UNLESS NOTED OTHERWISE  
NTS

