

REFRIGERATION EQUIPMENT DEMOLITION PLAN
SCALE: 1/16" = 1'-0"

DESIGNATES UNITS TO BE DEMOLISHED

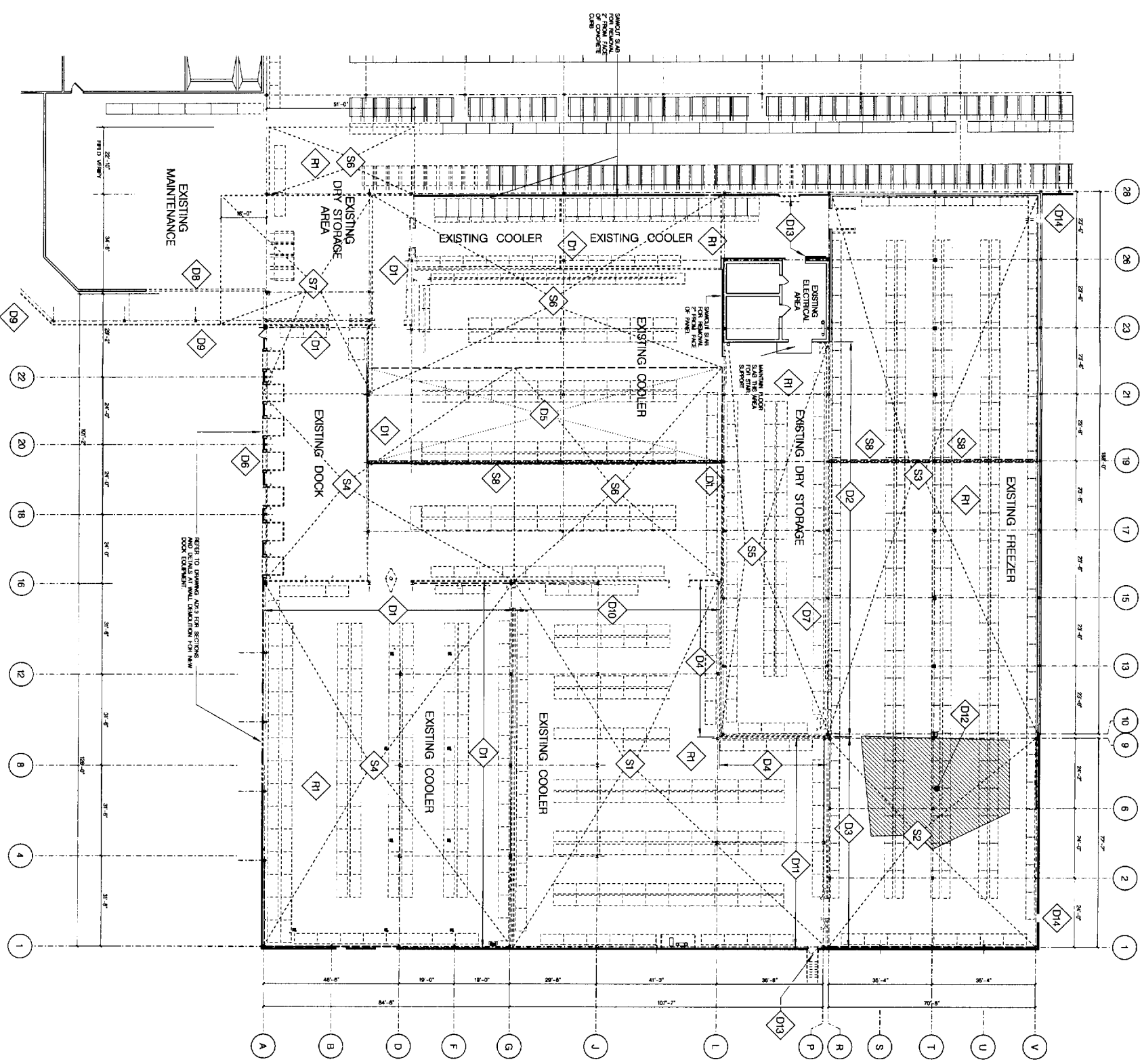
RD. DRAWING 0412	DATE: 10-09-04 DESIGNED BY:	FOOD TECH <small>PLANNERS • ENGINEERS • BUILDERS</small> FOOD TECH STRUCTURES, LLC 2100 WASHINGTON STREET HANOVER, MA 02339 Tel: (781) 261-9770 Fax: (781) 281-9701	REFRIGERATION EQUIPMENT DEMOLITION PLAN	Warehouse and Office Renovations for BARBER FOODS Portland, Maine		ACTION: 11-1704 DATE:	DESCRIPTION: RELEASED FOR BID
	DRAWN BY: MN CHECKED BY:		ACTION:	DATE:		DESCRIPTION:	

CONCRETE AND GROUT FILLERS ASIDE TO ELEVATION - 9'-7"
CONCRETE AND GROUT COVERS DOOR AND WINDOW ASIDE TO ELEVATION - 9'-5"
CONCRETE AND GROUT FLOOR CHANGES / REMOVAL ASIDE TO ELEVATION - 9'-5"

KEY NOTES

- R1 INTERIOR WALLS TO BE REMOVED FOR REPAIR OR STORM DAMAGE. REMOVE WITH PANEL COPS AT ROOF RAIL COPS AT BASE TO BE REMOVED.
- D1 INTERIOR WALLS TO BE REMOVED. REMOVE WITH PANEL COPS AT ROOF RAIL COPS AT BASE TO BE REMOVED.
- D2 INTERIOR WALLS TO BE REMOVED. REMOVE WITH PANEL COPS AT ROOF RAIL COPS AT BASE TO BE REMOVED.
- D3 INTERIOR WALLS TO BE REMOVED. REMOVE WITH PANEL COPS AT ROOF RAIL COPS AT BASE TO BE REMOVED.
- D4 INTERIOR WALLS TO BE REMOVED. REMOVE WITH PANEL COPS AT ROOF RAIL COPS AT BASE TO BE REMOVED.
- D5 AREA OF INTERIOR WALLS TO BE REMOVED. REMOVE WITH PANEL COPS AT ROOF RAIL COPS AT BASE TO BE REMOVED.
- D6 ROOF FLOORING TO BE REMOVED. REMOVE WITH PANEL COPS AT ROOF RAIL COPS AT BASE TO BE REMOVED.
- D7 INTERIOR WALLS TO BE REMOVED. REMOVE WITH PANEL COPS AT ROOF RAIL COPS AT BASE TO BE REMOVED.
- D8 INTERIOR WALLS TO BE REMOVED. REMOVE WITH PANEL COPS AT ROOF RAIL COPS AT BASE TO BE REMOVED.
- D9 INTERIOR WALLS TO BE REMOVED. REMOVE WITH PANEL COPS AT ROOF RAIL COPS AT BASE TO BE REMOVED.
- D10 INTERIOR WALLS TO BE REMOVED. REMOVE WITH PANEL COPS AT ROOF RAIL COPS AT BASE TO BE REMOVED.
- D11 INTERIOR WALLS TO BE REMOVED. REMOVE WITH PANEL COPS AT ROOF RAIL COPS AT BASE TO BE REMOVED.
- D12 INTERIOR WALLS TO BE REMOVED. REMOVE WITH PANEL COPS AT ROOF RAIL COPS AT BASE TO BE REMOVED.
- D13 INTERIOR WALLS TO BE REMOVED. REMOVE WITH PANEL COPS AT ROOF RAIL COPS AT BASE TO BE REMOVED.
- D14 INTERIOR WALLS TO BE REMOVED. REMOVE WITH PANEL COPS AT ROOF RAIL COPS AT BASE TO BE REMOVED.
- S1 REPAIR CONCRETE CURBS TO BE REMOVED. REMOVE WITH PANEL COPS AT ROOF RAIL COPS AT BASE TO BE REMOVED.
- S2 REPAIR CONCRETE CURBS TO BE REMOVED. REMOVE WITH PANEL COPS AT ROOF RAIL COPS AT BASE TO BE REMOVED.
- S3 REPAIR CONCRETE CURBS TO BE REMOVED. REMOVE WITH PANEL COPS AT ROOF RAIL COPS AT BASE TO BE REMOVED.
- S4 CONCRETE CURBS TO BE REMOVED. REMOVE WITH PANEL COPS AT ROOF RAIL COPS AT BASE TO BE REMOVED.
- S5 CONCRETE CURBS TO BE REMOVED. REMOVE WITH PANEL COPS AT ROOF RAIL COPS AT BASE TO BE REMOVED.
- S6 CONCRETE CURBS TO BE REMOVED. REMOVE WITH PANEL COPS AT ROOF RAIL COPS AT BASE TO BE REMOVED.
- S7 CONCRETE CURBS TO BE REMOVED. REMOVE WITH PANEL COPS AT ROOF RAIL COPS AT BASE TO BE REMOVED.
- S8 CONCRETE CURBS TO BE REMOVED. REMOVE WITH PANEL COPS AT ROOF RAIL COPS AT BASE TO BE REMOVED.

SLAB REMOVAL NOTES



GENERAL DEMOLITION NOTES:
REFER TO DRAWING A212 AND A213 FOR
REMOVAL OF EXISTING MAINTENANCE
AREA.
REFER TO STRUCTURAL DRAWINGS FOR
ADDITIONAL DEMOLITION INFORMATION.
REMOVE WITH PANEL COPS AT ROOF RAIL
COPS AT BASE TO BE REMOVED.

AD1.1 DRAWING NO.	DATE: 11-17-04 DESIGNED BY: fts DRAWN BY: pcS,pc CHECKED BY: dsw	PLANNERS • ENGINEERS • BUILDERS FOOD TECH FOOD TECH STRUCTURES, LLC 2100 WASHINGTON STREET HANOVER, MA 02339 Tel: (781) 261-9700 Fax: (781) 261-9701	DEMOLITION FLOOR PLAN: WAREHOUSE RENOVATIONS	Warehouse and Office Renovations for: BARBER FOODS Portland, Maine	ACTION: A DATE: 11-17-04 DESCRIPTION: RELEASED FOR BID

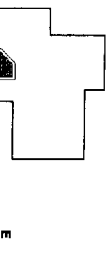
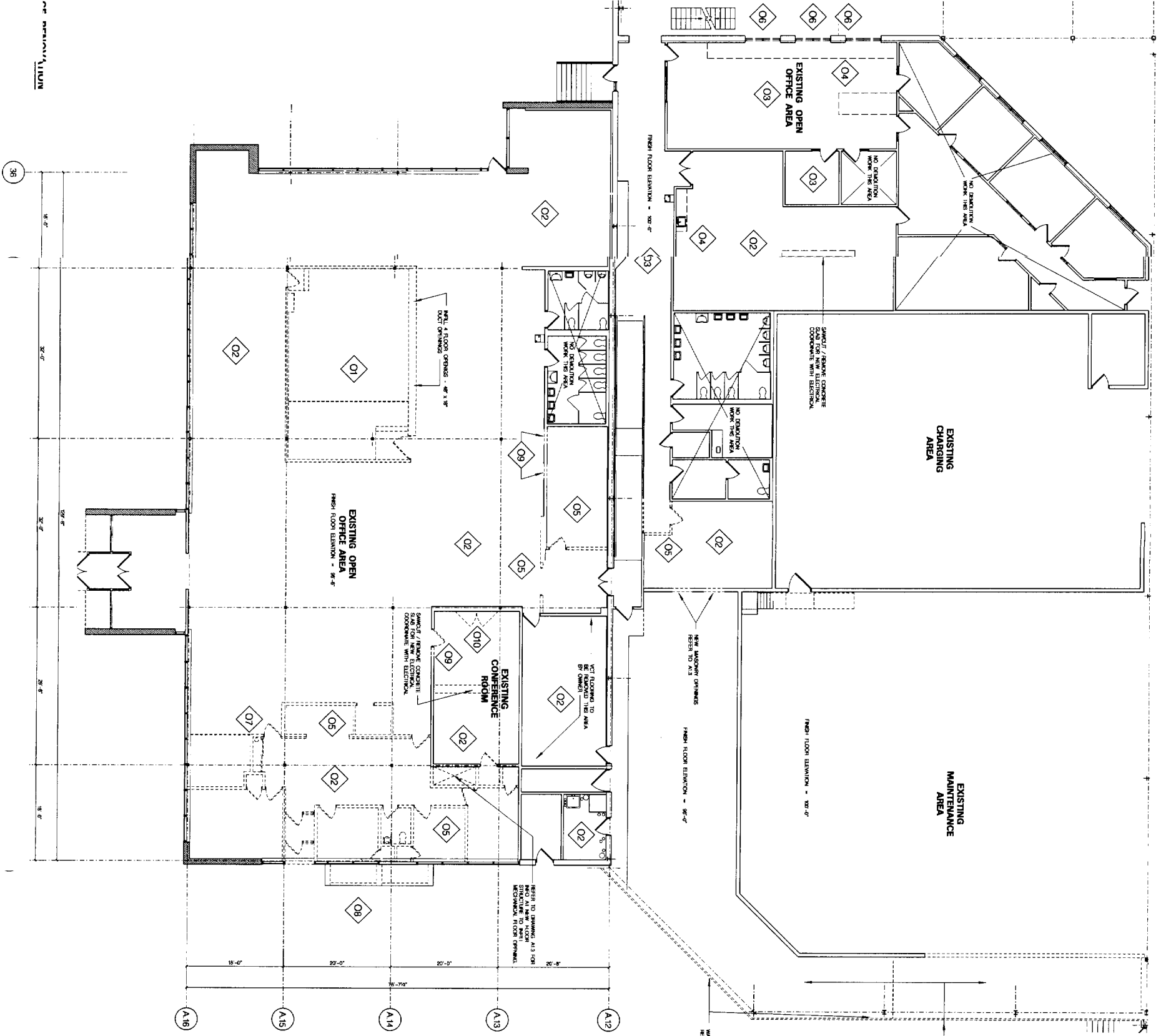
GENERAL DEMOLITION NOTES

1. EXISTING CARPET FLOORING TO BE REMOVED AT ALL AREAS
2. WAREHOUSE REFRIGERATION UNIT FLOORING TO BE REMOVED AT ALL AREAS TO BE DEMOLISHED
3. REFER TO MECHANICAL, PLUMBING, P.E. AND ELECTRICAL DRAWINGS FOR ADDITIONAL DEMOLITION INFORMATION
4. ALL AREAS ARE TO BE CLEANED - FLOORS, WALLS, CEILING, ETC. FROM TO INSTALLATION OF NEW WORK
5. REFER TO DRAWING NOTATION DEMOLITION IN ACCORDANCE AREAS

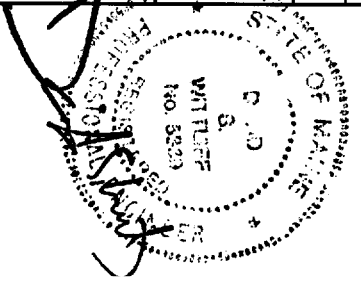
KEY NOTES

- 01. COMPUTER ROOM TO BE REMOVED COMPLETELY - FLOORING, WALLS, CEILING, ETC.
- 02. CEILING SYSTEM, TIES AND SUSPENSION SYSTEM TO BE REMOVED THESE AREAS - COORDINATE WITH MECHANICAL, P.E. AND ELECTRICAL
- 03. CEILING TIES TO BE REPLACED THESE AREAS - SUSPENSION SYSTEM TO REMAIN CLEAN OVER FROM TO NEW WORK - COORDINATE WITH MECHANICAL, P.E. AND ELECTRICAL
- 04. CASINGWORK TO BE REMOVED
- 05. WALLS, FINISH FLOORING, CEILING TO BE REMOVED SHOWN BOITERS
- 06. WINDOW UNITS TO BE REMOVED - REFER TO A12 FOR NEW CONSTRUCTION
- 07. RAW TO BE REMOVED - REFER TO PLUMBING DRAWINGS SHOWING AND REMOVE FLOOR SLAB FOR NEW FRAMING
- 08. REMOVE PLASTER BRICK WALLS - CEILING ETC. WALL OPENINGS BELOW W.P.F. WALL - ALL FINS WITH FINISH OVER TEL - REFER TO A13
- 09. NEW WALL OPENINGS - REFER TO A13
- 010. REFRIGERATION UNIT REMOVED AND COORDINATE WITH MECHANICAL

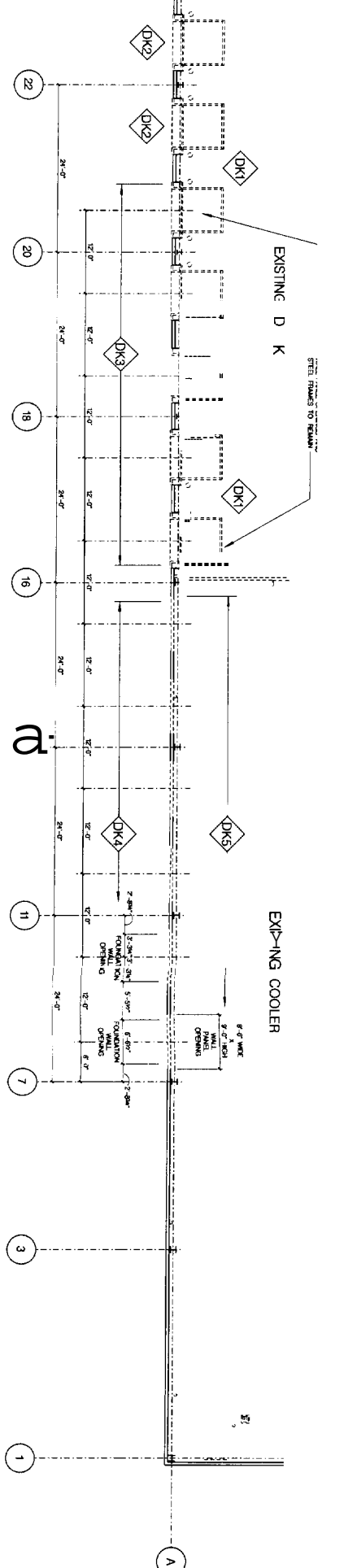
DEMOLITION FLOOR PLAN: OFFICE RENOVATIONS
SCALE: 1/4" = 1'-0"
FINISH FLOOR ELEVATION: 100'-0"
FROM STREET LEVEL: 100'-0"
FROM STREET LEVEL: 100'-0"



DATE: 11-17-04 DESIGNED BY: [Signature] DRAWN BY: ps/adc CHECKED BY: [Signature]	FOOD TECH PLANNERS • ENGINEERS • BUILDERS FOOD TECH STRUCTURES, LLC 2100 WASHINGTON STREET HANOVER, MA 02388 TEL: (781) 281-8700 FAX: (781) 281-8701	DEMOLITION FLOOR PLAN: OFFICE RENOVATIONS	Warehouse and Office Renovations for: BARBER FOODS Portland, Maine	A	11-17-04	RELEASED FOR BID
				ACTION	DATE	DESCRIPTION

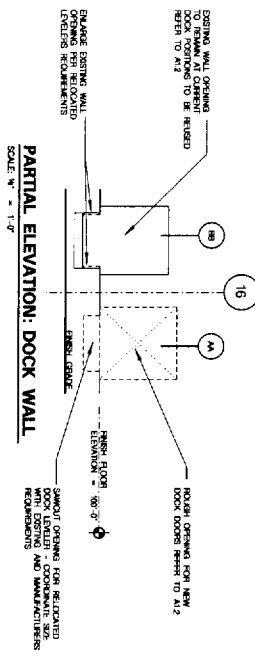


AD1.2
0412

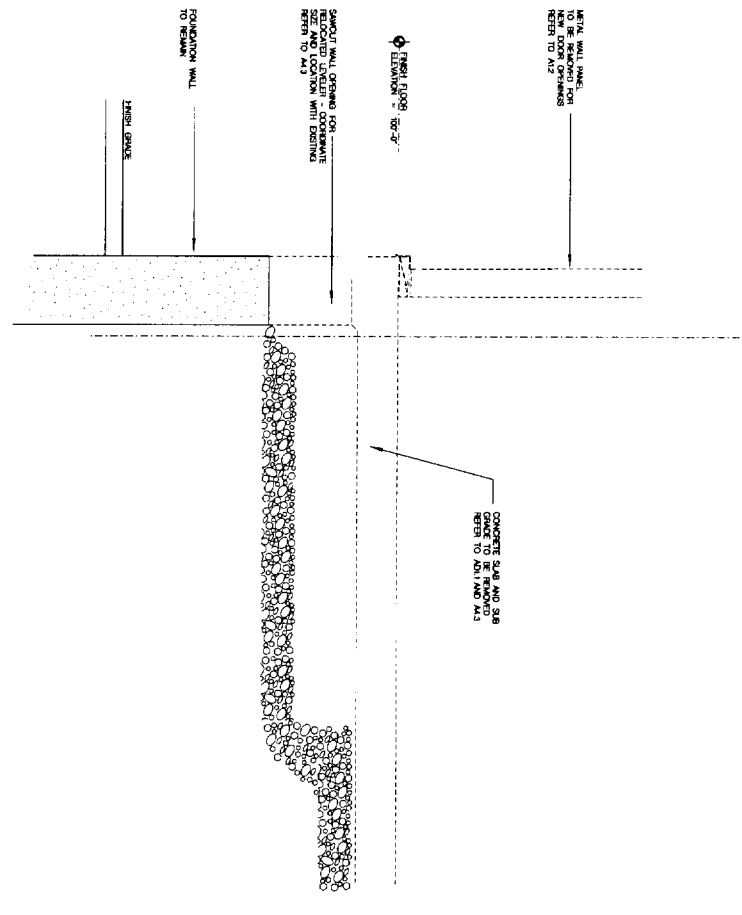


ENLARGED FLOOR PLAN: DOCK AREA
 SCALE: 1/4" = 1'-0"
 EXISTING WAREHOUSE FINISH FLOOR CALLED ELEVATION - 98'-0"

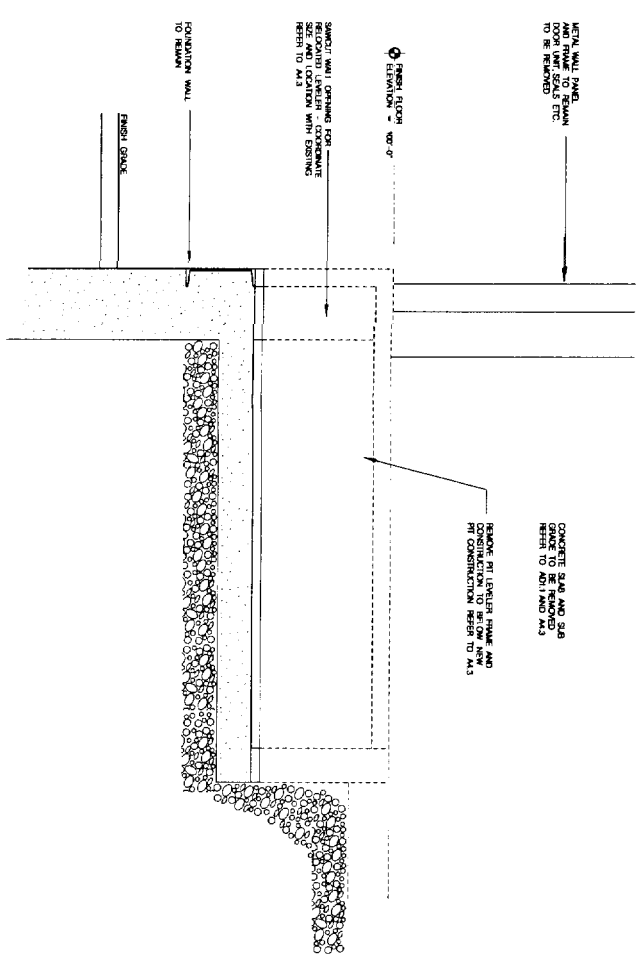
- KEY NOTES**
- DK1 EXISTING PIT LINTERS TO BE REMOVED REFER TO DRAWING 4011 FOR EXISTENTIAL INFORMATION
 - DK2 FOUNDATION WALLS TO BE REVEALED WITH CONCRETE "KEY" TO 11'-0"
 - DK3 REMOVE FOUNDATION OPENINGS AT EXISTING FOUNDATION LEVELS TO BE REVEALED
 - DK4 REMOVE FOUNDATION OPENINGS AT EXISTING FOUNDATION LEVELS TO BE REVEALED WITH CONCRETE "KEY" TO 11'-0"
 - DK5 NEW CONCRETE FOUNDATION WALLS TO BE REVEALED WITH CONCRETE "KEY" TO 11'-0"



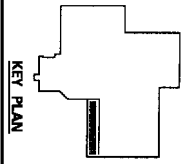
PARTIAL ELEVATION: DOCK WALL
 SCALE: 1/4" = 1'-0"



AA SECTION
 SCALE: 1/4" = 1'-0"



BB SECTION
 SCALE: 1/4" = 1'-0"

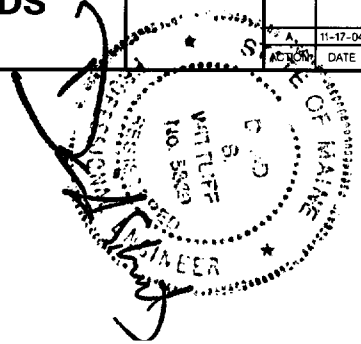


Warehouses and Office Renovations for
BARBER FOODS
 Portland, Maine

DATE: 11-17-04
 DESIGNED BY: rs
 DRAWN BY: pCS:ajpc
 CHECKED BY: dsw

FOOD TECH
 PLANNERS • ENGINEERS • BUILDERS
 FOOD TECH STRUCTURES, LLC
 2100 WASHINGTON STREET
 HANOVER, MA 02339
 Tel: (781) 261-0700
 Fax: (781) 261-0701

DRAWING NO:
AD1.3
 0412



NO.	DATE	RELEASED FOR BID	DESCRIPTION
1	11-17-04		