

DATE OF ISSUE

PRICING SET - 23 July 2013  
 ISSUED FOR PERMIT - 23 July 2013

# Paradigm Windows

56 Milliken Street, Portland, Maine

DRAWING LIST

STRUCTURAL DRAWINGS

S1.01 STRUCTURAL DETAILS

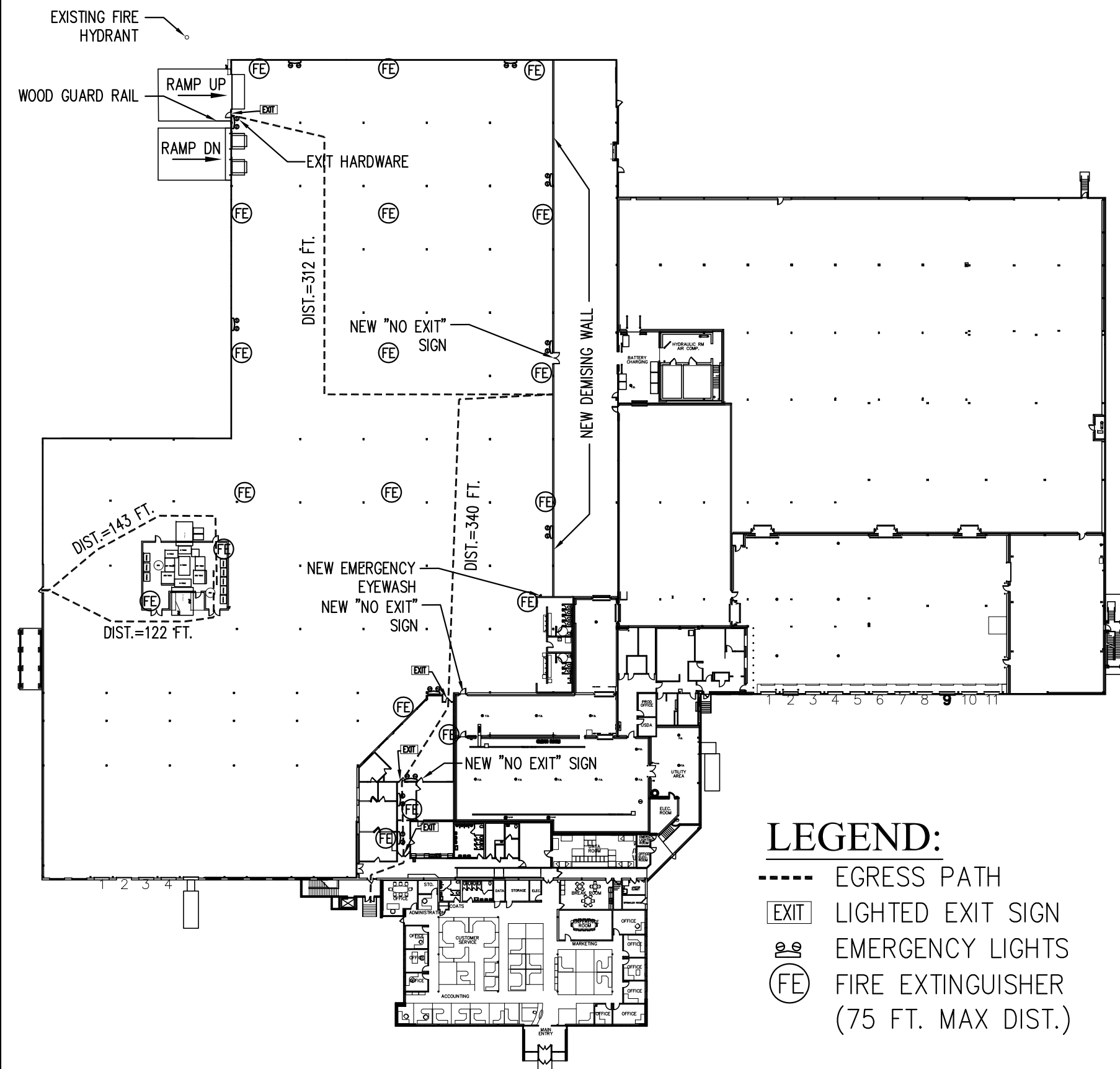
ARCHITECTURAL DRAWINGS

FLOOR PLANS

A1.01 FLOOR PLANS

ELEVATIONS

A2.01 ELEVATIONS & SECTIONS



- LEGEND:**
- EGRESS PATH
  - EXIT LIGHTED EXIT SIGN
  - EYEWASH EMERGENCY EYEWASH
  - FE FIRE EXTINGUISHER (75 FT. MAX. DIST.)

CONTACTS

<b>Developer:</b> JHR Development 169 Park Row, suite 5 Brunswick, ME 04011 (207) 729-0166	<b>Architect:</b> Archetype P.A. 48 Union Wharf Portland, ME 04101 (207) 772-6022	<b>Structural Engineer:</b> Structural Integrity Consulting Engineers, Inc. 77 Oak Street Portland, ME 04106 (207) 774-4614	<b>Civil Engineer:</b> Fay, Spofford & Thorndike 778 Main Street South Portland, ME 04106 (207) 775-1121	<b>Contractor:</b> Wright-Ryan Construction, Inc. 10 Danforth Street Portland, ME 04101 (207) 773-3625
--	---	--	---	---

LIFE SAFETY PLAN (N.T.S.)

RELEVANT CODES

- IBC 2009**
- OCCUPANCY F-1 (FACTORY - MODERATE HAZARD)
  - CONSTRUCTION TYPE IIB
  - ALLOWABLE FLOOR AREA F-1 (46,500 SQ.FT.) W/AUTOMATIC SPRINKLER INCREASE
  - PROPOSED FLOOR AREA F-1 (7500 SQ.FT.)
  - SPRINKLED WITH NFPA 13 AUTOMATIC SPRINKLER SYSTEM
  - ALLOWABLE HEIGHT F-1 (2) STORIES WITH SPRINKLER INCREASE
  - PROPOSED BUILDING HEIGHT (1) STORIES
  - FIRE RESISTANCE RATING STRUCTURAL FRAME (0 HOURS)
  - FIRE RESISTANCE RATING BEARING WALLS (0 HOURS)
  - FIRE RESISTANCE RATING NON-BEARING WALLS AND PARTITIONS (0 HOURS)
  - FIRE RESISTANCE RATING FLOOR CONSTRUCTION (0 HOURS)
  - FIRE RESISTANCE RATING ROOF CONSTRUCTION (0 HOURS)
  - STANDPIPE NOT REQUIRED
  - FIRE DEPARTMENT CONNECTION REQUIRED (AS DIRECTED BY FIRE)
  - MANUAL ALARM NOT REQUIRED WHERE EQUIPPED WITH AUTOMATIC SPRINKLER SYSTEM
  - SMOKE DETECTORS NOT REQUIRED

- REFERENCE**
- 306
  - T601
  - T503/506.3
  - 903.3.1.1
  - T503
  - T601
  - T601
  - T601
  - T601
  - T601
  - 905.3.1
  - 903.3.6
  - 907.2.4
  - 907.2.10

- NFPA 101 LIFE SAFETY 2009**
- USE GROUPS - INDUSTRIAL (GENERAL)
  - EMERGENCY LIGHTING REQUIRED
  - FIRE ALARMS REQUIRED
  - FIRE EXTINGUISHERS PROVIDED TO MEET NFPA 10
  - COMMON PATH OF TRAVEL - 100FT.
  - MAXIMUM TRAVEL DISTANCE - 400FT.
  - ONE HOUR RATED EXIT ENCLOSURE

- REFERENCE**
- 6.1.12/40.1.4.1.2
  - 40.3.2
  - 40.3.4
  - T-40.2.5
  - T-40.2.6
  - 7.1.3.2.1

