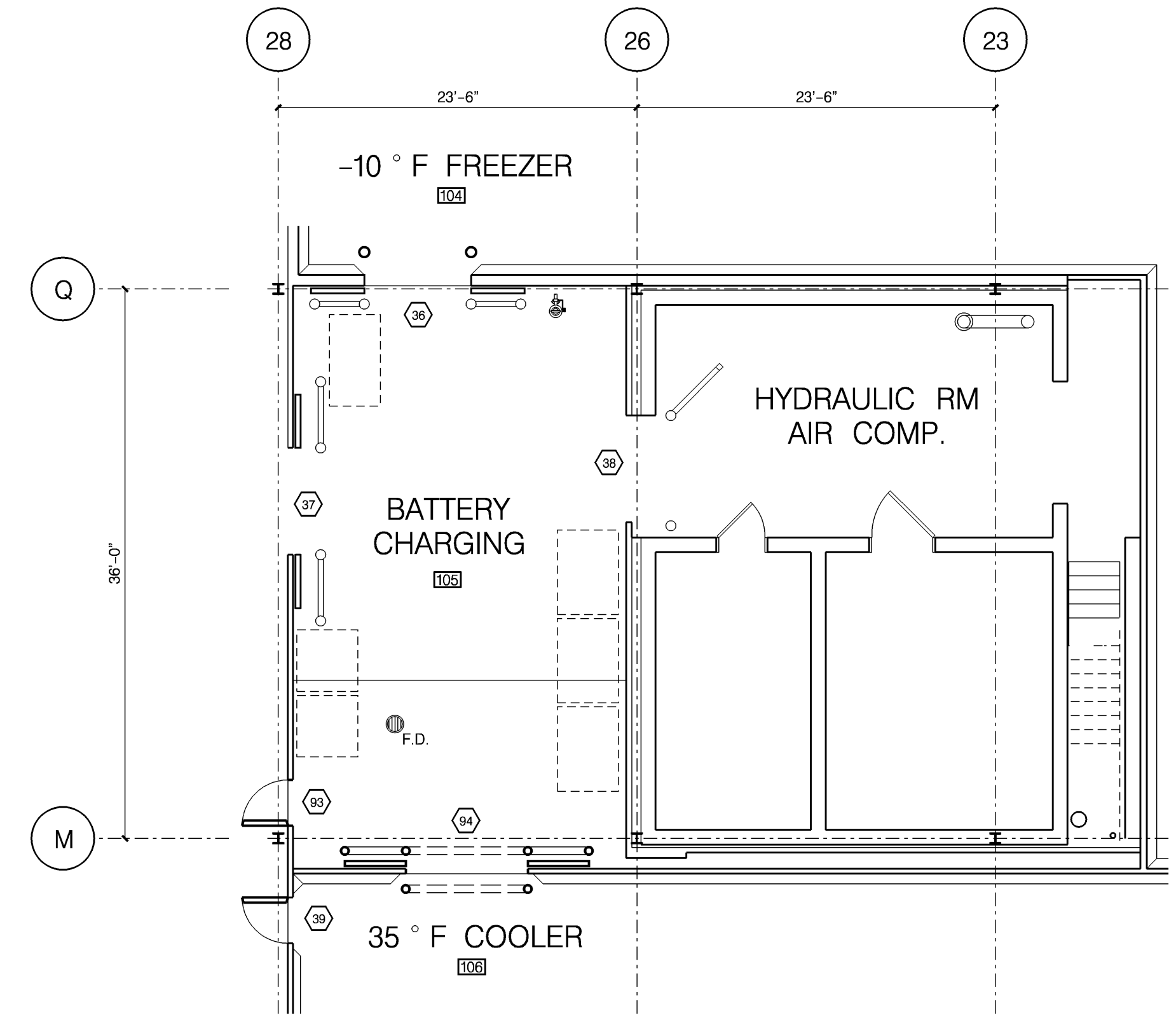
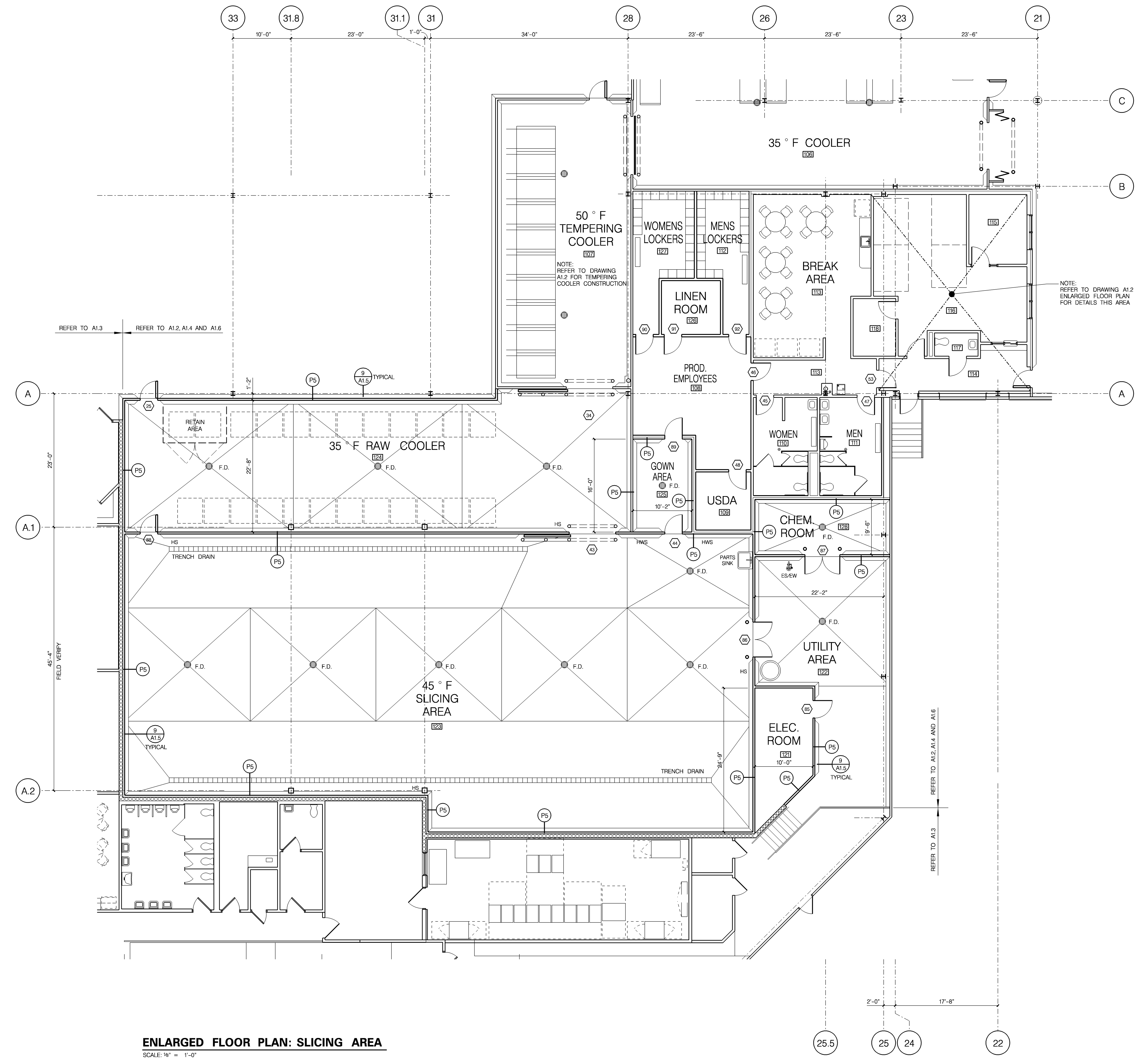


e:\l\barber_pro\dm\l_6\lpat_6.dgn
04-27-05



**ENLARGED FLOOR PLAN:
BATTERY CHARGING**
SCALE: 1/8" = 1'-0"



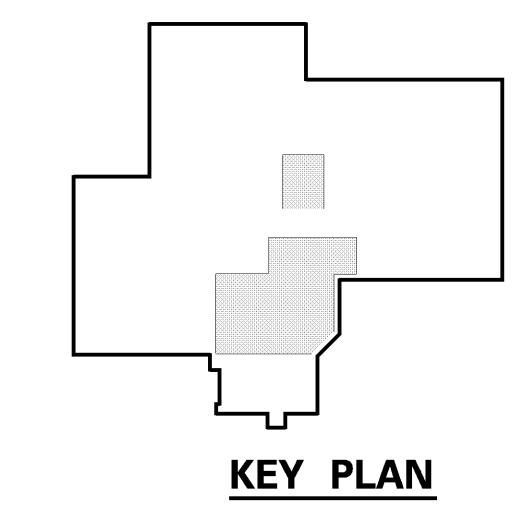
ENLARGED FLOOR PLAN: SLICING AREA
SCALE: 1/8" = 1'-0"

INSULATED WALL PANEL TYPES

- NOTES:
FOR ADDITIONAL INFORMATION ON PARTITION TYPES
REFER TO DRAWING A5.2
- AT LOCATIONS WHERE BUILDING STEEL PENETRATES IWP OR ICP AND IS EXPOSED
WITHIN THE COOLERS AND SLICING AREA, I.E. COLUMNS, GIRTS, JOISTS, CROSS BRACING, ETC.
STEEL IS TO BE ENCASED WITH 2" ILP FOR 4'-0". FILL VOIDS AROUND STEEL AND ILP WITH F.I.P.
INSULATION AND CAP END WITH 26 GA PREFINISHED METAL CLOSURE TRIM SET INTO SEALANT.
REFER TO SECTIONS AND DRAWING A10.1 FOR DETAILS.
- (P5) 3" TH PREFINISHED INSULATED WALL PANEL SYSTEM BOTTOM OF PANEL ELEVATION = 100'-0"
TOP OF PANEL ELEVATION = 111'-6" WITH 3" ICP - REFER TO A10.3.

LEGEND

- (100) ROOM NUMBER
REFER TO A5.2 & A5.2A
- (101) DOOR NUMBER
REFER TO A5.1 & A5.1A
- (102) FLOOR DRAIN LOCATIONS
REFER TO PLUMBING DRAWINGS
- (103) PARTITION TYPE DESIGNATION
REFER TO A5.2
- (HWS) HAND WASH STATION
REFER TO PLUMBING DRAWINGS
- (HS) HOSE STATION
REFER TO PLUMBING DRAWINGS
- (ES-EW) EMERGENCY SHOWER - EYE WASH
REFER TO PLUMBING DRAWINGS



| ACTION | DATE | DESCRIPTION |
|--------|----------|-------------------|
| A | 04-28-05 | ISSUED FOR PERMIT |

Process Enhancements for :
BARBER FOODS
Portland, Maine

ENLARGED FLOOR PLANS

PLANNERS - ENGINEERS - BUILDERS :
FOOD TECH STRUCTURES, LLC
2100 WASHINGTON STREET
HANOVER, MA 02339
Tel: (781) 261-9700
Fax: (781) 261-9701

**FOOD
TECH**

| | |
|--------------------|-------------------|
| DATE : 04-28-05 | DESIGNED BY : ITS |
| DRAWN BY : psA,jpc | CHECKED BY : dsW |

DRAWING NO.
A1.6
0412A