

DATE	ACTION	DESCRIPTION

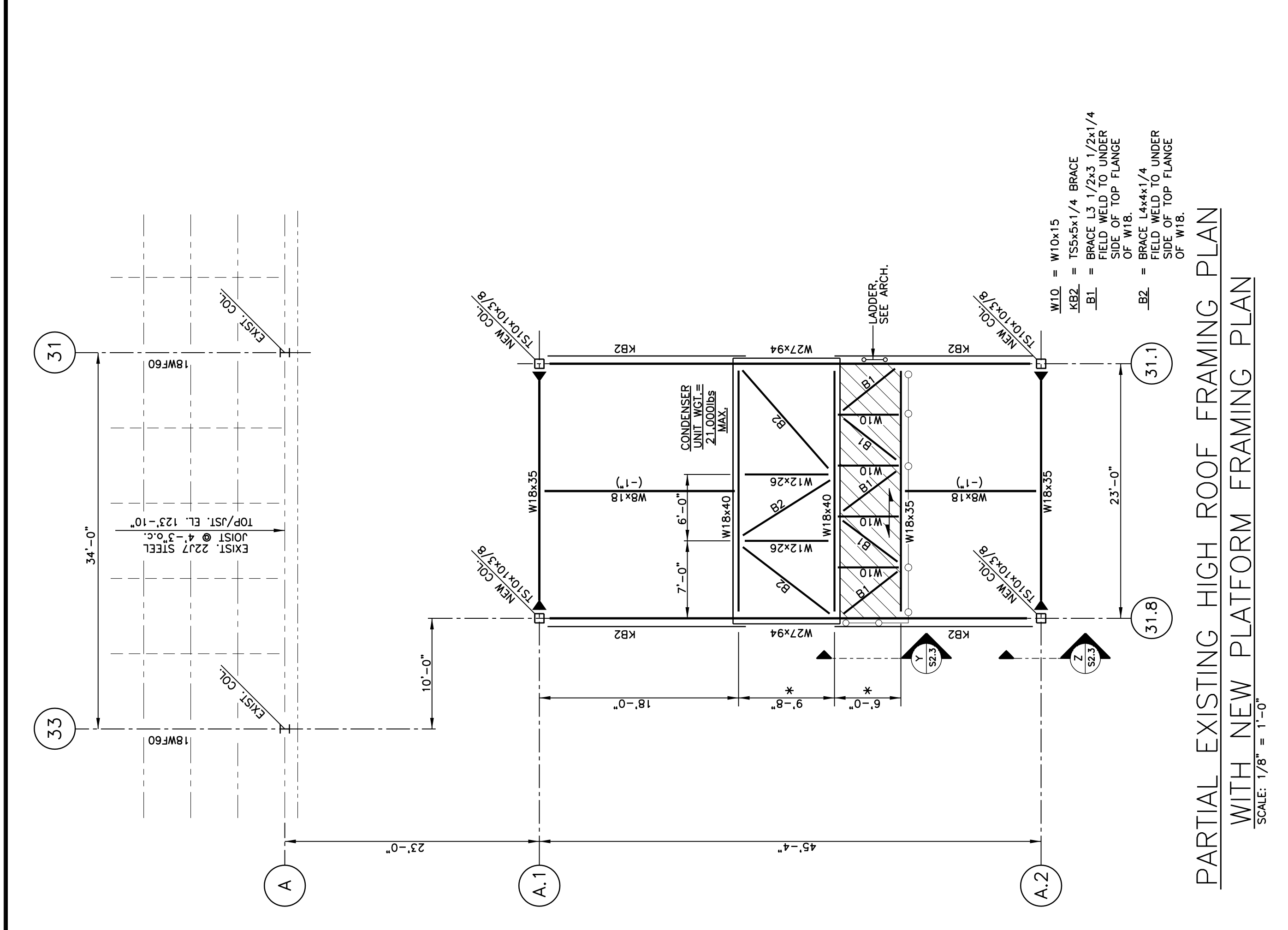
**Process Enhancements For:
BARBER FOODS**
Portland, Maine

**PARTIAL PLANS & DETAILS FOR
NEW REFRIGERATION EQUIPMENT
ABOVE SLICING AREA**

FOOD TECH STRUCTURES, LLC
PLANNERS • ENGINEERS • BUILDERS
2100 WASHINGTON STREET
HANOVER, MA 02339
Tel: (781) 261-9700
Fax: (781) 261-9701

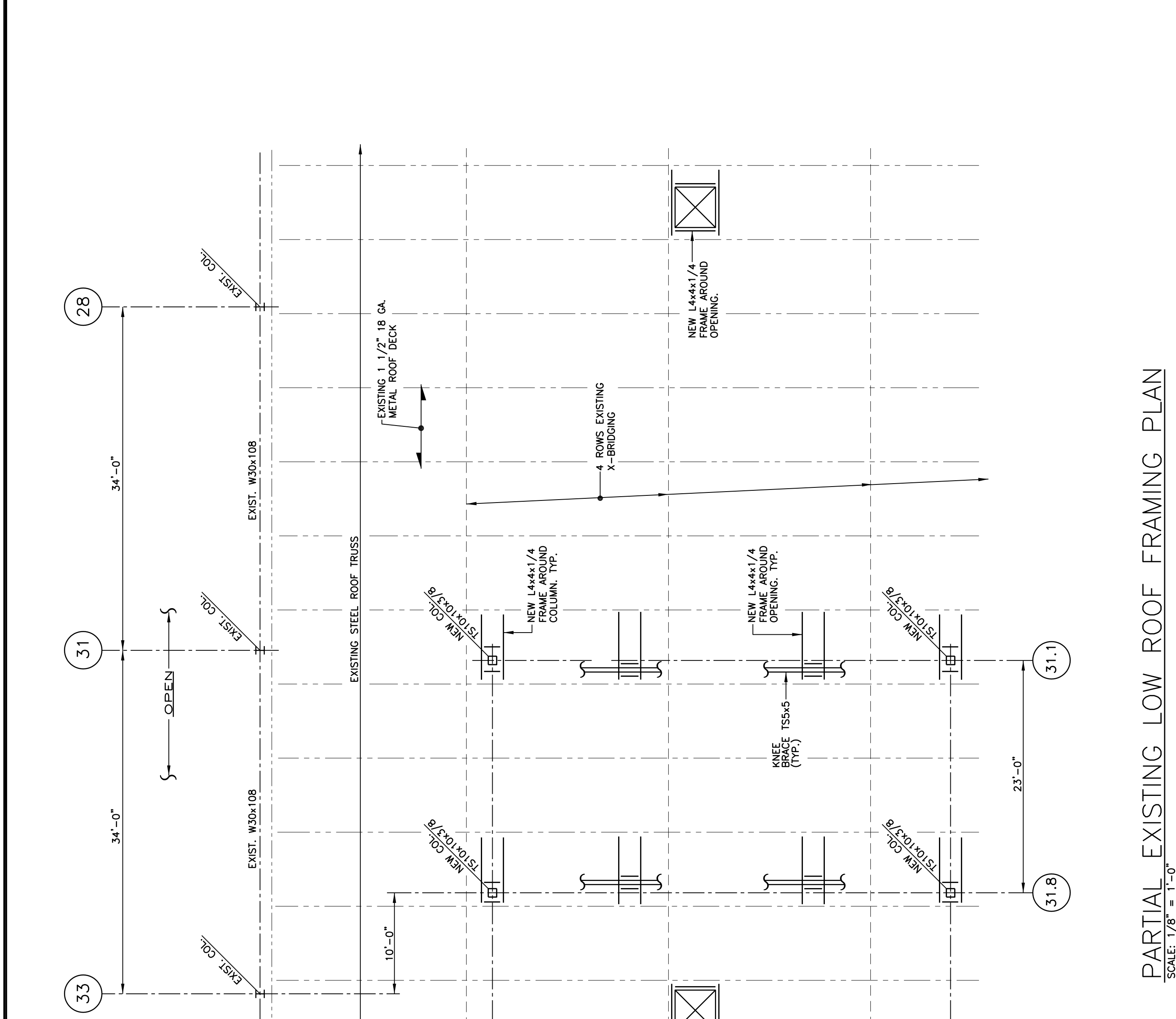
DATE: 04-28-05
DESIGNED BY: P.B.
DRAWN BY: P.B.
CHECKED BY: P.B.

DRAWING NO. **S2.3**
0412



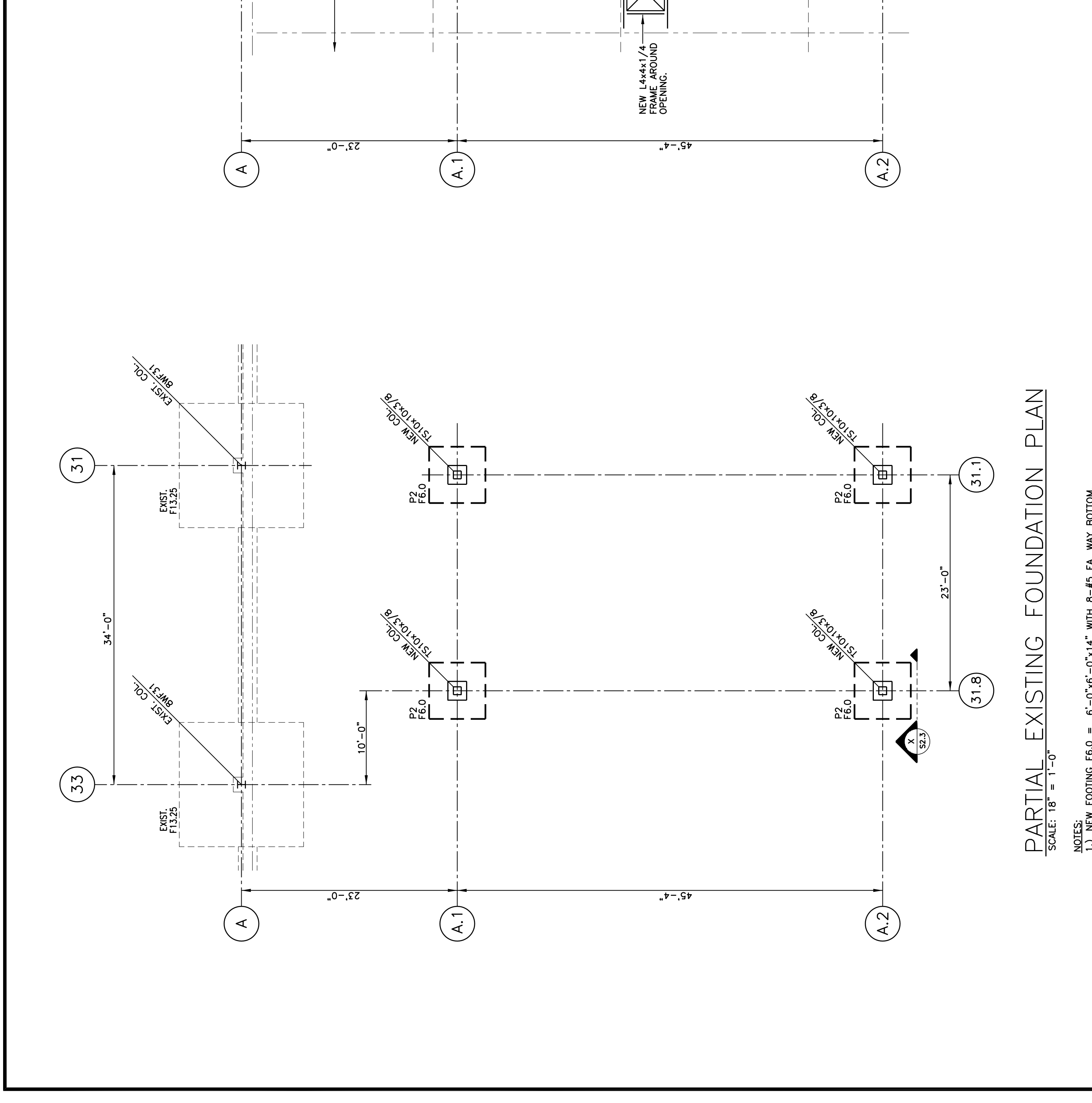
**PARTIAL EXISTING HIGH ROOF FRAMING PLAN
WITH NEW PLATFORM FRAMING PLAN**
SCALE: 1/8" = 1'-0"

NOTES:
 1.) TOP OF STRUCTURAL STEEL ELEV. 124'-6"
 2.) PROVIDE GALVANIZED STEEL GRATING WITH 1 1/2" X 3/8" BEARING AT EACH SUPPORTING BEAM. FOR EXACT LOCATIONS AND EXTENTS. SEE ARCH. DRAWINGS.
 3.) VERIFY ALL DIMENSIONS WITH ARCH'L. AND MECH'L. DRAWINGS.
 4.) SEE ARCHITECTURAL DRAWINGS FOR ADDITIONAL DETAILS.
 5.) SEE MECHANICAL DRAWINGS FOR ADDITIONAL DETAILS.
 6.) ---○--- = LIMITS OF HANDRAIL.
 7.) ALL STEEL SHALL BE HOT DIP GALVANIZED PER ASTM A123.
 8.) ---▲--- INDICATES MOMENT CONNECTED BEAM TO COLUMN.



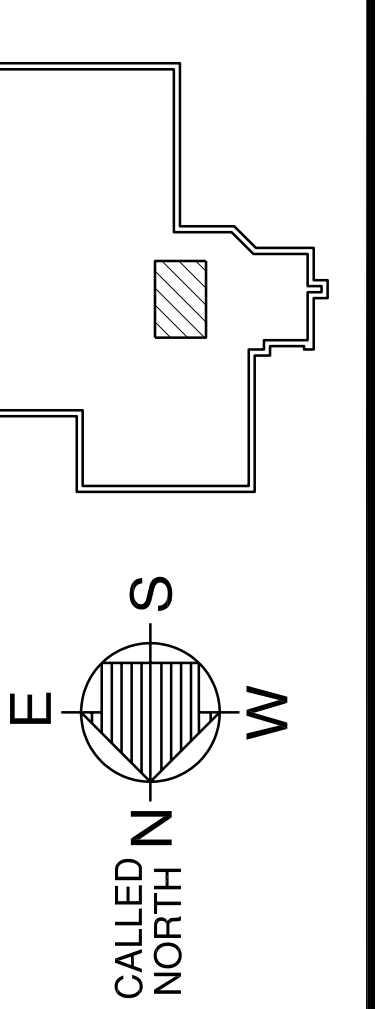
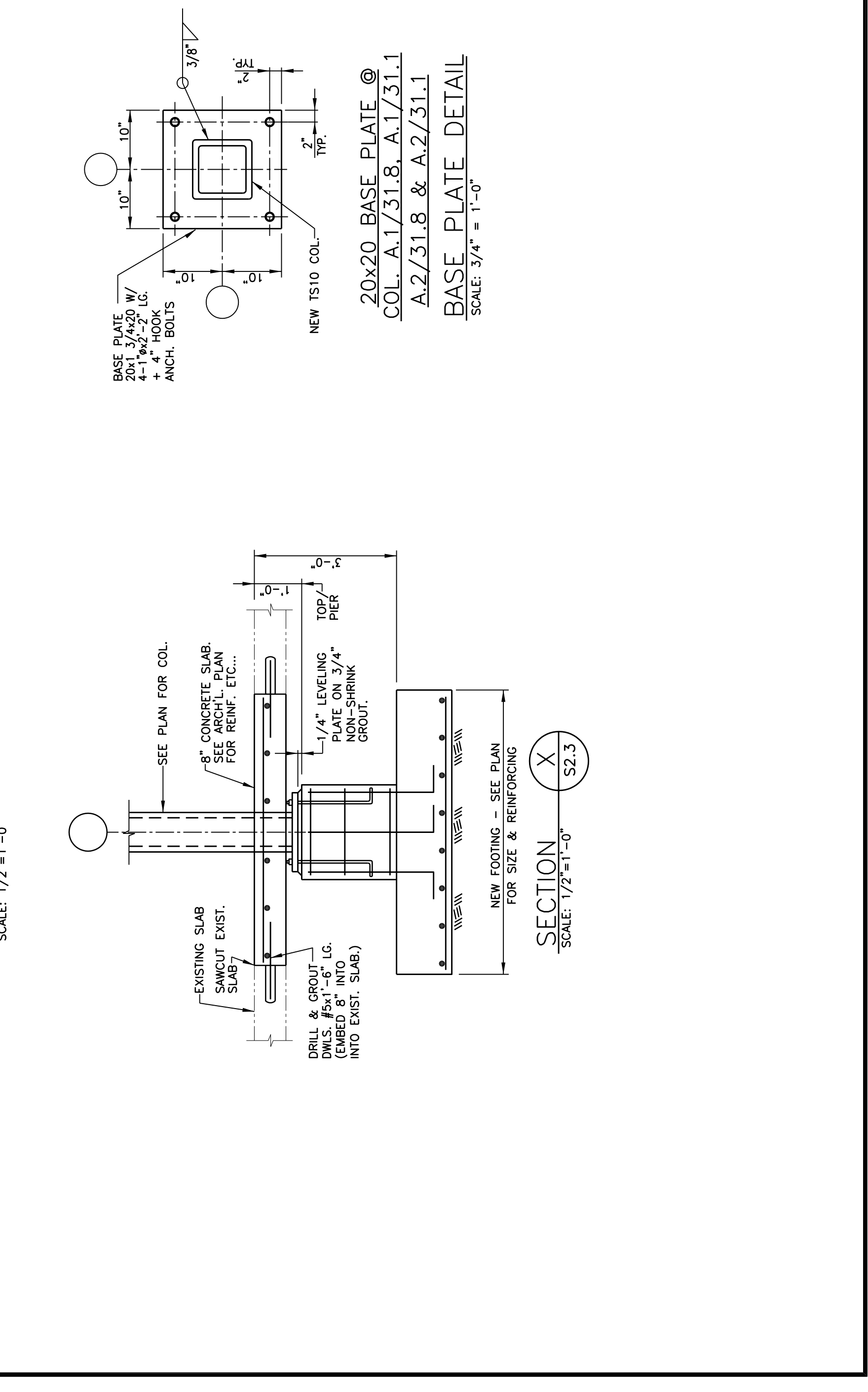
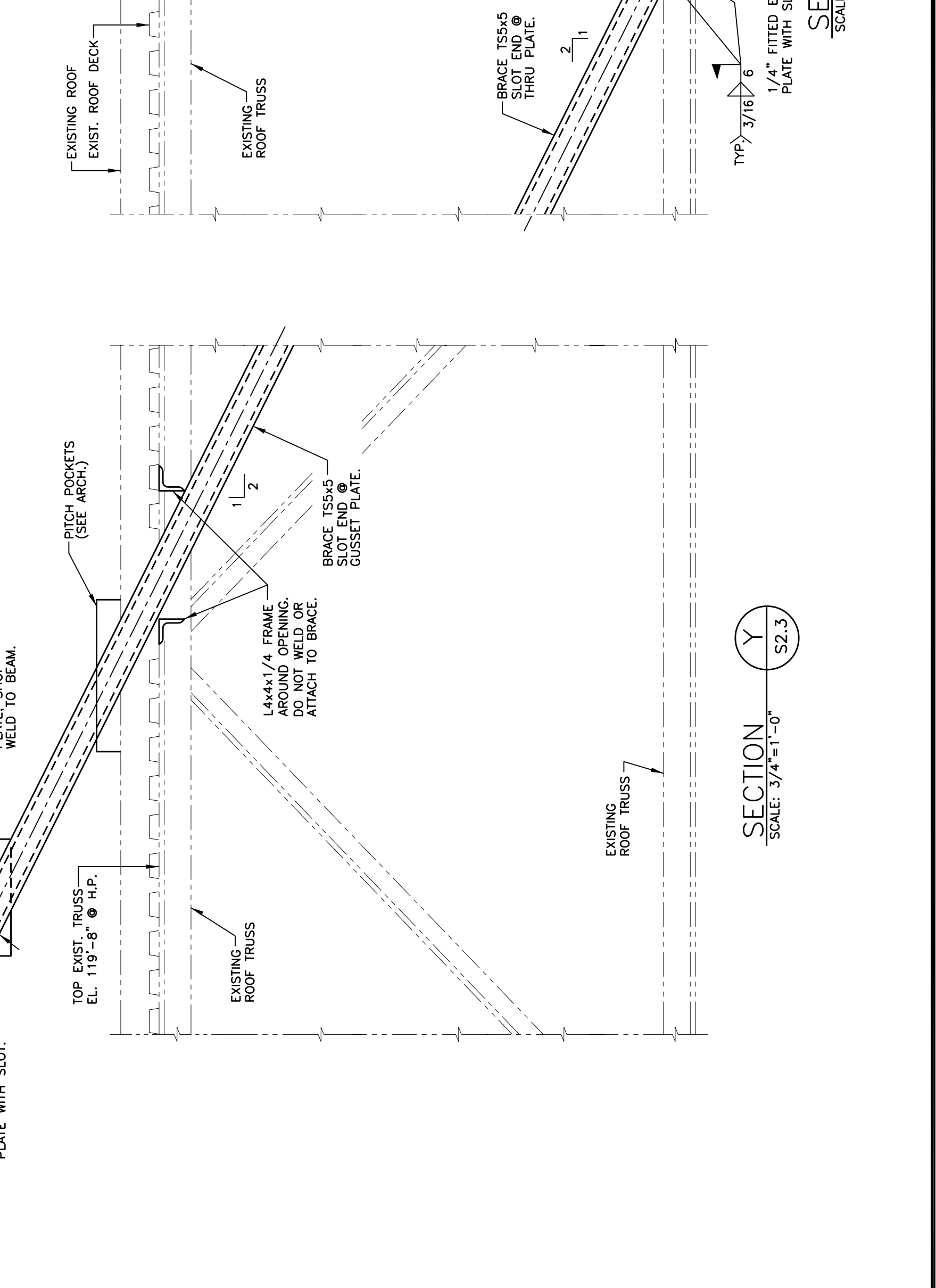
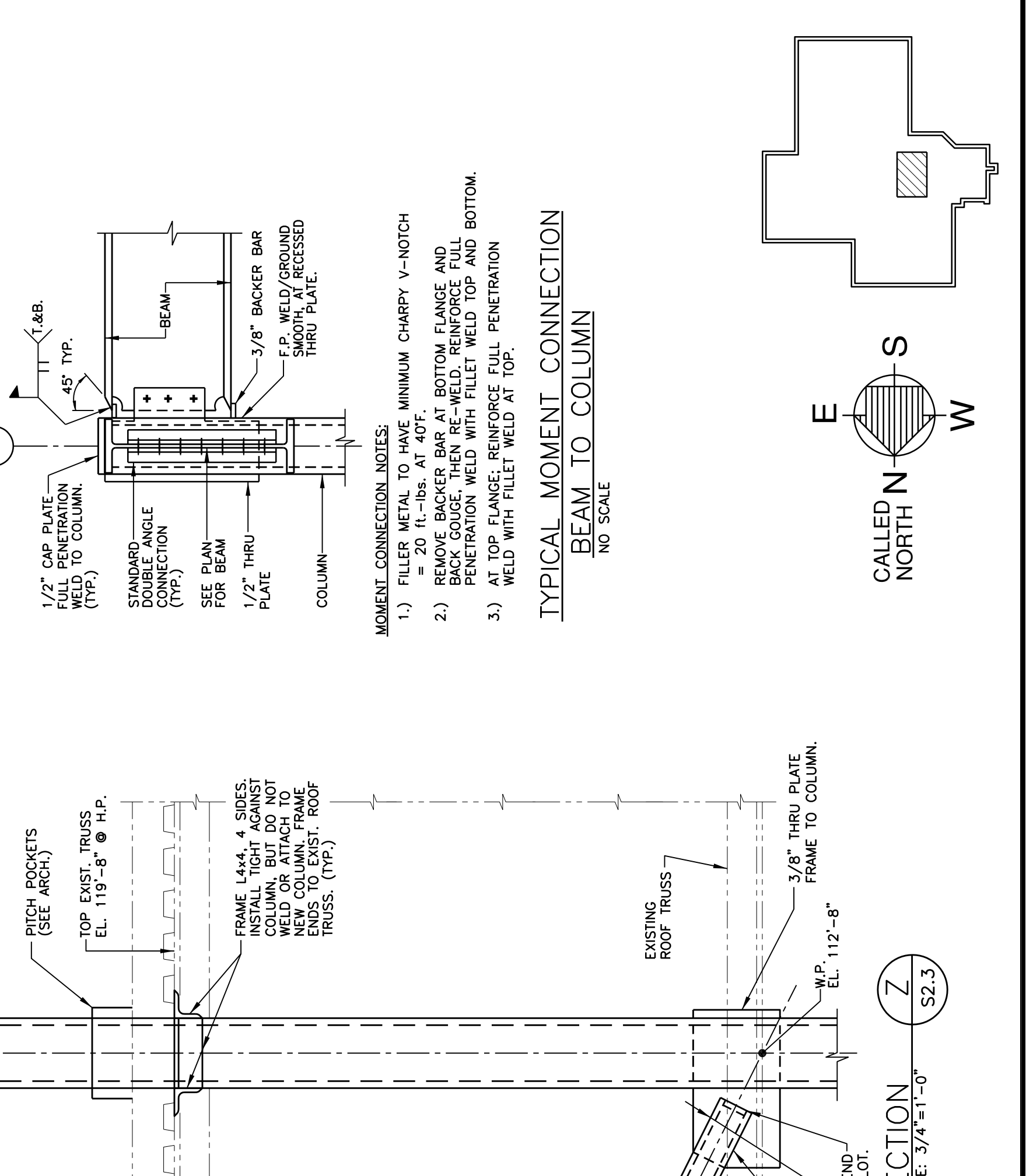
PARTIAL EXISTING LOW ROOF FRAMING PLAN
SCALE: 1/8" = 1'-0"

NOTES:
 1.) TOP OF STRUCTURAL STEEL ELEV. 124'-6"
 2.) PROVIDE GALVANIZED STEEL GRATING WITH 1 1/2" X 3/8" BEARING AT EACH SUPPORTING BEAM. FOR EXACT LOCATIONS AND EXTENTS. SEE ARCH. DRAWINGS.
 3.) VERIFY ALL DIMENSIONS WITH ARCH'L. AND MECH'L. DRAWINGS.
 4.) SEE ARCHITECTURAL DRAWINGS FOR ADDITIONAL DETAILS.
 5.) SEE MECHANICAL DRAWINGS FOR ADDITIONAL DETAILS.
 6.) ---○--- = LIMITS OF HANDRAIL.
 7.) ALL STEEL SHALL BE HOT DIP GALVANIZED PER ASTM A123.
 8.) ---▲--- INDICATES MOMENT CONNECTED BEAM TO COLUMN.



PARTIAL EXISTING FOUNDATION PLAN
SCALE: 1/8" = 1'-0"

NOTES:
 1.) NEW FOOTING 16.0' x 6'-0" x 14" WITH 8-#5 EA. WAY BOTTOM.



CALLED NORTH
SCALE: 3/4" = 1'-0"

SECTION Z
SCALE: 3/4" = 1'-0"

SECTION Y
SCALE: 3/4" = 1'-0"

SECTION X
SCALE: 1/2" = 1'-0"

SECTION X
SCALE: 1/2" = 1'-0"