

DEMOLITION - PLUMBING

GENERAL REQUIREMENTS
PROCEED WITH THE COMPLETION OF THE WORK IN SUCH A MANNER AS TO CAUSE THE LEAST POSSIBLE INTERFERENCE WITH THE OWNER'S OPERATION...

ANY EXISTING EQUIPMENT NOT SHOWN ON THE DRAWINGS AND WHICH ARE LOGICALLY EXPECTED TO CONTINUE IN SERVICE AND WHICH MAY BE INTERRUPTED OR DISTURBED DURING CONSTRUCTION...

THIS CONTRACTOR SHALL BE RESPONSIBLE FOR THE RECONSTRUCTION OF ANY DEMOLISHED AREAS THAT REQUIRE RECONSTRUCTION AS A RESULT OF SPECIFIED WORK...

DEMOLITION AND INSTALLATION OF NEW PLUMBING SYSTEMS SHALL REQUIRE SCHEDULED PHASES OF CONSTRUCTION.
DRAWINGS ARE BASED ON THE BEST INFORMATION AVAILABLE...

THE CONTRACTOR SHALL BE RESPONSIBLE FOR THE WORK NORMALLY DONE BY OTHER TRADES, AND IS NOT COVERED AS A PART OF OTHER DIVISIONS...

GENERAL NOTES

- 1. COORDINATE WITH OTHER TRADES TO ELIMINATE ANY CONFLICTS BETWEEN PIPING, DUCTWORK, ELECTRICAL WORK, ETC.
2. FOR DETAILS, EQUIPMENT CONNECTIONS, AND PIPES SIZES NOT SHOWN ON FLOOR PLANS, REFER TO DETAILS, RISERS AND SCHEDULES.
3. PIPE ROUTING IS SHOWN IN APPROXIMATE LOCATIONS.
4. PLUMBING CONTRACTOR SHALL COORDINATE WITH MECHANICAL AND GENERAL CONTRACTORS FOR VERTICAL CHASE AND WALL REQUIREMENTS.
5. VERIFY ALL PLUMBING EQUIPMENT CONNECTION AND ROUGH-IN REQUIREMENTS BEFORE INSTALLATION.
6. FINISHED FLOOR ELEVATION = 100.00 UNLESS DENOTED OTHERWISE.
7. PLUMBING CONTRACTOR SHALL PROVIDE ACCESSIBILITY TO ALL VALVES AND CONTROL DEVICES. FURNISH ACCESS PANELS WHERE SHOWN OR REQUIRED FOR ACCESS TO ALL CONCEALED VALVES OR OTHER EQUIPMENT FURNISHED UNDER THIS CONTRACT WHERE NO OTHER MEANS IS PROVIDED.
8. PLUMBING CONTRACTOR TO SEE ARCHITECTURAL PLANS FOR CHANGES IN CEILING HEIGHTS.
9. CONTRACTOR SHALL BE RESPONSIBLE FOR INSTALLATION OF ALL REQUIRED PIPING OFFSETS FOR COMPLETE PLUMBING SYSTEM INSTALLATION.
10. GAS PIPE SIZING BASED ON 2 PSIG PRESSURE.
11. DRAWING INTENT IS TO INDICATE GENERAL ARRANGEMENT, DESIGN AND INTENT OF WORK, AND IS PARTIALLY DIAGRAMMATIC. DRAWING SHALL NOT BE SCALED.

PLUMBING FIXTURE SCHEDULE table with columns: TAG, DESCRIPTION, MANUFACTURER, FIXTURE MODEL NUMBER, FLUSH VALVE/FAUCET MODEL NUMBER, DRAIN MODEL NUMBER, WATER SUPPLY SIZES (HOT, COLD), SANITARY SIZE, SHUT-OFF VALVES, REMARKS

- NOTES: 1. CW/ES-1 IS SUPPLIED WITH TEMPERED WATER FROM MW-1.
2. ANSI LOAD CLASS - SPECIAL DUTY (OVER 10,000 LBS.)
3. REUSE EXISTING WATER CLOSET(S) SALVAGED DURING DEMOLITION, DATA GIVEN FOR INFORMATION/REPLACEMENT PURPOSES.
4. PROVIDE WITH STAINLESS STEEL SLOTTED GRATE AND 6000 CAPACITY BASKIN WITH STAINLESS STEEL SEDIMENT BUCKET.
5. PROVIDE WITH 50 FT. OF WHITE HOSE ASSEMBLY.
6. PROVIDE WITH WATTS 90 BACKFLOW PREVENTER.
7. PROVIDE STAINLESS HUB DRAIN IN SLUING AREA AND COOLER AREA.

PUMP SCHEDULE

PUMP SCHEDULE table with columns: UNIT NO., SERVICE, LOCATION, MANUFACTURER, MODEL, FLOW RATE, TOTAL HEAD, MOTOR SIZE, MOTOR SPEED, PUMP DISCHARGE, BASIN DIAMETER, BASIN DEPTH, ELECTRICAL DATA, REMARKS

SUMP PUMP SCHEDULE

SUMP PUMP SCHEDULE table with columns: UNIT NO., LOCATION, MANUFACTURER, MODEL, FLOW RATE, TOTAL HEAD, MOTOR SIZE, MOTOR SPEED, PUMP DISCHARGE, BASIN DIAMETER, BASIN DEPTH, ELECTRICAL DATA, REMARKS

DOMESTIC HOT WATER HEATER SCHEDULE

DOMESTIC HOT WATER HEATER SCHEDULE table with columns: UNIT NO., LOCATION, MANUFACTURER, MODEL NO., INPUT AIR, FURNACE TEMPERATURE, RECOVERY, TANK CAPACITY, ELECTRICAL DATA, REMARKS

- NOTES: 1. UNIT IS PACKAGED MOUNTED SKID CONSISTING OF (1) WATER HEATER, (1) 1/3 HP PUMP, AND (1) 140 GALLON STORAGE TANK.
2. SINGLE POINT POWER CONNECTION TO SKID BY EC REQUIRED.
3. COMBUSTION FAN = 1HP (16 AMPS), PUMP = 1/3HP (8 AMPS).

MECHANICAL ABBREVIATIONS

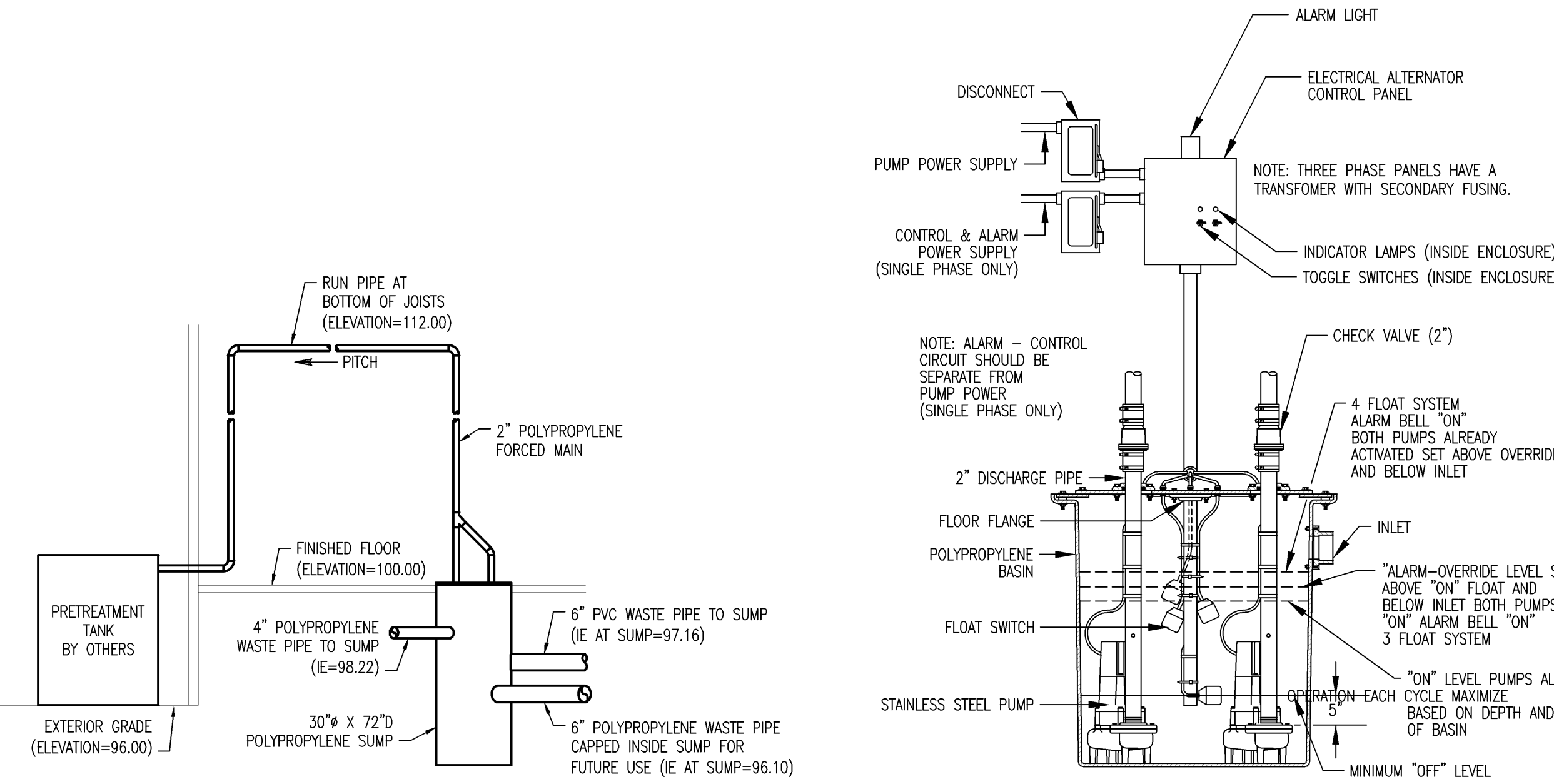
MECHANICAL ABBREVIATIONS table listing various symbols and their corresponding abbreviations for equipment, piping, and electrical components.

NOTE: SCHEDULE IS STANDARD. ALL ABBREVIATIONS LISTED DO NOT NECESSARILY APPEAR ON THESE PLANS.

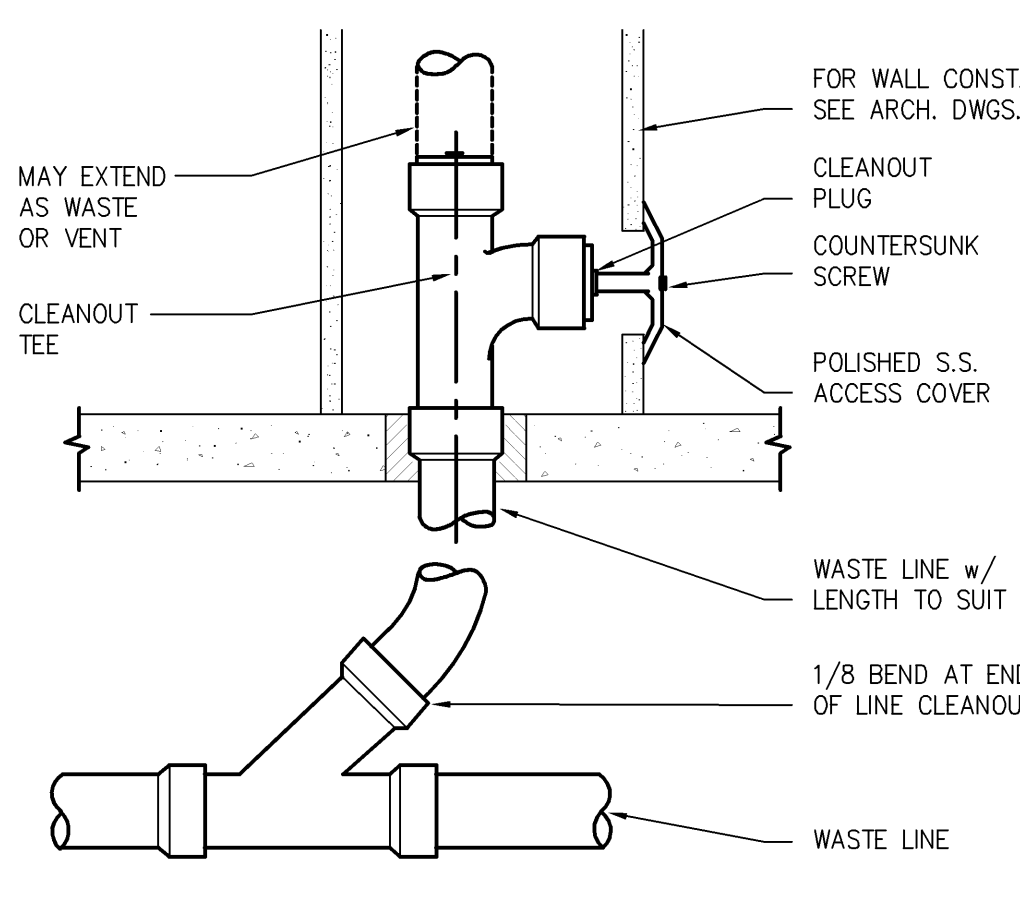
MECHANICAL ABBREVIATIONS

MECHANICAL ABBREVIATIONS table listing various symbols and their corresponding abbreviations for piping, valves, and other mechanical components.

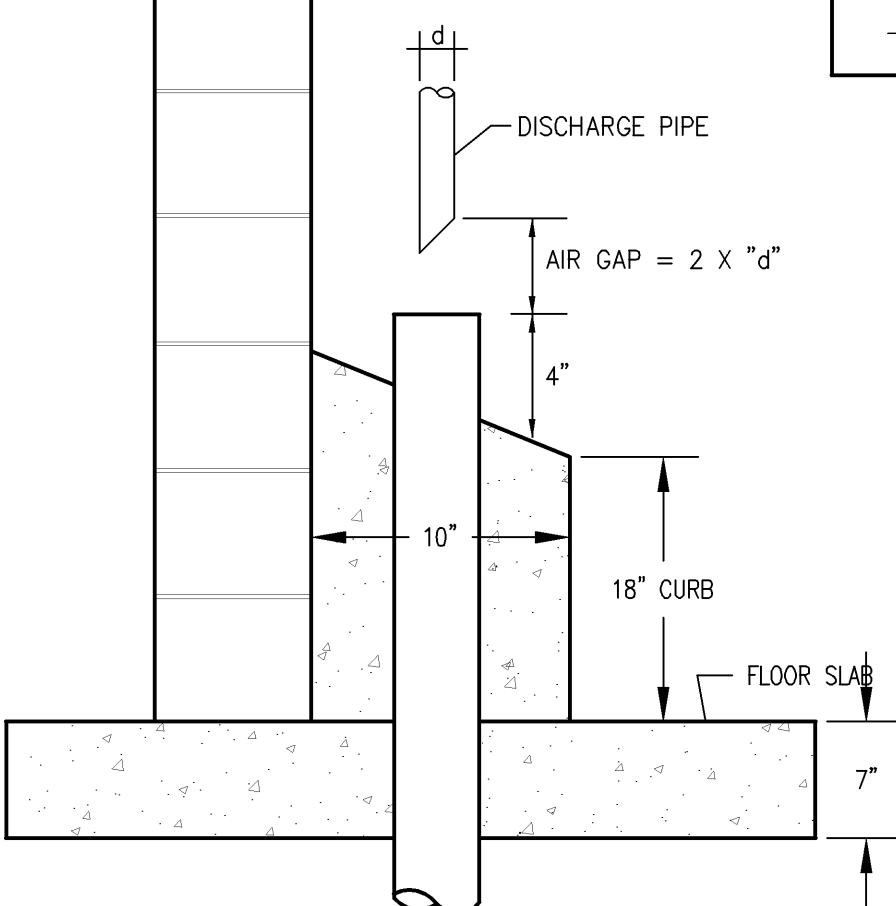
- LEGEND: FLOOR DRAIN, ROOF DRAIN, DOWN SPOUT, HOSE BIB, SENSOR, CLEAN OUT, STAND PIPE, SMOKE DETECTOR, FIRE DEPT CONNECTION, THERMOSTAT, PENDANT TYPE SPRINKLER HEAD, UPRIGHT SPRINKLER HEAD, SPRINKLER HEAD, CONNECT NEW TO EXISTING, AIR FLOW ON POSITIVE SIDE, AIR FLOW ON NEGATIVE SIDE, AIR FLOW ON SUPPLY SIDE.



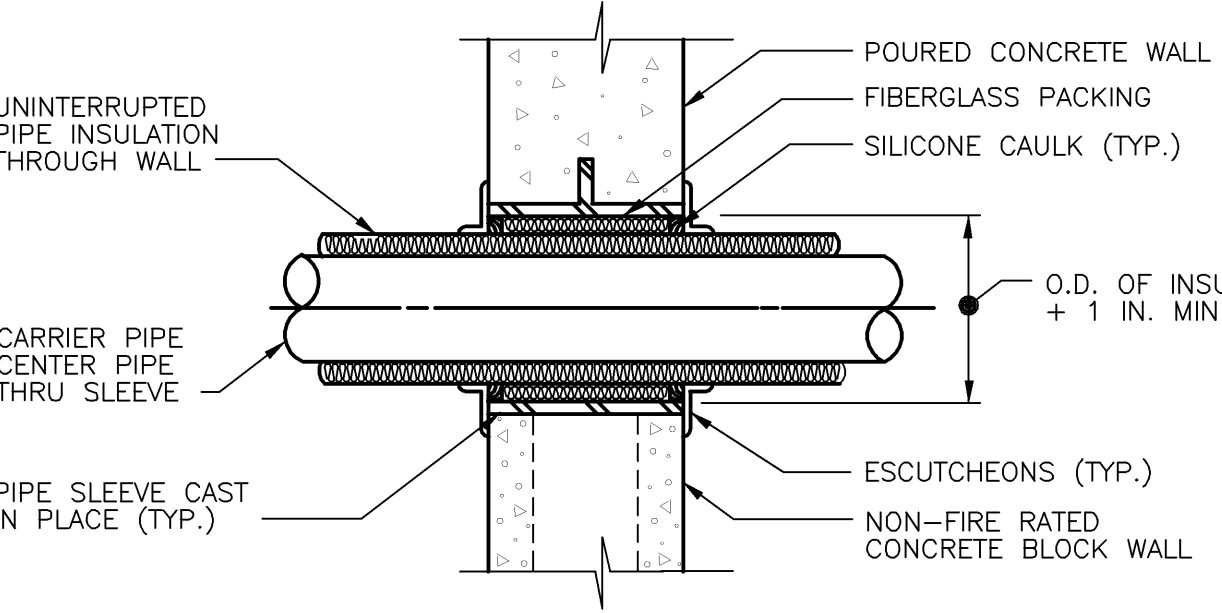
2 DUPLEX SUMP PUMP P1.0 NO SCALE



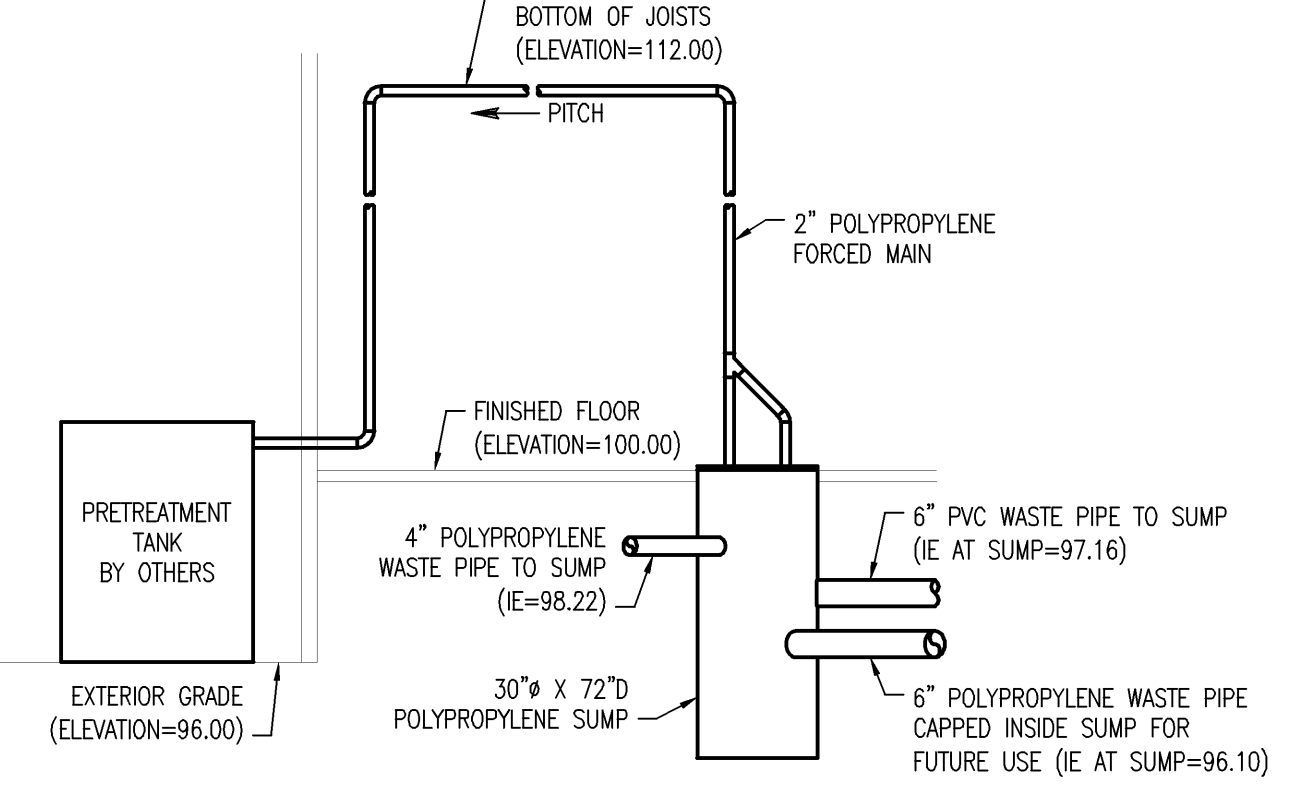
3 WALL CLEANOUT P1.0 NO SCALE



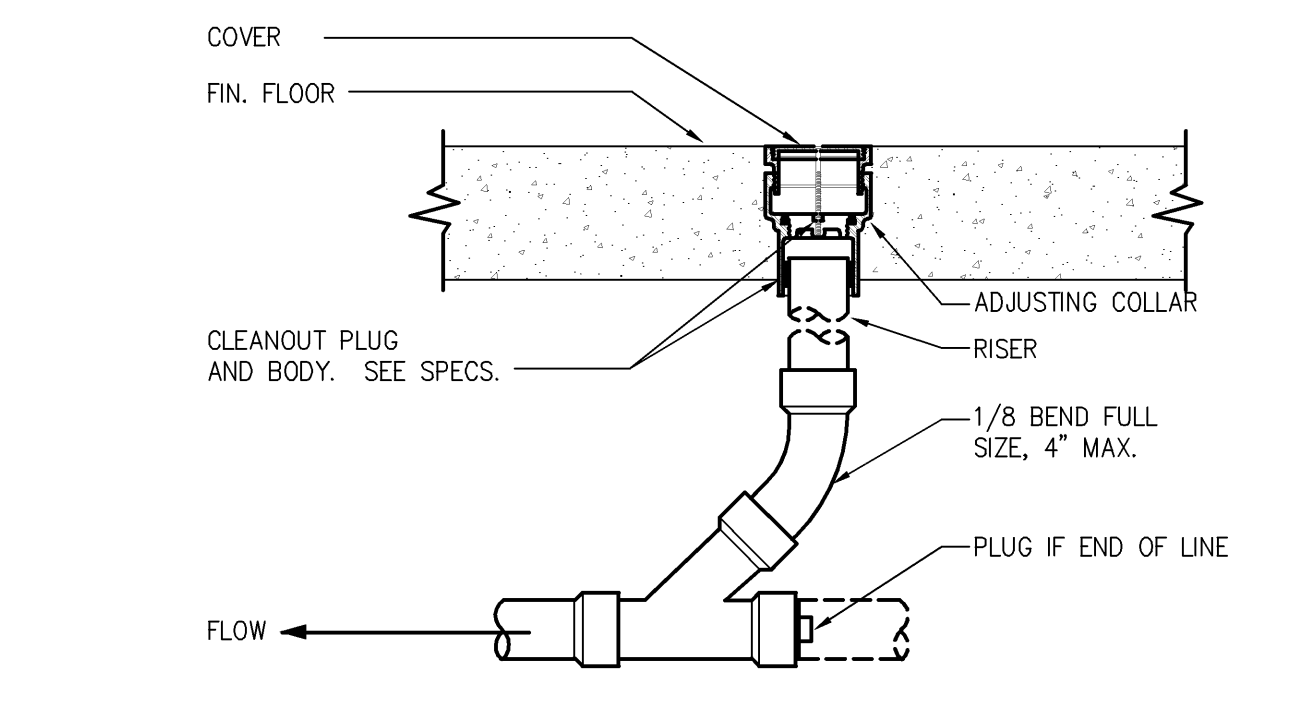
4 HUB DRAIN P1.0 NO SCALE



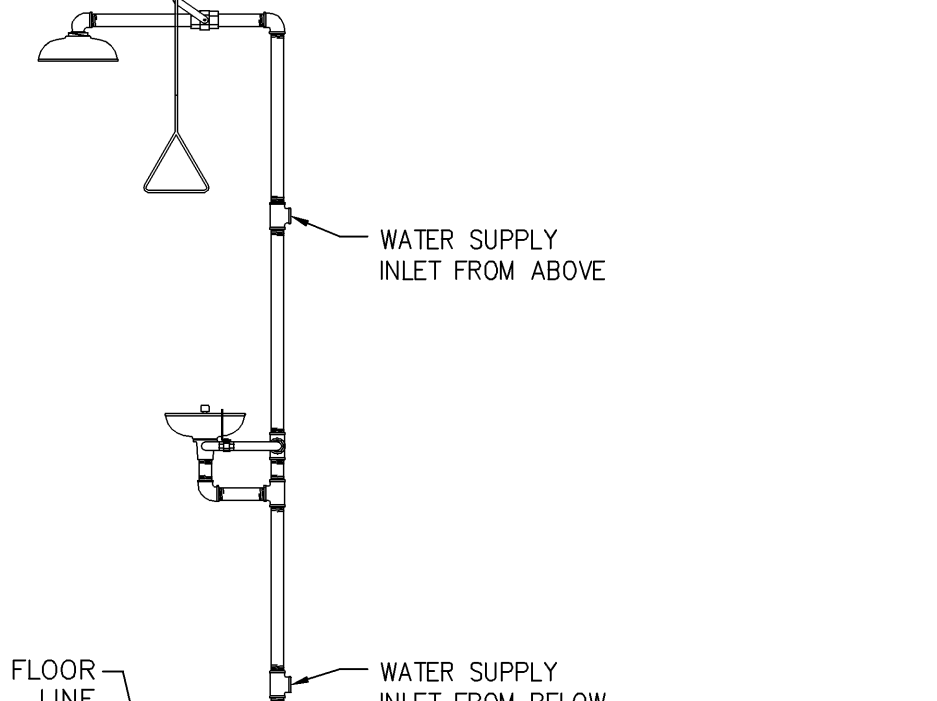
5 PIPE THRU WALL PENETRATION P1.0 NO SCALE



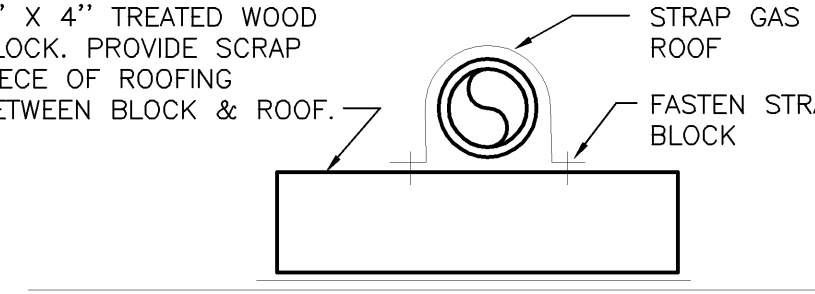
1 NORTH SUMP PIT ELEVATION P1.0 NO SCALE



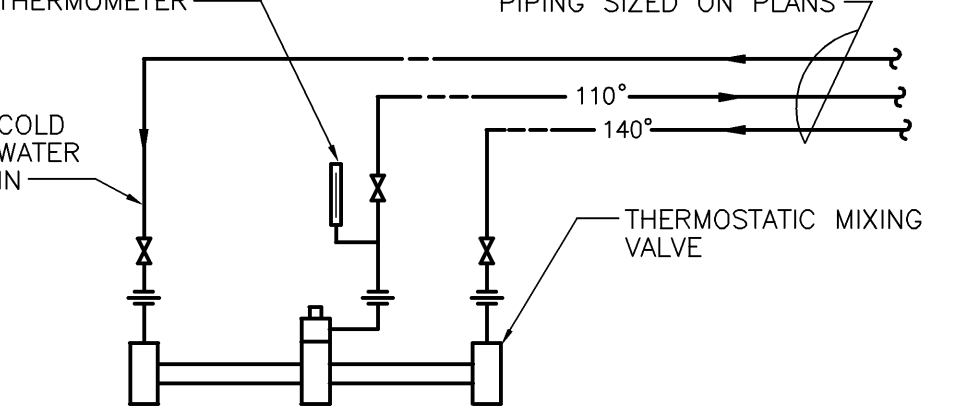
6 FLOOR CLEANOUT P1.0 NO SCALE



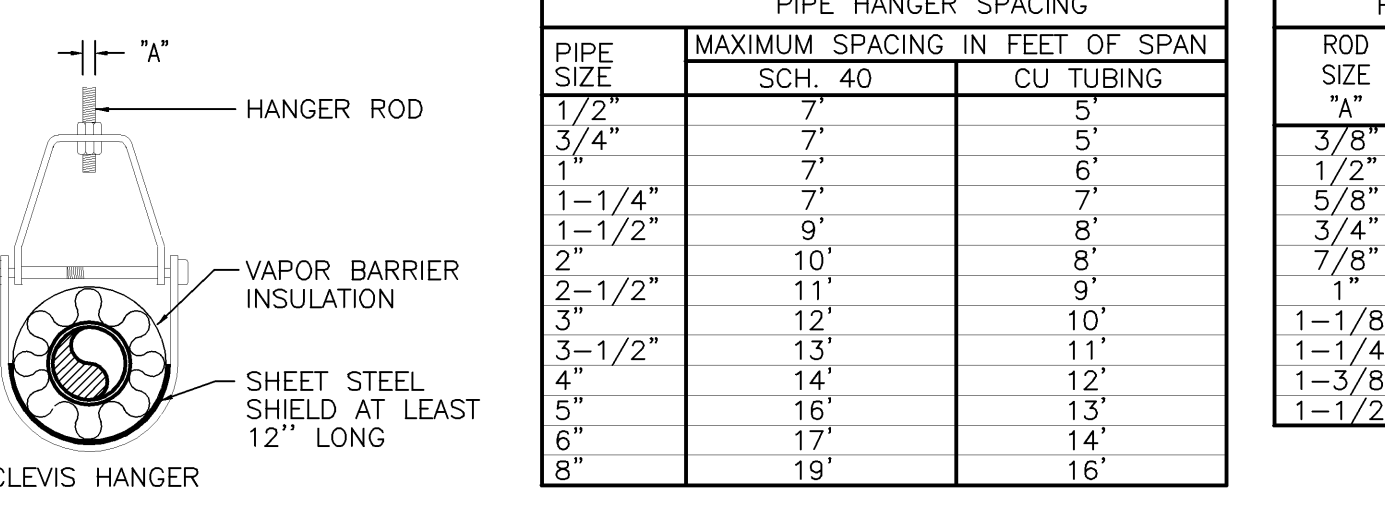
7 EYE-WASH STATION P1.0 NO SCALE



8 GAS PIPE SUPPORT P1.0 NO SCALE



9 DOMESTIC HW MIXING VALVE P1.0 NO SCALE



10 CLEVIS HANGER P1.0 NO SCALE

PIPE HANGER SPACING and HANGER ROD table providing technical specifications for hanger rods and pipe spacing.

NOTE: 1. FOR PRODUCTION AREA, RODS SHALL BE PARTIALLY THREADED STAINLESS STEEL.

DRAWING LIST table listing drawing titles and sheet numbers.

Process Enhancements for: BARBER FOODS Portland, Maine

PLUMBING SYMBOLS, ABBREVIATIONS, SCHEDULES & DETAILS

FOOD TECH STRUCTURES, LLC 2100 WASHINGTON STREET HANOVER, MA 02339 Tel: (781) 261-9700 Fax: (781) 261-9701

DATE: 04-05 DESIGNED BY: RDS DRAWN BY: TKT CHECKED BY: RBE

DRAWING NO.

P21.0

0412A