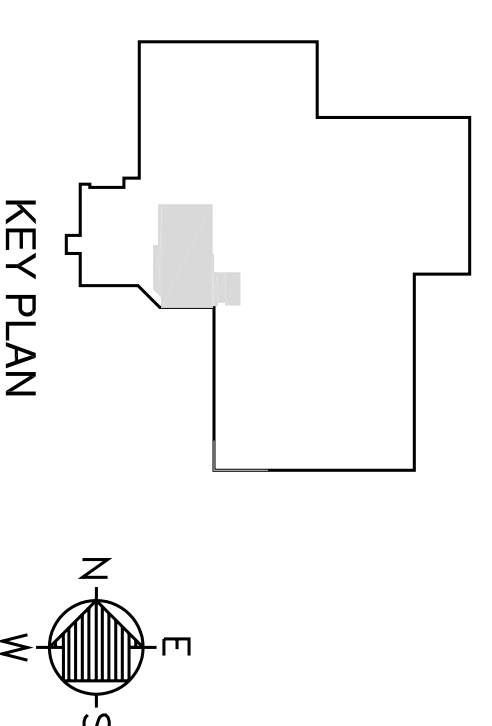


POWER FLOOR PLAN
 1/8"=1'-0"
 0 5 10

- GENERAL NOTES**
1. MINIMUM CONDUIT SIZE SHALL BE 3/4" THROUGHOUT THE INDUSTRIAL NONMETALLIC CONDUITS.
 2. MINIMUM WIRE SIZE SHALL BE #12 AWG COPPER AND 90°C MINIMUM INSULATION.
 3. UNDESIRABLE CONDUIT WITHIN THE BUILDING IS NOT PERMITTED UNLESS SPECIFICALLY NOTED OTHERWISE.
 4. JOINT RECEPTACLES AT +46" ABOVE FINISH FLOOR THROUGHOUT THE INDUSTRIAL AREAS.
 5. COMBINING CURRENT-CARRYING CONDUCTORS IN ONE CONDUIT FOR POWER WIRING ONLY.
 A. DO NOT COMBINE ANY MORE THAN #12 OR #10 CURRENT-CARRYING CONDUCTORS IN ONE CONDUIT.
 B. PROVIDE 3/4" CONDUIT FOR THE #12 AND #10 IN THE OFFICE AREAS.
 C. MORE THAN THREE CURRENT-CARRYING CONDUCTORS AND LARGER CONDUCTORS SHALL BE INSTALLED IN ONE CONDUIT.
 D. ALL CONDUITS SHALL HAVE DEDICATED CONDUIT ONE SIZE LARGER THAT WHAT THE CODE TABLES RECOMMEND.
 6. REFER TO THE REFRIGERATED AREAS PENETRATION DETAIL ON DRAWING E1.1.



ACTION	DATE	DESCRIPTION
0	5/5/05	RELEASED FOR PERMITTING

Process Enhancements for:
BARBER FOODS
 Portland, Maine

PARTIAL POWER FLOOR PLAN

PLANNERS • ENGINEERS • BUILDERS
FOOD TECH STRUCTURES, LLC
 2100 WASHINGTON STREET
 HANOVER, MA 02339
 Tel: (781) 261-9700
 Fax: (781) 261-9701

DATE : 5-6-05
 DESIGNED BY: VPM
 DRAWN BY: JDF
 CHECKED BY: VPM

E3.4

DRAWING NO. 0412A