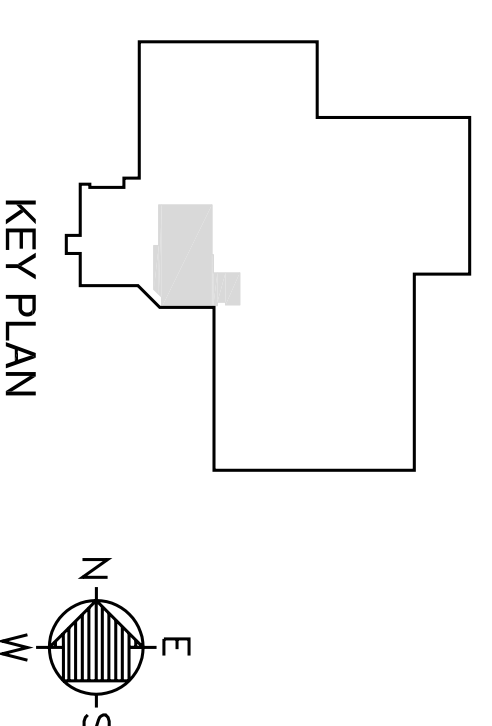


LIGHTING FLOOR PLAN
 0 5 10
 1/8"=1'-0"

- GENERAL NOTES**
1. MINIMUM CONDUIT SIZE SHALL BE 3/4" THROUGHOUT THE INDUSTRIAL NONMETALLIC CONDUITS.
 2. MINIMUM WIRE SIZE SHALL BE #12 AWG COPPER AND 90°C MINIMUM INSULATION.
 3. DO NOT CORNER ANY MORE THAN #12 LIGHTING CURRENT-CARRYING CONDUIT IN THE OFFICE AREAS WHEN #12 ARE COMBINED.
 4. ALL LIGHTING LAYOUTS AND EXACT LOCATIONS OF LUMINAIRES SHALL BE CHECKED AT CONSTRUCTION TIME AND PRIOR TO INSTALLATION WITH THE ENGINEER AND GENERAL CONTRACTOR FOR THEIR APPROVAL. IT SHALL BE THE RESPONSIBILITY OF THE CONTRACTOR TO VERIFY THAT ALL LUMINAIRE ARE BEING BLOCKED BY OTHER TRADES OR OWNERS' EQUIPMENT, PIPES, DUCTS, ETC.
 5. REFER TO THE REFRIGERATION AREA PENETRATION DETAIL ON DRAWING E.T.1.
 6. ALL SHARED LUMINAIRES SHALL BE CONNECTED TO EMERGENCY PANEL. "EM" LOCKED IN THE EMERGENCY LIGHTING ROOM. PROVIDE #10 AWG AND DEDICATED 3/4" CONDUITS THROUGHOUT THE EMERGENCY CIRCUITS.
 7. CONNECT ALL LIGHTING CIRCUITS TO LIGHTING PANEL HL.

EXISTING TO REMAIN
 REFER TO E2.2

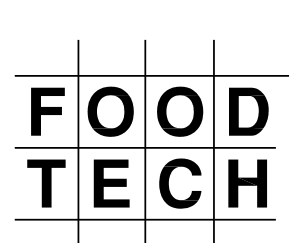


ACTION	DATE	DESCRIPTION
0	5/5/05	RELEASED FOR PERMITTING

Process Enhancements for:
BARBER FOODS
 Portland, Maine

**PARTIAL LIGHTING
 FLOOR PLAN**

PLANNERS • ENGINEERS • BUILDERS
FOOD TECH STRUCTURES, LLC
 2100 WASHINGTON STREET
 HANOVER, MA 02339
 Tel: (781) 261-9700
 Fax: (781) 261-9701



DATE : 5-6-05
 DESIGNED BY: VPM
 DRAWN BY: JDF
 CHECKED BY: VPM

E2.4

0412A