



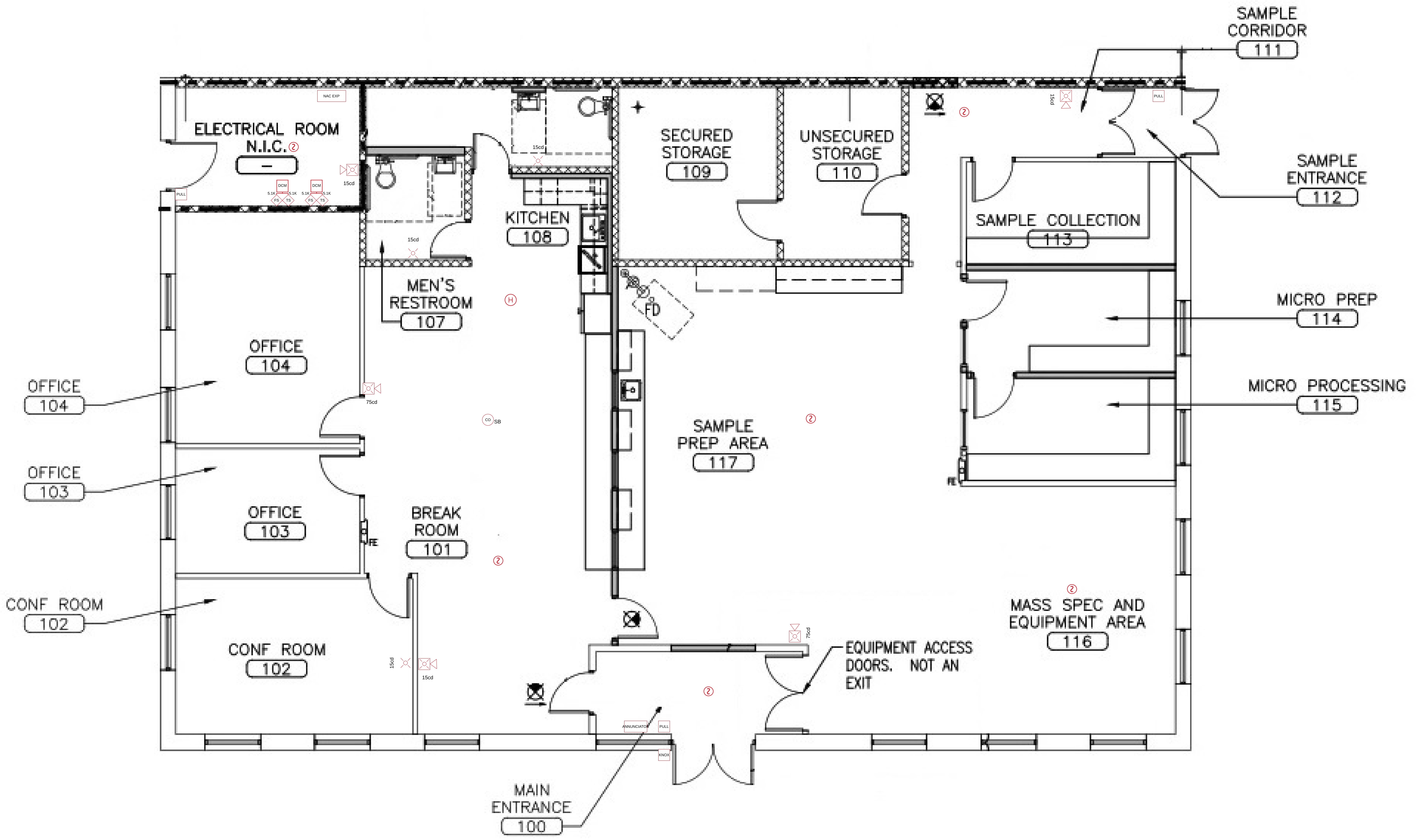
Reviewed for Code Compliance
Permitting and Inspections Department
Approved with Conditions

03/17/2020

PROTECTION PROFESSIONALS
DATE 8/8/19
REVISION: 1.0
66 MILLIKEN
NOVA ANALYTICS
SCALE: NS
SHEET: 1 OF 3
DESIGNER: PROTECTION PROFESSIONALS

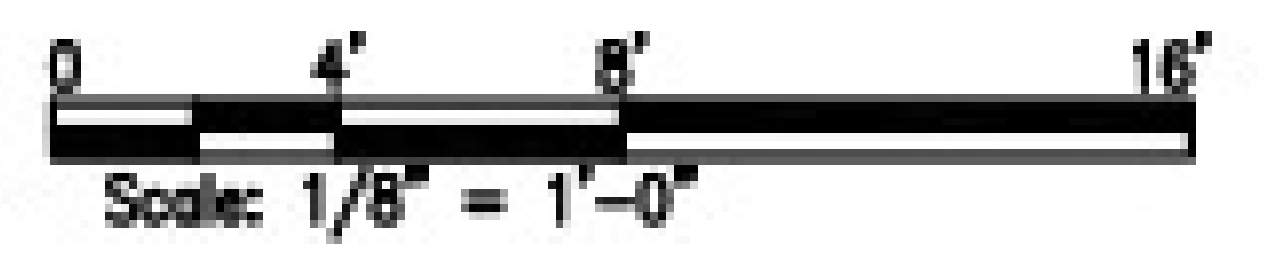


CO RF WIRELESS	ISOLATOR BASE
SMOKE RF WIRELESS	HEAT RF WIRELESS
SINGLE INPUT MODULE	STROBE
SOUNDER BASE	15cd HORN STROBE
HEAT DETECTOR	15cd WEATHER PROOF HORN STROBE
DUAL MODULE	75cd MINI HORN
MANUAL PULL STATION	CEILING MOUNT STROBE
CO DETECTOR	15cd SPEAKER STROBE
MICRO MODULE	75cd
SMOKE DETECTOR	SPRINKLER TAMPER SWITCH
RELAY MODULE	SPRINKLER WATERFLOW SWITCH
ISOLATOR MODULE	



GENERAL NOTES
 A) FIRE ALARM SYSTEM WIRING SHALL COMPLY WITH THE NATIONAL ELECTRIC CODE, APPLICABLE STATE AND LOCAL CODES AND SHALL BE COORDINATED WITH THE LOCAL AUTHORITY HAVING JURISDICTION.
 B) CAUTION, DO NOT CONNECT ANY POWER TO THE CONTROL PANEL (BATTERIES OR 120VAC) UNTIL ALL FIELD WIRING HAS BEEN TESTED.
 C) DO NOT INSTALL FIRE ALARM CONTROL PANEL OR ANY ADDRESSABLE DEVICES IN UNHEATED SPACE.
 D) DO NOT INSTALL ANY AC CURRENT CARRYING CONDUCTORS CLOSE TO OR IN THE SAME RACEWAY WITH FIRE ALARM SYSTEM CONDUCTORS.
 E) SOLID LINES REPRESENT CONNECTIONS MADE BY THE SYSTEM INSTALLER.
 F) ALL RELAYS ARE SHOWN IN NORMAL SUPERVISORY CONDITION. ALL RELAYS ARE FORM "C" TYPE.

INSTALLATION NOTES
 A) SMOKE DETECTORS SHALL NOT BE MOUNTED ANY CLOSER THAN 5' FROM ANY AIR DUCT OPENINGS.
 B) ELEVATOR LOBBY SMOKE SHALL BE MOUNTED WITHIN 10' OF THE ELEVATOR DOOR.
 C) MANUAL PULL STATIONS SHALL BE MOUNTED PER ADA REQUIREMENTS: 48" AFF OR 42" AFF TO COMPLY WITH SIDE/FRONT REACH REQUIREMENTS.
 D) WALL MOUNTED HORN STROBES AND STROBES SHALL BE MOUNTED 5' FROM CEILING, OR 96" TO 80" AFF TO THE CENTER OF THE STROBE.
 E) HORN STROBES AND STROBES SHALL BE MOUNTED 15" FROM THE CORNER OF THE WALL, IF THIS IS NOT POSSIBLE, DEVICE SHALL BE CENTERED ON THAT WALL.
 F) CEILING MOUNTED HALLWAY DEVICES SHALL BE LOCATED IN A SYMMETRICAL MANNER DOWN THE CENTER OF THE HALLWAY WHEN POSSIBLE.



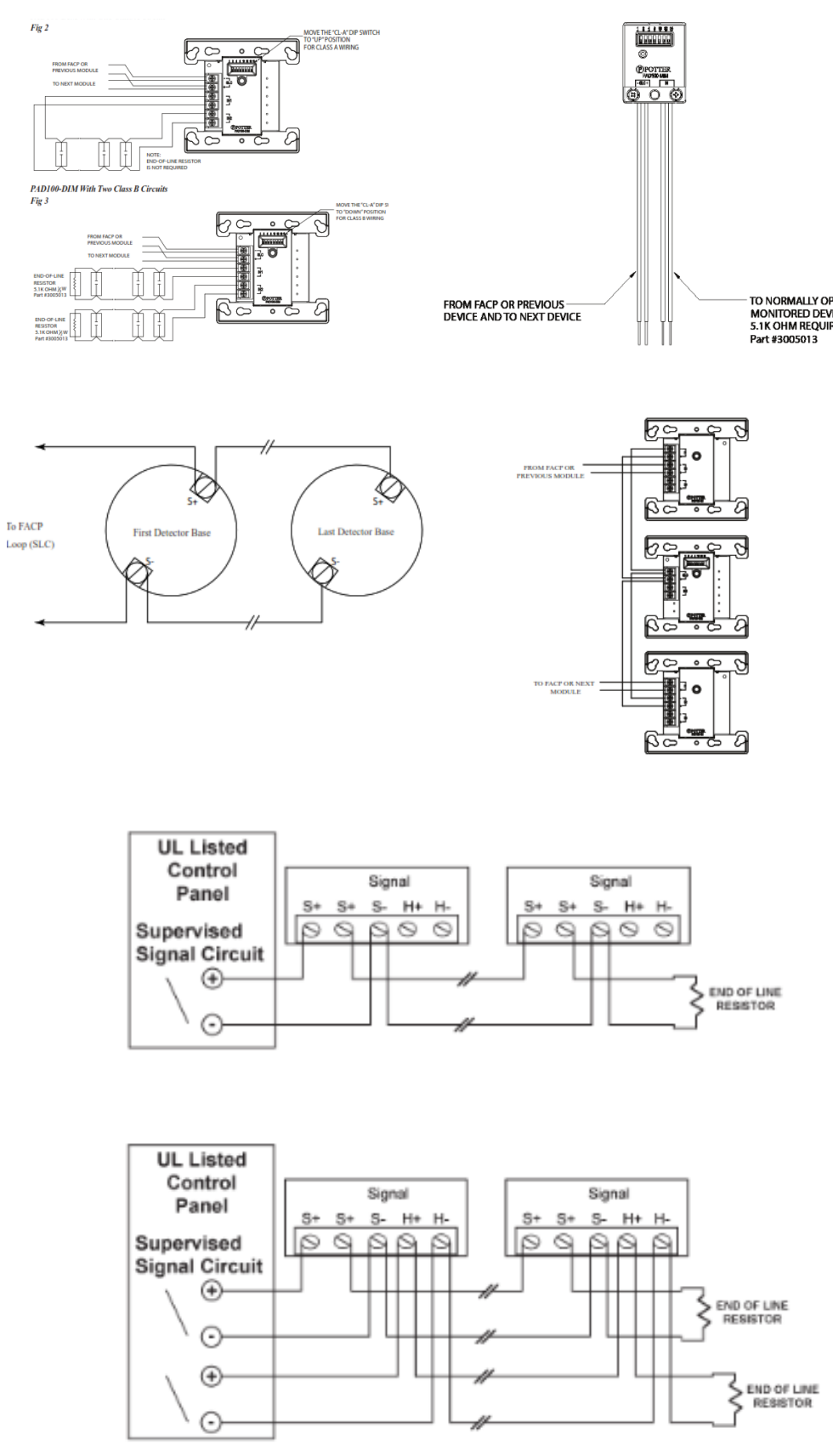
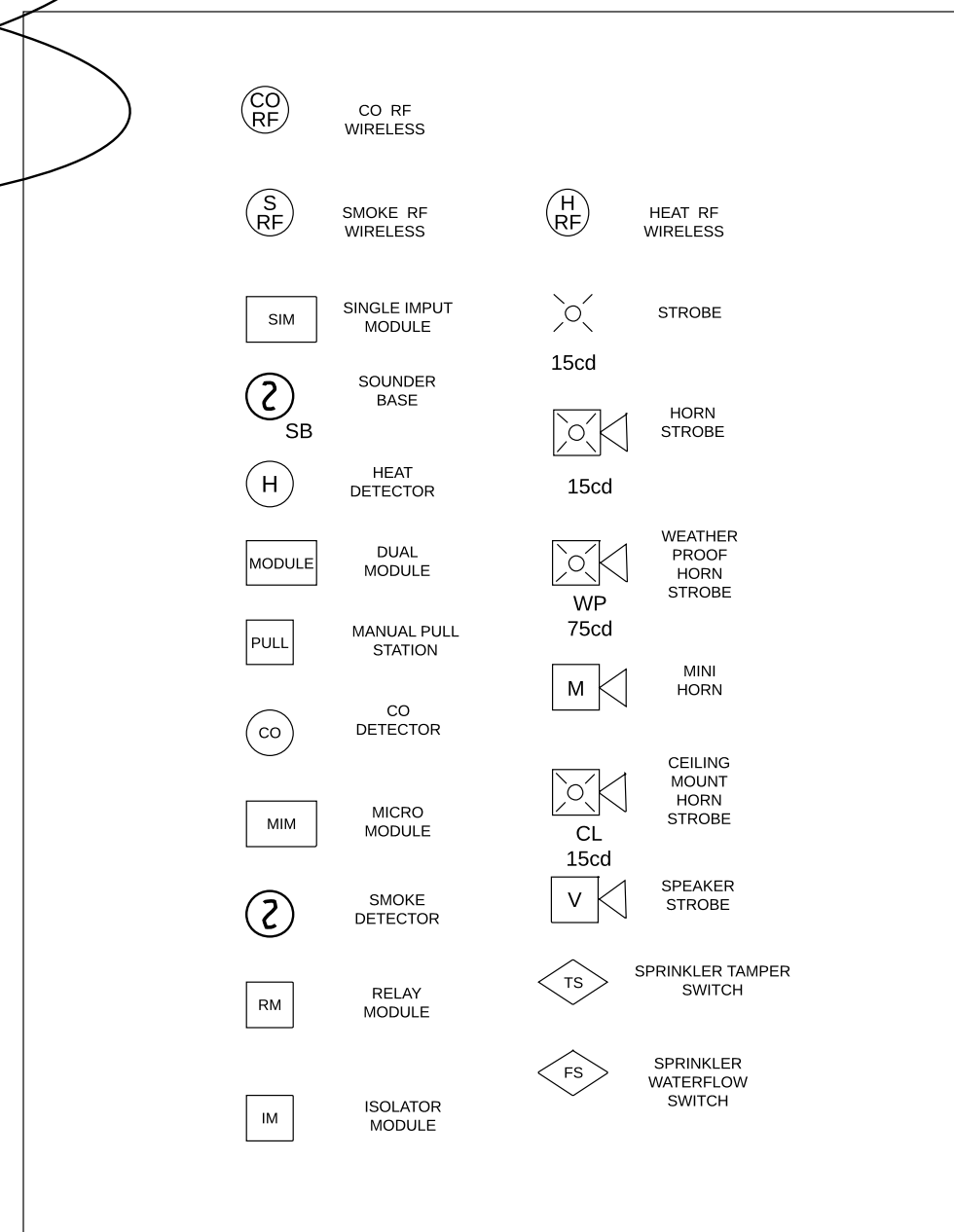
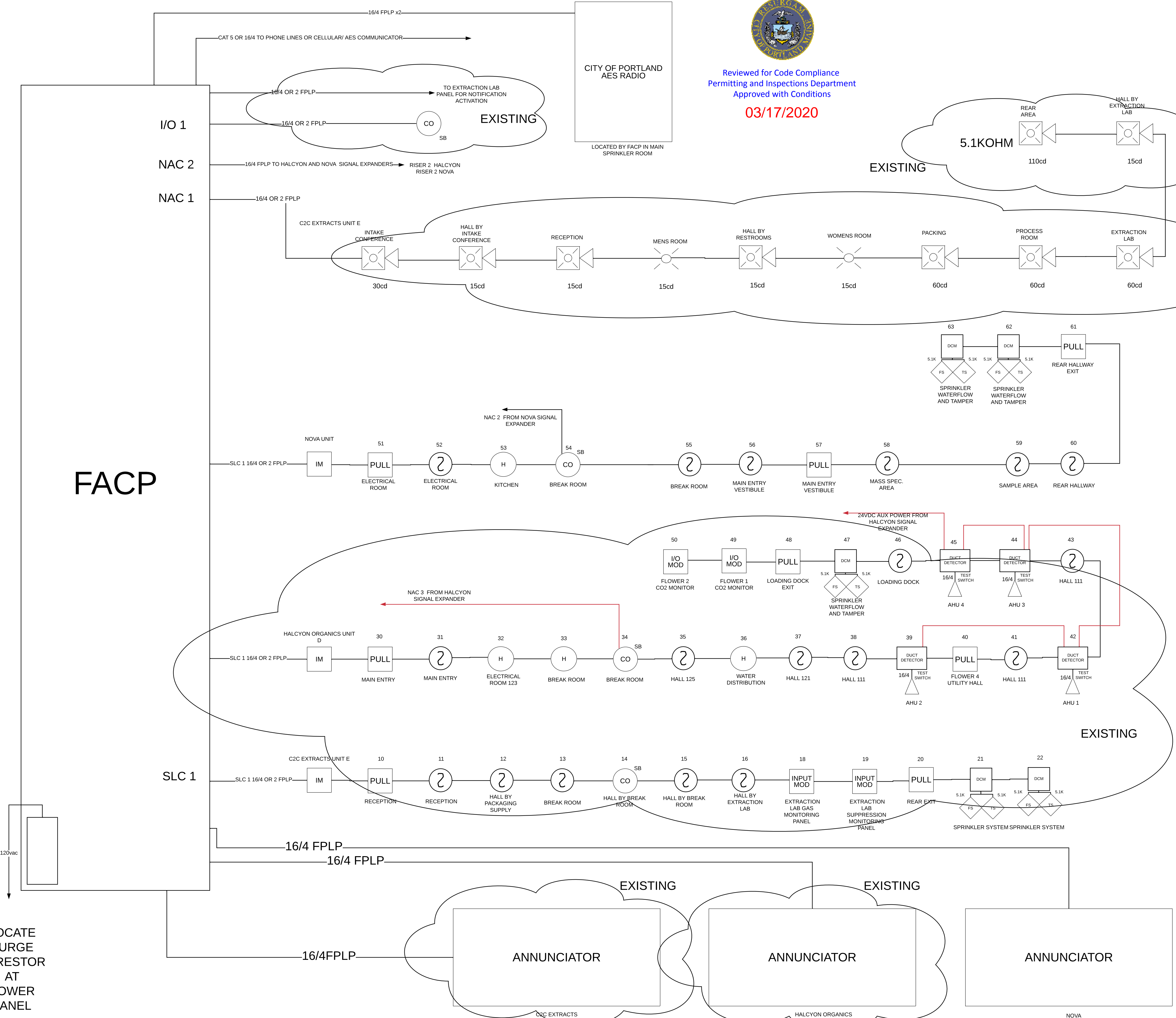


Reviewed for Code Compliance
Permitting and Inspections Department
Approved with Conditions
03/17/2020



GENERAL NOTES
A) FIRE ALARM SYSTEM WIRING SHALL COMPLY WITH THE NATIONAL ELECTRIC CODE, APPLICABLE STATE AND LOCAL CODES AND SHALL BE COORDINATED WITH THE LOCAL AUTHORITY HAVING JURISDICTION.
B.) CAUTION: DO NOT CONNECT ANY POWER TO THE CONTROL PANEL (BATTERIES OR 120VAC) UNTIL ALL FIELD WIRING HAS BEEN TESTED.
C.) DO NOT INSTALL FIRE ALARM CONTROL PANEL OR ANY ADDRESSABLE DEVICES IN UNHEATED SPACE.
D.) DO NOT INSTALL ANY AC CURRENT CARRYING CONDUCTORS CLOSE TO OR IN THE SAME RACEWAY WITH FIRE ALARM SYSTEM CONDUCTORS.
E.) SOLID LINES REPRESENT CONNECTIONS MADE BY THE SYSTEM INSTALLER.
F.) ALL RELAYS ARE SHOWN IN NORMAL SUPERVISORY CONDITION. ALL RELAYS ARE FORM "C" TYPE.

INSTALLATION NOTES
A) SMOKE DETECTORS SHALL NOT BE MOUNTED ANY CLOSER THAN 3" FROM ANY AIR DUCT OPENINGS.
B) ELEVATOR LOBBY SMOKE SHALL BE MOUNTED WITHIN 10' OF THE ELEVATOR DOOR.
C) MANUAL PULL STATIONS SHALL BE MOUNTED PER ADA REQUIREMENTS: 48" AFF OR 42" AFF TO COMPLY WITH SIDEFRONT REACH REQUIREMENTS.
D) WALL MOUNTED HORN STROBES AND STROBES SHALL BE MOUNTED 6" FROM CEILING, OR 96" TO 80" AFF TO THE CENTER OF THE STROBE.
E) HORN STROBES AND STROBES SHALL BE MOUNTED 15" FROM THE CORNER OF THE WALL. IF THIS IS NOT POSSIBLE, DEVICE SHALL BE CENTERED ON THAT WALL.
F) CEILING MOUNTED HALLWAY DEVICES SHALL BE LOCATED IN A SYMMETRICAL MANNER DOWN THE CENTER OF THE HALLWAY WHEN POSSIBLE.



LOCATE SURGE ARRESTOR AT POWER PANEL



Reviewed for Code Compliance
Permitting and Inspections Department
Approved with Conditions

03/17/2020

PROTECTION
PROFESSIONALS

DATE 8/7/19

REVISION:
1.0

NOVA
ANALYTIC
LABS
66 MILLIKEN
STREET
PORTLAND,
ME 04103

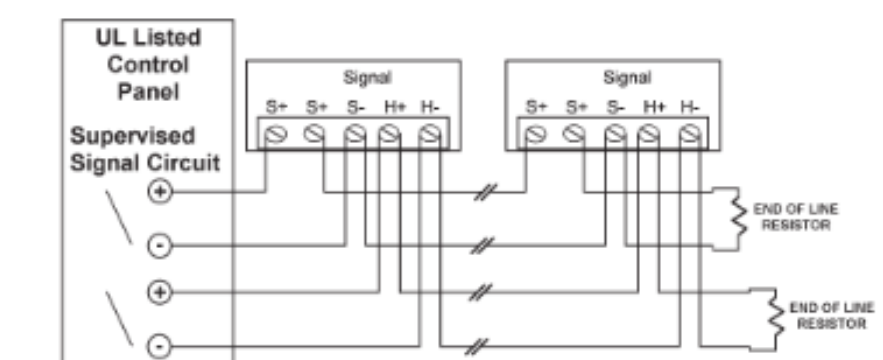
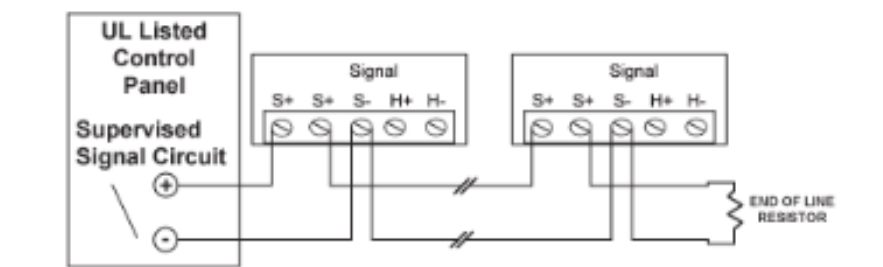
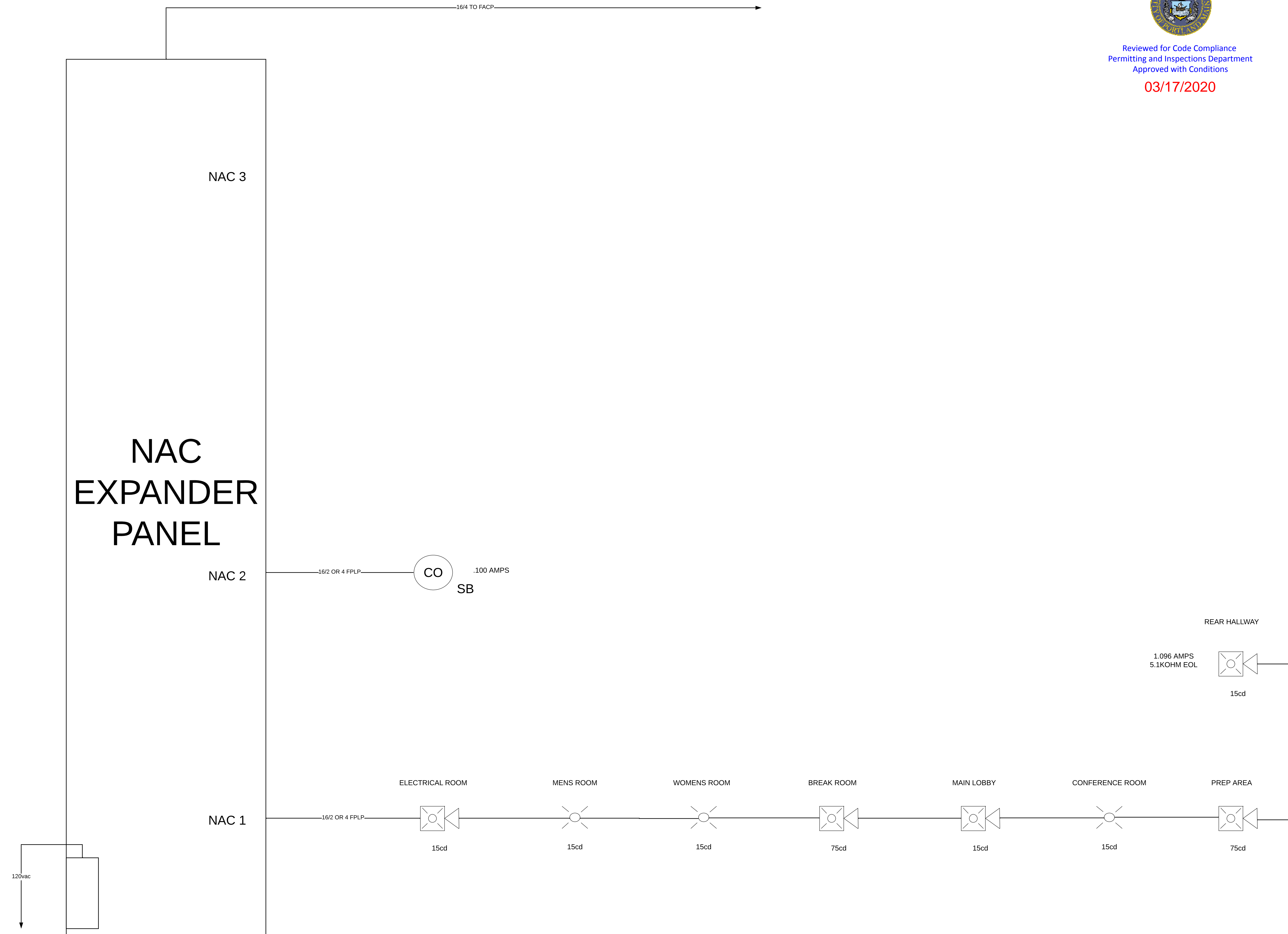
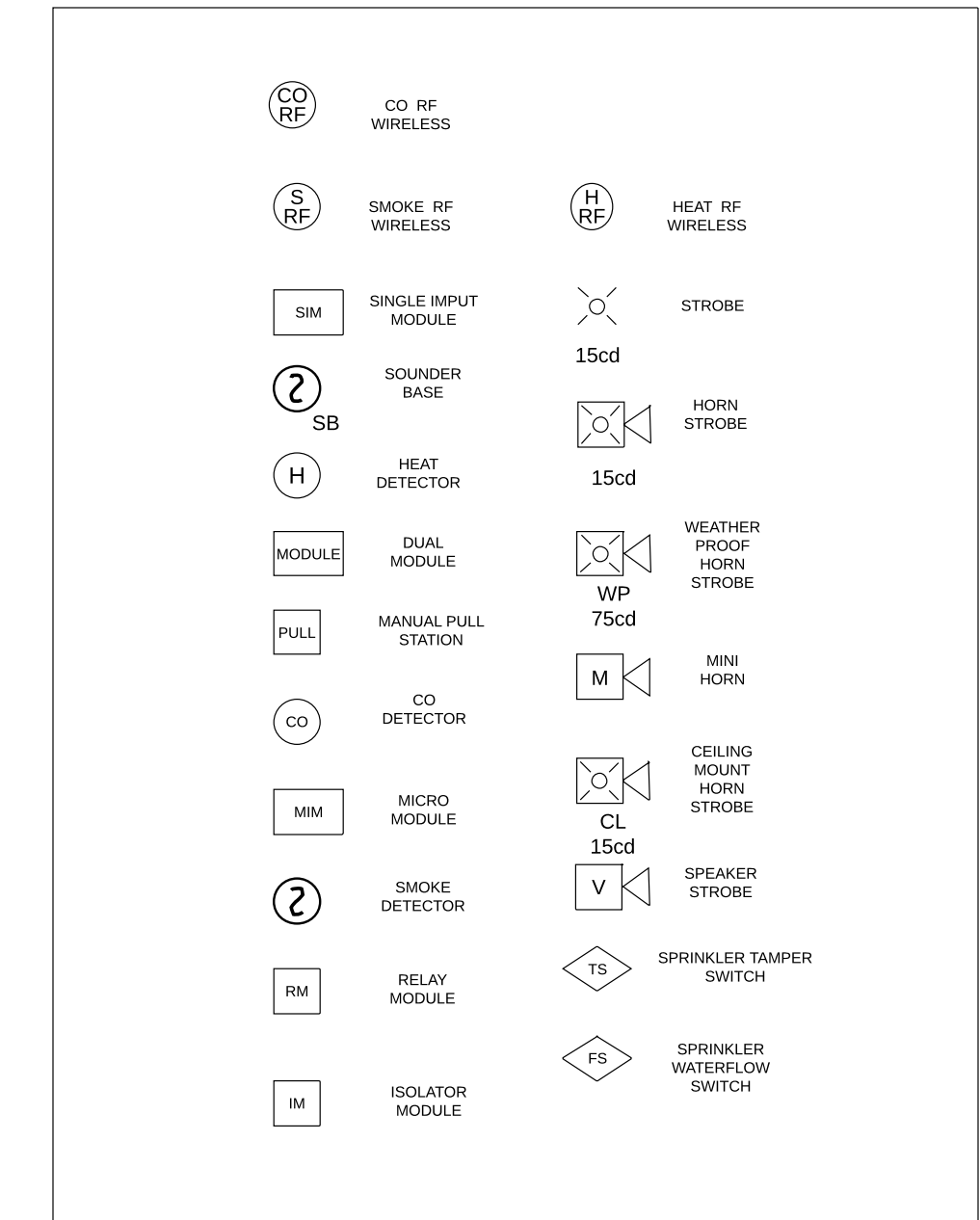
SCALE: NS

SHEET: 3 OF 3

DESIGNER:
PROTECTION
PROFESSIONALS



- GENERAL NOTES
- FIRE ALARM SYSTEM WIRING SHALL COMPLY WITH THE NATIONAL ELECTRIC CODE, APPLICABLE STATE AND LOCAL CODES AND SHALL BE COORDINATED WITH THE LOCAL AUTHORITY HAVING JURISDICTION.
 - CAUTION: DO NOT CONNECT ANY POWER TO THE CONTROL PANEL (BATTERIES OR 120VAC) UNTIL ALL FIELD WIRING HAS BEEN TESTED.
 - DO NOT INSTALL FIRE ALARM CONTROL PANEL OR ANY ADDRESSABLE DEVICES IN UNHEATED SPACE.
 - DO NOT INSTALL ANY AC CURRENT CARRYING CONDUCTORS CLOSE TO OR IN THE SAME RACEWAY WITH FIRE ALARM SYSTEM CONDUCTORS.
 - SOLID LINES REPRESENT CONNECTIONS MADE BY THE SYSTEM INSTALLER.
 - ALL RELAYS ARE SHOWN IN NORMAL SUPERVISORY CONDITION. ALL RELAYS ARE FORM "C" TYPE.
- INSTALLATION NOTES
- SMOKE DETECTORS SHALL NOT BE MOUNTED ANY CLOSER THAN 3' FROM ANY AIR DUCT OPENINGS.
 - ELEVATOR LOBBY SMOKE SHALL BE MOUNTED WITHIN 10' OF THE ELEVATOR DOOR.
 - MANUAL PULL STATIONS SHALL BE MOUNTED PER ADA REQUIREMENTS: 48" AFF OR 42" AFF TO COMPLY WITH SIDEFRONT REACH REQUIREMENTS.
 - WALL MOUNTED HORN STROBES AND STROBES SHALL BE MOUNTED 6" FROM CEILING, OR 96" TO 80" AFF TO THE CENTER OF THE STROBE.
 - HORN STROBES AND STROBES SHALL BE MOUNTED 15" FROM THE CORNER OF THE WALL. IF THIS IS NOT POSSIBLE, DEVICE SHALL BE CENTERED ON THAT WALL.
 - CEILING MOUNTED HALLWAY DEVICES SHALL BE LOCATED IN A SYMMETRICAL MANNER DOWN THE CENTER OF THE HALLWAY WHEN POSSIBLE.



LOCATE
SURGE
ARRESTOR
AT
POWER
PANEL