

LNC2 SERIES

Cat.#

Job

Type



HUBBELL
Outdoor Lighting

Approvals

SPECIFICATIONS

The small sized LNC2 is designed for perimeter illumination for safety, security and identification. No uplight and prismatic lenses offer neighbor friendly lighting at typical mounting heights of 8-15'. Units have protective polyester finish for long lasting appearance. Ideal for schools, factories, hospitals, warehouses and retail applications. Energy efficient LEDs provide up to 85% energy savings when compared to traditional light sources with little to no maintenance.

Construction:

Rugged die-cast aluminum housing protects components and provides an architectural appearance. Casting thermally conducts LED heat to optimize performance and long life. Powder paint finish provides durability in outdoor environments.

Electrical:

- 120V-277V universal voltage 50/60Hz 0-10V dimming drivers
- 347V and 480V dimmable driver option in 12L-070 configuration
- Minimum operating temperature is -40°C/-40°F (excludes 12L-035 and P15 configurations)
- Drivers have greater than .90 power factor and less than 20% Total Harmonic Distortion
- Driver RoHS and IP66
- 10kA surge protector

LED(s) CCT:

- 3000K CCT nominal, 4000K CCT nominal, 5000K CCT nominal (70 CRI)
- 9, 12 and 18 LED configurations available see pages 2 and 3 for electrical and photometric details

Optical:

Zero uplight distributions using individual acrylic LED optics provide IES type II, III and IV distributions. Optional (CS) acrylic diffuser available for reduced glare. Prismatic refractor lens provides ~10% uplight for increased vertical FC and forward light projection ideal for security lighting.

Lumen Maintenance:

L96 at 60,000hrs (Projected per IESNA TM-21-11), see table on page 2 for all values

Installation:

Quick-mount adapter provides easy installation to wall or to recessed junction boxes (4" square junction box). Designed for direct j-box mount. Optional 1/2" conduit hubs available (standard for sensor, SiteSync and battery versions).

Options/Controls:

- Universal button photocontrol
- Occupancy sensor options available for complete on/off and dimming control
- SiteSync pre-commissioned wireless controls (with or without sensor)
- Integral Battery Backup provides emergency lighting for the required 90 minute path of egress
- Dual Driver and Dual Power Feed option for 18L-070 versions

Listings:

- Listed to UL1598 and CSAC22.2#250.0-24 for wet locations
- DesignLights Consortium® (DLC) qualified. Please refer to the DLC website for specific product qualifications at www.designlights.org
- Made-to-order versions are IP-65 rated

Warranty:

Five year limited warranty (for more information visit: <https://www.hubbell.com/hubbellightingci/en/warranty>)

PRODUCT IMAGE(S)



Standard 9, 12, and 18L Version*



Prismatic Version



Surface Conduit Hubs, Sensor & SiteSync Version

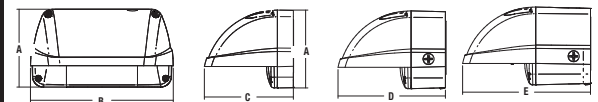


Battery Backup Version

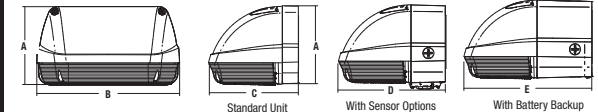
*Shown with CS acrylic diffuser

DIMENSIONS

9, 12, 18L units



Prismatic Refractor Units



A	B	C	D	E
5.54"	10.16"	6.33"	7.64"	9.10"
40.7 mm	258 mm	160.7 mm	194 mm	231 mm

BASE MODEL 7.0 lbs / 3.2 kg

PC SENSOR 7.5 lbs / 3.4 kg • BBU MODELS 9.5 lbs / 4.3 kg

SHIPPING INFORMATION (Stock)

Catalog Number	G.W(kg)/CTI	Carton Dimensions			Carton Qty. per Master Pack
		Length Inch (cm)	Width Inch (cm)	Height Inch (cm)	
LNC2-12LU	14.3 (6.5)	14.5 (37)	11.4 (29)	8.4 (21.5)	2
LNC2-18LU	14.8 (6.7)	14.9 (38)	11.4 (29)	8.4 (21.5)	2

CERTIFICATIONS/LISTINGS



*3000K and warmer CCTs only



ORDERING INFORMATION – ORDERING EXAMPLE: LNC2-12L-4K-070-3-1-DB-PCU-EH-CS

LNC2

SERIES	LED SELECTION	CCT/CRI	DRIVE CURRENT	VOLTAGE	MOUNTING	CONTROL OPTIONS	OPTIONS
LNC2 Small	9L 9 LEDs	3K 3000K, 70 CRI	070 700mA	U 120V-277V	Leave Blank for down position	SCP ^{4,5} Occupancy Sensor Programmable (Dim)	EH ³ Battery Backup Unit with Heater (-30°C)
LitePak	12L 12 LEDs	4K 4000K, 70 CRI	035 350mA (12L & 18L only)	1 120V	NV ² Inverted	PCU Universal Button Photocontrol	E ³ Battery Backup Unit (0°C)
LNC2	18L 18 LEDs	5K 5000K, 70 CRI	IES DISTRIBUTION				3 240V
	P15 15w Prismatic Refractor	AM Amber (350mA only)	2' IES Type II	4 277V	FINISH	SWP ⁶ SiteSync Pre-Commission	CS Comfort Shield (N/A with Prismatic Refractor)
	P25 25w Prismatic Refractor		3' IES Type III	5 ⁸ 480V		SWPM SiteSync Pre-6.7 Commission w/ OCC Sensor	2DR Dual Driver (18L - 700mA only)
	P35 35w Prismatic Refractor		4' IES Type IV	F ⁸ 347V		FT Forward Throw (Prismatic Refractor only)	2PF Dual Power Feed (18L - 700mA only)
					DB Dark Bronze Textured	SPECIFY SCP HEIGHT	CH Surface Conduit Hubs
					BL Black Textured	8F Up to 8ft mount height	
					GYS Gray Smooth	20F Up to 20ft mount height	
					PS Platinum Silver Smooth		
					WH White Textured		
					CC Custom Color		

1 IES distributions only available with 9L, 12L, and 18L versions
 2 Not available with occupancy sensor, battery backup or prismatic refractor options
 3 Must specify voltage (120 or 277 only for E & EH)
 4 Must order minimum of one remote control to program dimming settings, 0-10V fully adjustable dimming with automatic daylight calibration and different time delay settings, 120-277V only
 5 PCU option not applicable, included in sensor
 6 18L - 700mA versions only. Not available with 2DR or 2PF options. Must specify group and zone information at time of order
 7 Specify time delay; dimming level and mounting height
 8 12L - 700mA version only



HUBBELL
Outdoor Lighting

Hubbell Outdoor Lighting • 701 Millennium Boulevard • Greenville, SC 29607 • Phone: 864-678-1000

Due to our continued efforts to improve our products, product specifications are subject to change without notice.

© 2017 HUBBELL OUTDOOR LIGHTING, All Rights Reserved • For more information visit our website: www.hubbelloutdoor.com • Printed in USA August 7, 2018 10:08 AM LNC2-SPEC

STOCK ORDERING INFORMATION

Catalog Number	System Watts	Delivered Lumens	Distribution	Voltage	CCT	# Drivers/ Current	Weight lbs. (kg)	Finish	Options
LNC2-12LU-4K-3-1	29w	2,662	3	120-277V	4000K	1@700mA	7.0 (13.3)	Dark Bronze	*
LNC2-12LU-5K-3-1	29w	2,868	3	120-277V	5000K	1@700mA	7.0 (13.3)	Dark Bronze	*
LNC2-12LU-5K-3-1-PC-U	29w	2,868	3	120-277V	5000K	1@700mA	7.0 (13.3)	Dark Bronze	Photocell*
LNC2-18LU-4K-3-1	42w	3,806	3	120-277V	4000K	2@700mA	7.0 (13.3)	Dark Bronze	*
LNC2-18LU-5K-3-1	42w	4,106	3	120-277V	5000K	2@700mA	7.0 (13.3)	Dark Bronze	*
LNC2-18LU-5K-3-1-PC-U	42w	4,106	3	120-277V	5000K	2@700mA	7.0 (13.3)	Dark Bronze	Photocell*
LNC2-P35-4K-PCU	37w	4,025	FT	120-277V	4000K	1@900mA	7.0 (13.3)	Dark Bronze	Photocell
LNC2-P35-PCU	37w	4,108	FT	120-277V	5000K	1@900mA	7.0 (13.3)	Dark Bronze	Photocell

*Frosted acrylic comfort shield/lens included with unit

REPLACEMENT PART/ACCESSORIES

CATALOG NUMBER	DESCRIPTION
LNC2-CS	Frosted acrylic comfort shield/lens, reduces glare and improves uniformity with only 15% lumen reduction
SCP-REMOTE*	Remote control for SCP option. Order at least one per project to program and control fixtures

*Must order minimum of one remote control to program dimming settings, 0-10V fully adjustable dimming with automatic daylight calibration and different time delay settings, 120V or 277V only

PERFORMANCE DATA

Standard 9, 12 and 18L Versions

# OF LEADS	DRIVE CURRENT	SYSTEM WATTS	DIST. TYPE	5K (5000K nominal, 70 CRI)					4K (4000K nominal, 70 CRI)					3K (3000K nominal, 80 CRI)					
				LUMENS	LPW ¹	B	U	G	LUMENS	LPW ¹	B	U	G	LUMENS	LPW ¹	B	U	G	
9	700mA	21W	FT	2	2,083	97	1	0	1	2,072	97	1	0	1	1,927	90	1	0	1
				3	1,972	92	0	0	1	1,962	92	0	0	1	1,825	85	0	0	1
				4	2,097	98	0	0	1	2,087	98	0	0	1	1,941	91	0	0	1
12	350mA	14W	FT	2	1,513	110	0	0	1	1,506	109	0	0	1	1,440	104	0	0	1
				3	1,433	104	0	0	1	1,426	103	0	0	1	1,364	99	0	0	1
				4	1,524	110	0	0	1	1,543	112	0	0	1	1,476	107	0	0	1
	700mA	29W	FT	2	2,777	97	1	0	1	2,763	97	1	0	1	2,570	90	1	0	1
				3	2,629	92	1	0	1	2,616	91	1	0	1	2,433	85	1	0	1
				4	2,797	98	1	0	1	2,783	97	1	0	1	2,588	90	1	0	1
18	350mA	21W	FT	2	2,270	107	1	0	1	2,259	106	1	0	1	2,074	97	1	0	1
				3	2,149	101	0	0	1	2,138	100	0	0	1	1,963	92	0	0	1
				4	2,286	107	0	0	1	2,275	107	0	0	1	2,125	100	0	0	1
	700mA	43W	FT	2	4,261	99	1	0	1	4,240	98	1	0	1	3,943	91	1	0	1
				3	4,033	93	1	0	1	4,014	93	1	0	1	3,733	86	1	0	1
				4	4,290	99	1	0	1	4,270	99	1	0	1	3,971	92	1	0	1

Lumen values are from photometric tests performed in accordance with IESNA LM-79-08. Data is considered to be representative of the configurations shown. Actual performance may differ as a result of end-user environment and application. LNC2-12L battery mode produces 1,546 initial lumens. Meets UL924 90 minute discharge pattern.

PERFORMANCE DATA

Prismatic Refractor

# OF LEADS	DRIVE CURRENT	SYSTEM WATTS	DIST. TYPE	5K (5000K nominal, 70 CRI)					4K (4000K nominal, 70 CRI)					3K (3000K nominal, 80 CRI)				
				LUMENS	LPW ¹	B	U	G	LUMENS	LPW ¹	B	U	G	LUMENS	LPW ¹	B	U	G
1	350mA	13W	FT	1,741	132	0	3	2	1,706	129	0	3	2	1,648	125	0	3	2
	600mA	25W		2,929	117	1	3	2	2,806	112	1	3	2	2,773	111	1	3	2
	900mA	37W		4,108	112	1	3	3	4,025	110	1	3	3	3,889	106	1	3	3

PROJECTED LUMEN MAINTENANCE

Standard 9, 12 and 18L Versions

Ambient Temp.	OPERATING HOURS					
	0	25,000	50,000	TM-21-11 ¹ L96 60,000	100,000	L70 (hours)
25°C / 77°F	1.00	0.98	0.97	0.96	0.95	>791,000
40°C / 104°F	0.99	0.98	0.96	0.96	0.95	>635,000

1. Projected per IESNA TM-21-11 * (Nichia 219B, 700mA, 85°C Ts, 10,000hrs)
Data references the extrapolated performance projections for the LNC-12LU-5K base model in a 40°C ambient, based on 10,000 hours of LED testing per IESNA LM-80-08.

Prismatic Refractor

Ambient Temp.	OPERATING HOURS					
	0	25,000	50,000	TM-21-11 ¹ L96 60,000	100,000	L70 (hours)
25°C / 77°F	1.00	0.94	0.89	0.87	0.80	>160,000
40°C / 104°F	0.99	0.93	0.88	0.86	0.78	>150,000



Hubbell Outdoor Lighting • 701 Millennium Boulevard • Greenville, SC 29607 • Phone: 864-678-1000

Due to our continued efforts to improve our products, product specifications are subject to change without notice.

© 2017 HUBBELL OUTDOOR LIGHTING, All Rights Reserved • For more information visit our website: www.hubbelloutdoor.com • Printed in USA August 7, 2018 10:08 AM LNC2-SPEC

ELECTRICAL DATA

Standard 9, 12 and 18L Versions

# OF LEDs	DRIVE CURRENT (mA)	INPUT VOLTAGE (V)	CURRENT (Amps)	SYSTEM POWER (w)
9	700mA	120	0.18	21
		277	0.08	21
12	350mA	120	0.12	14
		277	0.05	14
	700mA	120	0.24	29
		277	0.10	29
		347	0.08	29
		480	0.06	29
18	350mA	120	0.18	21
		277	0.08	21
	700mA	120	0.36	43
		277	0.16	43

Prismatic Refractor

# OF LEDs	DRIVE CURRENT (mA)	INPUT VOLTAGE (V)	CURRENT (Amps)	SYSTEM POWER (w)
1	350mA	120	0.11	13
		277	0.05	13
	600mA	120	0.21	25
		277	0.09	25
	900mA	120	0.31	37
		277	0.13	37

LUMINAIRE AMBIENT TEMPERATURE FACTOR (LATF)

Standard 9, 12, 18L and Prismatic Versions

AMBIENT TEMPERATURE		LUMEN MULTIPLIER
0°C	32°F	1.02
10°C	50°F	1.01
20°C	68°F	1.00
25°C	77°F	1.00
30°C	86°F	1.00
40°C	104°F	0.99
50°C	122°F	0.98

Use these factors to determine relative lumen output for average ambient temperatures from 0-40°C (32-104°F).

NV - Inverted Mounting Options

(Requires Factory Installed lens Option)



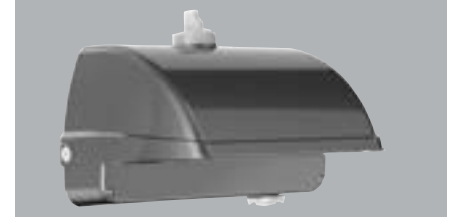
Inverted mounting capabilities for uplighting applications. Specially designed frosted acrylic diffuser option softens output, improves uniformity and protects LED lenses.

SCP - Programmable Occupancy Sensor



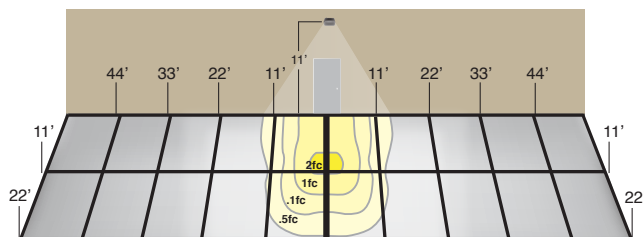
Sensor offers greater control and energy savings with SCP programmable sensor with adjustable delay and dimming levels (Factory default is 10%) Visit: <http://www.hubbellighting.com/solutions/controls/> for control application information

SWP & SWPM - SiteSync™



When ordering a fixture with the SiteSync lighting control option, additional information will be required to complete the order. The SiteSync Commissioning Form or alternate schedule information must be completed. This form includes Project locations Group information, and Operating schedules. For more detailed information please visit www.HubbellLighting.com/products/sitesync or contact Hubbell Lighting tech support at (800) 345-4928.

LNC2 – BATTERY BACK UP



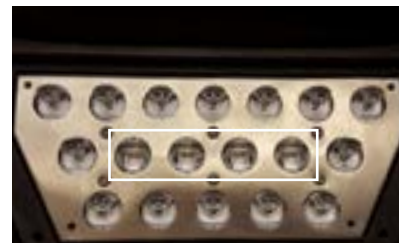
11' Mounting Height

Provides Life Safety Code average illuminance of 1.0 fc. Assumes open space with no obstructions and mounting height of 11'.

Diagrams for illustration purposes only, please consult factory for application layout.

Battery backup units consume 6 watts when charging a dead battery and 2 watts during maintenance charging. EH (units with a heater) consume up to an additional 8 watts when charging if the battery temp is lower than 10°C

E & EH EMERGENCY BATTERY BACKUP



Standard versions utilize 9, 12 or 18 High Power LEDs to generate 1,600 - 4,200 lumens in Normal Mode and use 4 LEDs for up to 700 lumens in Emergency Mode. Prismatic refractor versions utilize 1 COB LED to generate approximately 900 lumens in emergency mode.