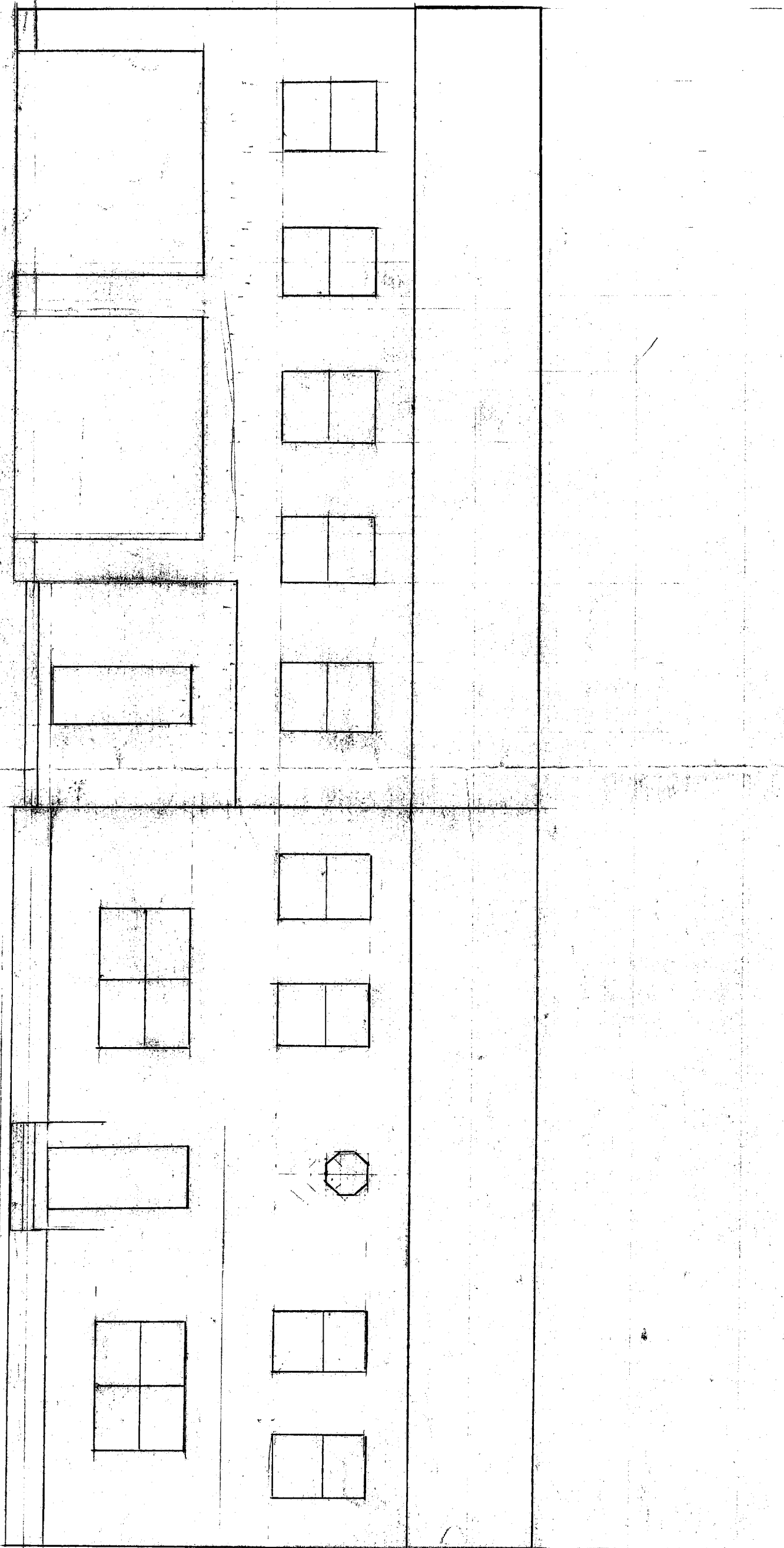
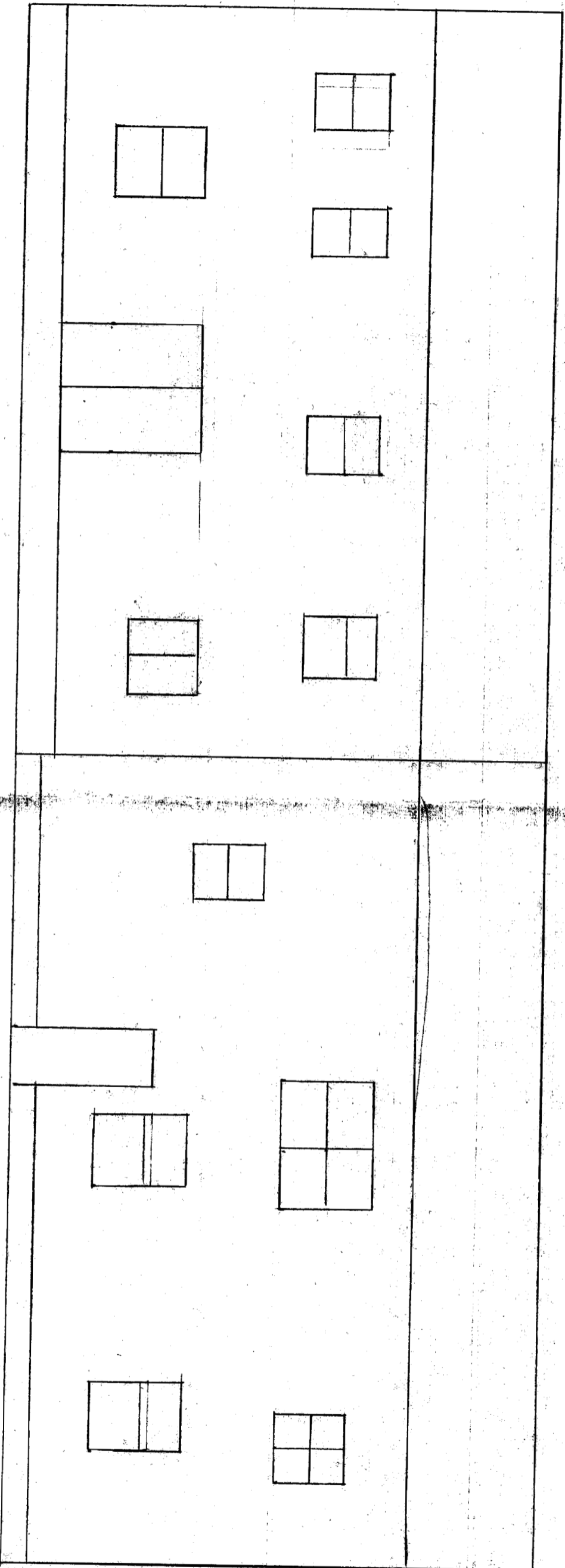


Front View



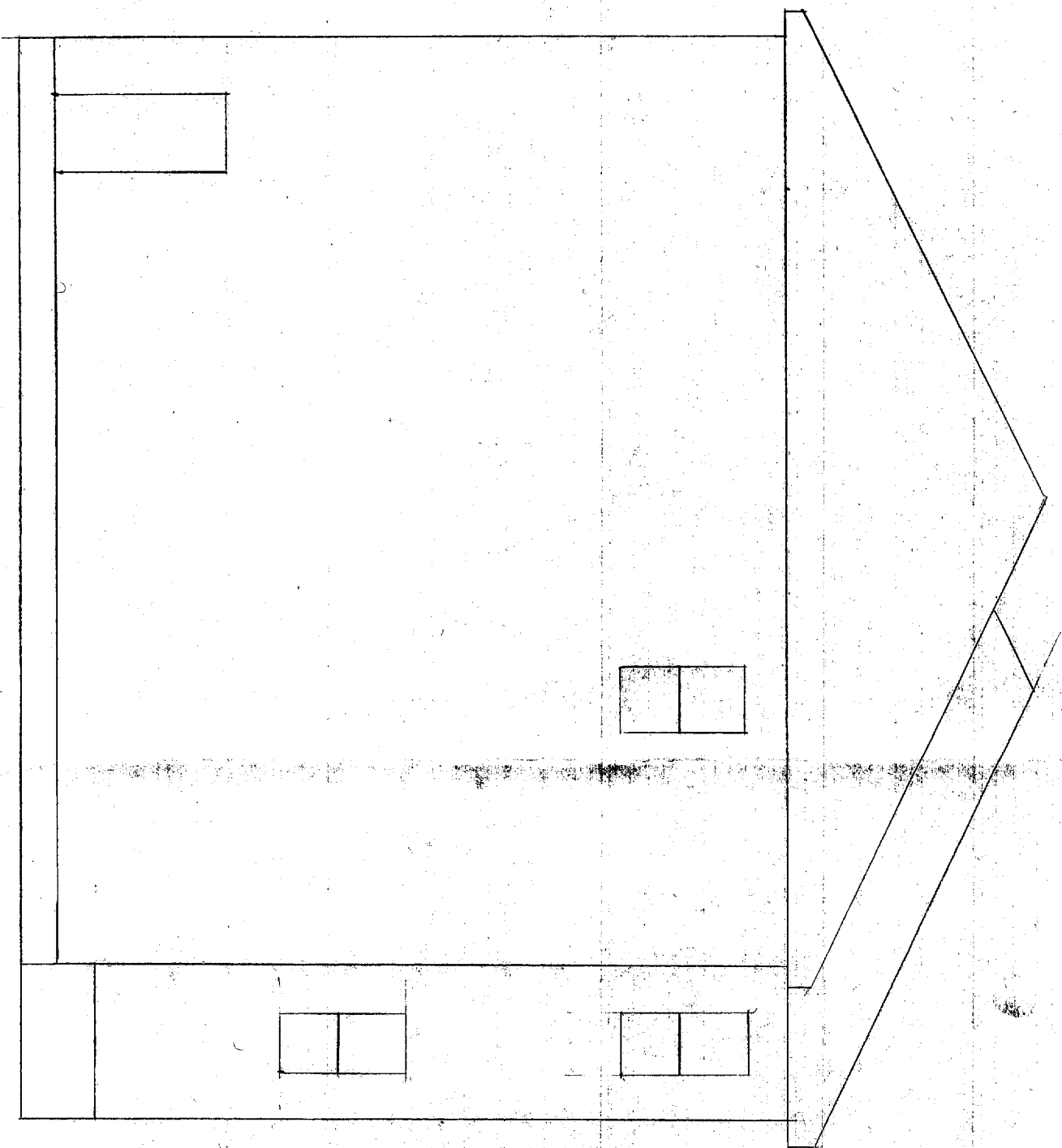
Scale $\frac{3}{16}'' = 1'$

Rear View



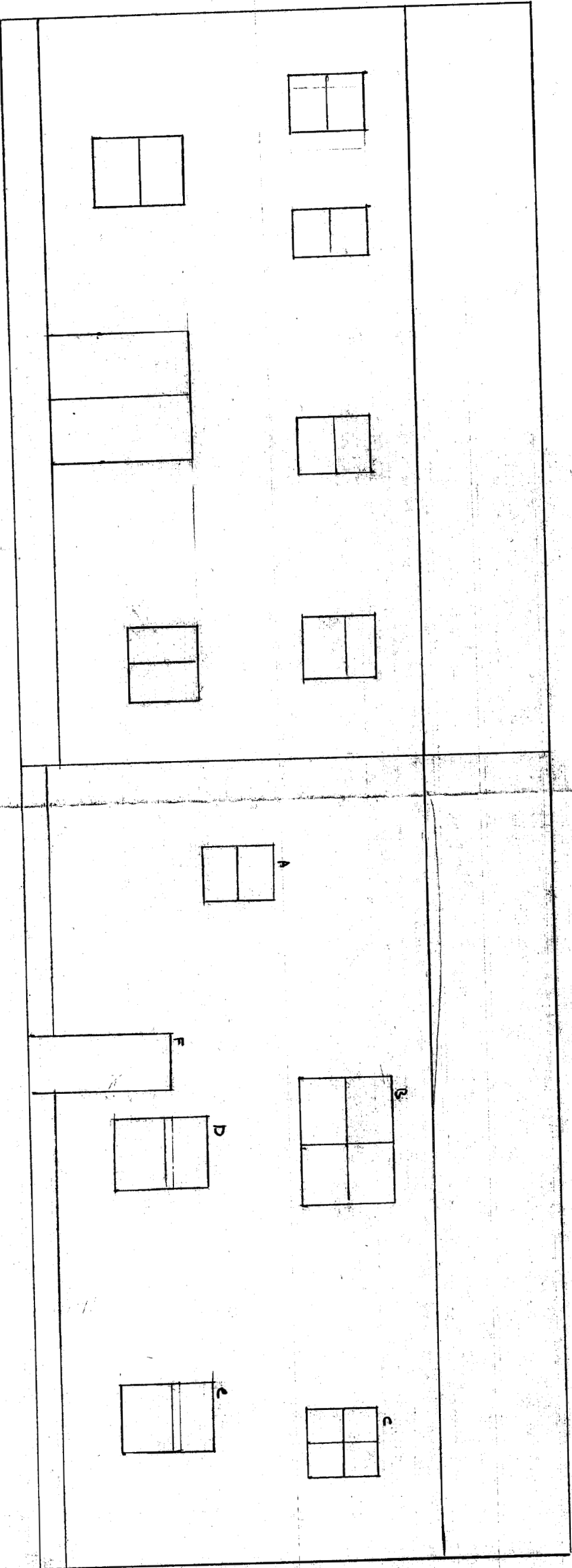
Scale $\frac{3}{16}'' = 1'$

Side View



Scale $\frac{1}{4}'' = 1'$

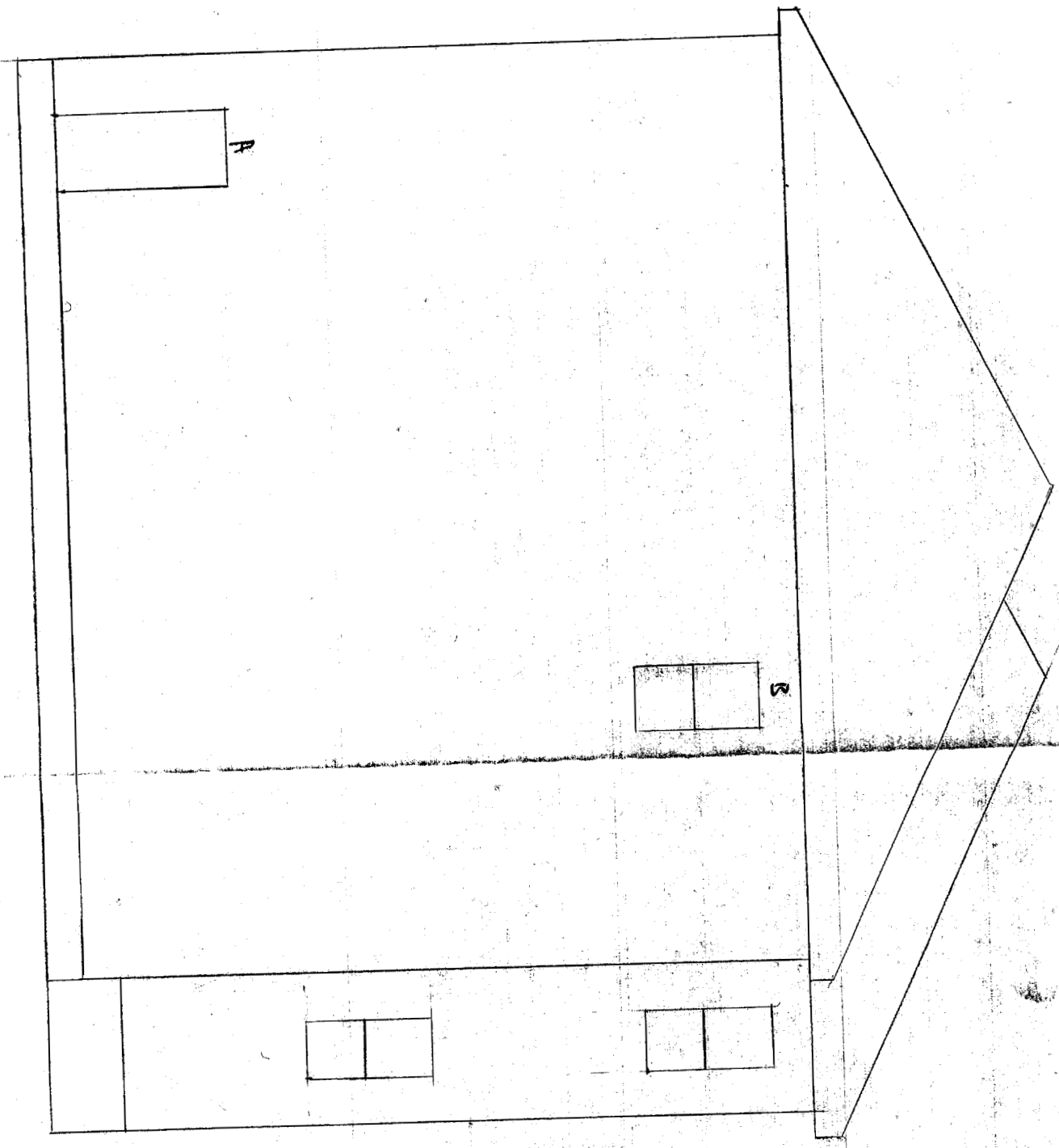
Rear View



A-F 3 2x10" leaders

Scale $\frac{3}{16}'' = 1'$

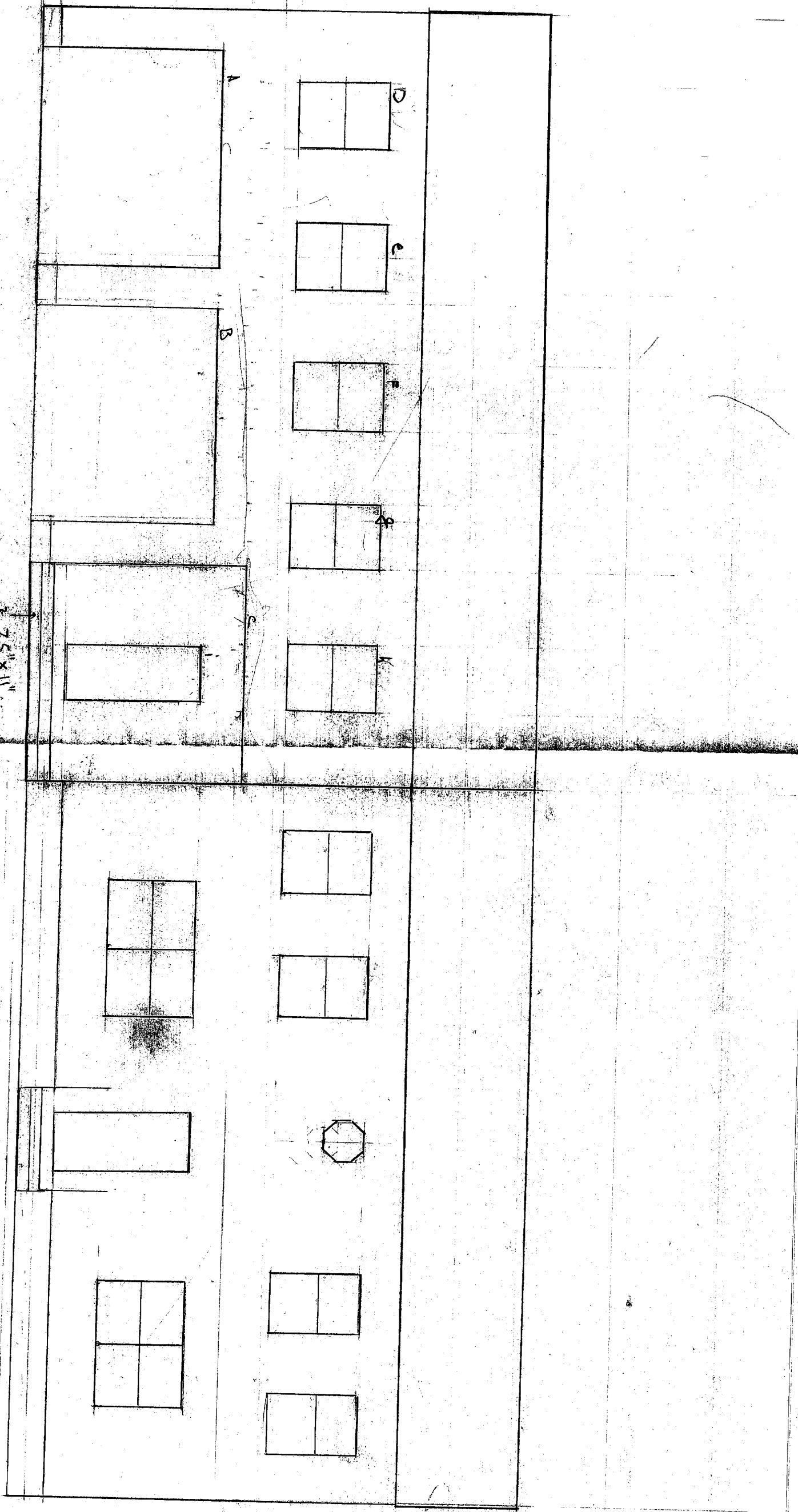
Side View



3 2x10 headers

Scale $\frac{1}{4}'' = 1'$

Front View



A-C preengined red beams
D-I 3 2x10" members

75" x 11" stairs

Scale 3/16" = 1'