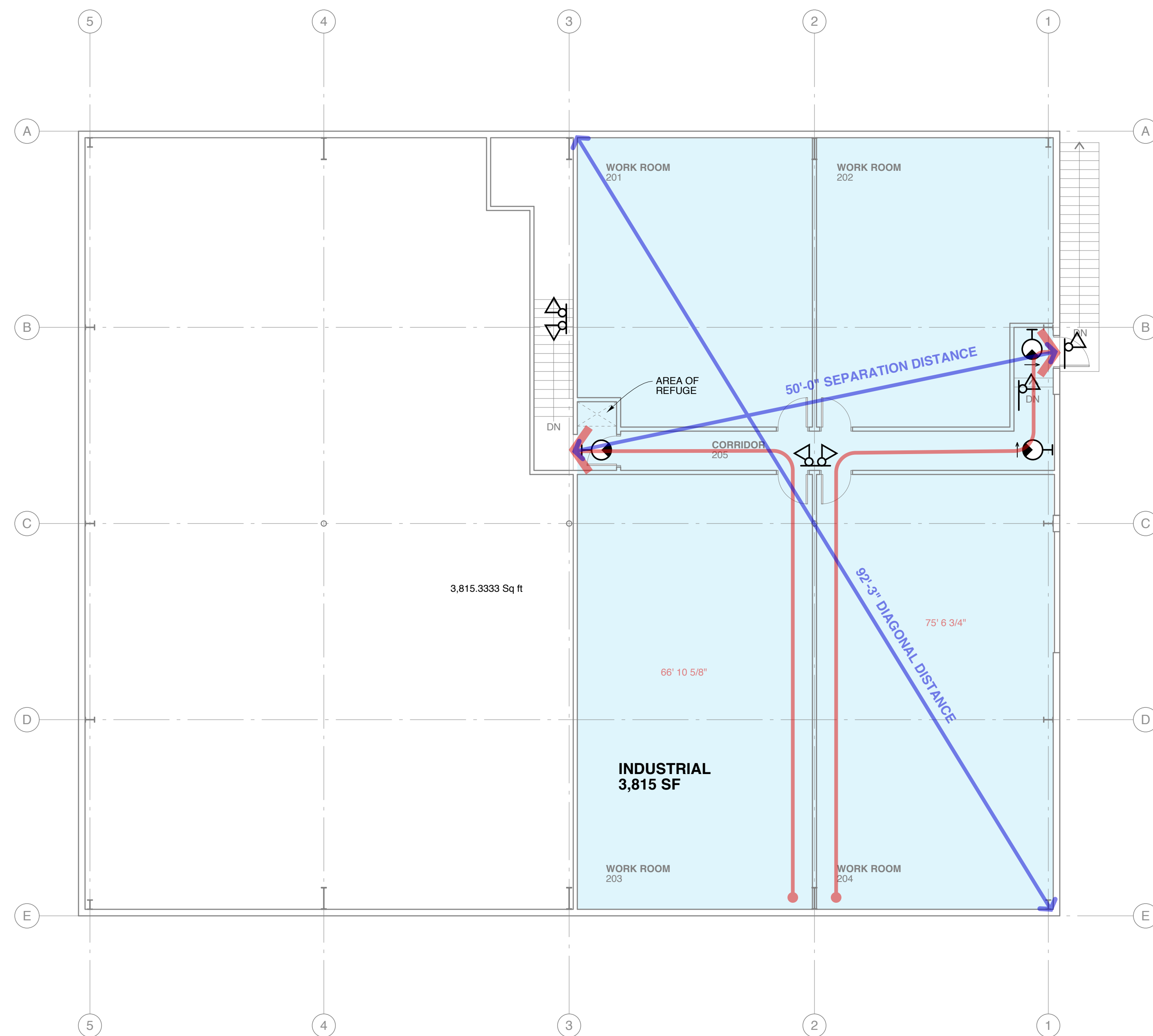


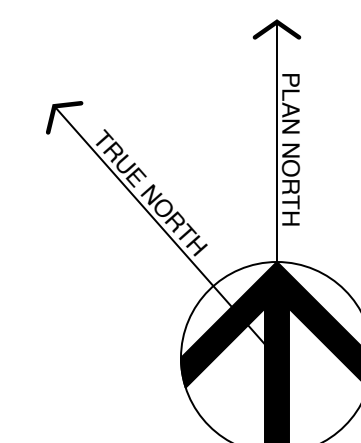
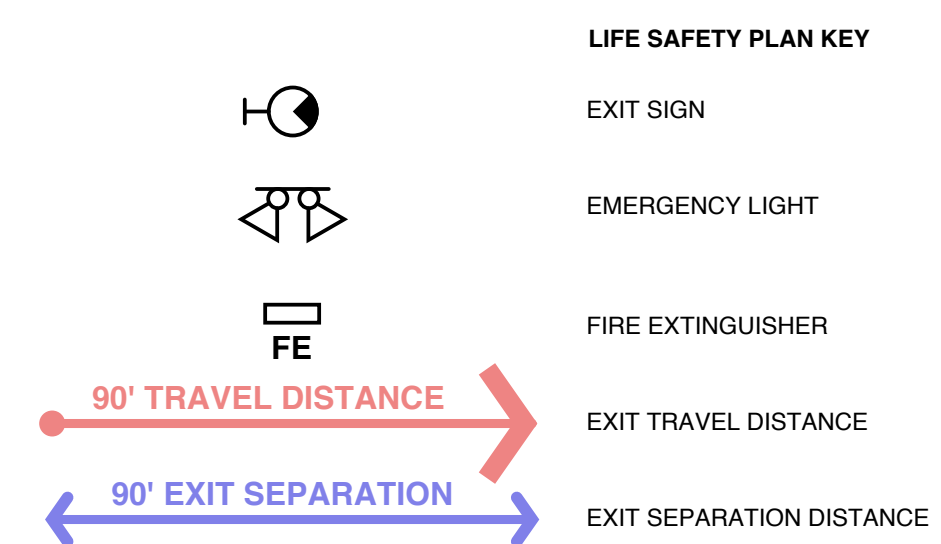
1 FIRST FLOOR LIFE SAFETY PLAN
 SCALE: 1/8" = 1'-0"
 2' 4' 8' 16'



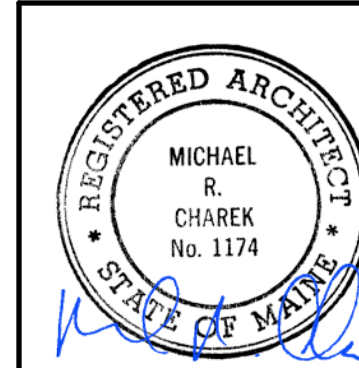
2 SECOND FLOOR LIFE SAFETY PLAN
 SCALE: 1/8" = 1'-0"
 2' 4' 8' 16'

IBC 2009 CODE DATA	
FLOOR AREA	7,761 SF FIRST FLOOR, 3,815 SF SECOND FLOOR
NUMBER OF STORIES	2
USE AND OCCUPANCY CLASSIFICATION - SECTION 311.2	FACTORY INDUSTRIAL F-1 MODERATE HAZARD
TYPE OF CONSTRUCTION - TABLE 601	II-B
FIRE RESISTANT CONSTRUCTION - TABLE 601:	
STRUCTURAL FRAME	0 HOUR
EXTERIOR BEARING WALLS	0 HOUR
INTERIOR BEARING WALLS	0 HOUR
EXTERIOR NONBEARING WALLS	0 HOUR
INTERIOR NONBEARING WALLS	0 HOUR
FLOOR CONSTRUCTION	0 HOUR
ROOF CONSTRUCTION	0 HOUR
FIRE RATING STAIR ENCLOSURES - SECTION 1022.1.1	1 HOUR
FIRE ALARM SYSTEM REQUIRED - SECTION 907	NOT REQUIRED
OCCUPANT LOAD - TABLE 1004.1.1	78 FIRST FLOOR, 39 SECOND FLOOR
MAXIMUM COMMON PATH OF TRAVEL DISTANCE - NFPA 101-2009 TABLE A7.6	50 FEET
MAXIMUM EXIT TRAVEL DISTANCE - TABLE 1016.1	200 FEET
FIRE RATED CORRIDORS - TABLE 1018.1	N/A
DEAD END CORRIDOR LENGTH - SECTION 1018.4	20 FEET
MINIMUM NUMBER OF EXITS - TABLE 1021.2	2 EACH FLOOR
FIRE EXTINGUISHERS	1 AT EACH EXIT 3-A 10-B-C
NOTES	

NFPA 101 2009 CODE DATA	
FLOOR AREA	7,761 SF FIRST FLOOR, 3,815 SF SECOND FLOOR
NUMBER OF STORIES	2
USE GROUP CLASSIFICATION - SECTION 3.3.178.15	INDUSTRIAL - ORDINARY HAZARD
TYPE OF CONSTRUCTION - NFPA 220	II (000)
FIRE RESISTANT CONSTRUCTION - NFPA 220:	
EXTERIOR BEARING WALLS	0 HOUR
INTERIOR BEARING WALLS	0 HOUR
COLUMNS	0 HOUR
BEAMS, GIRDERS, TRUSSES, AND ARCHES	0 HOUR
FLOOR CONSTRUCTION	0 HOUR
ROOF CONSTRUCTION	0 HOUR
EXIT STAIR ENCLOSURES - SECTION 7.1.3.2.1	1 HOUR
OCCUPANT LOAD - TABLE 7.3.1.2	78 FIRST FLOOR, 39 SECOND FLOOR
PROTECTION OF VERTICAL OPENINGS - SECTION 40.3.1.1	N/A
MINIMUM NUMBER OF EXITS - SECTION 40.2.4.1	2 EACH FLOOR
DEAD END CORRIDOR LENGTH - TABLE TABLE A7.6	50 FEET
MAXIMUM COMMON PATH OF TRAVEL DISTANCE - TABLE A7.6	50 FEET
MAXIMUM EXIT TRAVEL DISTANCE - TABLE A7.6	200 FEET
FIRE ALARM SYSTEM REQUIRED - SECTION 40.3.4.1	NOT REQUIRED
FIRE RATED CORRIDORS - SECTION 40.3.6	N/A
FIRE EXTINGUISHERS	1 AT EACH EXIT 3-A 10-B-C
NOTES	



Michael Charek Architects
 25 Hartley Street
 Portland, Maine 04103
 (207) 761-0656



**Tenant Fit-Up, Unit #15
 Second Tee Business Park**
 71 Caddis Lane
 Portland, ME 04103

Title
 LIFE SAFETY
 AND CODE
 PLANS

Scale: AS NOTED

Date: 9/6/17

Revisions

Sheet
A2