

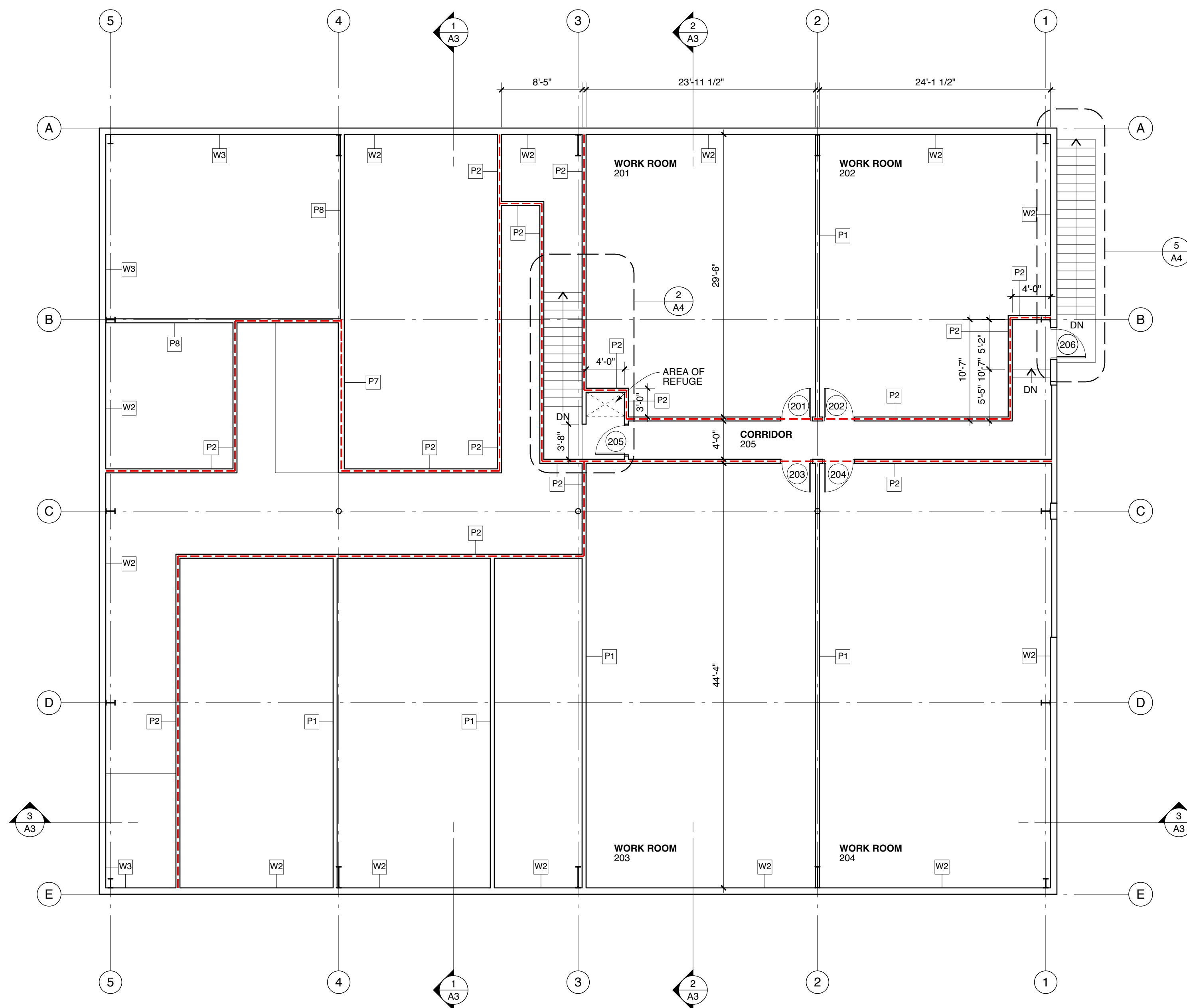
1 FIRST FLOOR PLAN
 SCALE: 1/8" = 1'-0"
 2' 4' 8' 16'

PARTITION TYPES - SEE DETAIL SECTIONS ON SHEET A5 & A6.
NOTE - SELECT STUD SPACING AND GAUGE FROM MANUFACTURERS' CORRESPONDING LIMITING HEIGHTS CHARTS. ON PARTITIONS WHERE DRYWALL IS NOT PRESENT ON BOTH SIDES, PROVIDE MANUFACTURERS' RECOMMENDED MECHANICAL BRIDGING AT 48" O.C. VERTICALLY.

- P1** 3 5/8" STEEL STUD FRAMING
CLASS "A" PVC PANEL BOTH SIDES
PARTITION HEAD UP TO ROOF OR FLOOR STRUCTURE ABOVE
- P2** 1-HOUR FIRE RESISTANCE RATED ASSEMBLY
3 5/8" STEEL STUD FRAMING
5/8" FIRE CODE GYPSUM BOARD BOTH SIDES
CLASS "A" PVC PANEL BOTH SIDES
PARTITION HEAD UP TO ROOF OR FLOOR STRUCTURE ABOVE
- P3** LOAD BEARING - SEE STRUCTURAL FOR MORE DETAIL
3 5/8" STEEL STUD FRAMING
5/8" GYPSUM BOARD BOTH SIDES
CLASS "A" PVC PANEL BOTH SIDES
PARTITION HEAD SUPPORTING FLOOR STRUCTURE ABOVE
- P4** 1-HOUR FIRE RESISTANCE RATED ASSEMBLY
LOAD BEARING - SEE STRUCTURAL FOR MORE DETAIL
3 5/8" STEEL STUD FRAMING
5/8" GYPSUM BOARD BOTH SIDES
CLASS "A" PVC PANEL BOTH SIDES
PARTITION HEAD SUPPORTING FLOOR STRUCTURE ABOVE
- P5** 3 5/8" STEEL STUD FRAMING
5/8" GYPSUM BOARD BOTH SIDES
PARTITION HEAD UP TO CEILING STRUCTURE
- P6** 1-HOUR FIRE RESISTANCE RATED ASSEMBLY
3 5/8" STEEL STUD FRAMING
5/8" GYPSUM BOARD ONE SIDE
PARTITION HEAD UP TO CEILING STRUCTURE

PARTITIONS/WALLS KEY
 --- 1-HOUR PARTITION

- P7** 6" STEEL STUD FRAMING
5/8" GYPSUM BOARD ONE SIDE
CLASS "A" PVC PANEL ONE SIDE
PARTITION HEAD UP TO ROOF OR FLOOR STRUCTURE ABOVE
- P8** 3 5/8" STEEL STUD FRAMING
5/8" GYPSUM BOARD ONE SIDE
CLASS "A" PVC PANEL ONE SIDE
PARTITION HEAD UP TO ROOF OR FLOOR STRUCTURE ABOVE
- P9** LOAD BEARING - SEE STRUCTURAL FOR MORE DETAIL
3 5/8" STEEL STUD FRAMING
5/8" GYPSUM BOARD BOTH SIDES
CLASS "A" PVC PANEL BOTH SIDES
PARTITION HEAD SUPPORTING FLOOR STRUCTURE ABOVE
- W1** FURRED WALL ASSEMBLY AGAINST EXTERIOR WALL
LOAD BEARING - SEE STRUCTURAL FOR MORE DETAIL
3 5/8" STEEL STUD FRAMING
5/8" GYPSUM BOARD ONE SIDE
CLASS "A" PVC PANEL SAME SIDE AS DRYWALL
PARTITION HEAD SUPPORTING FLOOR STRUCTURE ABOVE
- W2** FURRED WALL ASSEMBLY AGAINST EXTERIOR WALL
1 1/2" DEEP STEEL HAT CHANNEL RUN VERTICALLY AT 24" O.C.
CLASS "A" PVC PANEL ONE SIDE
- W3** FURRED WALL ASSEMBLY AGAINST EXTERIOR WALL
1 1/2" DEEP STEEL HAT CHANNEL RUN VERTICALLY AT 24" O.C.
5/8" GYPSUM BOARD ONE SIDE



2 SECOND FLOOR PLAN
 SCALE: 1/8" = 1'-0"
 2' 4' 8' 16'

GENERAL NOTES

1. DRAWINGS ARE FOR TENANT FIT-UP ONLY.
2. DIMENSIONS SHOWN ARE TO BUILDING LINES, COLUMN CENTERLINES, OPENING CENTERLINES, AND PARTITION FINISH FACES, OR AS OTHERWISE NOTED.

DOOR NOTES

1. SEE DOOR SCHEDULE ON SHEET A3.

PLUMBING SYSTEMS NOTES

1. PROVIDE PLUMBING FIXTURES AS SHOWN, COMPLETE WITH HOT AND COLD WATER SUPPLY AND WASTE PIPING.
2. SUBMIT DESIGN PLANS AND SPECIFICATIONS TO THE OWNER FOR REVIEW.

MECHANICAL SYSTEMS NOTES

1. PROVIDE HVAC UNITS, DUCTING, SUPPLY AND RETURN REGISTERS AS NECESSARY FOR NEW SPACE.
2. SUBMIT DESIGN PLANS AND SPECIFICATIONS TO THE OWNER FOR REVIEW.

ELECTRICAL SYSTEM NOTES

1. PROVIDE LIGHTING AND POWER SYSTEMS AND DATA CABLING, PER TENANT REQUIREMENTS.

FIRE PROTECTION SYSTEMS NOTES

1. PROVIDE EMERGENCY LIGHTING AND EXIT SIGNS.
2. PROVIDE ONE 5 LB A,B,C FIRE EXTINGUISHER AT EVERY EXIT.

