

Key Plan

Sheet Issue / Revision

No.	Date	Description
1	03/28/2017	Owner Review Set
2	04/17/2017	Permit Set

Seal/Signature



Project
UNIT 15
1039 RIVERSIDE STREET
PORTLAND, MAINE

Client
HardyPond
Construction
Portland, Maine

Title
TYPICAL
FOUNDATION
DETAILS

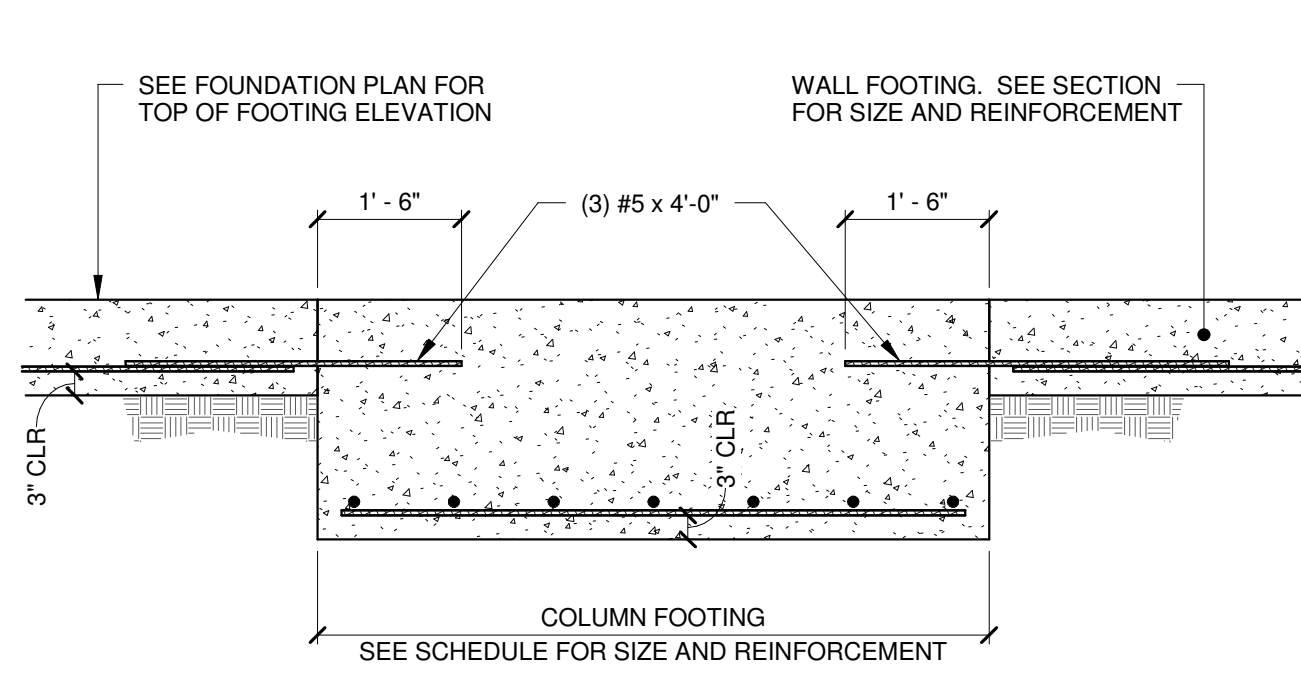
Project Number 17042-0

Drawn By MB

Checked By MB

S-300

Scale As indicated



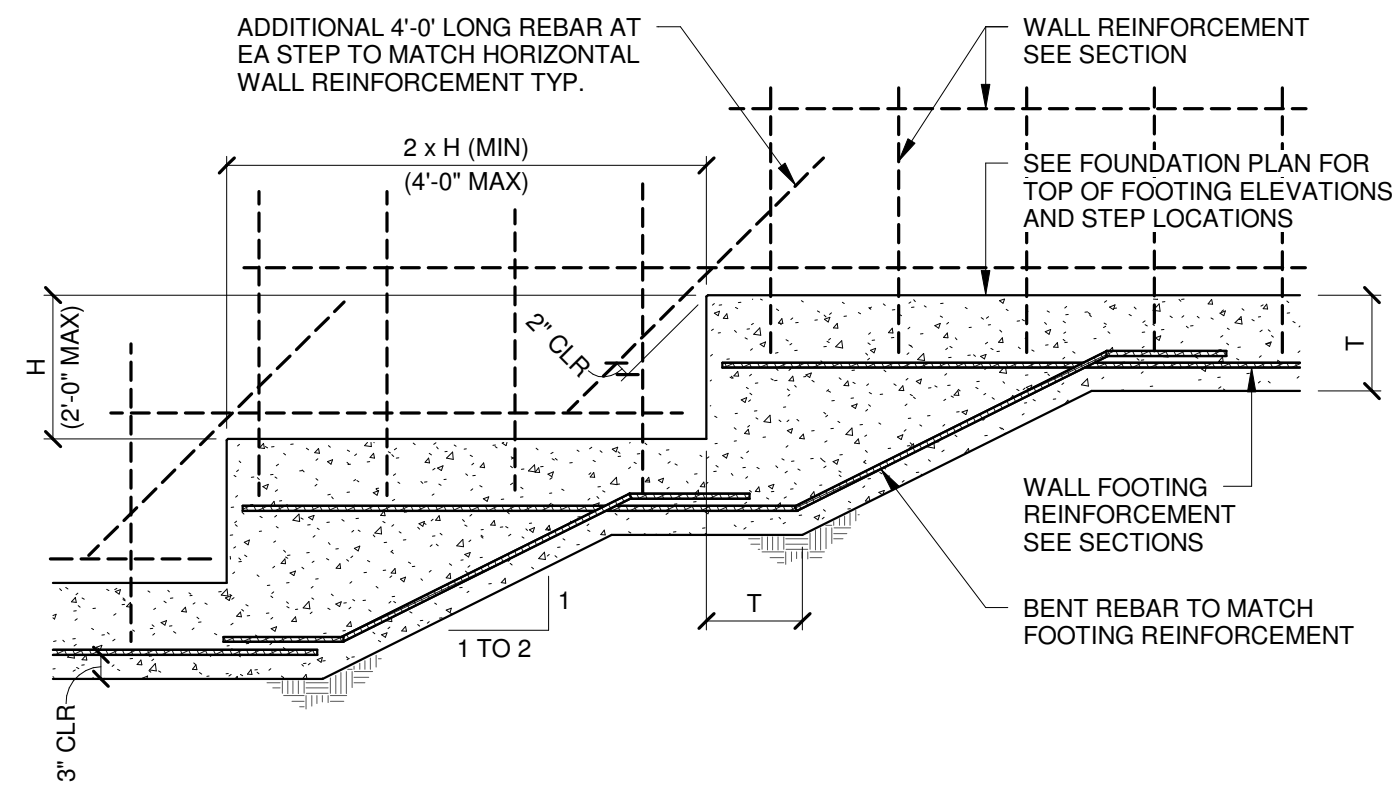
COLUMN & WALL FOOTINGS PLACED SEPARATELY

NOTES:

1. VERTICAL WALL REINFORCING OR DOWELS, NOT SHOWN FOR CLARITY, SHALL BE LENGTHENED AS REQUIRED TO ALLOW END HOOKS TO BE TIED TO BOTTOM REINFORCING MAT OF COLUMN FOOTING.

1 TYPICAL COLUMN / WALL FOOTING INTERSECTION

1/2" = 1'-0"

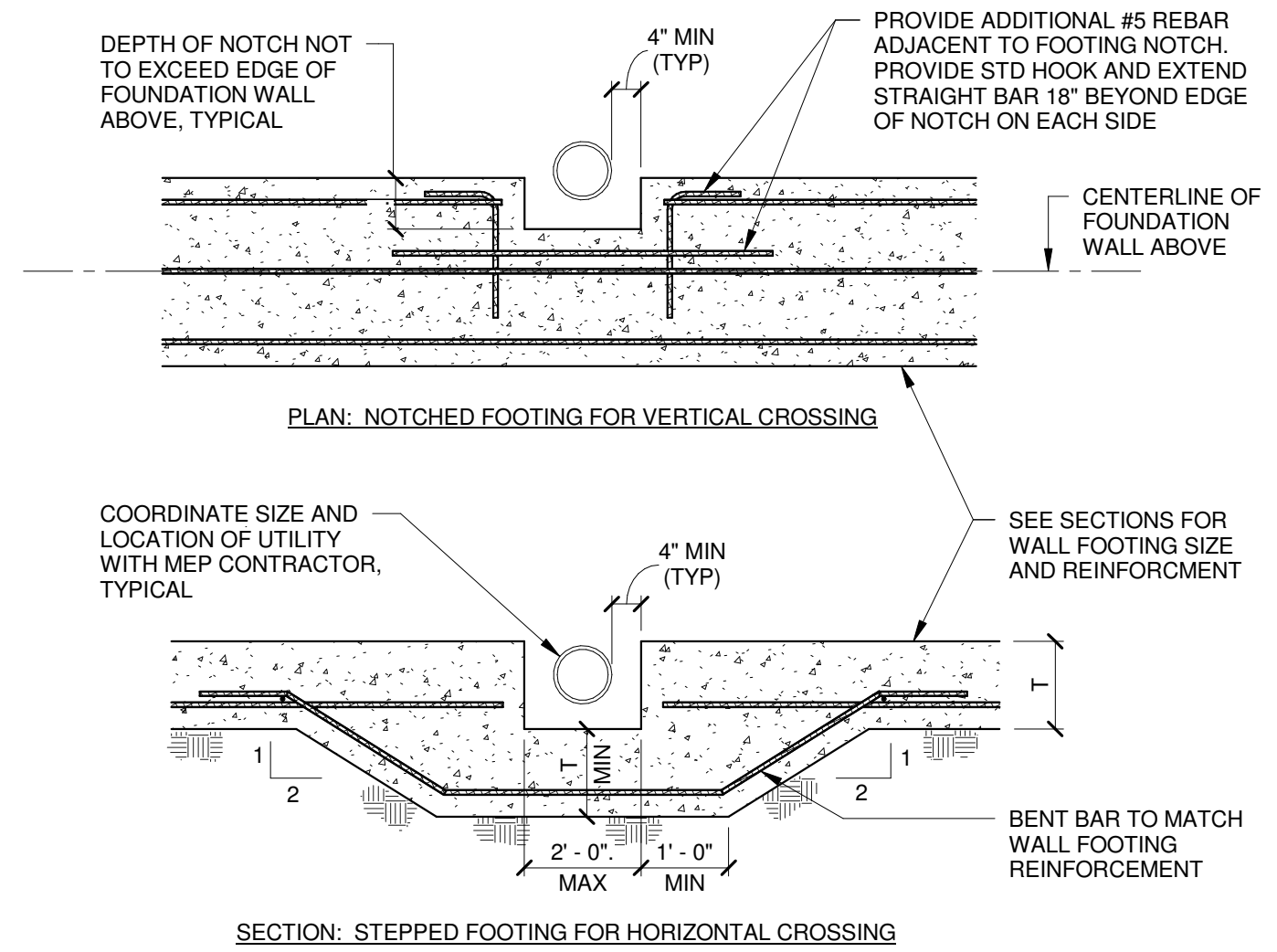


NOTES:

1. STEP FOOTING AS REQUIRED TO MAINTAIN PROPER FROST COVERAGE. REFER TO SITE DRAWINGS FOR GRADE INFORMATION.

2 TYPICAL WALL FOOTING STEP DETAIL

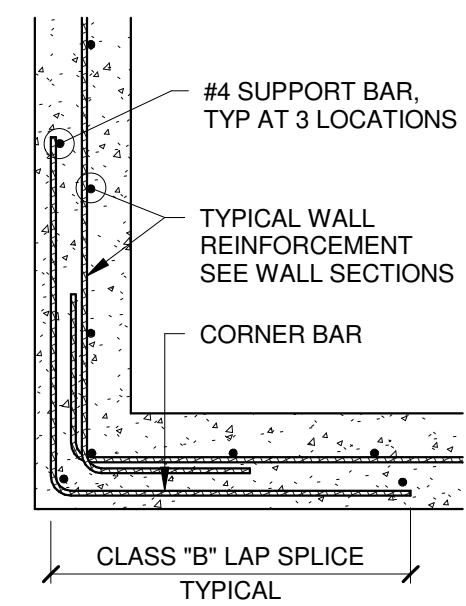
1/2" = 1'-0"



SECTION: STEPPED FOOTING FOR HORIZONTAL CROSSING

3 TYPICAL FOOTING DETAIL AT PENETRATION

1/2" = 1'-0"



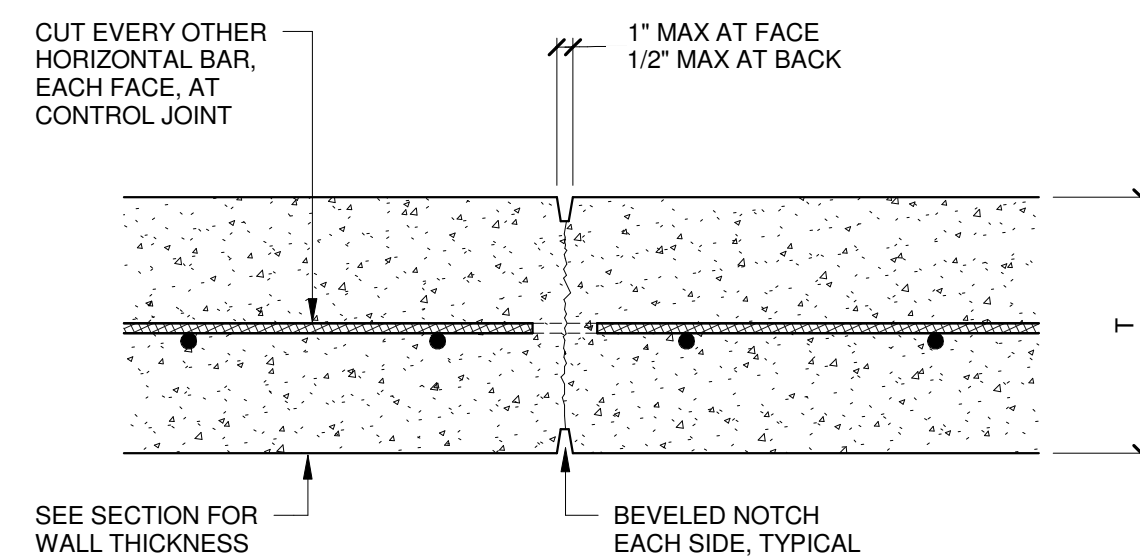
WALL REINFORCEMENT
(CENTERED)

NOTES:

1. CORNER BAR TO MATCH HORIZONTAL WALL REINFORCEMENT IN BAR SIZE AND SPACING.
2. SEE APPLICABLE SECTIONS FOR REINFORCING STEEL CLEARANCES.
3. TERMINATE HORIZONTAL WALL REINFORCEMENT 2" CLEAR FROM END OF WALL.

4 TYPICAL CORNER REINFORCEMENT FOR WALLS

1/2" = 1'-0"



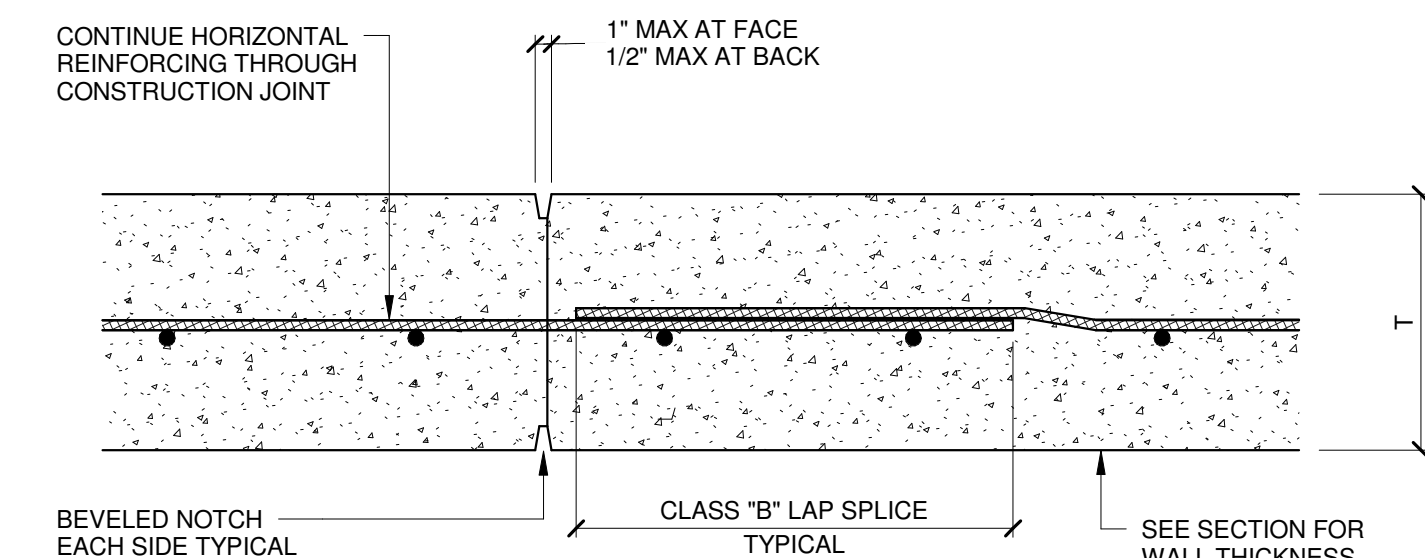
PLAN VIEW

NOTES:

1. CONTRACTION JOINTS TO BE SPACED AT A MAXIMUM OF 30 FT ALONG A CONTINUOUS STRAIGHT WALL AND 20 FT FROM CORNERS.

5 TYPICAL VERTICAL WALL CONTRACTION JOINT

1" = 1'-0"



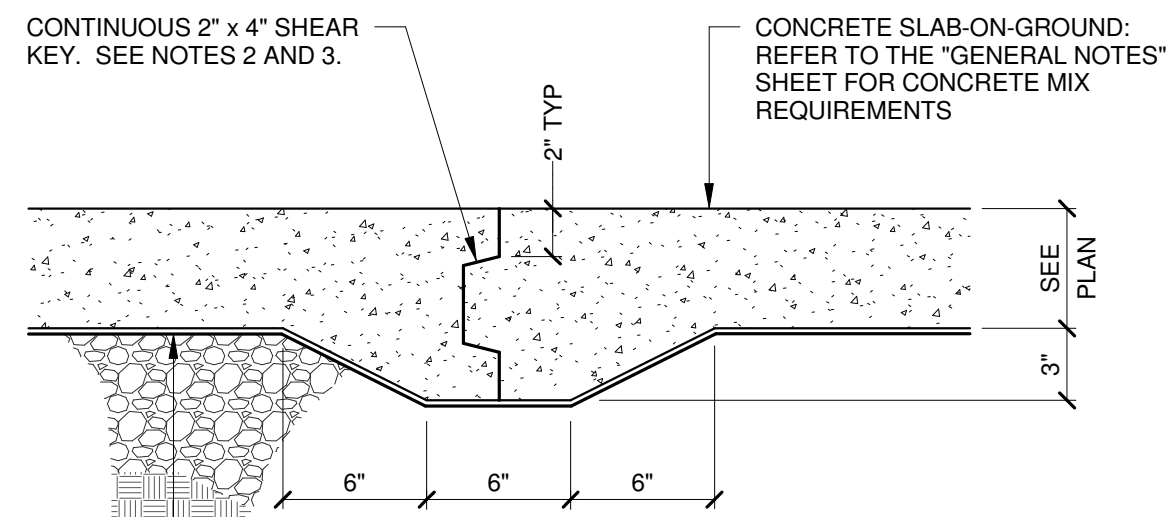
PLAN VIEW

NOTES:

1. CONSTRUCTION JOINTS SHALL BE LOCATED AT CONTRACTION JOINT LOCATIONS. REFER TO TYPICAL CONTRACTION JOINT DETAILS FOR JOINT SPACING LIMITS.

6 TYPICAL VERTICAL WALL CONSTRUCTION JOINT

1" = 1'-0"

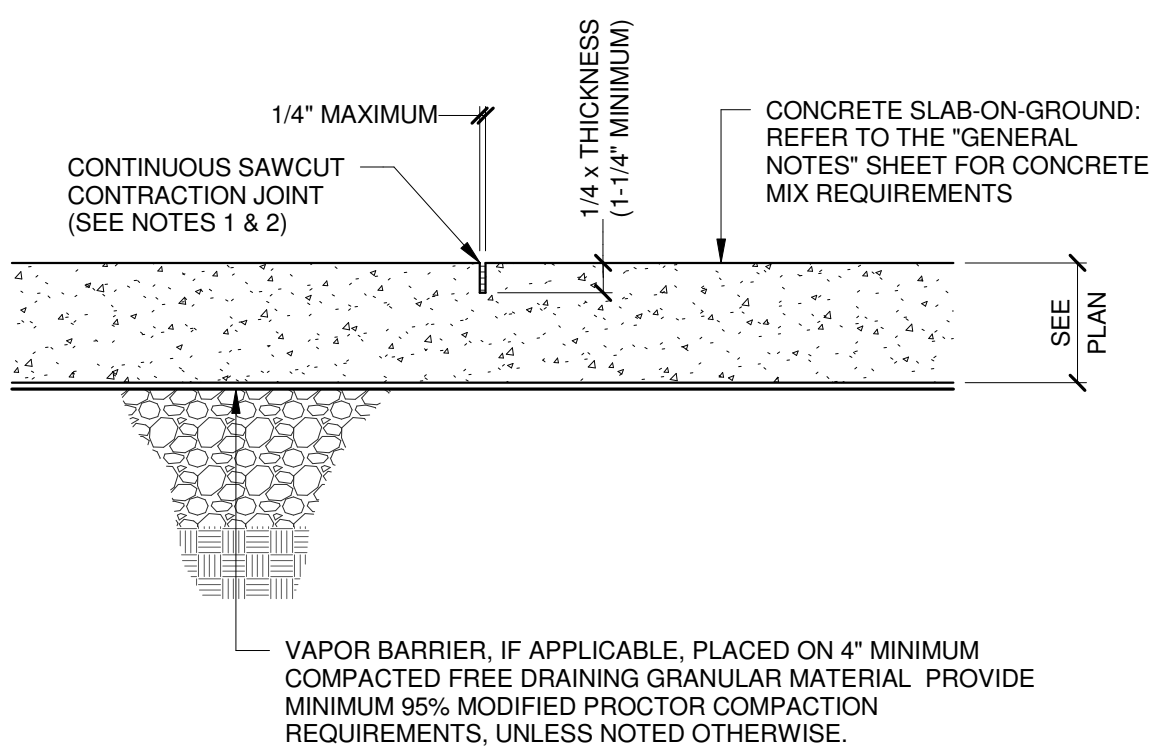


NOTES:

1. COORDINATE WITH ARCHITECT THE TYPE AND THICKNESS OF VAPOR BARRIER, IF APPLICABLE.
2. CONTRACTOR SHALL COORDINATE CONSTRUCTION JOINT LOCATION SUCH THAT THEY COINCIDE WITH CONTRACTION JOINT LOCATIONS SHOWN ON PLAN.
3. APPLY LIQUID BONDBREAKER TO FULL DEPTH OF CONSTRUCTION JOINT.

7 TYPICAL CONSTRUCTION JOINT

1 1/2" = 1'-0"



NOTES:

1. SAWCUT JOINT AS SOON AS THE CONCRETE HARDENS. THE CONCRETE IS HARD ENOUGH WHEN THE SAW BLADE DOES NOT DISLodge ANY AGGREGATE AND WHEN THE CUT EDGES DO NOT RAVEL. SAWCUTTING OPERATION IS TO BE COMPLETE BEFORE ANY SHRINKAGE CRACKING CAN TAKE EFFECT.
2. PREPARE AND SEAL JOINT, AS REQUIRED. COORDINATE WITH ARCHITECT THE TYPE AND THICKNESS OF VAPOR BARRIER, IF APPLICABLE.

8 TYPICAL CONTRACTION JOINT DETAIL

1 1/2" = 1'-0"