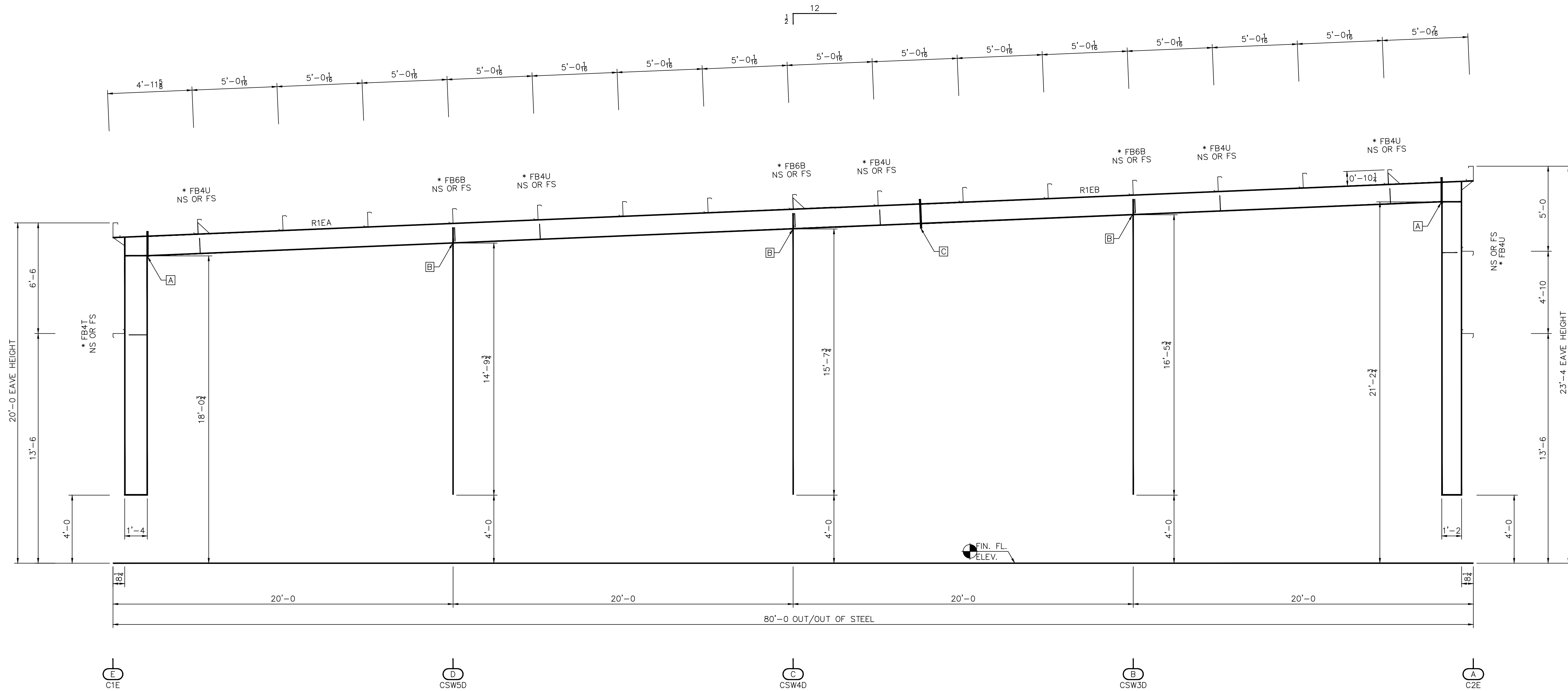


APPROXIMATE MEMBER WEIGHTS	
PART MARK	WEIGHT
R1EA	727
R1EB	495
CSW5D	248
CSW4D	260
CSW3D	299
C2E	303
C1E	270

GENERAL NOTES
 FRAME CLEARANCES SHOWN ARE APPROXIMATE AND
 MAY VARY DUE TO CONDITIONS (DEFLECTION).
 VERTICAL CLEARANCE DIMENSIONS ARE FROM
 FINISHED FLOOR REFERENCE ELEVATION.

* DENOTES: PLATE AT FLANGE BRACE
 CL190 AT 8" PURLINS/GIRTS
 CL191 AT 10" PURLINS/GIRTS
 CL192 AT 12" PURLINS/GIRTS



CROSS SECTION AT FRAME LINE "5"

Ch'd	Description	Date	Revision
By			

8600 SOUTH I-35 SERVICE RD.
 OKLAHOMA CITY, OK 73149
STAR BUILDING SYSTEMS
 AN INTEL COMPANY (405) 636-2010

Customer: HARDY POND CONSTRUCTION
 1039 RIVERSIDE LLC
 PORTLAND, ME

Project Name & Location:
 1039 RIVERSIDE LLC
 PORTLAND, ME

Drawing Status:
 Preliminary (Not For Construction)
 For Approval (Not For Construction)
 For Construction Permit
 For Erector Installation

Scale: NOT TO SCALE
 Drawn by: TJK 3/6/17
 Checked by: TJK 3/6/17
 Project Engineer: JMB
 Job Number: 15-B-70493
 Sheet Number: E11 of 11

The engineer whose seal appears hereon is an employee for the manufacturer for the materials described herein. Said seal or certification is limited to the products designed and manufactured by manufacturer only. The undersigned engineer is not the overall engineer of record for this project.

Phillip J. Johnson, P.E.
 Maine P.E. 11018
 DRST1E ENS12A

SPlice Bolt Table				
CONN.	QTY.	SIZE	TYPE	HARDENED WASHERS / BEVELED WASHERS
A	(6)	3/4" X 1 1/2"	A325 B&N	0 / 0
B	(4)	1/2" X 1 1/2"	A325 B&N	1 / 0
C	(8)	3/4" X 1 1/2"	A325 B&N	0 / 0

Mar 06, 2017

