

AREA #3
"WET SYSTEM #1"
HYDRAULICALLY MOST REMOTE AREA
(2 GPM SQ. FT. / 1540 SQ. FT.)
(ELEV. @ HIGHEST HEAD=20'-8")

AREA #5
"WET SYSTEM #2"
(FINAL WALK IN)
HYDRAULICALLY MOST REMOTE AREA
(3 GPM SQ. FT. / 440 SQ. FT.)
(ELEV. @ HIGHEST HEAD=131'-08")

LOSURE MATERIALS TO MEET OF ASME A17.1 SECTION REQUIRED IN TOP OF SHAFT

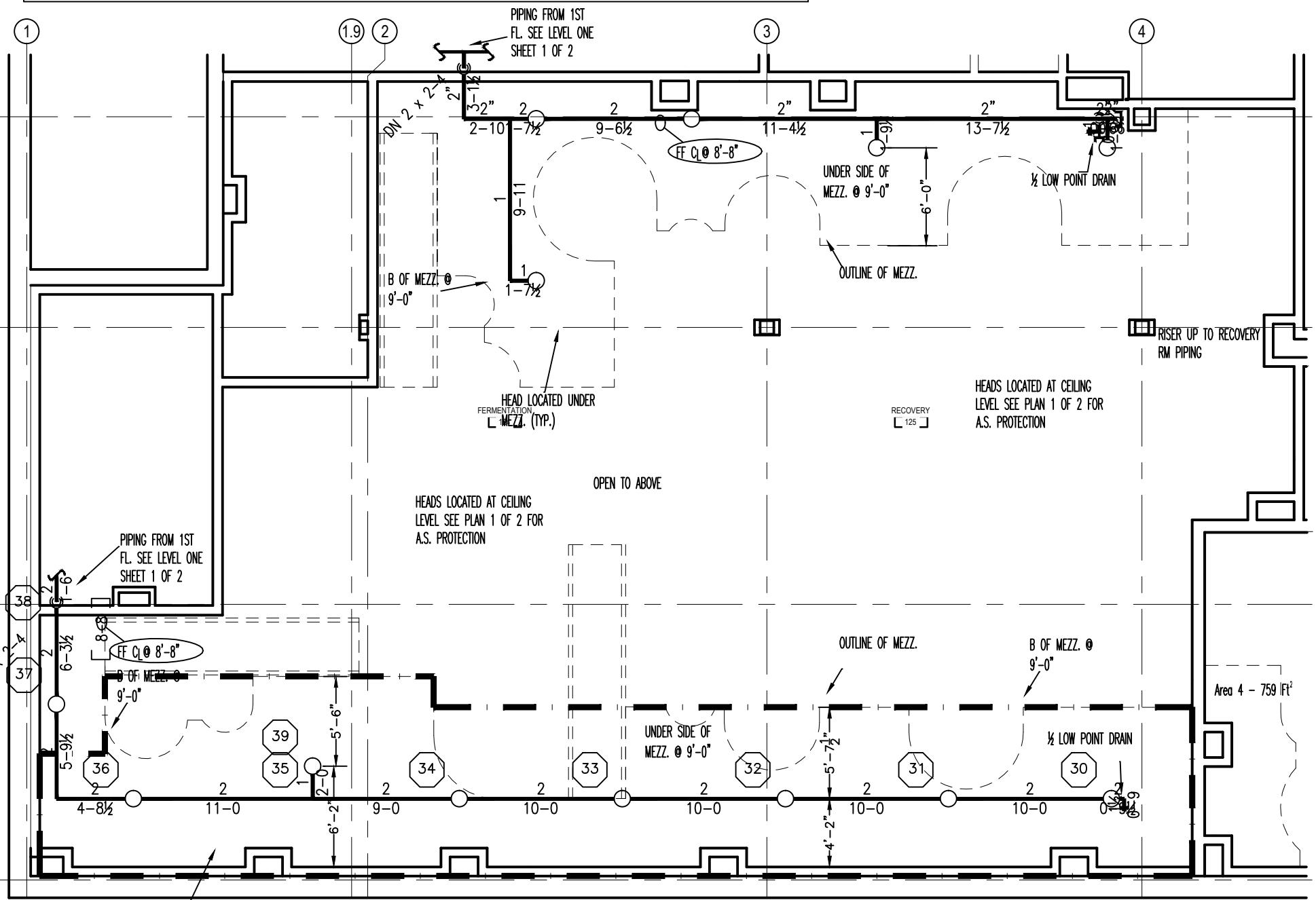
AREA #1
"WET SYSTEM #2"
(INTERSTITIAL SPACE)
PROOF CALC
(15 GPM SQ. FT. / 1545 SQ. FT.)
(ELEV. @ HIGHEST HEAD=130'-10")

AREA #6
"AFF FOAM-WATER SYSTEM"
(XP PURIFICATION)
HYDRAULICALLY MOST REMOTE AREA
(3 GPM SQ. FT. / 567 SQ. FT.)
(ELEV. @ HIGHEST HEAD=115'-0")

FIRE SPRINKLER PLAN - LEVEL ONE
SCALE: 1/8"=1'
AREA PROTECTED: 12,080 SQ.FT.
FINISH FLOOR ELEVATION : 100.0'
COLOR CODE: WHITE

Symbol	Count	Thread	K-Factor	Description	Note
○	10	1/2"	5.6	RELIABLE F156 STANDARD RESPONSE BRASS UPRIGHT 200' SIN# RA1325	On Line
⊗	9	3/4"	8.0	TYCO TY-B STANDARD RESPONSE SEMI-RECESSED WHITE POLYESTER CORROSION RESISTANT PENDENT 286' SIN# TY4251	on Drop
●	82	1/2"	5.6	RELIABLE C5-56 STANDARD RESPONSE BRASS CONCEALED PENDENT 212' SIN# RA3415 W/ MODEL C4 SR GASKET WHITE COVER PLATE	on Drop
●	14	1/2"	5.6	RELIABLE F156 STANDARD RESPONSE BRASS UPRIGHT 200' SIN# RA1325	on Sprig
●	4	1/2"	5.6	RELIABLE F156 STANDARD RESPONSE WHITE POLYESTER CORROSION RESISTANT PENDENT 200' SIN# RA1314	on Drop

115 = Total Number of Heads This Floor

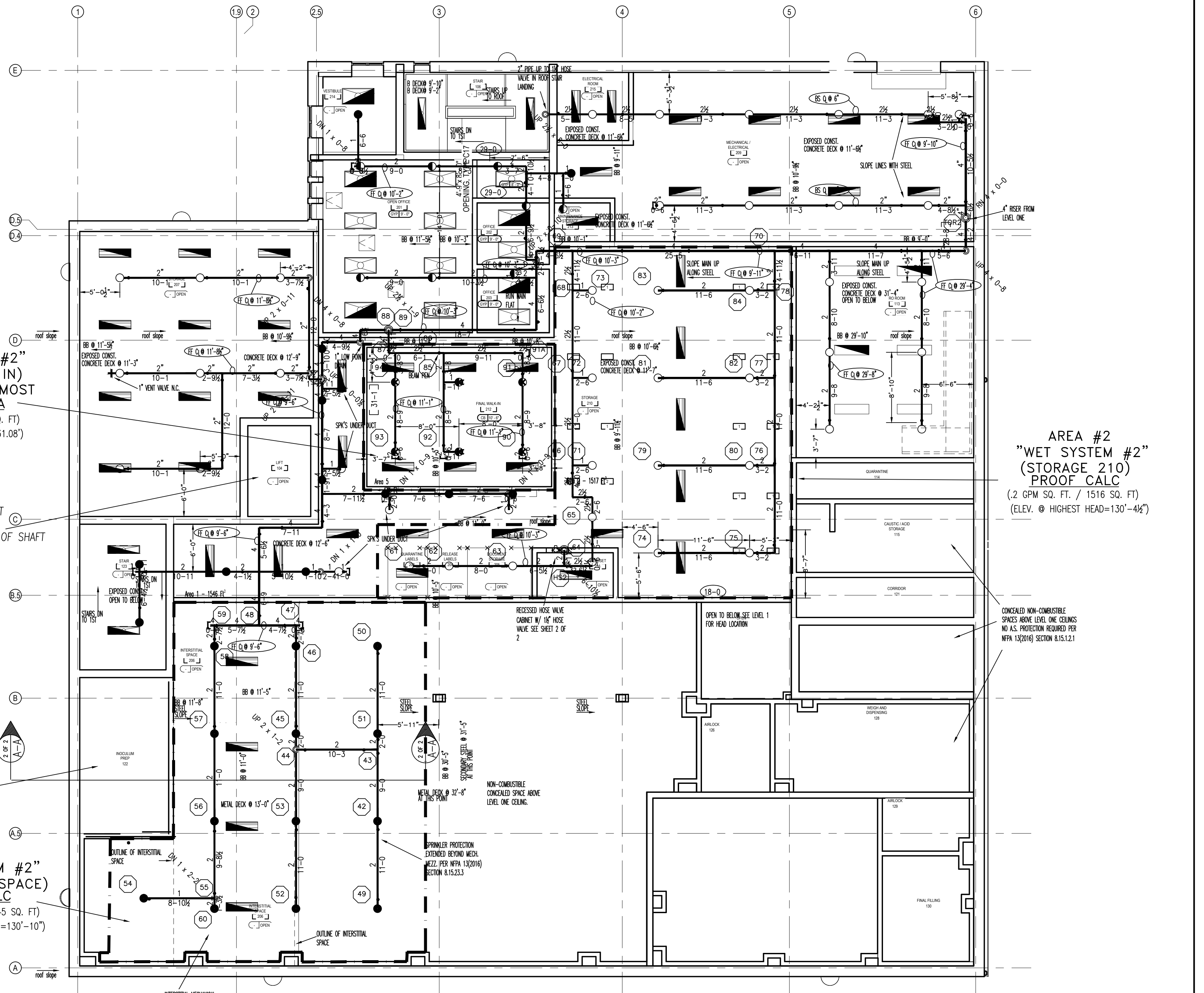


AREA #4
"WET SYSTEM #1"
(RECOVERY 125)
PROOF CALC
(2 GPM SQ. FT. / (7) HEADS)
(ELEV. @ HIGHEST HEAD=108'-8")
REMOTE AREA PER NFPA 13(2016)
SECTION 11.2.3.4.2

FIRE SPRINKLER PLAN - MEZZANINE
SCALE: 1/8"=1'
AREA PROTECTED: 1,095 SQ.FT.
FINISH FLOOR ELEVATION : 100.0'
COLOR CODE: WHITE

Symbol	Count	Thread	K-Factor	Description	Note
○	13	1/2"	5.6	RELIABLE F156 STANDARD RESPONSE BRASS UPRIGHT 200' SIN# RA1325	On Line

13 = Total Number of Heads This Floor



AREA #2
"WET SYSTEM #2"
(STORAGE 210)
PROOF CALC
(2 GPM SQ. FT. / 1516 SQ. FT.)
(ELEV. @ HIGHEST HEAD=130'-46")

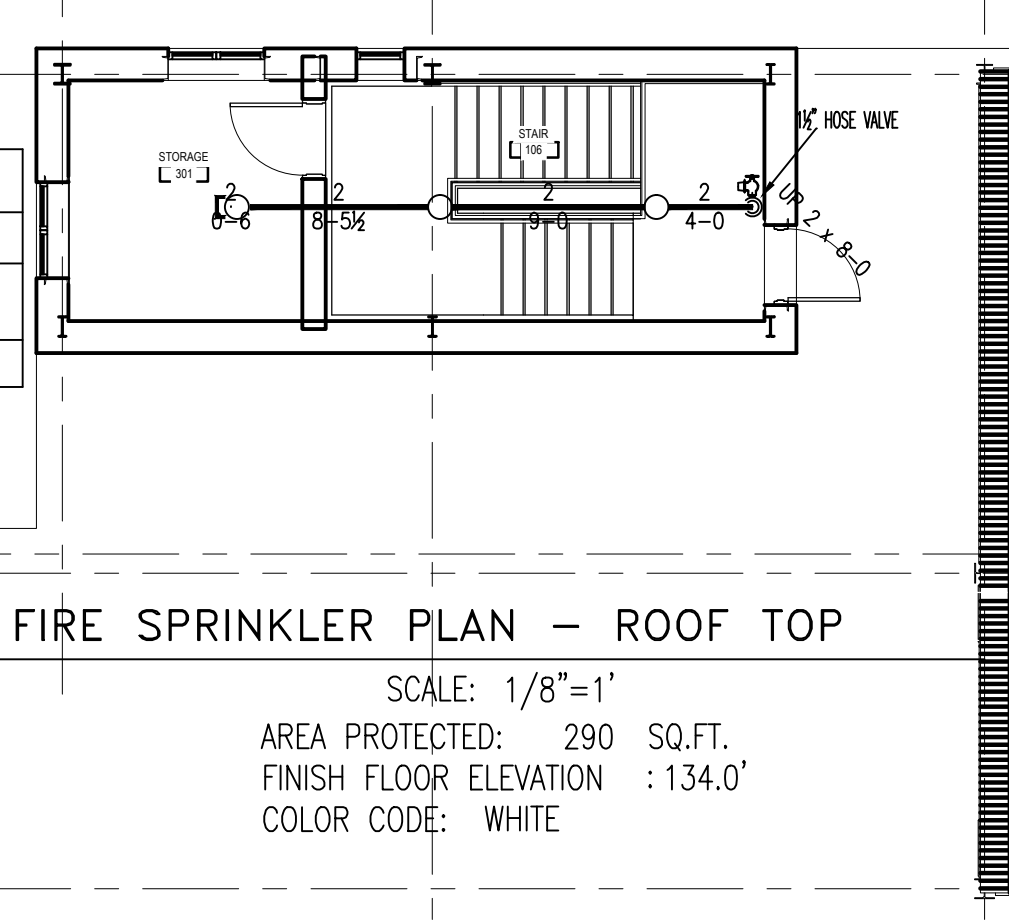
FIRE SPRINKLER PLAN - LEVEL TWO
SCALE: 1/8"=1'
AREA PROTECTED: 8,320 SQ.FT.
FINISH FLOOR ELEVATION : 120.0'
COLOR CODE: WHITE

Symbol	Count	Thread	K-Factor	Description	Note
○	45	1/2"	5.6	RELIABLE F156 STANDARD RESPONSE BRASS UPRIGHT 200' SIN# RA1325	on Line
●	8	1/2"	5.6	RELIABLE C5-56 STANDARD RESPONSE BRASS CONCEALED PENDENT 212' SIN# RA3415 W/ MODEL C4 SR GASKET WHITE COVER PLATE	on Drop
●	6	1"	8.0	RELIABLE F3-80 CHROME DRY RECESSED PENDENT 200' SIN# RA6012	on Drop
●	25	1/2"	5.6	RELIABLE F156 STANDARD RESPONSE BRASS UPRIGHT 200' SIN# RA1325	on Sprig

84 = Total Number of Heads This Floor

Symbol	Count	Thread	K-Factor	Description	Note
○	3	1/2"	5.6	RELIABLE F156 STANDARD RESPONSE BRASS UPRIGHT 200' SIN# RA1325	on Line

3 = Total Number of Heads This Floor



FIRE SPRINKLER PLAN - ROOF TOP
SCALE: 1/8"=1'
AREA PROTECTED: 290 SQ.FT.
FINISH FLOOR ELEVATION : 134.0'
COLOR CODE: WHITE

GENERAL NOTES

INSTALL A NEW WET SPRINKLER SYSTEM IN THE IMMUCELL BUILDING IN COMPLIANCE WITH NFPA 13 (2016) & NFPA 11, 16, 30, STATE & LOCAL CODES. PENDENT SPRINKLER HEADS TO BE INSTALLED IN A SYMMETRICAL PATTERN IN COMPLIANCE WITH NFPA SPACING REQUIREMENTS. ALL CEILING TO BE NON-COMBUSTIBLE OR LIMITED-COMBUSTIBLE WITH A UL LISTED FLAME SPREAD RATING OR LESS THAN 25. ALL DIMENSIONS ARE SHOWN FOR GENERAL LOCATION OF SPRINKLER HEADS, PIPING MAY VARY TO SUIT ACTUAL FIELD CONDITIONS. STORAGE SHALL NOT EXCEED 18" BELOW SPRINKLER HEAD DEFLECTOR. ALL ELECTRICAL WIRING AND FIRE ALARM INSTALLATION DONE BY OTHERS. ALL PAINTING DONE BY OTHERS.

○ = INDICATES HYDRAULIC REFERENCE POINTS.
F.F. ⊕ INDICATES FINISH FLOOR UP TO CENTERLINE OF PIPE.
D ⊕ INDICATES DECK DOWN TO CENTERLINE OF PIPE.

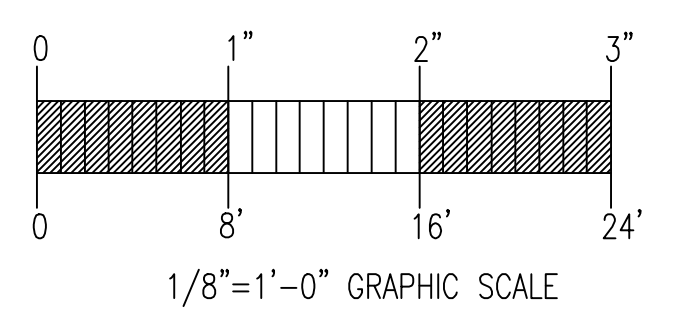
OCCUPANCY DESCRIPTION AND CLASSIFICATION:

PER WATER BASED FIRE SUPPRESSION SPEC 211000 / SECTION 1.5 / B / 2 APPLICABLE STANDARD NFPA 13 (2016) ED. & NFPA 30

- OFFICE AREA ; LIGHT HAZARD
- MECHANICAL EQUIPMENT ROOMS ; ORDINARY HAZARD, GROUP 2
- ELECTRICAL EQUIPMENT ROOMS ; ORDINARY HAZARD, GROUP 2
- MANUFACTURING AREAS ; ORDINARY HAZARD, GROUP 2
- STORAGE ROOMS 207 & 210 ; ORDINARY HAZARD, GROUP 2
- FINAL WALK IN ; EXTRA HAZARD, GROUP 1
- SOLVENT STORAGE & WEIGHT DISPENSING ; SPECIAL HAZARD AFF (DESIGNED TO NFPA 30)

INDICATES WET SPRINKLER SYSTEM PIPING :
INDICATES AFF FOAM-WATER SYSTEM PIPING : -----

N.O. = NORMALLY OPEN
N.C. = NORMALLY CLOSED



GENERAL NOTES	DATE	REVISIONS	REQUIRED APPROVALS	OWNER / ARCHITECT	FIRE SPRINKLER PLANS & DETAILS
SPRINKLER SYSTEM INSTALLATION TO COMPLY WITH NFPA 13 (2016), NFPA 11 (2016), NFPA 16 (2016)	3/6/17	SUBMITTAL PLANS	OWNER / ARCHITECT STATE FIRE MARSHAL PORTLAND FIRE DEPT. STANTEC ENGINEERING	IMMUCELL MAST BUILD-OUT PROJECT LOT #11 CADDIE ST. PORTLAND, MAINE	DWG. NO. 1 OF 2
WET SYSTEM BRANCH LINE PIPING TO BE BLACK SCH 40 (1"-1 1/2") JOINED BY THREADED DUCTILE IRON FITTINGS			DRAWN BY RJP NICET LEVEL II CERT# 140148	CONTRACT WITH: CONSIGLI CONST.	JOB NUMBER AU-5568-16
WET SYSTEM MAIN PIPING (2"-6") TO BE SCH. 10 BLACK WITH GROOVED ENDS & WELDED OUTLETS JOINED BY MECHANICAL COUPLINGS			CHECKED BY WAF NICET LEVEL III CERT# 095574	EASTERN FIRE PROTECTION AUBURN/LEWISTON INDUSTRIAL AIRPARK, AUBURN, MAINE 04210	SCALE AS NOTED
OWNER TO PROVIDE SUFFICIENT HEAT THROUGHOUT BUILDING TO PREVENT FREEZING OF WATER FILLED SPRINKLER PIPING AND EQUIPMENT.			CONTRACTOR LICENSE # 101 CONTRACTOR RMS # 368		DATE 03/02/17