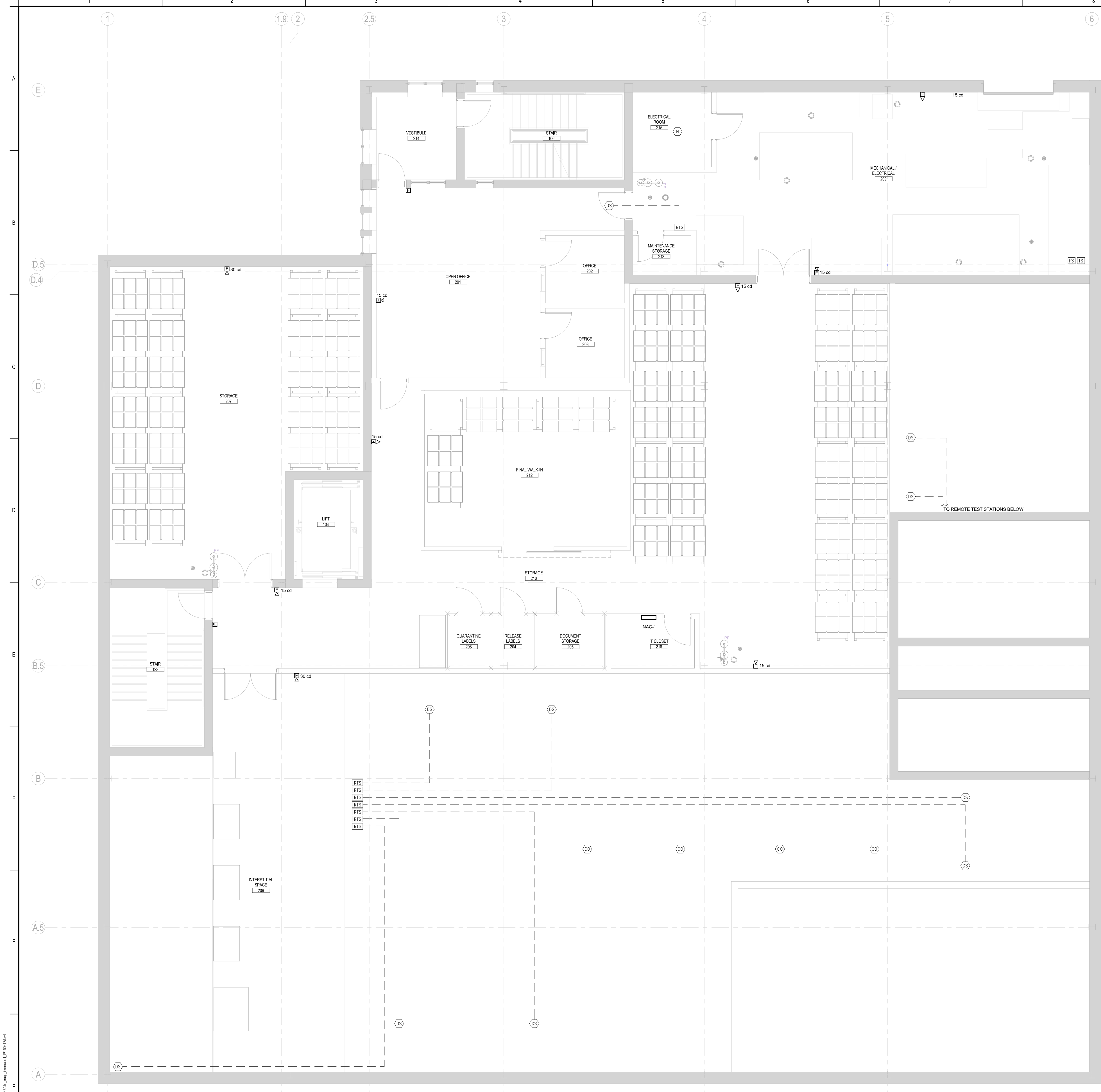
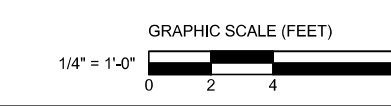


GENERAL NOTES

- PERFORM ALL WORK IN ACCORDANCE WITH THE NATIONAL ELECTRICAL CODE, NFPA 72 AND AUTHORITY HAVING JURISDICTION.
- REFER TO DRAWING E-402-C FOR FIRE ALARM SYMBOLS, NOTES, RISER DIAGRAM AND ADDITIONAL INFORMATION.
- ELECTRICAL CONTRACTOR TO FINISH AND WIRE DUCT MOUNTED SMOKE DETECTORS. MECHANICAL CONTRACTOR TO INSTALL PER MANUFACTURER'S RECOMMENDATIONS. COORDINATE EXACT LOCATION WITH MECHANICAL DRAWINGS AND CONTRACTOR, (TYPICAL).



1 SECOND FLOOR - FIRE ALARM PLAN
1/4" = 1'-0"



Revision	By	App'd	DATE
0			08/19/2016
PACKAGE C - INTERIOR FIT-OUT			
PACKAGE B - SUPERSTRUCTURE & SHELL			
PACKAGE A - FOUNDATIONS & BELOW SLAB			
Issued			08.05.2016
			07.22.2016
			08.19.2014



Client/Project
IMMUCELL
Lot 11 - Second Tee Business Park
1039 Riverside Street
Portland, Maine 04103

Title
SECOND FLOOR - FIRE ALARM PLAN

Project No.
191504176
Scale
1/4" = 1'-0"

Revision
0
Drawing No.
E-402-C

PRINTED AND PLOTTED BY: STANTEC CONSULTING SERVICES INC. DATE: 08/19/2016 TIME: 10:42:57 PM