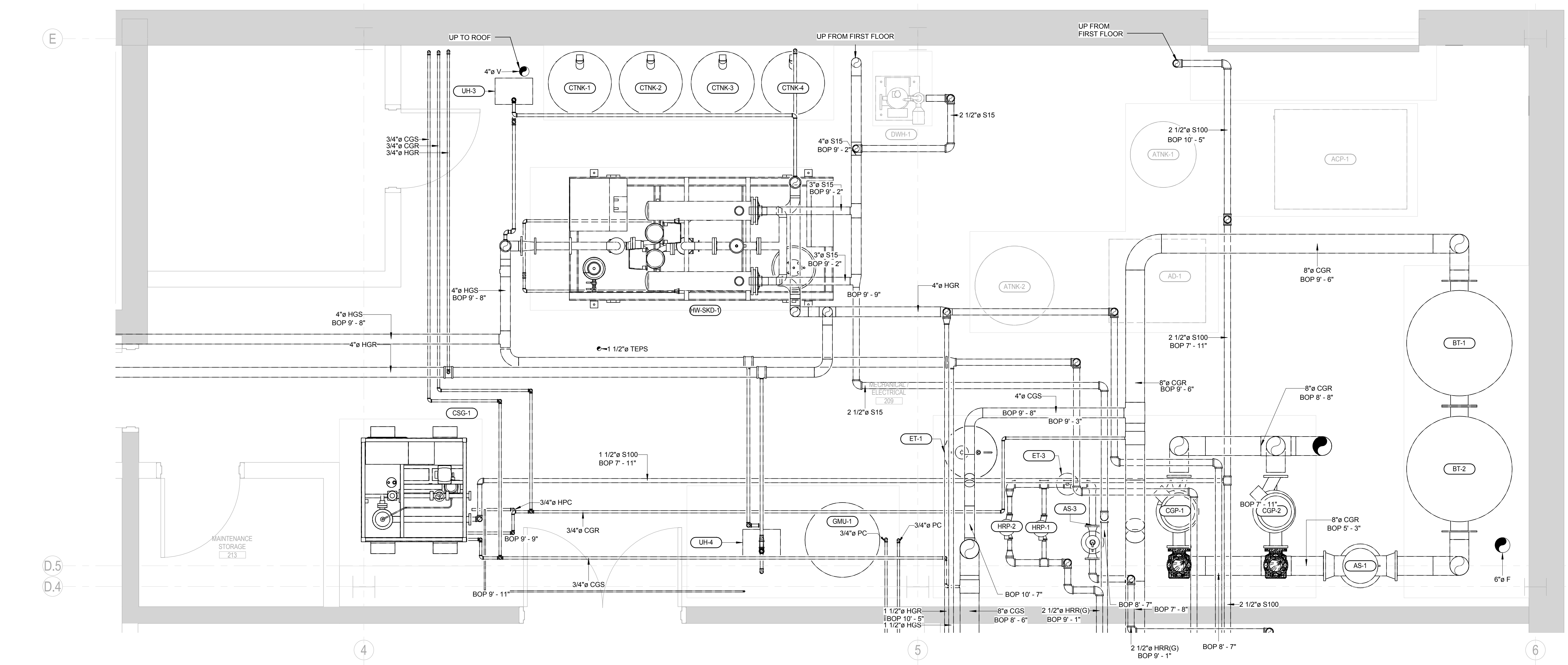


GENERAL NOTES

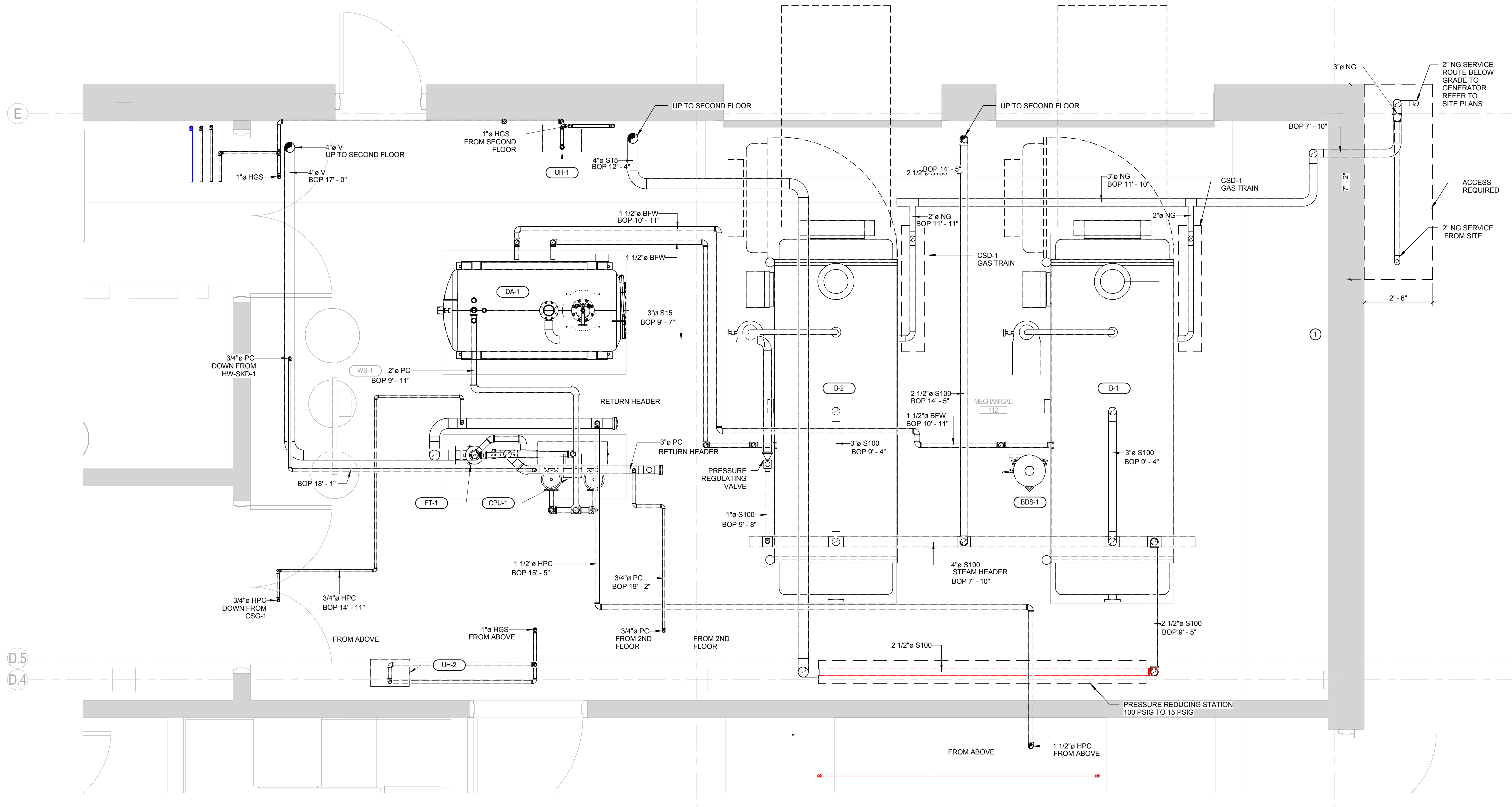
- GENERAL PIPE ROUTING IS REPRESENTED ON THE DRAWINGS. FINAL ROUTING, ISOMETRICS AND FIELD FIT-UP BY PIPING CONTRACTOR.
- CONTRACTOR TO FIELD COORDINATE ALL ARCHITECTURAL, STRUCTURAL AND MECHANICAL COMPONENTS. RE-ROUTING OF SERVICES CONTRARY TO DESIGN DOCUMENTS MAY OCCUR AND SHALL BE COORDINATED AND OWNER APPROVED DURING CONSTRUCTION.
- MISCELLANEOUS STRUCTURAL STEEL FOR PIPING SUPPORT SHALL BE CONTRACTOR FURNISHED AND INSTALLED.
- FOR DETAILED INFORMATION (SUCH AS VALVES, INSTRUMENTATION, HOSES, SLOPES AND PIPE INSULATION) REFER TO P&IDs AND SPECIFICATIONS.
- UNLESS CLEARLY NOTED ON THE DRAWINGS, CONTRACTOR IS RESPONSIBLE FOR LOCATING INSTRUMENTS AND MANUAL AND AUTOMATED VALVES FOR EASE OF MAINTENANCE AND ACCESSIBILITY.
- FOR MANUAL AND AUTOMATED VALVES AND INSTRUMENTS, REFER TO SPECIFICATIONS AND SCHEDULES.
- CONTRACTOR IS RESPONSIBLE TO INSTALL DRAINS AT ALL LOW POINTS AND VENTS AT HIGH POINTS.
- REFERENCE DOCUMENTS:
- PIPING, MECHANICAL, AND ARCHITECTURAL SPECIFICATIONS
- SCHEMATIC DRAWINGS
- ANY DISCREPANCIES BETWEEN REFERENCE DOCUMENTS AND PIPING SHALL BE NOTED TO THE OWNER AND APPROVED PRIOR TO CONSTRUCTION.
- ROUTING AND PENETRATIONS TO BE COORDINATED WITH OTHER PIPING AND DISCIPLINES.
- CONTRACTORS MUST VERIFY AND FIELD ROUTE CONNECTIONS TO EQUIPMENT COORDINATE WITH SKID MANUFACTURE TO DETERMINE FINAL CONNECTION.
- CALCULATE REQUIREMENTS FOR THERMAL EXPANSION OF PIPING SYSTEMS AND FOR SELECTING AND DESIGNING EXPANSION JOINTS, LOOPS AND SWING CONNECTIONS. INCLUDE ANALYSIS DATA FOR EACH ANCHOR POINT AND ALIGNMENT GUIDE SIGNED AND SEALED BY STATE OF MAINE QUALIFIED PROFESSIONAL ENGINEER. REFER TO SPEC SECTION 230616 FOR FURTHER DETAILS AND REQUIREMENTS.

KEYED NOTES

- PROVIDE CARBON MONOXIDE DETECTOR WHERE INDICATED.

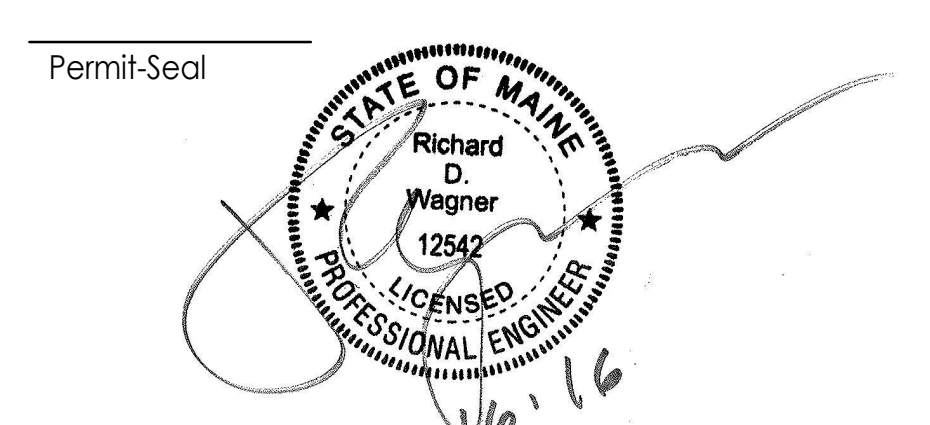


2 SECOND FLOOR - MECHANICAL ROOM ENLARGED PIPING PLAN
MP-700-C 1/2" = 1'-0"



1 FIRST FLOOR - MECHANICAL ROOM ENLARGED PIPING PLAN
MP-700-C 1/2" = 1'-0"

Revision	By	App'd	DD.MM.YYYY
1	ADDENDUM #1		09/16/2016
0	INTERIOR FIT-OUT - ISSUED FOR CONSTRUCTION		08/19/2016
	PACKAGE D - PROCESS		09/16/2016
	PACKAGE C - INTERIOR FIT-OUT		08/19/2016
	PACKAGE B - SUPERSTRUCTURE & SHELL		08/05/2016
	PACKAGE A - FOUNDATIONS & BELOW SLAB		07/22/2016
	Issued		By: App'd: DD.MM.YYYY



Client/Project
IMMUCELL

Lot 11 - Second Tee Business Park
1039 Riverside Street
Portland, Maine 04103

Title
MECHANICAL ROOM ENLARGED PIPING PLAN

Project No. 191504176
Scale: As indicated
Revision 1
Drawing No.



MP-700-C