

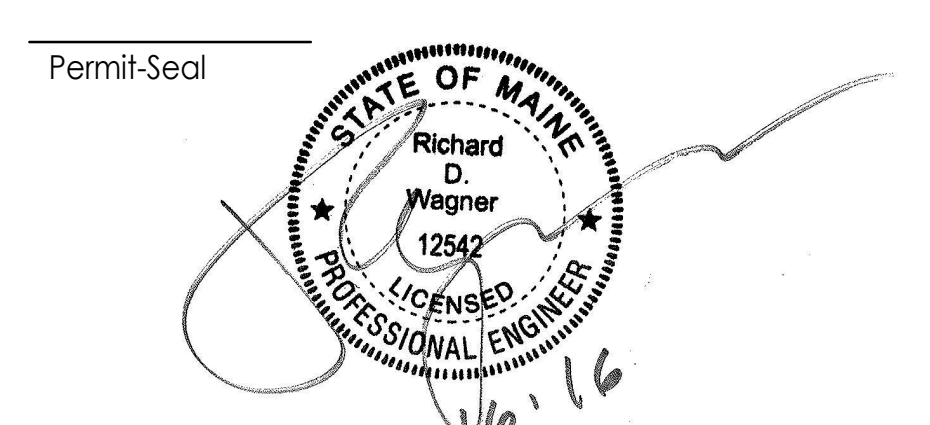
**GENERAL NOTES**

- GENERAL PIPE ROUTING IS REPRESENTED ON THE DRAWINGS. FINAL ROUTING, ISOMETRICS AND FIELD FIT UP BY PIPING CONTRACTOR.
- CONTRACTOR TO FIELD COORDINATE ALL ARCHITECTURAL, STRUCTURAL AND MECHANICAL COMPONENTS. RE-ROUTING OF SERVICES CONTRARY TO DESIGN DOCUMENTS MAY OCCUR AND SHALL BE COORDINATED AND OWNER APPROVED DURING CONSTRUCTION.
- MISCELLANEOUS STRUCTURAL STEEL FOR PIPING SUPPORT SHALL BE CONTRACTOR FURNISHED AND INSTALLED.
- FOR DETAILED INFORMATION (SUCH AS VALVES, INSTRUMENTATION, HOSES, SLOPES AND PIPE INSULATION) REFER TO P&IDs AND SPECIFICATIONS.
- UNLESS CLEARLY NOTED ON THE DRAWINGS, CONTRACTOR IS RESPONSIBLE FOR LOCATING INSTRUMENTS AND MANUAL AND AUTOMATED VALVES FOR EASE OF MAINTENANCE AND ACCESSIBILITY.
- FOR MANUAL AND AUTOMATED VALVES AND INSTRUMENTS, REFER TO SPECIFICATIONS AND SCHEDULES.
- CONTRACTOR IS RESPONSIBLE TO INSTALL DRAINS AT ALL LOW POINTS AND VENTS AT HIGH POINTS.
- REFERENCE DOCUMENTS:  
- PIPING, MECHANICAL AND ARCHITECTURAL SPECIFICATIONS  
- SCHEMATIC DRAWINGS.
- ANY DISCREPANCIES BETWEEN REFERENCE DOCUMENTS AND PIPING PLANS SHALL BE NOTED TO THE OWNER AND APPROVED PRIOR TO CONSTRUCTION.
- ROUTING AND PENETRATIONS TO BE COORDINATED WITH OTHER PIPING AND DISCIPLINES.
- CONTRACTORS MUST VERIFY AND FIELD ROUTE CONNECTIONS TO EQUIPMENT. COORDINATE WITH SKID MANUFACTURE TO DETERMINE FINAL CONNECTION.
- CALCULATE REQUIREMENTS FOR THERMAL EXPANSION OF PIPING SYSTEMS AND FOR SELECTING AND DESIGNING EXPANSION JOINTS, LOOPS AND SWING CONNECTIONS. INCLUDE ANALYSIS DATA FOR EACH ANCHOR POINT AND ALIGNMENT GUIDE SIGNED AND SEALED BY STATE OF MAINE QUALIFIED PROFESSIONAL ENGINEER. REFER TO SPEC SECTION 230516 FOR FURTHER DETAILS AND REQUIREMENTS.

**KEYED NOTES**

- PIPE SUPPORT LOCATION. PROVIDE ADJUSTABLE PIPE SUPPORT SADDLE WITH U BOLT. SUPPORT SHALL BE GALVANIZED FOR EXTERIOR APPLICATION.
- COIL FIT UP AND CONNECTIONS SERVING EACH AHU SHALL BE LOCATED WITH THE PIPE ENCLOSURE FOR ACCESS ON THE ROOF. REFER TO SCHEMATICS FOR COIL FIT UP REQUIREMENTS AND DETAILS ON MP-802.
- PROVIDE P TRAP FOR CONDENSATE OFF OF COOLING COIL DRIP PAN. MATCH SIZE TO DRIP PAN CONNECTION SIZE. DISCHARGE ONTO ROOF. REFER TO MP-802 FOR TRAP DETAIL.

Revision	By	App'd	DD.MM.YYYY
1	ADDENDUM #1		09/16/2016
0	INTERIOR FIT OUT - ISSUED FOR CONSTRUCTION		08/19/2016
	PACKAGE D - PROCESS		09/16/2016
	PACKAGE C - INTERIOR FIT-OUT		08/19/2016
	PACKAGE B - SUPERSTRUCTURE & SHELL		08/05/2016
	PACKAGE A - FOUNDATIONS & BELOW SLAB		07/22/2016
	Issued		DD.MM.YYYY

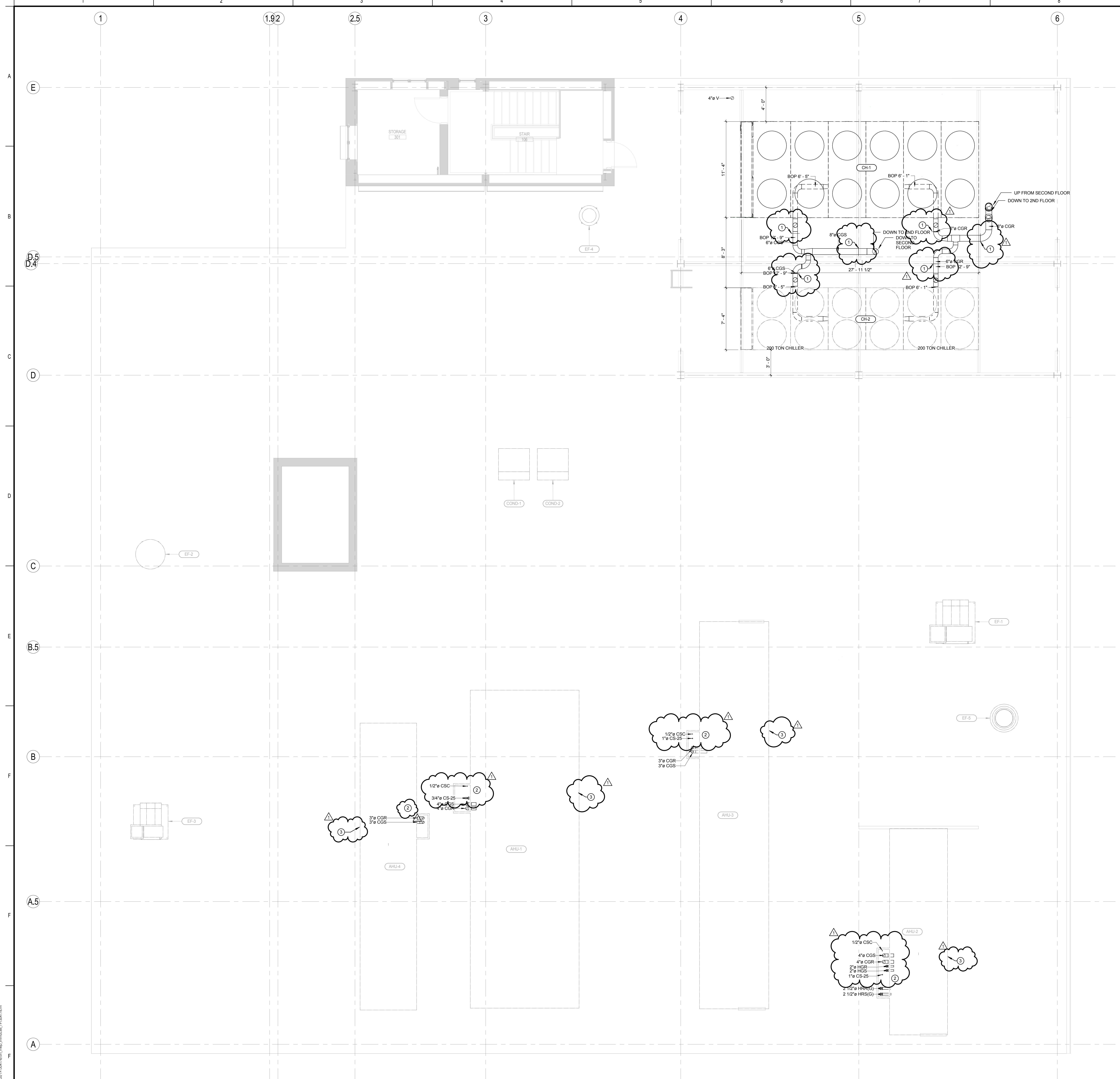
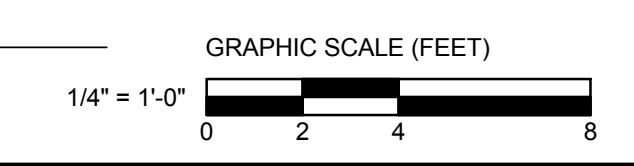


Client/Project  
**IMMUCELL**

Lot 11 - Second Tee Business Park  
1039 Riverside Street  
Portland, Maine 04103

Title  
**ROOF - MECHANICAL PIPING PLAN**

Project No.	Scale
191504176	1/4" = 1'-0"
Revision	Drawing No.
1	<b>MP-603-C</b>



**1 ROOF - MECHANICAL PIPING PLAN**  
1/4" = 1'-0"

DRAWING MADE BY: PIPING CONTRACTOR; DATE: 08/19/2016; PROJECT: IMMUCELL; SHEET: MP-603-C

ORIGINAL SHEET: A08 E (3/14/16)