

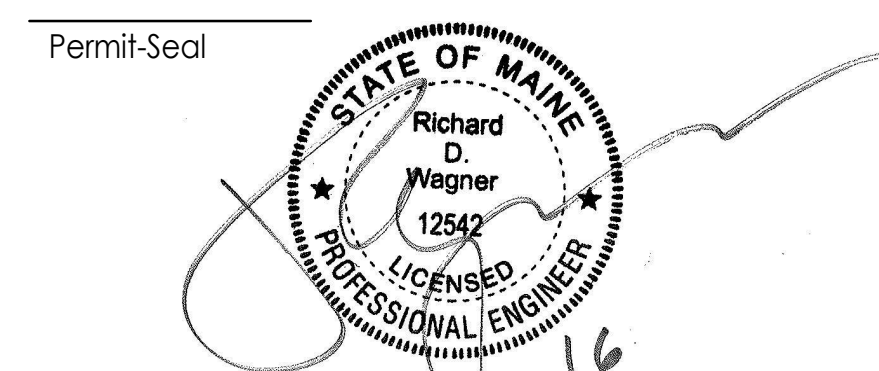
GENERAL NOTES

- GENERAL PIPE ROUTING IS REPRESENTED ON THE DRAWINGS. FINAL ROUTING, ISOMETRICS AND FIELD FIT-UP BY PIPING CONTRACTOR.
- CONTRACTOR TO FIELD COORDINATE ALL ARCHITECTURAL, STRUCTURAL AND MECHANICAL COMPONENTS. RE-ROUTING OF SERVICES CONTRARY TO DESIGN DOCUMENTS MAY OCCUR AND SHALL BE COORDINATED AND OWNER APPROVED DURING CONSTRUCTION.
- MISCELLANEOUS STRUCTURAL STEEL FOR PIPING SUPPORT SHALL BE CONTRACTOR FURNISHED AND INSTALLED.
- FOR DETAILED INFORMATION (SUCH AS VALVES, INSTRUMENTATION, HOSES, SLOPES AND PIPE INSULATION) REFER TO TRADES AND SPECIFICATIONS.
- UNLESS CLEARLY NOTED ON THE DRAWINGS, CONTRACTOR IS RESPONSIBLE FOR LOCATING INSTRUMENTS AND MANUAL AND AUTOMATED VALVES FOR EASE OF MAINTENANCE AND ACCESSIBILITY.
- FOR MANUAL AND AUTOMATED VALVES AND INSTRUMENTS, REFER TO SPECIFICATIONS AND SCHEDULES.
- CONTRACTOR IS RESPONSIBLE TO INSTALL DRAINS AT ALL LOW POINTS AND VENTS AT HIGH POINTS.
- REFERENCE DOCUMENTS:
- PIPING, MECHANICAL AND ARCHITECTURAL SPECIFICATIONS
- SCHEMATIC DRAWINGS
- ANY DISCREPANCIES BETWEEN REFERENCE DOCUMENTS AND PIPING PLANS SHALL BE NOTED TO THE OWNER AND APPROVED PRIOR TO CONSTRUCTION.
- ROUTING AND PENETRATIONS TO BE COORDINATED WITH OTHER PIPING AND DISCIPLINES.
- CONTRACTORS MUST VERIFY AND FIELD ROUTE CONNECTIONS TO EQUIPMENT COORDINATE WITH SKID MANUFACTURE TO DETERMINE FINAL CONNECTION.
- CALCULATE REQUIREMENTS FOR THERMAL EXPANSION OF PIPING SYSTEMS AND FOR SELECTING AND DESIGNING EXPANSION JOINTS, LOOPS AND SWING CONNECTIONS. INCLUDE ANALYSIS DATA FOR EACH ANCHOR POINT AND ALIGNMENT GUIDE SIGNED AND SEALED BY STATE OF MAINE QUALIFIED PROFESSIONAL ENGINEER. REFER TO SPEC SECTION 230516 FOR FURTHER DETAILS AND REQUIREMENTS.

KEYED NOTES

- PROVIDE SPRAY SARCO AP114 STAINLESS STEEL PUMP TRAP. CONTRACTOR TO COORDINATE FINAL LOCATION. FIELD ROUTE CONDENSATE FROM LACTOSE 200L AND LACTOSE 20L TO NEW PUMP TRAPS. SEE PROCESS PIDS FOR ADDITIONAL INFORMATION.

Revision	By	App'd	DD.MM.YYYY
1	ADDENDUM #1		09/16/2016
0	INTERIOR FIT OUT - ISSUED FOR CONSTRUCTION		08/19/2016
Revision			
PACKAGE D - PROCESS			
PACKAGE C - INTERIOR FIT-OUT			
PACKAGE B - SUPERSTRUCTURE & SHELL			
PACKAGE A - FOUNDATIONS & BELOW SLAB			
Issued			

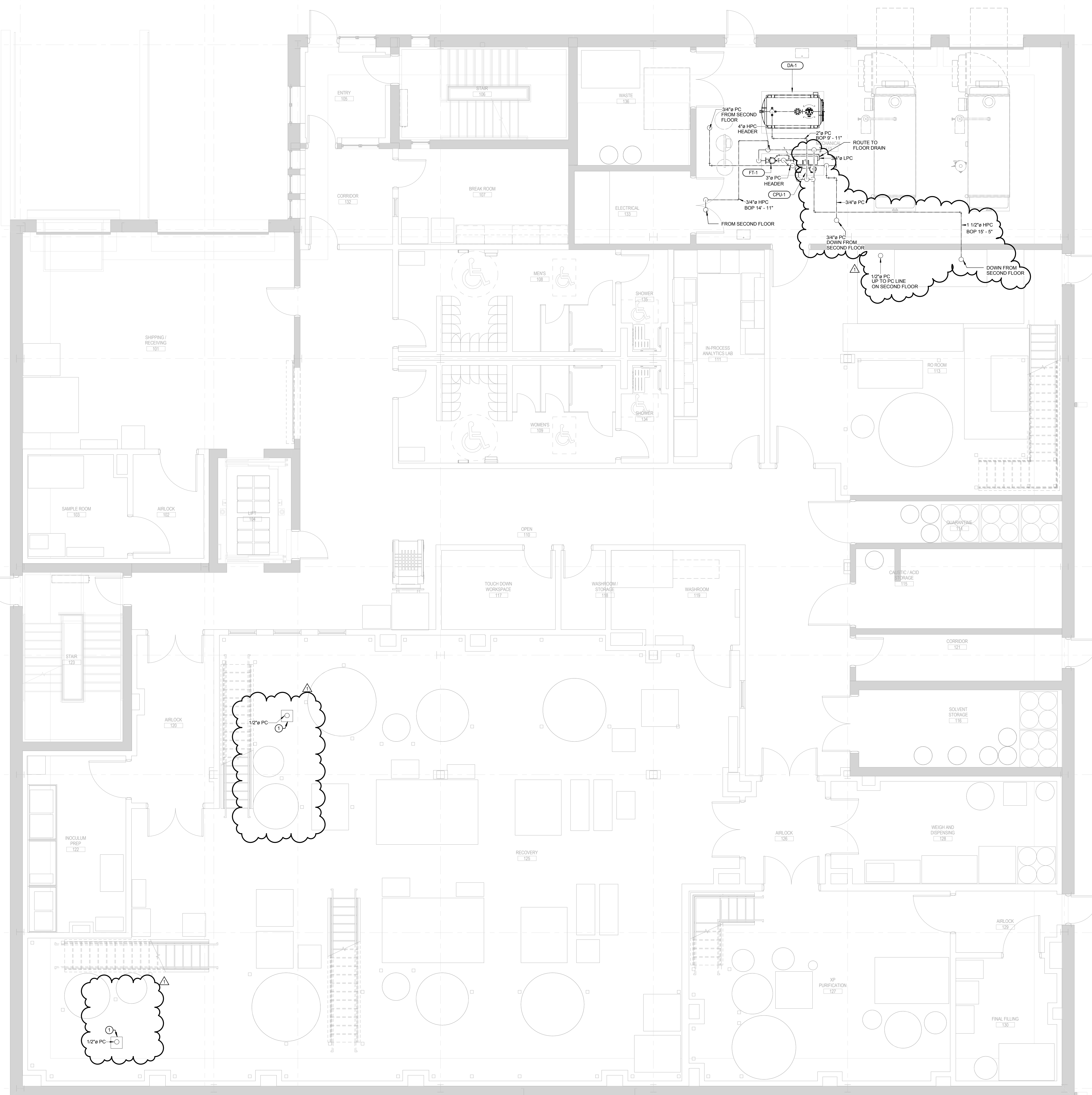
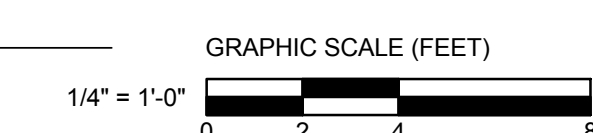


Client/Project
IMMUCELL

Lot 11 - Second Tee Business Park
1039 Riverside Street
Portland, Maine 04103

Title
FIRST FLOOR - CONDENSATE PIPING PLAN

Project No.	Scale
191504176	1/4" = 1'-0"
Revision	Drawing No.
1	MP-401-C



1 FIRST FLOOR - CONDENSATE PIPING PLAN
1/4" = 1'-0"

DRAWING: C:\Users\jgallagher\OneDrive\Documents\191504176\191504176.dwg; IMP: immucell; 11/23/2016 10:41:01 AM

ORIGINAL SHEET: A08 E (34x44)