

GENERAL NOTES

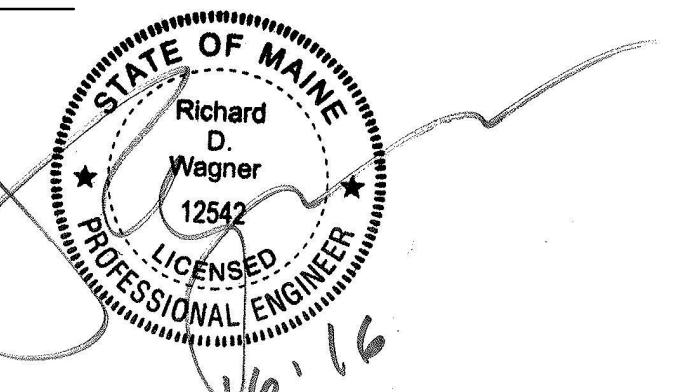
- GENERAL PIPE ROUTING IS REPRESENTED ON THE DRAWINGS. FINAL ROUTING, ISOMETRICS AND FIELD FIT-UP BY PIPING CONTRACTOR.
- CONTRACTOR TO FIELD COORDINATE ALL ARCHITECTURAL, STRUCTURAL AND MECHANICAL COMPONENTS. RE-ROUTING OF SERVICES CONTRARY TO DESIGN DOCUMENTS MAY OCCUR AND SHALL BE COORDINATED AND OWNER APPROVED DURING CONSTRUCTION.
- MISCELLANEOUS STRUCTURAL STEEL FOR PIPING SUPPORT SHALL BE CONTRACTOR FURNISHED AND INSTALLED.
- FOR DETAILED INFORMATION (SUCH AS VALVES, INSTRUMENTATION, HOSES, SLOPES AND PIPE INSULATION) REFER TO P&IDs AND SPECIFICATIONS.
- UNLESS CLEARLY NOTED ON THE DRAWINGS, CONTRACTOR IS RESPONSIBLE FOR LOCATING INSTRUMENTS AND MANUAL AND AUTOMATED VALVES FOR EASY OF MAINTENANCE AND ACCESSIBILITY.
- FOR MANUAL AND AUTOMATED VALVES AND INSTRUMENTS, REFER TO SPECIFICATIONS AND SCHEDULES.
- CONTRACTOR IS RESPONSIBLE TO INSTALL DRAINS AT ALL LOW POINTS AND VENTS AT HIGH POINTS.
- REFERENCE DOCUMENTS:
- PIPING MECHANICAL AND ARCHITECTURAL SPECIFICATIONS.
- SCHEMATIC DRAWINGS.
- ANY DISCREPANCIES BETWEEN REFERENCE DOCUMENTS AND PIPING PLANS SHALL BE NOTED TO THE OWNER AND APPROVED PRIOR TO CONSTRUCTION.
- ROUTING AND PENETRATIONS TO BE COORDINATED WITH OTHER PIPING AND DISCIPLINES.
- CONTRACTORS MUST VERIFY AND FIELD ROUTE CONNECTIONS TO EQUIPMENT COORDINATE WITH SKID MANUFACTURER TO DETERMINE FINAL CONNECTION.
- CALCULATE REQUIREMENTS FOR THERMAL EXPANSION OF PIPING SYSTEMS AND FOR SELECTING AND DESIGNING EXPANSION JOINTS, LOOPS AND SWING CONNECTIONS. INCLUDE ANALYSIS DATA FOR EACH ANCHOR POINT AND ALIGNMENT GUIDE SIGNED AND SEALED BY STATE OF MAINE QUALIFIED PROFESSIONAL ENGINEER. REFER TO SPEC SECTION 230516 FOR FURTHER DETAILS AND REQUIREMENTS.

REVISED NOTES

- PROVIDE CARBON MONOXIDE DETECTOR WHERE INDICATED.

Revision	By	App'd	DD.MM.YYYY
1	ADDENDUM #1		09/16/2016
0	INTERIOR FIT-OUT - ISSUED FOR CONSTRUCTION		08/19/2016
Revision			
PACKAGE D - PROCESS			09/16/2016
PACKAGE C - INTERIOR FIT-OUT			08/19/2016
PACKAGE B - SUPERSTRUCTURE & SHELL			08/05/2016
PACKAGE A - FOUNDATIONS & BELOW SLAB			07/22/2016
Issued			

Permit-Seal

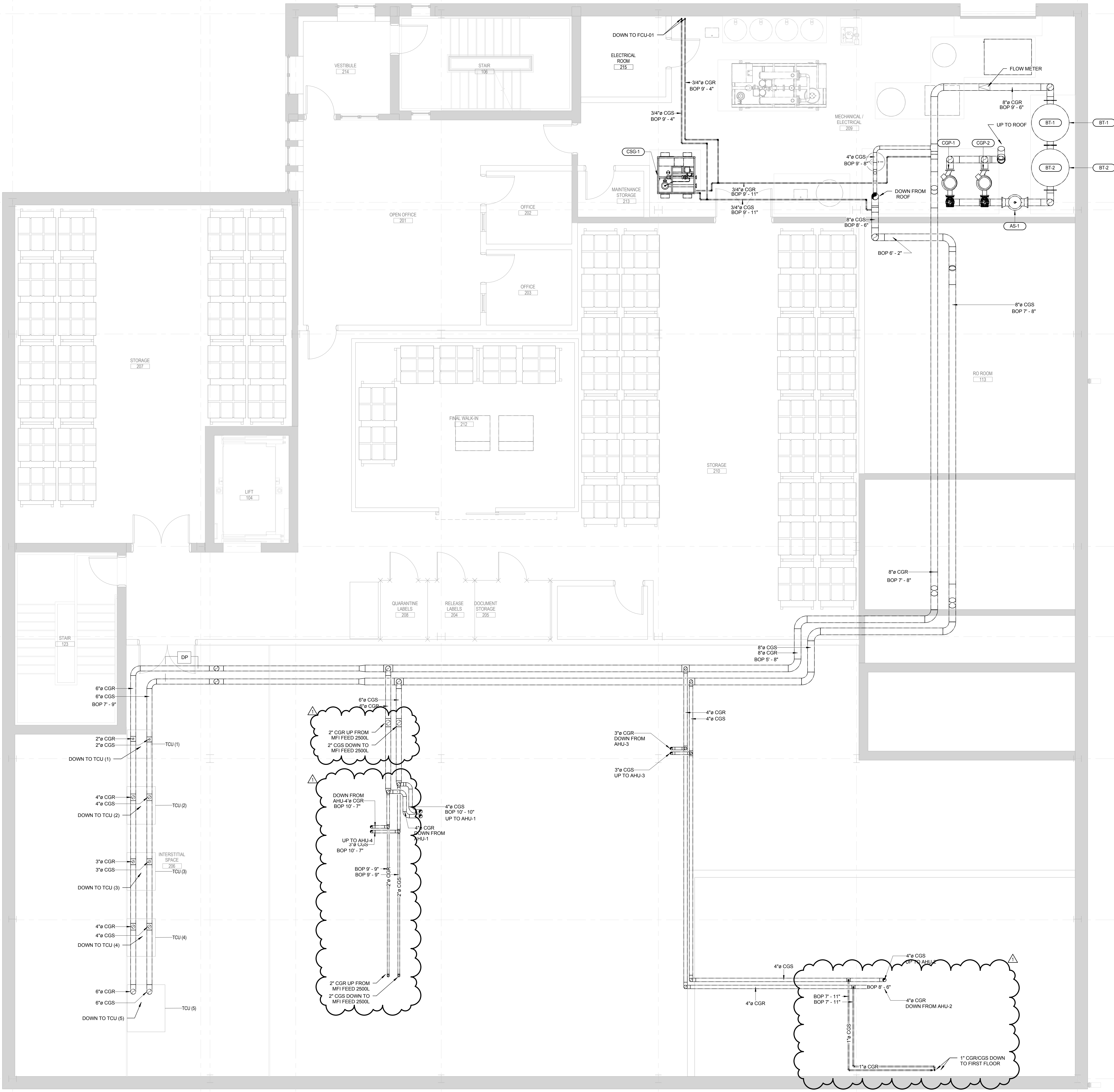
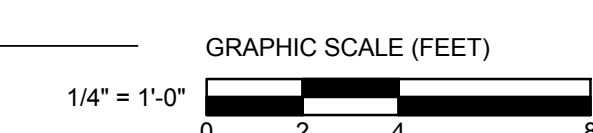


Client/Project
IMMUCELL

Lot 11 - Second Tee Business Park
1039 Riverside Street
Portland, Maine 04103

Title
SECOND FLOOR - CHILLED GLYCOL PIPING PLAN

Project No. 191504176 Scale 1/4" = 1'-0"
Revision 1 Drawing No. **MP-102-C**



1 SECOND FLOOR - CHILLED GLYCOL PIPING PLAN
MP-102-C 1/4" = 1'-0"

DRAWING MADE BY: PIPING CONTRACTOR; CHECKED BY: PIPING CONTRACTOR; DESIGNED BY: PIPING CONTRACTOR; DATE: 08/19/2016

ORIGINAL SHEET: A06 E (3/14/16)