

**GENERAL NOTES**

- BOD DIMENSIONS AND RATINGS ARE DIAGRAMMATIC IN NATURE. MECHANICAL CONTRACTOR IS RESPONSIBLE FOR FIELD VERIFICATION, ROUTING AND COORDINATION OF NEW DUCTWORK.
  - ALL BOD DIMENSIONS ARE IN REFERENCE THE FIRST FLOOR FINISHED FLOOR.
  - PROVIDE BALANCE DAMPERS AS INDICATED ON THE DRAWINGS AND AS REQUIRED FOR SYSTEM BALANCING.
  - FLEXIBLE DUCT CONNECTIONS TO AIR TERMINAL SHALL BE NO LONGER THAN 5' IN LENGTH. BENDS OVER 90° ARE NOT PERMITTED.
  - FLEXIBLE DUCT CONNECTIONS TO HEPA FILTERS ARE NOT PERMITTED.
- KEYED NOTES**
- PROVIDE A 24"x14" SUPPLY GRILLE. SEE SCHEDULE FOR MODEL INFORMATION.
  - PROVIDE A 12"x10" SUPPLY GRILLE. SEE SCHEDULE FOR MODEL INFORMATION.
  - COOLER EVAPORATORS (TYP. OF 2) SHALL BE MOUNTED TO THE COOLER WALL. PROVIDE REFRIGERANT CONNECTIONS AS PER MANUFACTURE SELECTION AND FIELD ROUTE CONDENSATE TO NEAREST FLOOR DRAIN.

Revision	By	App'd	DD/MYY
0			08/19/2016
INTERIOR FIT-OUT ISSUED FOR CONSTRUCTION			
<b>PACKAGE C - INTERIOR FIT-OUT</b>			
PACKAGE B - SUPERSTRUCTURE & SHELL			
PACKAGE A - FOUNDATIONS & BELOW SLAB			
Issued	By	App'd	DD/MYY
			08/19/2016
			08/03/2016
			07/22/2016

Permit/Seal

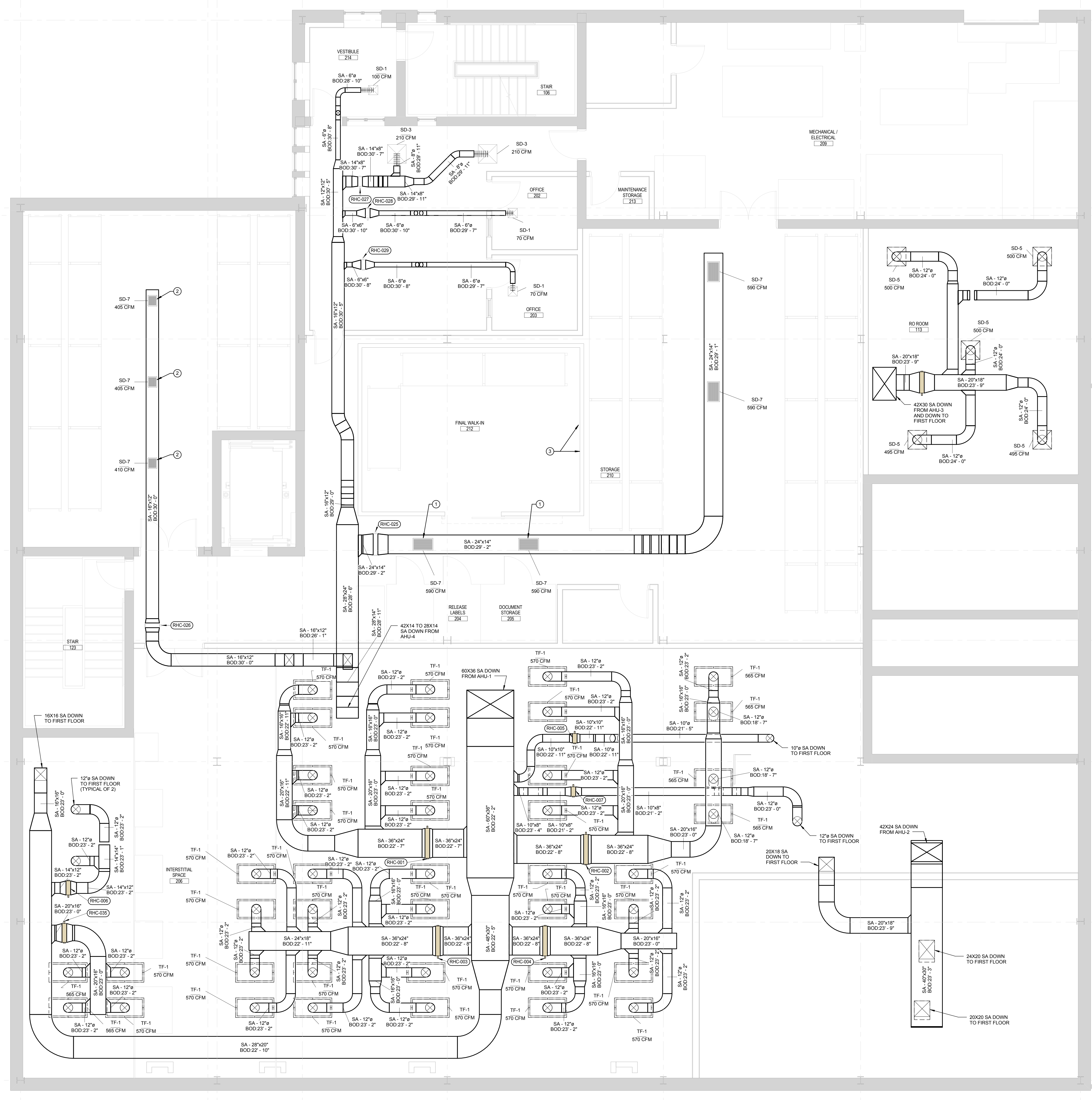
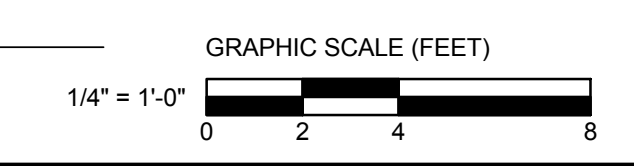
Client/Project  
**IMMUCELL**

Lot 11 - Second Tee Business Park  
 1039 Riverside Street  
 Portland, Maine 04103

Title  
**SECOND FLOOR - SUPPLY DUCTWORK PLAN**

Project No. 191504176  
 Scale 1/4" = 1'-0"  
 Revision 0  
 Drawing No.

**MH-302-C**



**1 SECOND FLOOR - SUPPLY HVAC PLAN**  
 1/4" = 1'-0"

ORIGINAL SHEET: A06 (3/14/16)