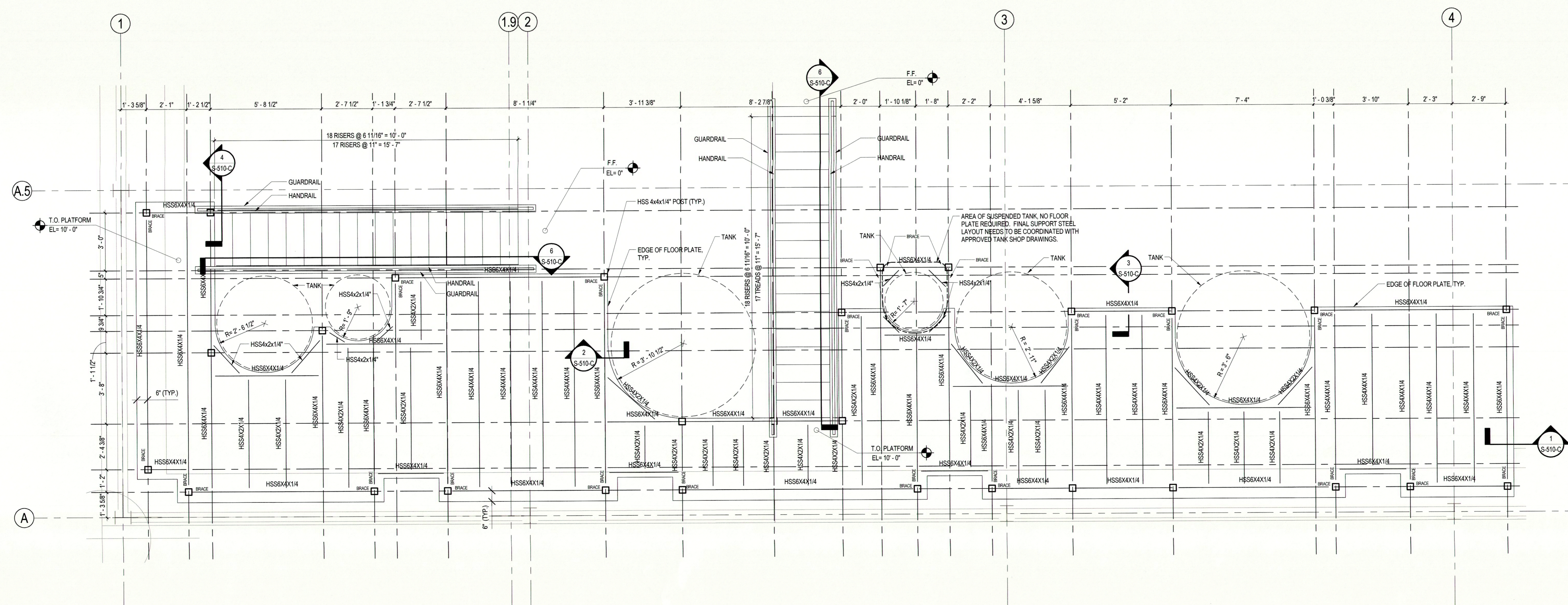


1 XP PURIFICATION EQUIPMENT PLATFORM
3/8\" = 1'-0\"



2 FERMENTATION/RECOVERY TRAIN (2) EQUIPMENT PLATFORM
3/8\" = 1'-0\"

NOTES:

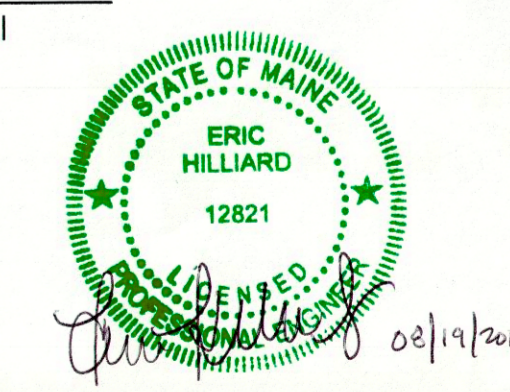
- GROUND FLOOR ELEVATION = 0'-0\". TOP OF STEEL ELEVATION = REFER TO INDIVIDUAL PLAN NOTE.
- ALL DIMENSIONS ARE TO CENTERLINE OF STEEL (U.N.O.)
- ALL FRAMING, RAILINGS AND MISCELLANEOUS STEEL FOR THE PLATFORM AND STAIRS TO BE STAINLESS STEEL. REFER TO SPECIFICATION 055200.
- FLOOR PLATE TO BE REINFORCED FIBERGLASS PLATE. REFER TO SPECIFICATION 066101.
- STAIR TREADS TO BE STAINLESS STEEL STRUCTURAL ANGLES WITH FIBERGLASS REINFORCED STAIR TREAD COVERS. REFER TO SPECIFICATIONS 055200 AND 066103.
- ALL STAINLESS STEEL FRAMING CONNECTIONS TO BE FULLY WELDED AND GROUND SMOOTH. REFER TO DETAIL SHEET S-510-C.
- REFER TO SHEET S-510-C FOR TYPICAL BRACING DETAIL. REFER TO PLATFORM GUARDS PLANS FOR REQUIRED BRACING LOCATIONS.
- PROVIDE RAILINGS/GUARDS AT ALL OPEN EDGES OF PLATFORMS. REFER TO DETAIL S/S-510-C.
- MAXIMUM FIBERGLASS PLATE SPAN BETWEEN SUPPORTING MEMBERS SHALL BE 24\".

LEGEND:

- BRACE - INDICATES BRACE LOCATION. REFER TO FRAMING PLANS FOR LOCATIONS. REFER TO DETAIL S/S-510-C FOR DETAIL.

Revision	By	App'd	CD	MM	YYYY
0	INTERIOR FIT OUT - ISSUED FOR CONSTRUCTION	TAW	EH	08/19/2016	
	PACKAGE C - INTERIOR FIT-OUT			08/19/2016	
	PACKAGE B - SUPERSTRUCTURE & SHELL			08/05/2016	
	PACKAGE A - FOUNDATIONS & BELOW SLAB			07/22/2016	
	ISSUED			06/04/2016	

Permit-Seal



Client/Project
IMMUCELL

Lot 11 - Second Tee Business Park
1039 Riverside Street
Portland, Maine 04103

Title
PLATFORM FRAMING PLANS

Project No. 191504176
Scale As Indicated
Revision 0
Drawing No.



S-401-C