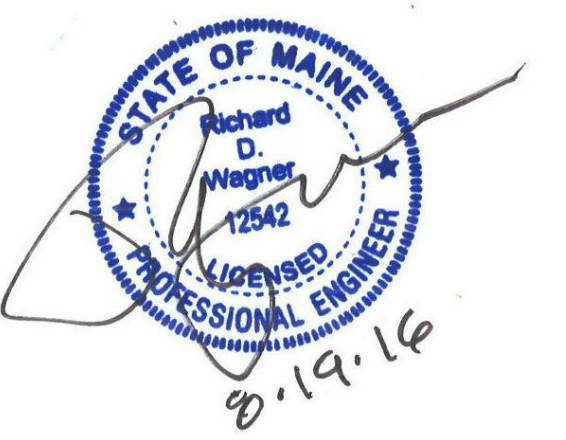


KEYED NOTES

- REFER TO PL-202 FOR SIZING AND PIPING FIR UP OF DOMESTIC WATER HEATER AND RECIRCULATION LOOPS FOR HOT WATER AND TEPID WATER FOR THE SAFETY SHOWERS.
- PROVIDE 3/4" CW TO GLYCOL MAKE UP STATION. PROVIDE INDIRECT CONNECTION TO TANK FOR MIXING WITH GLYCOL.



Revision	By	App'd	DD.MM.YYYY
0			08/19/2016
INTERIOR FIT-OUT - ISSUED FOR CONSTRUCTION			
PACKAGE C - INTERIOR FIT-OUT			
PACKAGE B - SUPERSTRUCTURE & SHELL			
PACKAGE A - FOUNDATIONS & BELOW SLAB			
Issued			

Permit-Seal

Client/Project
 IMMUCELL

Lot 11 - Second Tee Business Park
 1039 Riverside Street
 Portland, Maine 04103

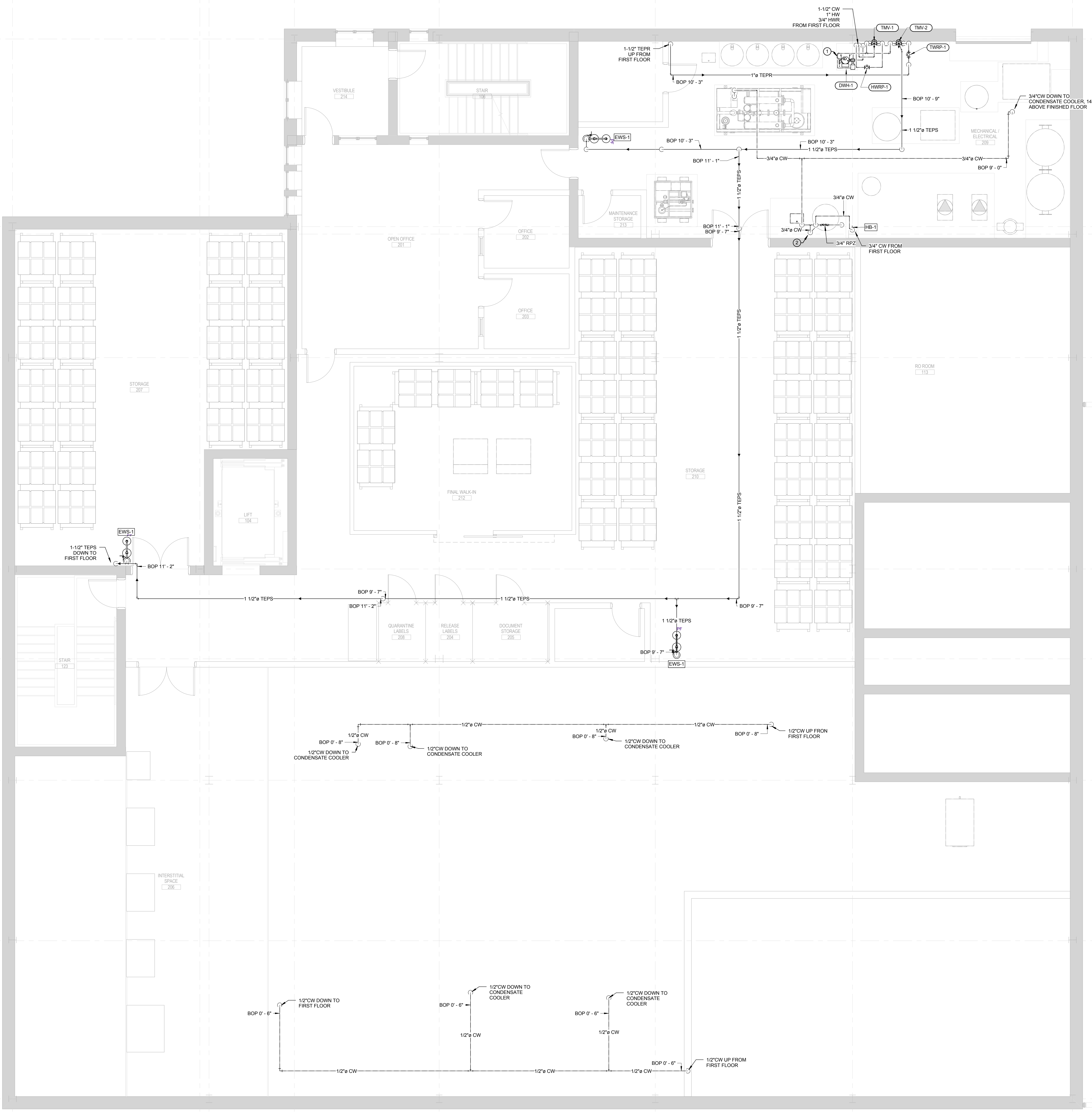
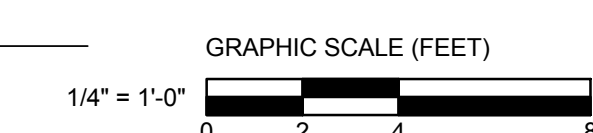
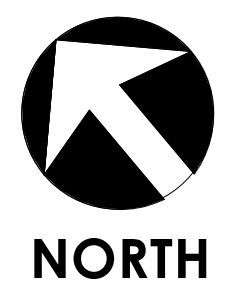
Title
SECOND FLOOR - DOMESTIC WATER PIPING PLAN

Project No.
 191504176

Scale
 1/4" = 1'-0"

Revision
 0

Drawing No.
PL-202-C



1 SECOND FLOOR - DOMESTIC WATER PIPING PLAN
 1/4" = 1'-0"

ORIGINAL SHEET: A08 E (3/14/16)