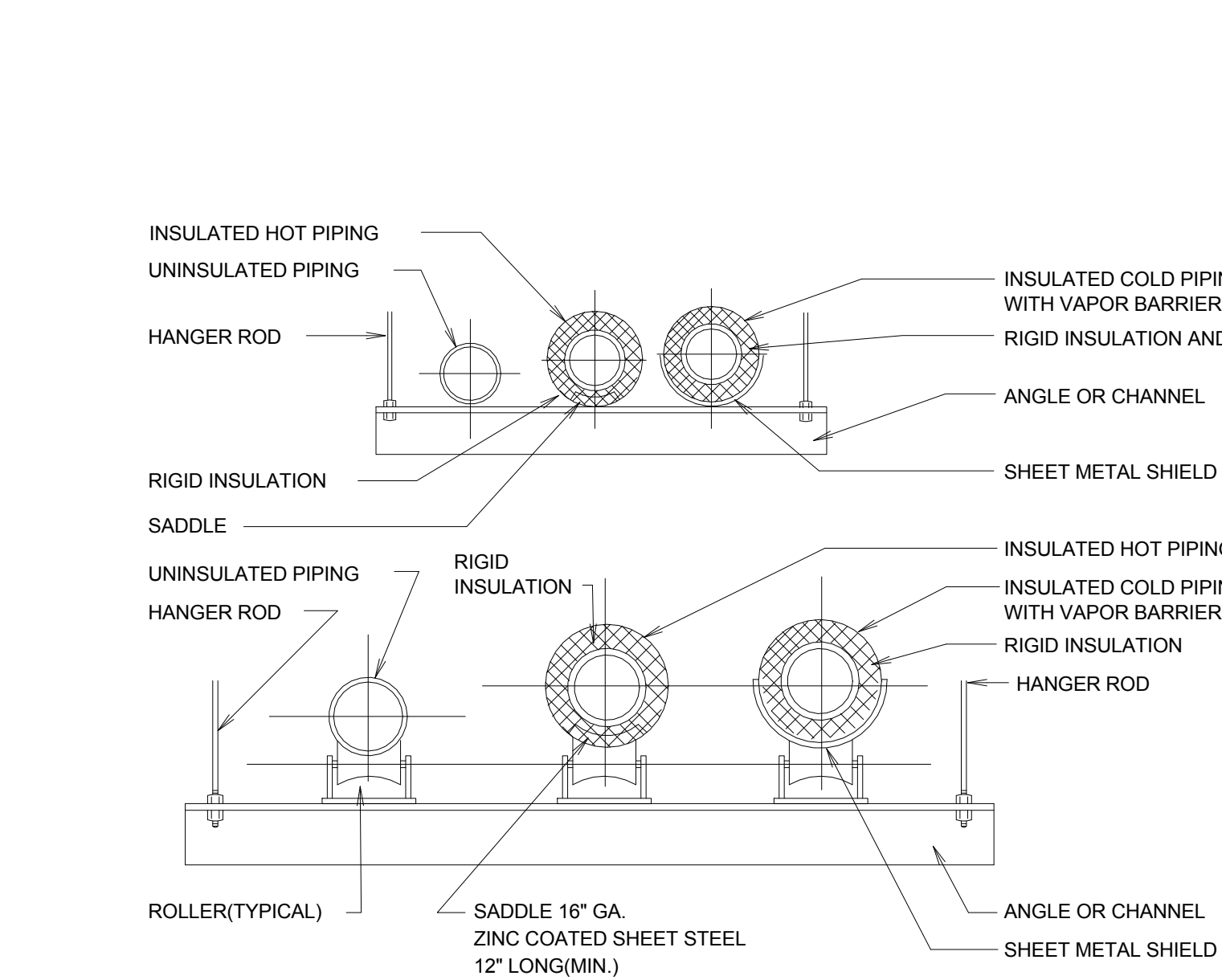


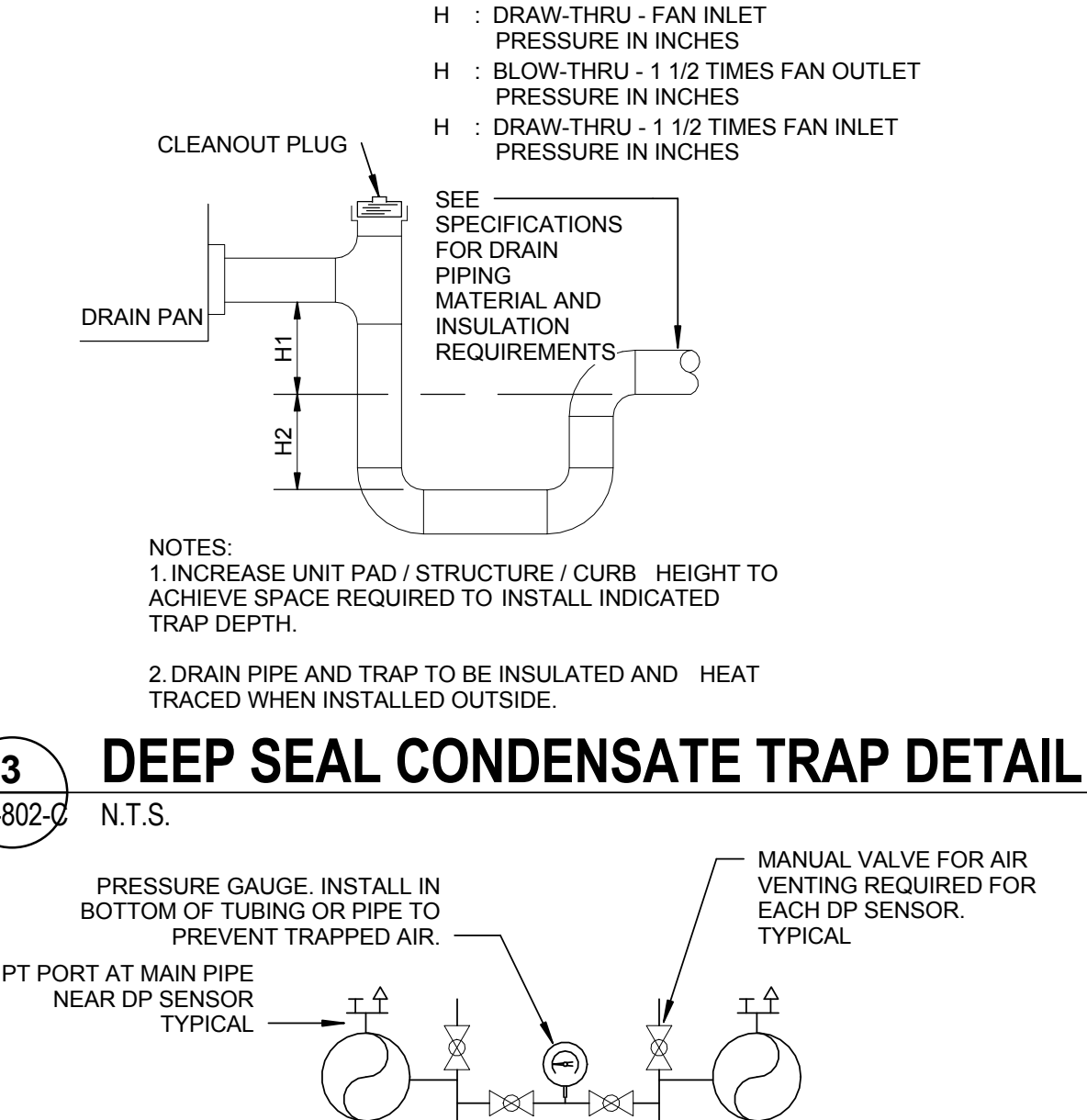
1 TYPICAL PIPE HANGER DETAILS
N.T.S.

NOTES:
1. MINIMUM WELD THICKNESS SHALL BE AS PER AWS D1.1 GUIDELINES



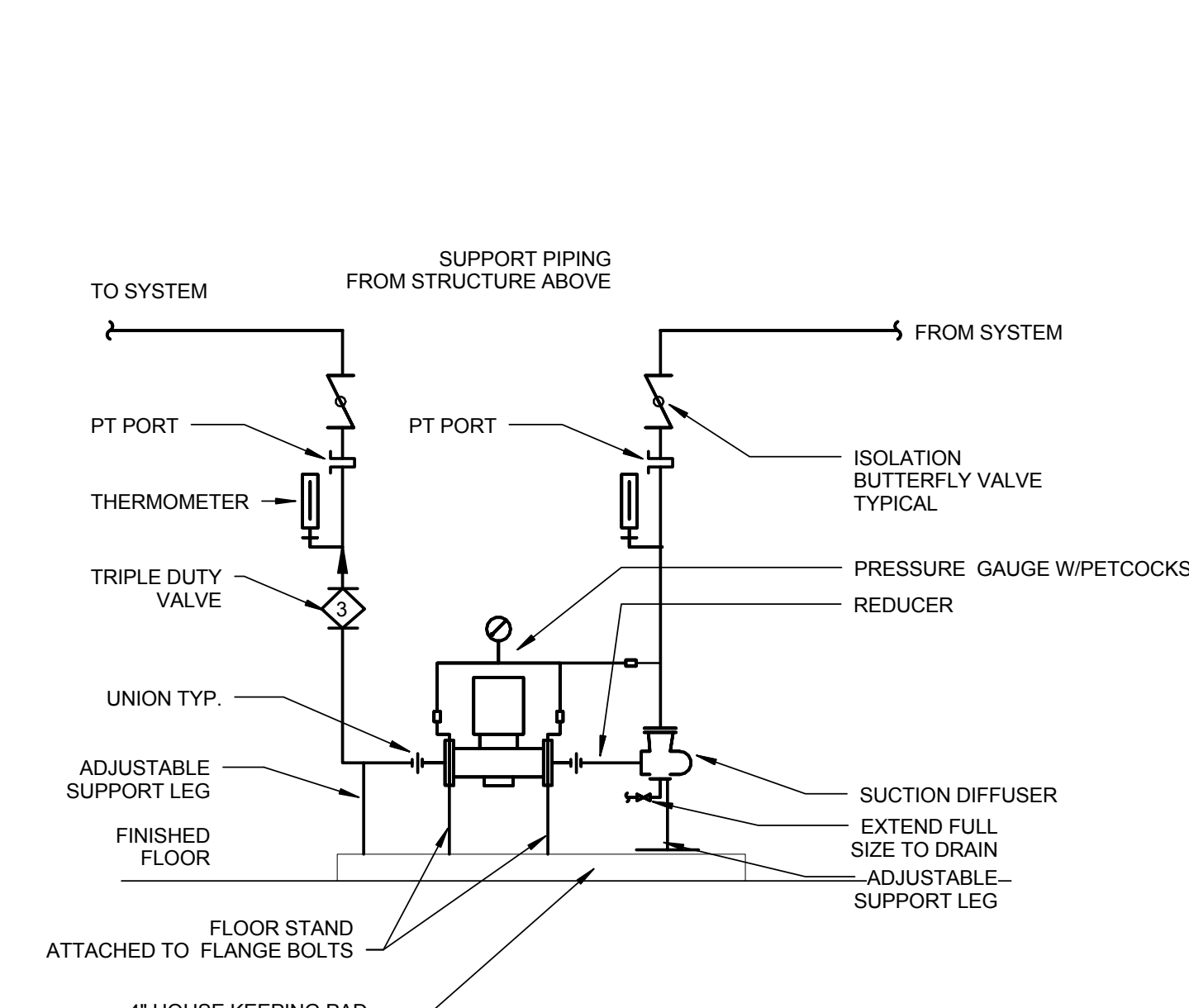
2 PIPE HANGERS UNGUIDED TRAPEZE TYPE
N.T.S.

NOTES:
1. USE MAXIMUM LOAD AS PER MANUFACTURER'S LISTING.
2. MAXIMUM ROD SIZE OF 3/4"



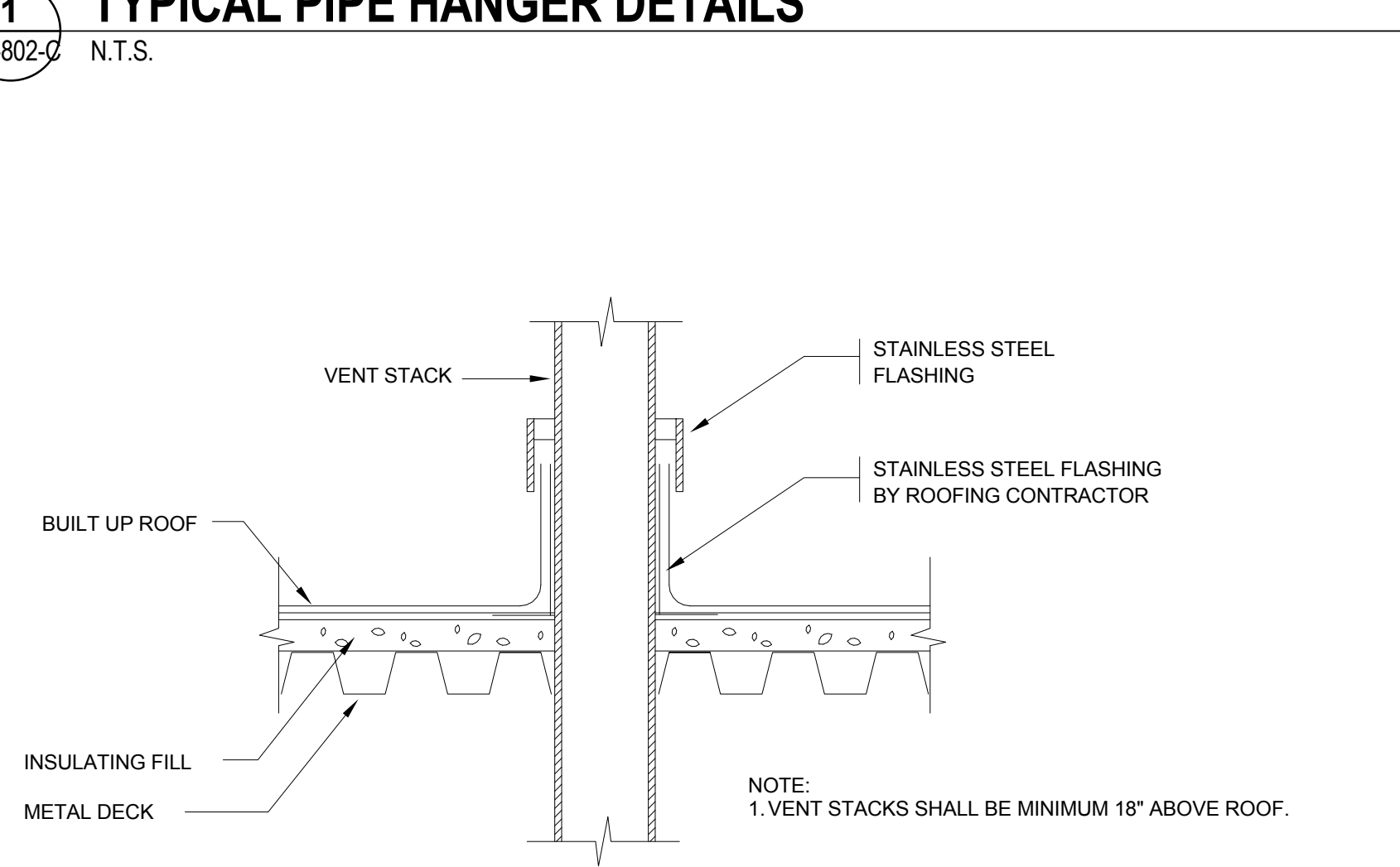
3 DEEP SEAL CONDENSATE TRAP DETAIL
N.T.S.

NOTES:
1. INCREASE UNIT PAD / STRUCTURE / CURB HEIGHT TO ACHIEVE SPACE REQUIRED TO INSTALL INDICATED TRAP DEPTH.
2. DRAIN PIPE AND TRAP TO BE INSULATED AND HEAT TRACED WHEN INSTALLED OUTSIDE.



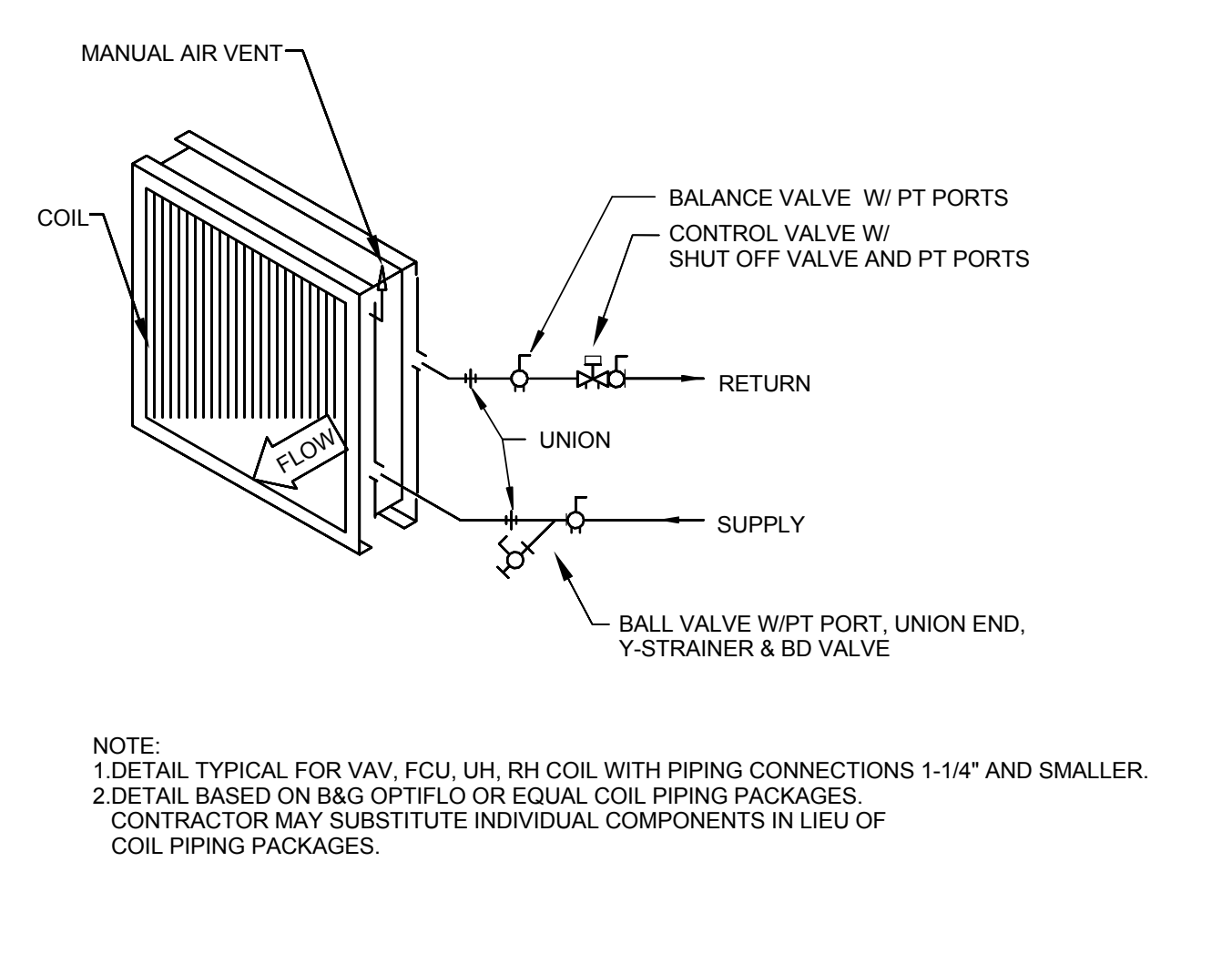
4 DIFFERENTIAL PRESSURE SENSOR DETAIL
N.T.S.

5 PUMP FIT UP DETAIL
N.T.S.



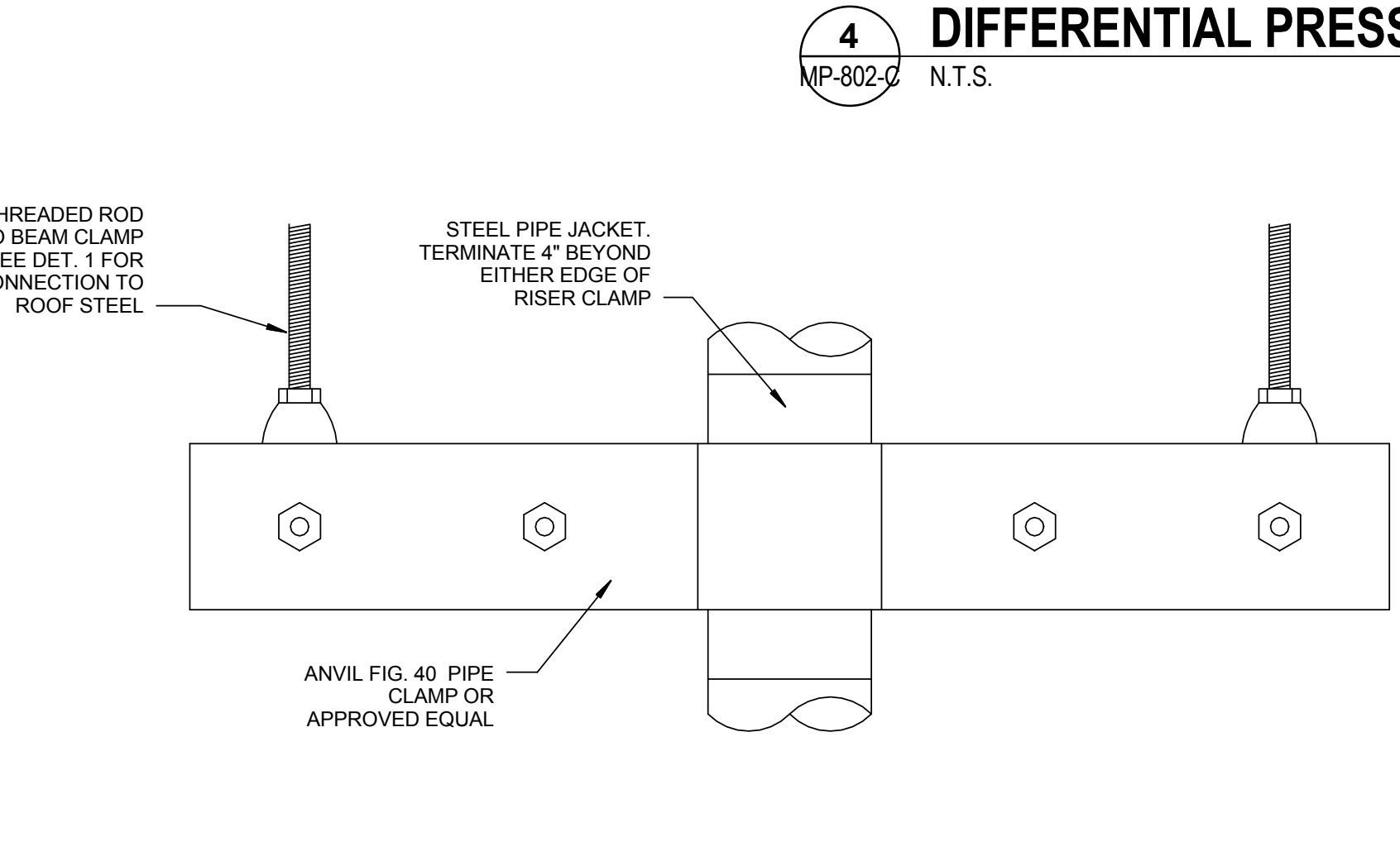
6 PIPE PENETRATION THROUGH ROOF DETAIL
N.T.S.

NOTE:
1. VENT STACKS SHALL BE MINIMUM 18" ABOVE ROOF.

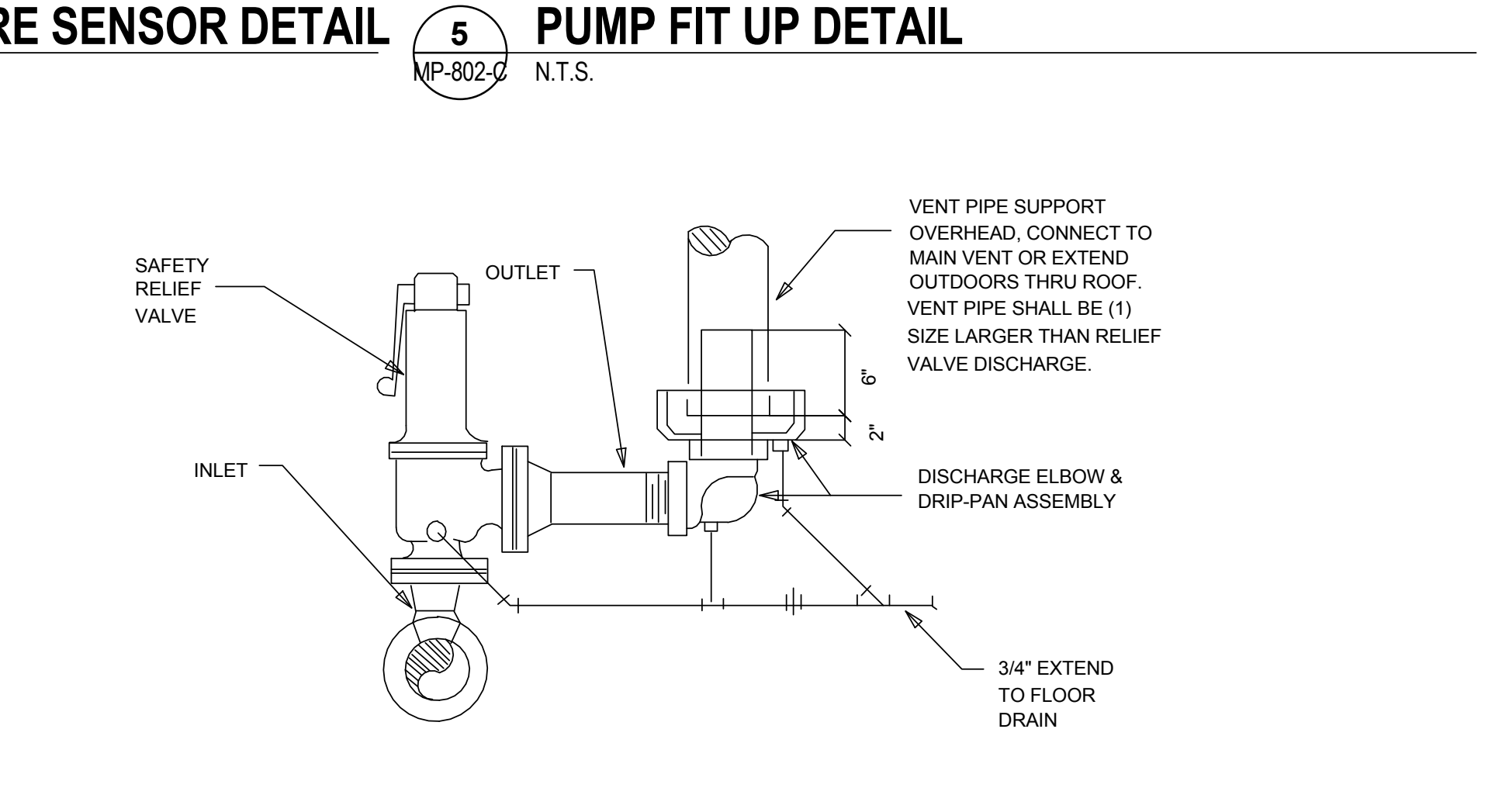


7 COIL PIPING DETAIL
N.T.S.

NOTE:
1. DETAIL TYPICAL FOR VAV, FCU, UH, RH COIL WITH PIPING CONNECTIONS 1-1/4" AND SMALLER.
2. DETAIL BASED ON 8&G OPTIFLO OR EQUAL COIL PIPING PACKAGES. CONTRACTOR MAY SUBSTITUTE INDIVIDUAL COMPONENTS IN LIEU OF COIL PIPING PACKAGES.

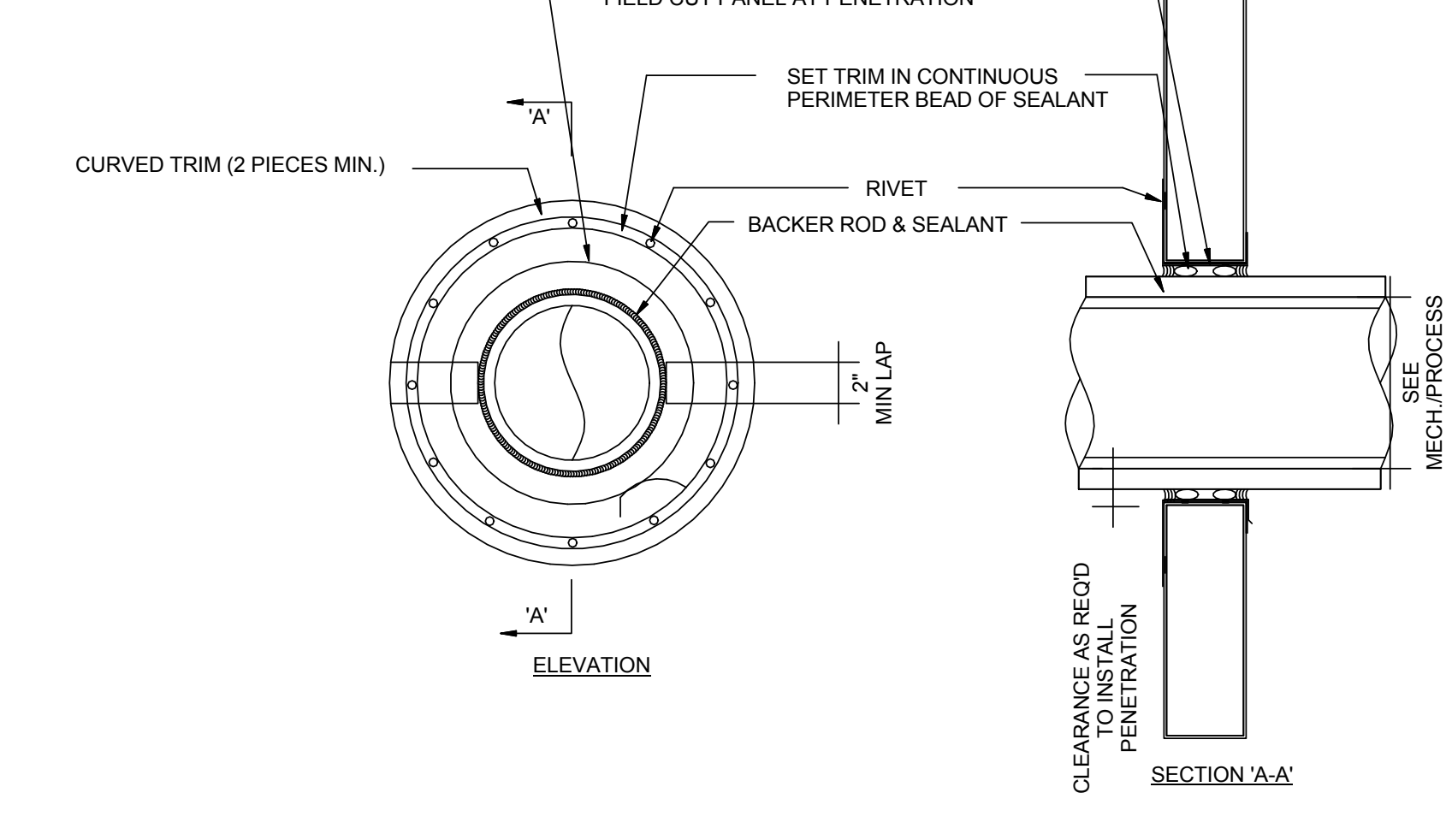


8 TYPICAL PIPE RISER SUPPORT
N.T.S.

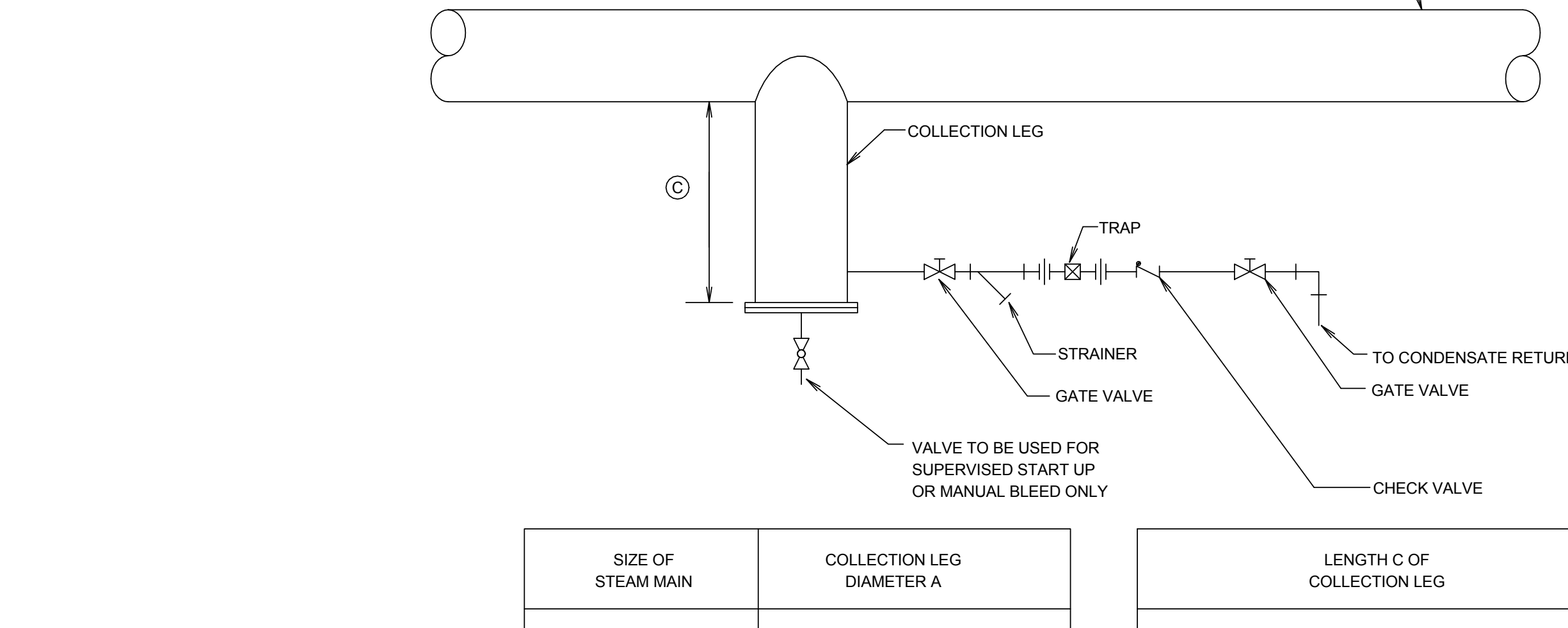


9 STEAM SAFETY-VALVE & DIP-PAN ASSEMBLY
N.T.S.

KEYED NOTES:
1. CONTROL VALVE PROVIDED BY HUMIDIFIER MANUFACTURER.

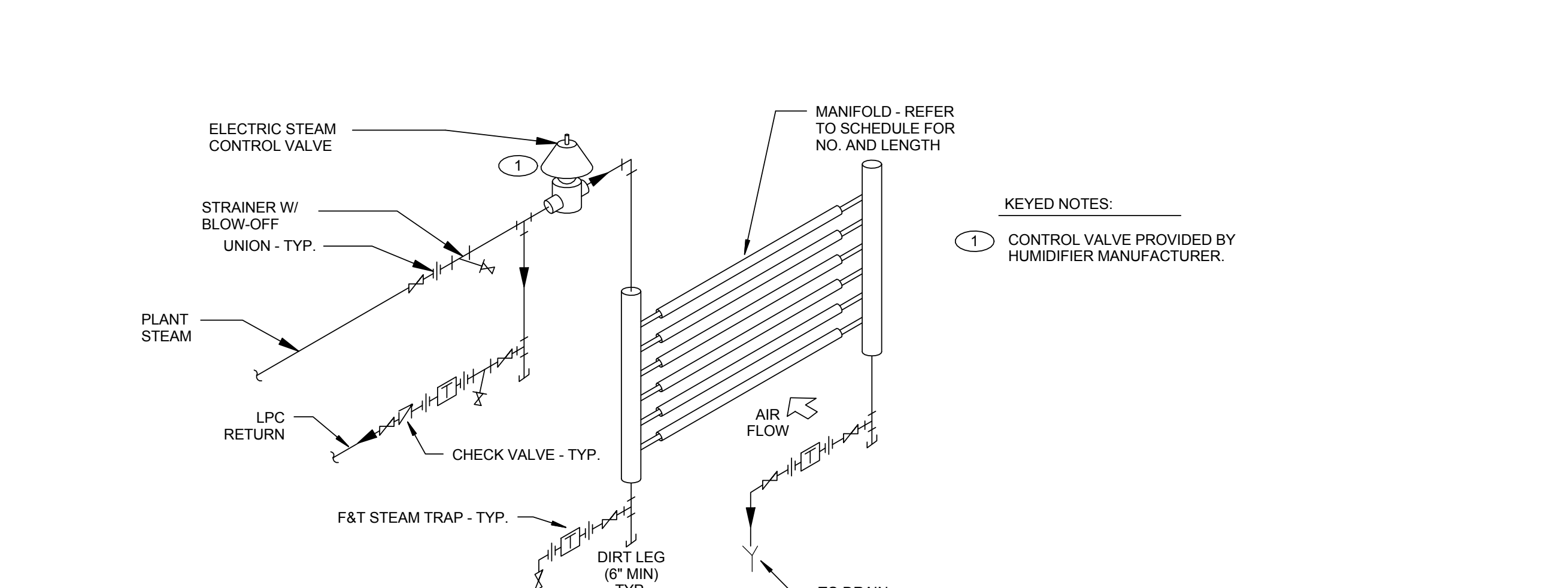


10 INSULATED PIPE, TUBE STEEL OR CONDUIT EXTERIOR WALL PENETRATION DETAIL
N.T.S.

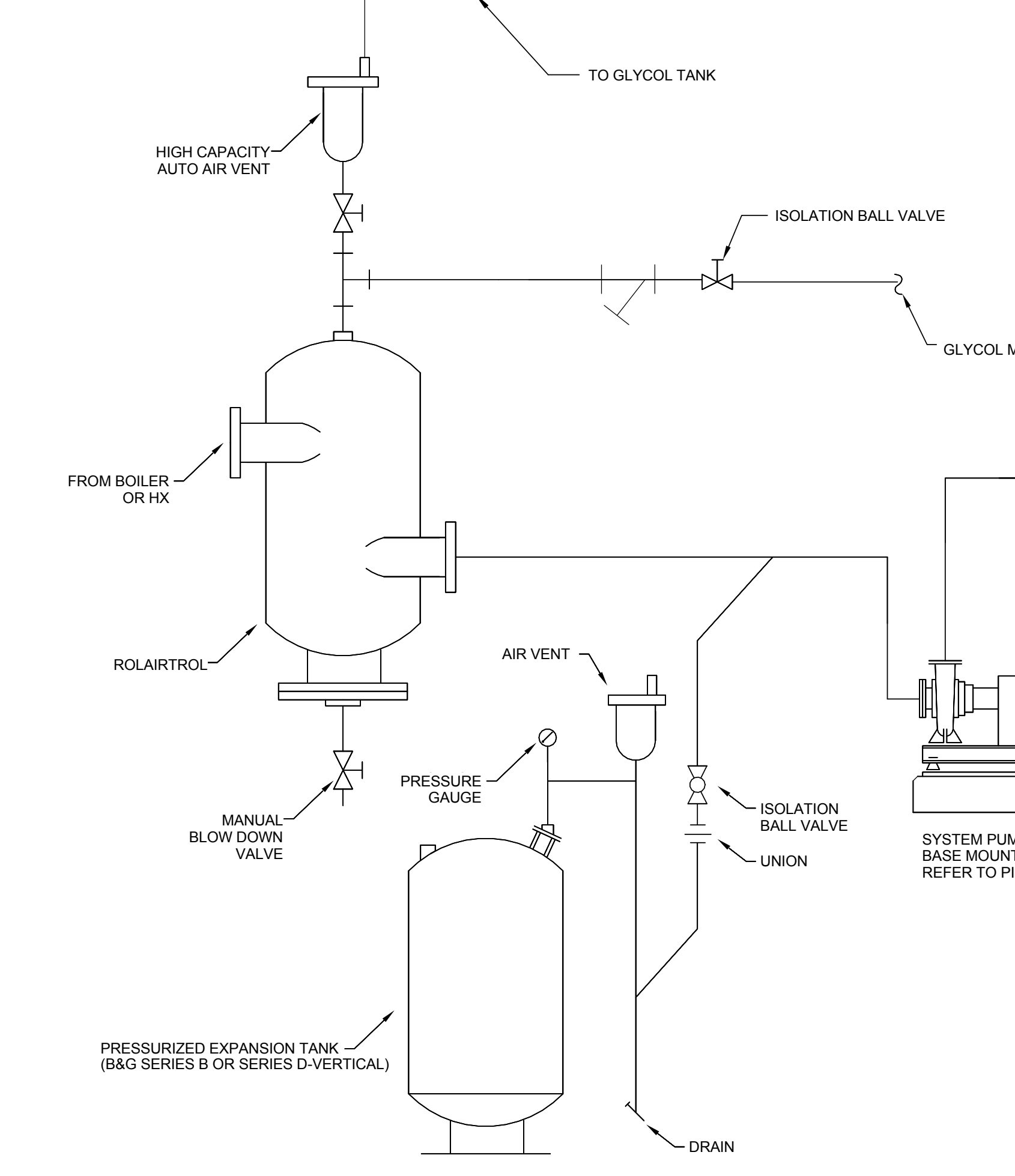


11 STEAM DRIP LEG DETAIL
N.T.S.

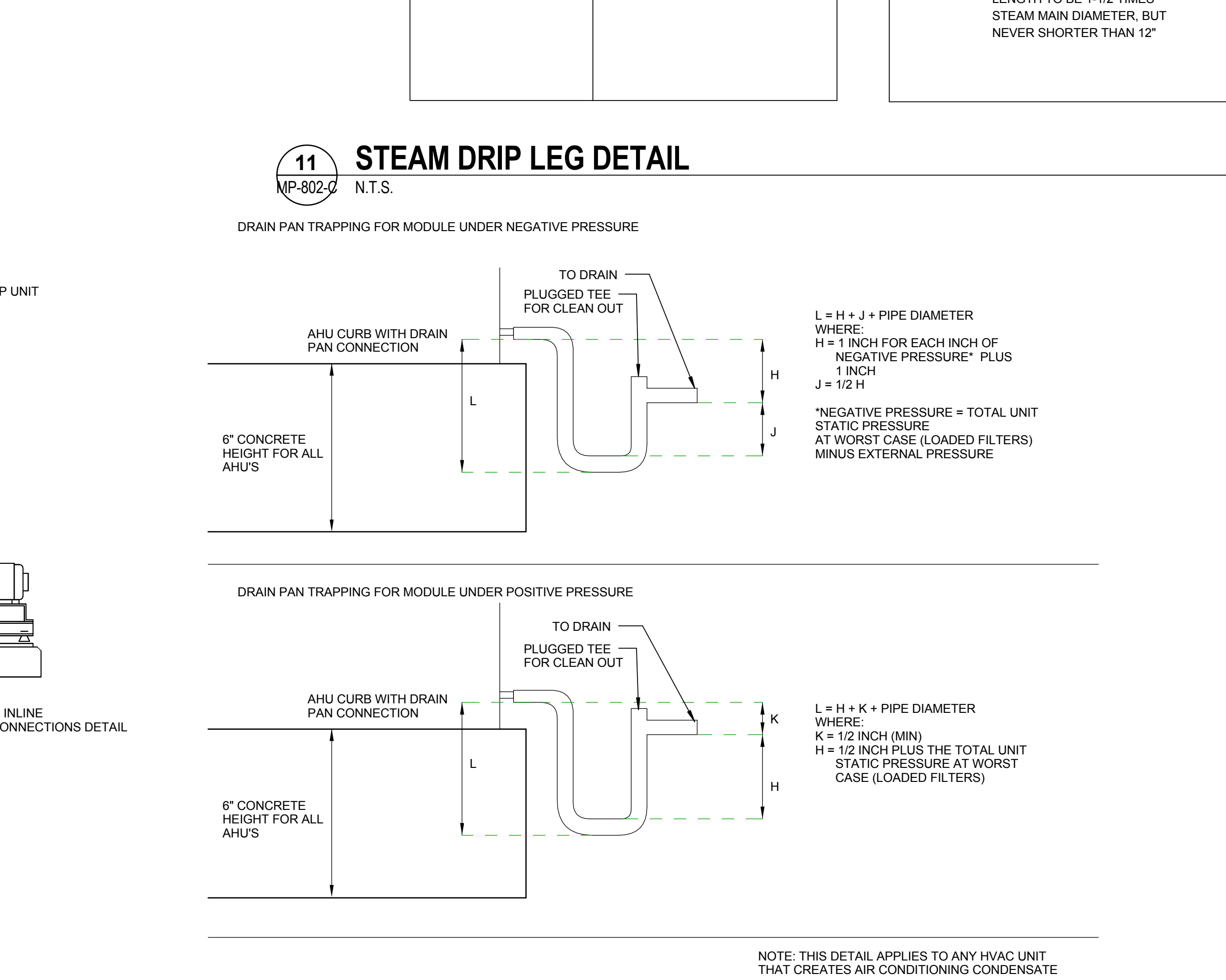
SIZE OF STEAM MAIN	COLLECTION LEG DIAMETER A	LENGTH C OF COLLECTION LEG
1/2" TO 4"	SAME AS MAIN	AUTOMATIC START UP LENGTH TO BE 28" OR MORE
6" AND LARGER	1/2 x STEAM MAIN DIAMETER, BUT NEVER SMALLER THAN 4"	SUPERVISED START UP LENGTH TO BE 1-1/2 TIMES STEAM MAIN DIAMETER, BUT NEVER SHORTER THAN 12"



12 HUMIDIFIER DETAIL
12" = 1'-0"

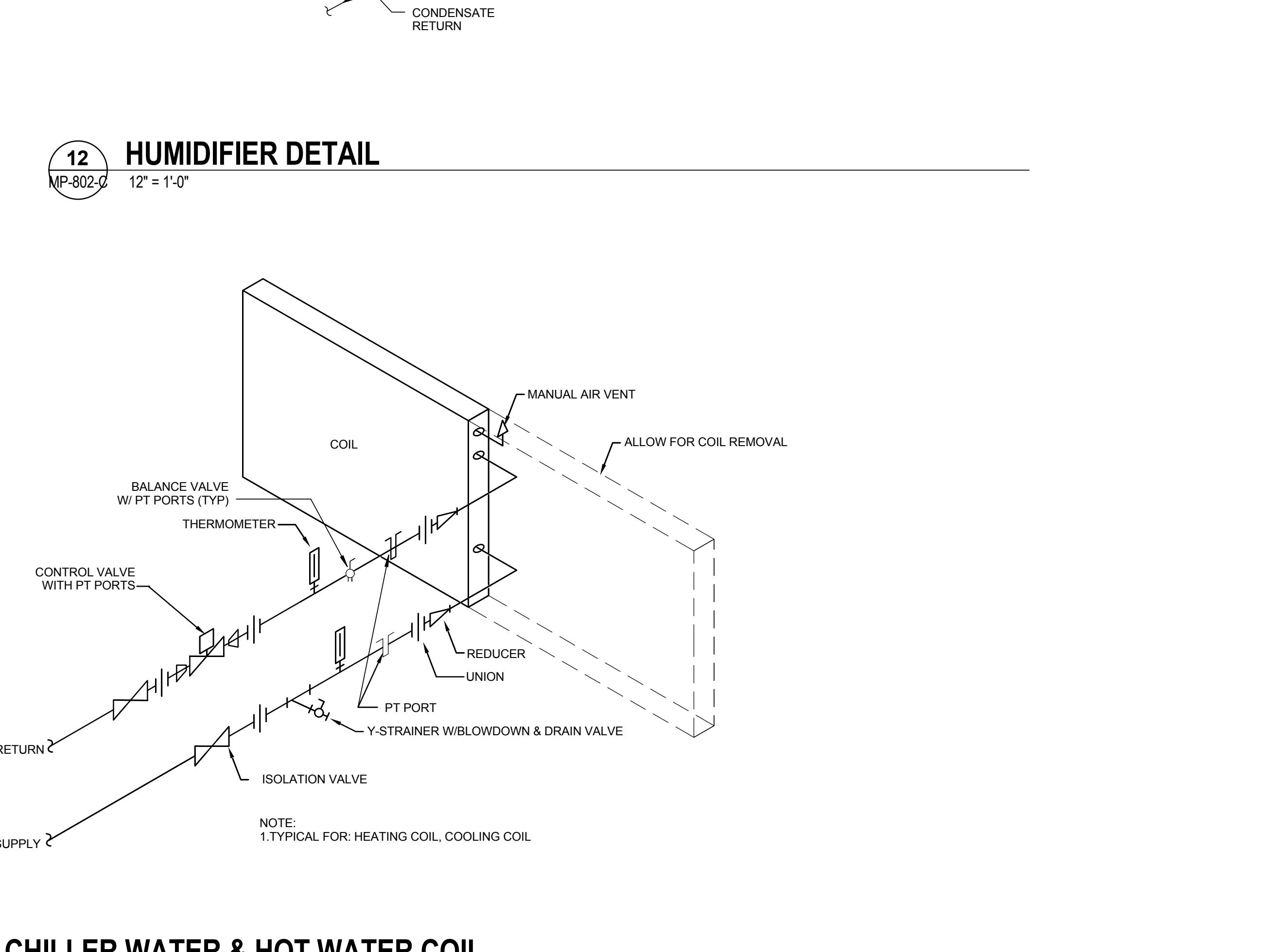


13 TYPICAL EXPANSION TANK/AIR SEPARATOR
N.T.S.



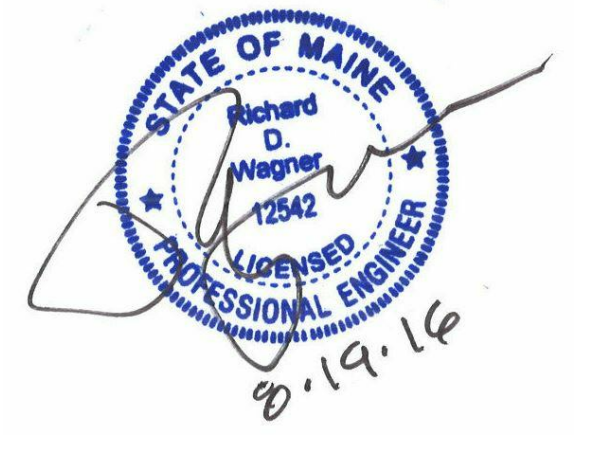
14 AHU UNIT DRAIN PAN PIPING
N.T.S.

NOTE: THIS DETAIL APPLIES TO ANY HVAC UNIT THAT CREATES AIR CONDITIONING CONDENSATE



15 CHILLER WATER & HOT WATER COIL PIPING DETAIL, SINGLE COIL
12" = 1'-0"

NOTE:
1. TYPICAL FOR HEATING COIL, COOLING COIL



Revision	By	App'd	DD.MM.YYYY
0	INTERIOR FIT-OUT ISSUED FOR CONSTRUCTION		08/19/2016
1	PACKAGE C - INTERIOR FIT-OUT		08/19/2016
2	PACKAGE B - SUPERSTRUCTURE & SHELL		08/05/2016
3	PACKAGE A - FOUNDATIONS & BELOW SLAB		07/22/2016
4	Issued		07/22/2016

Permit/Seal

Client/Project
IMMUCELL

Lot 11 - Second Tee Business Park
1039 Riverside Street
Portland, Maine 04103

Title
MECHANICAL PIPING DETAILS

Project No.	Scale
191504176	12" = 1'-0"
Revision	Drawing No.
0	MP-802-C