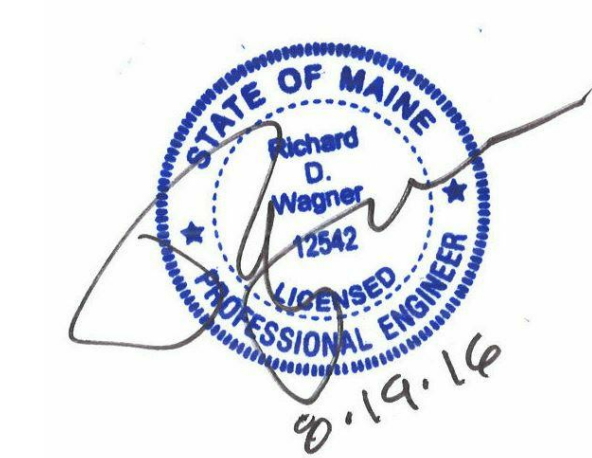


GENERAL NOTES

- BOD DIMENSIONS AND RATINGS ARE DIAGRAMMATIC IN NATURE. MECHANICAL CONTRACTOR IS RESPONSIBLE FOR FIELD VERIFICATION, ROUTING AND COORDINATION OF NEW DUCTWORK.
- ALL BOD DIMENSIONS ARE IN REFERENCE TO THE FIRST FLOOR FINISHED FLOOR.
- PROVIDE BALANCE DAMPERS AS INDICATED ON THE DRAWINGS AND AS REQUIRED FOR SYSTEM BALANCING.
- FLEXIBLE DUCT CONNECTIONS TO AIR TERMINAL SHALL BE NO LONGER THAN 5' IN LENGTH. BENDS OVER 90° ARE NOT PERMITTED.

KEYED NOTES

- PROVIDE A 24"x10" DUCT MOUNTED GRILLE. SEE SCHEDULE FOR ADDITIONAL DETAILS.
- PROVIDE A 12"x8" DUCT MOUNTED GRILLE. SEE SCHEDULE FOR ADDITIONAL DETAILS.
- PROVIDE A 18"x10" DUCT MOUNTED GRILLE. SEE SCHEDULE FOR ADDITIONAL DETAILS.
- PROVIDE A 6"x8" DOOR TRANSFER GRILLE.
- PROVIDE A 6"x8" DOOR TRANSFER GRILLE.
- PROVIDE A 6"x8" DOOR TRANSFER GRILLE.
- PROVIDE FIRE DAMPER AT LOCATION INDICATED. COORDINATE WITH ARCHITECTURAL DISCIPLINE FOR PENETRATION SEALING REQUIREMENTS.



Revision	By	App'd	DD.MM.YYYY
0	INTERIOR FIT OUT - ISSUED FOR CONSTRUCTION		08/19/2016
1	PACKAGE C - INTERIOR FIT-OUT		08/19/2016
2	PACKAGE B - SUPERSTRUCTURE & SHELL		08/05/2016
3	PACKAGE A - FOUNDATIONS & BELOW SLAB		07/22/2016
Issued			07/22/2016

Revision	By	App'd	DD.MM.YYYY
0	INTERIOR FIT OUT - ISSUED FOR CONSTRUCTION		08/19/2016

Revision	By	App'd	DD.MM.YYYY
0	INTERIOR FIT OUT - ISSUED FOR CONSTRUCTION		08/19/2016

Revision	By	App'd	DD.MM.YYYY
0	INTERIOR FIT OUT - ISSUED FOR CONSTRUCTION		08/19/2016

Client/Project
IMMUCELL

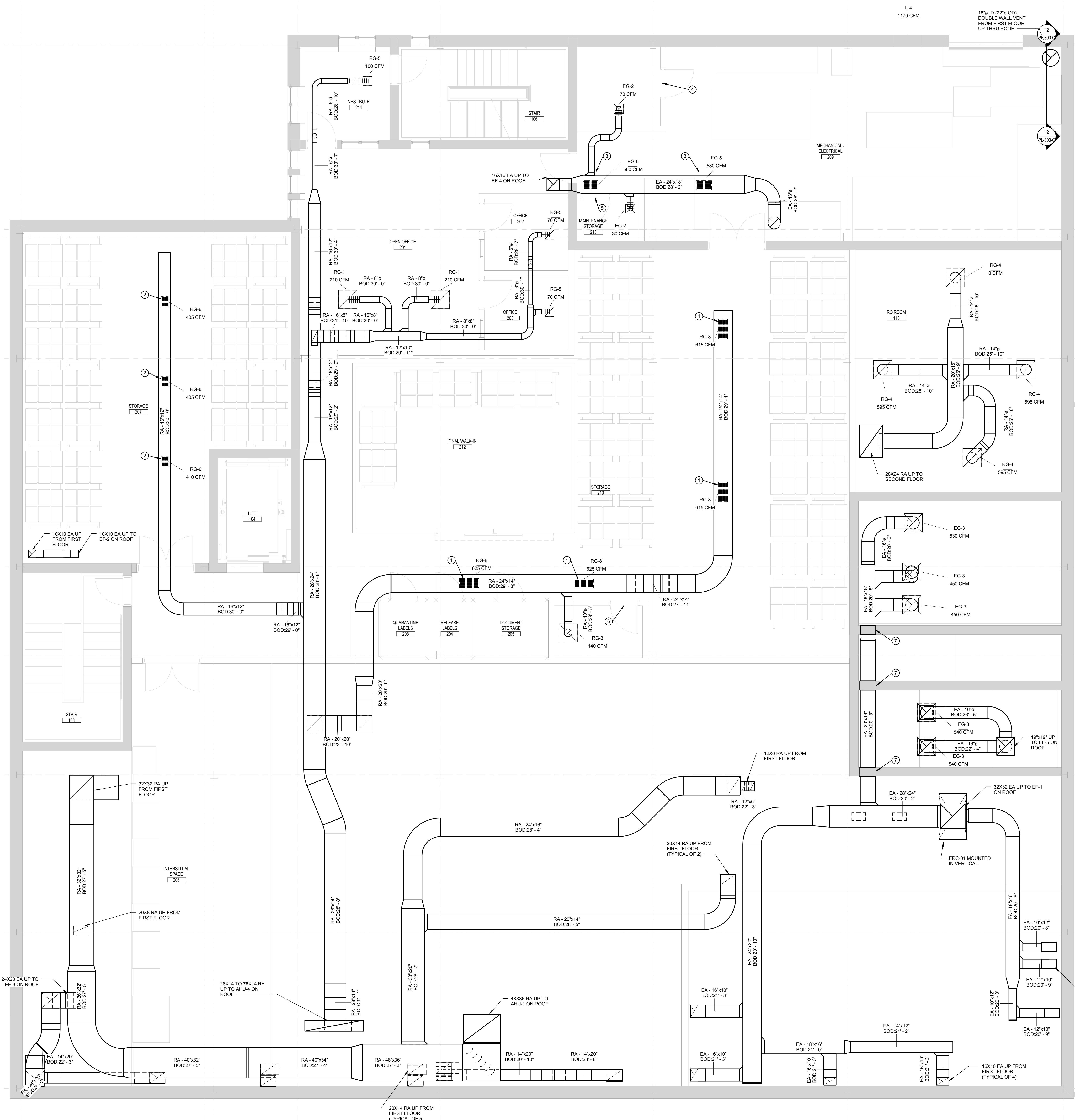
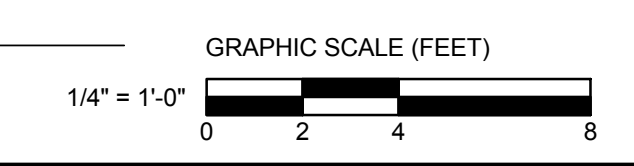
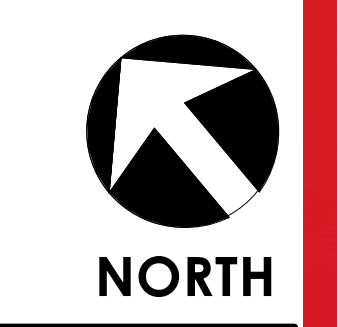
Lot 11 - Second Tee Business Park
1039 Riverside Street
Portland, Maine 04103

Title
SECOND FLOOR - RETURN DUCTWORK PLAN

Project No. 191504176
Scale 1/4" = 1'-0"

Revision 0
Drawing No.

MH-402-C



1 SECOND FLOOR - RETURN HVAC PLAN
1/4" = 1'-0"

ORIGINAL SHEET: A06 (3/14/16)