

GENERAL NOTES

- BOD DIMENSIONS AND RATINGS ARE DIAGRAMMATIC IN NATURE. MECHANICAL CONTRACTOR IS RESPONSIBLE FOR FIELD VERIFICATION, ROUTING AND COORDINATION OF NEW DUCTWORK.
- ALL BOD DIMENSIONS ARE IN REFERENCE THE FIRST FLOOR FINISHED FLOOR.
- PROVIDE BALANCE DAMPERS AS INDICATED ON THE DRAWINGS AND AS REQUIRED FOR SYSTEM BALANCING.
- FLEXIBLE DUCT CONNECTIONS TO AIR TERMINAL SHALL BE NO LONGER THAN 5' IN LENGTH. BENDS OVER 90° ARE NOT PERMITTED.
- FLEXIBLE DUCT CONNECTIONS TO HEPA FILTERS ARE NOT PERMITTED.

KEYED NOTES

- PROVIDE A 10"x10" SUPPLY GRILLE. SEE SCHEDULE FOR MODEL INFORMATION.
- PROVIDE FIRE DAMPER AT LOCATION INDICATED. COORDINATE WITH ARCHITECTURAL DISCIPLINE FOR PENETRATION SEALING REQUIREMENTS.

Revision	By	App'd	DD/MYY
0			08/19/2016
INTERIOR FIT-OUT ISSUED FOR CONSTRUCTION			
1			08/19/2016
PACKAGE C - INTERIOR FIT-OUT			
2			08/03/2016
PACKAGE B - SUPERSTRUCTURE & SHELL			
3			07/22/2016
PACKAGE A - FOUNDATIONS & BELOW SLAB			
4			07/22/2016
Issued			

Permit/Seal

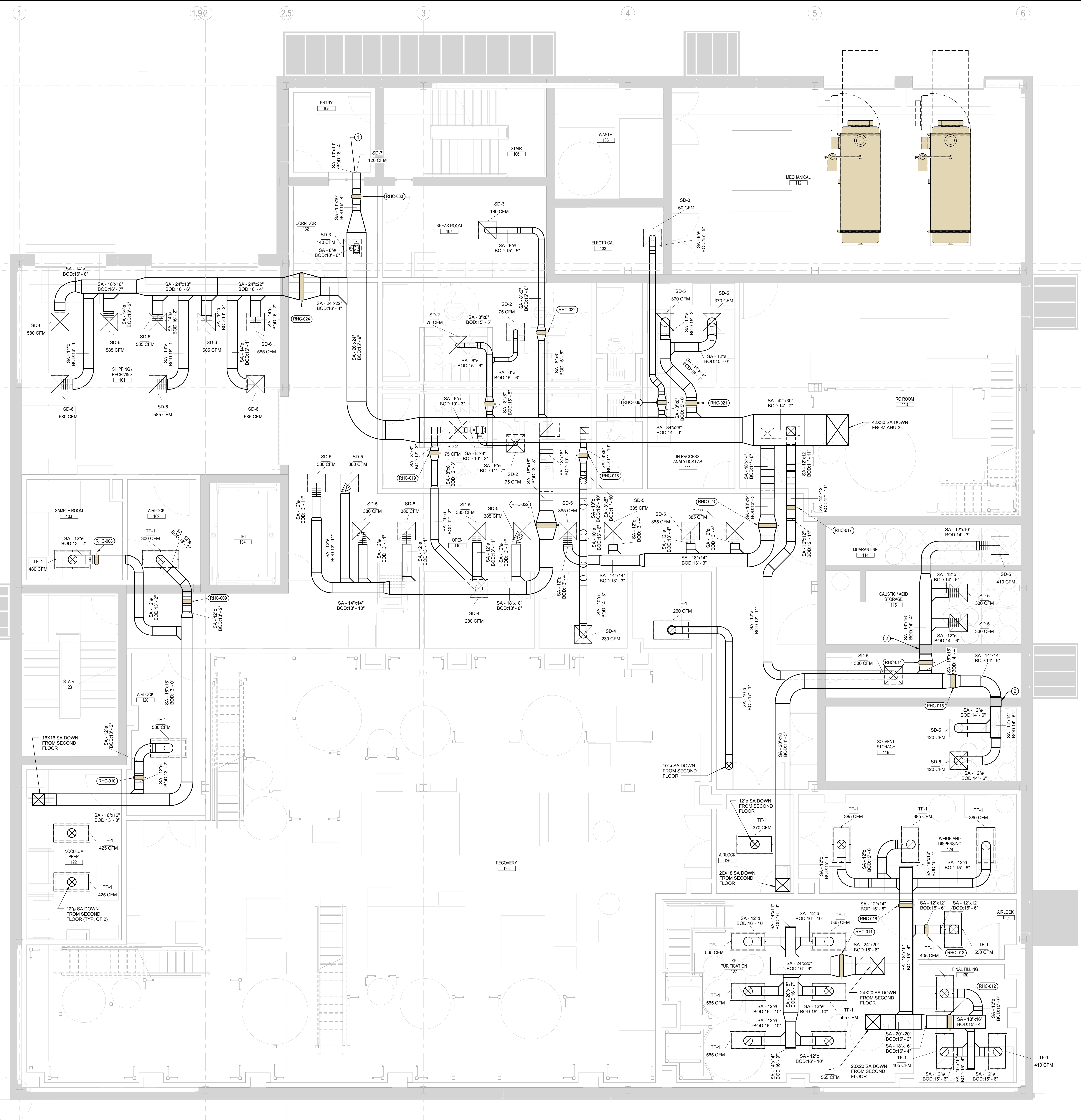
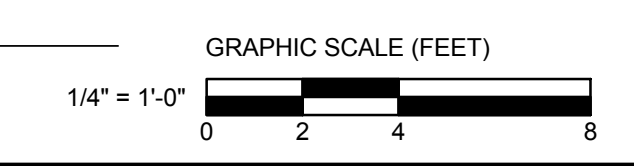
Client/Project
IMMUCELL

Lot 11 - Second Tee Business Park
1039 Riverside Street
Portland, Maine 04103

Title
FIRST FLOOR - SUPPLY DUCTWORK PLAN

Project No. 191504176
Scale 1/4" = 1'-0"
Revision 0
Drawing No.

MH-301-C



1 FIRST FLOOR - SUPPLY HVAC PLAN
1/4" = 1'-0"

ORIGINAL SHEET: A06 (3/14/16)