

- LEGEND**
- PERSONNEL FLOW
 - WASTE FLOW
 - MATERIAL FLOW
 - PRODUCT FLOW

| | | | | |
|--------------------------------------|--|-----|-------|-------------------|
| 0 | INTERIOR FIT-OUT - ISSUED FOR CONSTRUCTION | JLB | KJM | 08/19/2016 |
| A | ISSUED FOR CLIENT REVIEW | | RFK | 06/08/2016 |
| Revision | | By | App'd | MM/DD/YYYY |
| PACKAGE C - INTERIOR FIT-OUT | | | | 08/19/2016 |
| PACKAGE B - SUPERSTRUCTURE & SHELL | | | | 08/05/2016 |
| PACKAGE A - FOUNDATIONS & BELOW SLAB | | | | 07/22/2016 |
| Issued | | By | App'd | MM/DD/YYYY |

Permit-Seal

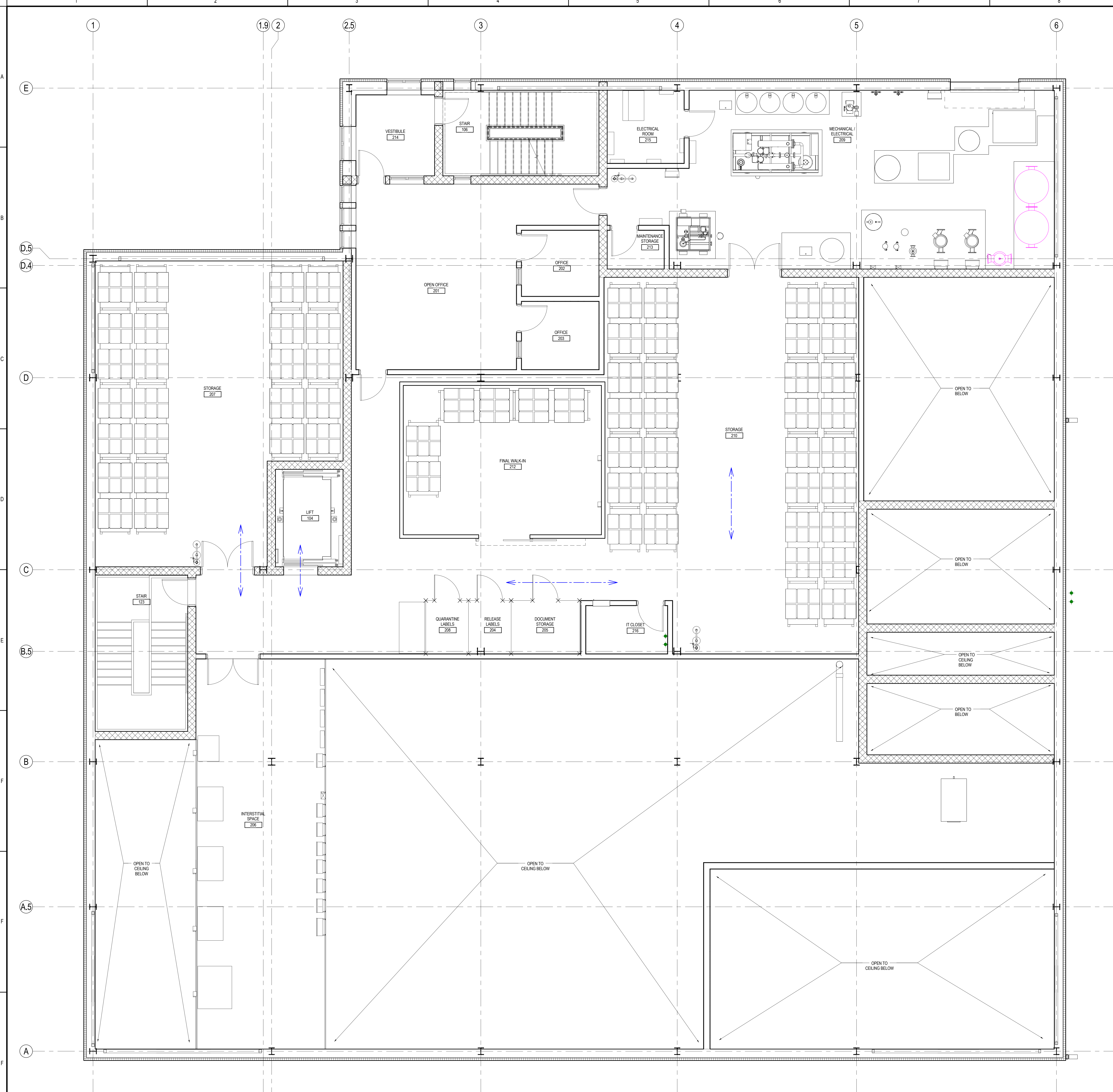
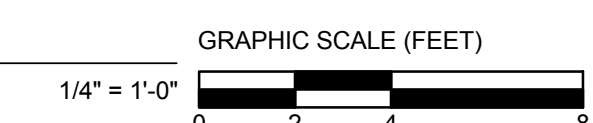
Client/Project
IMMUCELL

Lot 11 - Second Tee Business Park
 1039 Riverside Street
 Portland, Maine 04103

Title
SECOND FLOOR MATERIAL FLOW DIAGRAM

Project No. 191504176
 Scale 1/4" = 1'-0"
 Revision 0
 Drawing No.

G-112-C



1 SECOND FLOOR MATERIAL FLOW DIAGRAM
 G-112-C 1/4" = 1'-0"

ORIGINAL SHEET: A08 E (3/14/16)
 REVISIONS: A (1/16/2016) - INTERIOR FIT-OUT; B (2/16/2016) - SUPERSTRUCTURE & SHELL; C (8/19/2016) - INTERIOR FIT-OUT